

# Anti-Creatine kinase B type antibody [EPR3927] ab92452

KO 評価済 リコンビナント RabMAb

6 References 画像数 11

### 製品の概要

製品名	Anti-Creatine kinase B type antibody [EPR3927]
製品の詳細	Rabbit monoclonal [EPR3927] to Creatine kinase B type
由来種	Rabbit
特異性	The mouse and rat recommendation is based on the WB results. We do not guarantee IHC-P for mouse and rat.
アプリケーション	<b>適用あり:</b> WB, IHC-P, ICC/IF, Flow Cyt (Intra)
種交差性	<b>交差種:</b> Mouse, Rat, Human
免疫原	Synthetic peptide within Human Creatine kinase B type aa 350-450 (C terminal). The exact sequence is proprietary.
ポジティブ・コントロール	WB: HeLa, HAP1, SHSY-5Y, Y-79, SW840, mouse cerebellum, mouse brain, C6 and rat brain whole cell lysates IHC-P: Human astrocytoma and glioma Tissue ICC/IF: HeLa cells Flow Cyt (intra): HeLa cells
特記事項	This product is a recombinant monoclonal antibody, which offers several advantages including: <ul style="list-style-type: none"> <li>- High batch-to-batch consistency and reproducibility</li> <li>- Improved sensitivity and specificity</li> <li>- Long-term security of supply</li> <li>- Animal-free production</li> </ul> For more information <a href="#">see here</a> . Our RabMAb <sup>®</sup> technology is a patented hybridoma-based technology for making rabbit monoclonal antibodies. For details on our patents, please refer to <a href="#">RabMAb<sup>®</sup> patents</a> .

### 製品の特性

製品の状態	Liquid
保存方法	Shipped at 4°C. Store at +4°C short term (1-2 weeks). Upon delivery aliquot. Store at -20°C long term. Avoid freeze / thaw cycle.
バッファー	pH: 7.20 Preservative: 0.01% Sodium azide Constituents: 59% PBS, 40% Glycerol (glycerin, glycerine), 0.05% BSA
精製度	Protein A purified

ポリクローナル	モノクローナル
クローン名	EPR3927
アイソタイプ	IgG

## アプリケーション

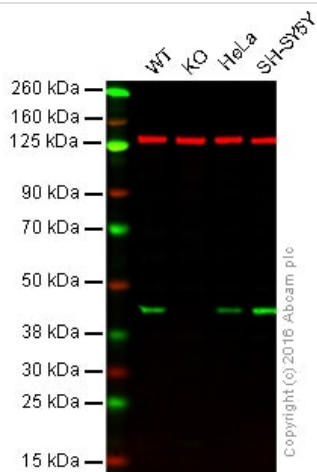
**The Abpromise guarantee**      **Abpromise保証は、次のテスト済みアプリケーションにおけるab92452の使用に適用されず**  
 アプリケーションノートには、推奨の開始希釈率がありますが、適切な希釈率につきましてはご検討ください。

アプリケーション	Abreviews	特記事項
WB		1/10000 - 1/50000. Predicted molecular weight: 43 kDa.
IHC-P		1/100 - 1/1000. See <b>IHC antigen retrieval protocols</b> . Use of an HRP/AP polymerized secondary antibody is recommended for enhanced staining. The mouse and rat recommendation is based on the WB results. We do not guarantee IHC-P for mouse and rat.
ICC/IF		1/50 - 1/500.
Flow Cyt (Intra)		1/10 - 1/100. <b>ab172730</b> - Rabbit monoclonal IgG, is suitable for use as an isotype control with this antibody.

## ターゲット情報

機能	Reversibly catalyzes the transfer of phosphate between ATP and various phosphagens (e.g. creatine phosphate). Creatine kinase isoenzymes play a central role in energy transduction in tissues with large, fluctuating energy demands, such as skeletal muscle, heart, brain and spermatozoa.
配列類似性	Belongs to the ATP:guanido phosphotransferase family. Contains 1 phosphagen kinase C-terminal domain. Contains 1 phosphagen kinase N-terminal domain.
細胞内局在	Cytoplasm.

## 画像



Western blot - Anti-Creatine kinase B type antibody [EPR3927] (ab92452)

**Lane 1:** Wild-type HAP1 cell lysate (20 µg)

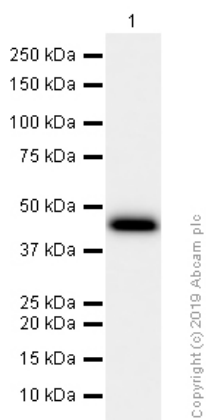
**Lane 2:** Creatine kinase B knockout HAP1 cell lysate (20 µg)

**Lane 3:** HeLa cell lysate (20 µg)

**Lane 4:** SH-SY5Y cell lysate (20 µg)

**Lanes 1 - 4:** Merged signal (red and green). Green - ab92452 observed at 45 kDa. Red - loading control, **ab18058**, observed at 2X kDa.

ab92452 (unpurified) was shown to specifically react with Creatine kinase B when ProteinX knockout samples were used. Wild-type and Creatine kinase B knockout samples were subjected to SDS-PAGE. ab92452 and **ab18058** (loading control to vinculin) were both diluted 1/10 000 and incubated overnight at 4°C. Blots were developed with Goat anti-Rabbit IgG H&L (IRDye® 800CW) preadsorbed (**ab216773**) and Goat anti-Mouse IgG H&L (IRDye® 680RD) preadsorbed (**ab216776**) secondary antibodies at 1/10000 dilution for 1 hour at room temperature before imaging.



Western blot - Anti-Creatine kinase B type antibody [EPR3927] (ab92452)

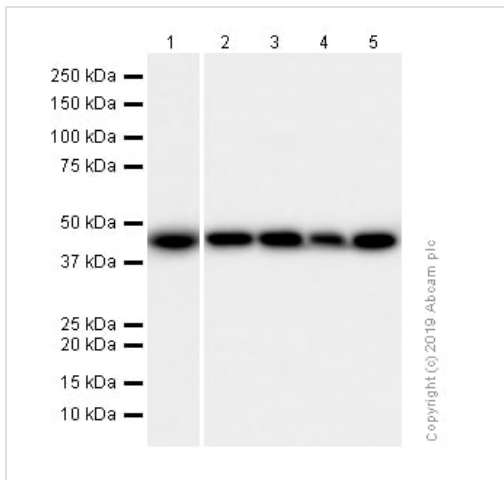
Anti-Creatine kinase B type antibody [EPR3927] (ab92452) at 1/10000 dilution (Purified) + Y79 (Human retinoblastoma retinoblastoma) whole cell lysates at 15 µg

### Secondary

Goat Anti-Rabbit IgG H&L (HRP) (**ab97051**) at 1/20000 dilution

**Predicted band size:** 43 kDa

**Observed band size:** 43 kDa



Western blot - Anti-Creatine kinase B type antibody [EPR3927] (ab92452)

**Lanes 1-4 :** Anti-Creatine kinase B type antibody [EPR3927]

(ab92452) at 1/10000 dilution (Purified)

**Lane 5 :** Anti-Creatine kinase B type antibody [EPR3927]

(ab92452) at 1/10000 dilution

**Lane 1 :** HeLa (Human cervix adenocarcinoma epithelial cell) whole cell lysates

**Lane 2 :** Mouse cerebellum lysates

**Lane 3 :** Mouse brain lysates

**Lane 4 :** C6 (Rat glial tumor glial cell) whole cell lysates

**Lane 5 :** Rat brain lysates

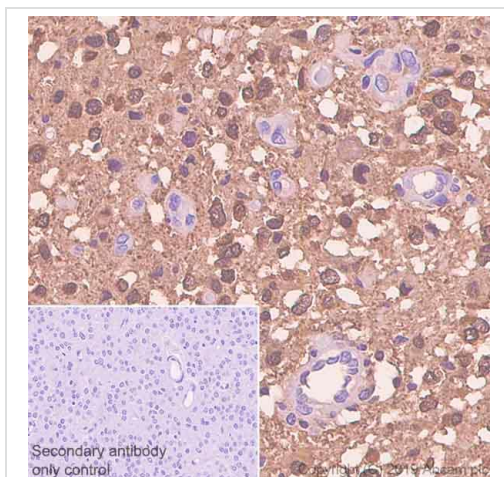
Lysates/proteins at 20 µg per lane.

### Secondary

**All lanes :** Goat Anti-Rabbit IgG H&L (HRP) ([ab97051](#)) at 1/20000 dilution

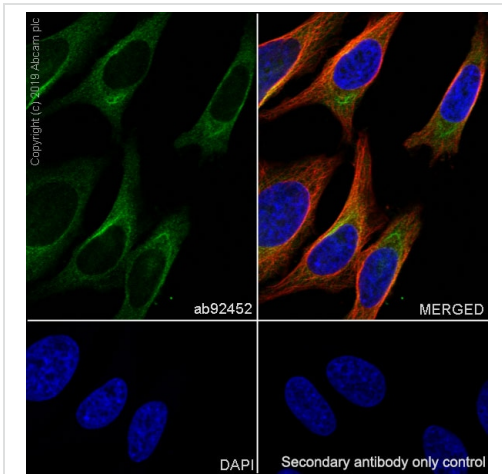
**Predicted band size:** 43 kDa

**Observed band size:** 43 kDa



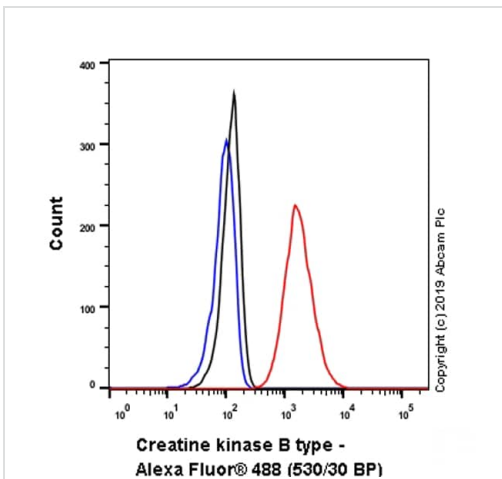
Immunohistochemistry (Formalin/PFA-fixed paraffin-embedded sections) - Anti-Creatine kinase B type antibody [EPR3927] (ab92452)

Immunohistochemistry (Formalin/PFA-fixed paraffin-embedded sections) analysis of human astrocytoma tissue sections labeling Creatine kinase B type with purified ab92452 at 1/1000 dilution (0.101 µg/ml). Heat mediated antigen retrieval was performed using Bond™ Epitope Retrieval Solution 2 (pH 9.0). Rabbit specific IHC polymer detection kit HRP/DAB ([ab209101](#)) was used as the secondary antibody. Negative control: PBS instead of the primary antibody. Hematoxylin was used as a counterstain.



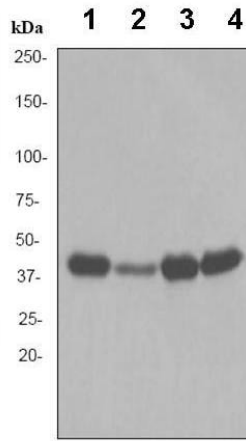
Immunocytochemistry/ Immunofluorescence - Anti-Creatine kinase B type antibody [EPR3927] (ab92452)

Immunocytochemistry/ Immunofluorescence analysis of HeLa (Human cervix adenocarcinoma epithelial cell) cells labeling Creatine kinase B type with purified ab92452 at 1:50 dilution (2.0 µg/ml). Cells were fixed in 4% Paraformaldehyde and permeabilized with 0.1% tritonX-100. Cells were counterstained with Ab195889 Anti-alpha Tubulin antibody [DM1A] - Microtubule Marker (Alexa Fluor® 594) 1:200 (2.5 µg/ml). Goat anti rabbit IgG (Alexa Fluor® 488, **ab150077**) was used as the secondary antibody at 1:1000 (2 µg/ml) dilution. DAPI (blue) was used as nuclear counterstain. PBS instead of the primary antibody was used as the secondary antibody only control.



Flow Cytometry (Intracellular) - Anti-Creatine kinase B type antibody [EPR3927] (ab92452)

Intracellular Flow Cytometry analysis of HeLa (Human cervix adenocarcinoma epithelial cell) cells labeling Creatine kinase B type with purified ab92452 at 1/20 dilution (5 µg/ml) (Red). Cells were fixed with 4% Paraformaldehyde and permeabilised with 90% Methanol. A Goat anti rabbit IgG (Alexa Fluor® 488, **ab150077**) secondary antibody was used at 1/2000. Isotype control - Rabbit monoclonal IgG (Black). Unlabeled control - Cell without incubation with primary antibody and secondary antibody (Blue).



Western blot - Anti-Creatine kinase B type antibody [EPR3927] (ab92452)

**All lanes :** Anti-Creatine kinase B type antibody [EPR3927] (ab92452) at 1/10000 dilution (unpurified)

**Lane 1 :** SHSY-5Y cell lysate

**Lane 2 :** HeLa cell lysate

**Lane 3 :** Y-79 cell lysate

**Lane 4 :** SW840 cell lysate

Lysates/proteins at 10 µg per lane.

**Secondary**

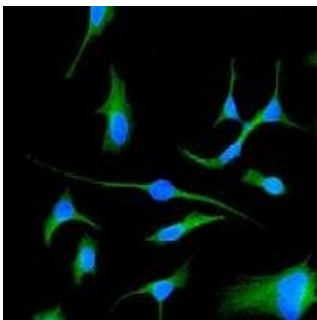
**All lanes :** HRP labelled goat anti-rabbit at 1/2000 dilution

**Predicted band size:** 43 kDa



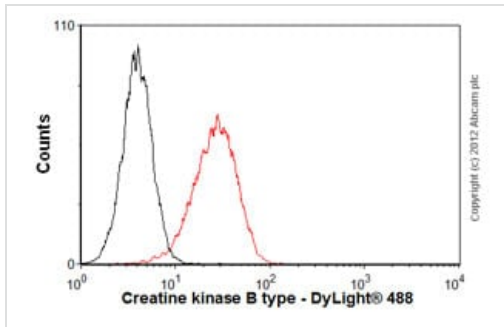
Immunohistochemistry (Formalin/PFA-fixed paraffin-embedded sections) - Anti-Creatine kinase B type antibody [EPR3927] (ab92452)

Paraffin embedded Human glioma tissue labelled with ab92452 (unpurified) at 1/100 dilution.



Immunocytochemistry/ Immunofluorescence - Anti-Creatine kinase B type antibody [EPR3927] (ab92452)





Immunofluorescence analysis of HeLa cells labelled with ab92452 (unpurified) at 1/100 dilution.



Flow Cytometry (Intracellular) - Anti-Creatine kinase B type antibody [EPR3927] (ab92452)

Overlay histogram showing HeLa cells stained with ab92452 (unpurified) (red line). The cells were fixed with 4% paraformaldehyde (10 min) and then permeabilized with 0.1% PBS-Tween for 20 min. The cells were then incubated in 1x PBS / 10% normal goat serum / 0.3M glycine to block non-specific protein-protein interactions followed by the antibody (ab92452, 1/100 dilution) for 30 min at 22°C. The secondary antibody used was DyLight® 488 goat anti-rabbit IgG (H+L) (ab96899) at 1/500 dilution for 30 min at 22°C. Isotype control antibody (black line) was rabbit IgG (monoclonal) (1µg/1x10<sup>6</sup> cells) used under the same conditions. Acquisition of >5,000 events was performed.

Why choose a recombinant antibody?

 <p><b>Research with confidence</b> Consistent and reproducible results</p>	 <p><b>Long-term and scalable supply</b> Recombinant technology</p>
 <p><b>Success from the first experiment</b> Confirmed specificity</p>	 <p><b>Ethical standards compliant</b> Animal-free production</p>

Anti-Creatine kinase B type antibody [EPR3927] (ab92452)

**Please note:** All products are "FOR RESEARCH USE ONLY. NOT FOR USE IN DIAGNOSTIC PROCEDURES"

### Our Abpromise to you: Quality guaranteed and expert technical support

- Replacement or refund for products not performing as stated on the datasheet
- Valid for 12 months from date of delivery
- Response to your inquiry within 24 hours
- We provide support in Chinese, English, French, German, Japanese and Spanish
- Extensive multi-media technical resources to help you
- We investigate all quality concerns to ensure our products perform to the highest standards

If the product does not perform as described on this datasheet, we will offer a refund or replacement. For full details of the Abpromise, please visit <https://www.abcam.co.jp/abpromise> or contact our technical team.

## **Terms and conditions**

---

- Guarantee only valid for products bought direct from Abcam or one of our authorized distributors