

Anti-Creatine kinase B type antibody [EPR3926] - BSA and Azide free ab239928

KO 評価済 リコンビナント RabMAb

画像数 6

製品の概要

製品名	Anti-Creatine kinase B type antibody [EPR3926] - BSA and Azide free
製品の詳細	Rabbit monoclonal [EPR3926] to Creatine kinase B type - BSA and Azide free
由来種	Rabbit
特異性	The mouse and rat recommendation is based on the WB results. We do not guarantee IHC-P for mouse and rat.
アプリケーション	適用あり: IHC-P, WB
種交差性	交差種: Mouse, Rat, Human
免疫原	Synthetic peptide. This information is proprietary to Abcam and/or its suppliers.
ポジティブ・コントロール	IHC-P: Human heart and cerebrum tissue.
特記事項	ab239928 is the carrier-free version of ab108388 .

Our **carrier-free** antibodies are typically supplied in a PBS-only formulation, purified and free of BSA, sodium azide and glycerol. The carrier-free buffer and high concentration allow for increased conjugation efficiency.

This conjugation-ready format is designed for use with fluorochromes, metal isotopes, oligonucleotides, and enzymes, which makes them ideal for antibody labelling, functional and cell-based assays, flow-based assays (e.g. mass cytometry) and Multiplex Imaging applications.

Use our **conjugation kits** for antibody conjugates that are ready-to-use in as little as 20 minutes with <1 minute hands-on-time and 100% antibody recovery: available for fluorescent dyes, HRP, biotin and gold.

This product is compatible with the Maxpar[®] Antibody Labeling Kit from Fluidigm, without the need for antibody preparation. Maxpar[®] is a trademark of Fluidigm Canada Inc.

This product is a recombinant monoclonal antibody, which offers several advantages including:

- High batch-to-batch consistency and reproducibility
- Improved sensitivity and specificity
- Long-term security of supply
- Animal-free production

For more information [see here](#).

Our RabMAb[®] technology is a patented hybridoma-based technology for making rabbit

monoclonal antibodies. For details on our patents, please refer to [RabMAb® patents](#).

製品の特性

製品の状態	Liquid
保存方法	Shipped at 4°C. Store at +4°C. Do Not Freeze.
バッファー	pH: 7.2 Constituent: PBS
キャリア・フリー	はい
精製度	Protein A purified
ポリ/モノ	モノクローナル
クローン名	EPR3926
アイソタイプ	IgG

アプリケーション

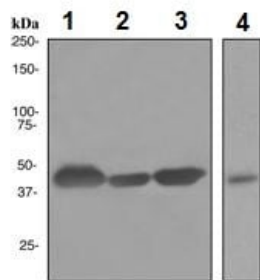
The Abpromise guarantee **Abpromise保証は、**次のテスト済みアプリケーションにおけるab239928の使用に適用されます
アプリケーションノートには、推奨の開始希釈率がありますが、適切な希釈率につきましてはご検討ください。

アプリケーション	Abreviews	特記事項
IHC-P		Use at an assay dependent concentration. Perform heat mediated antigen retrieval with citrate buffer pH 6 before commencing with IHC staining protocol. Antigen retrieval is recommended. The mouse and rat recommendation is based on the WB results. We do not guarantee IHC-P for mouse and rat.
WB		Use at an assay dependent concentration. Predicted molecular weight: 43 kDa.

ターゲット情報

機能	Reversibly catalyzes the transfer of phosphate between ATP and various phosphagens (e.g. creatine phosphate). Creatine kinase isoenzymes play a central role in energy transduction in tissues with large, fluctuating energy demands, such as skeletal muscle, heart, brain and spermatozoa.
配列類似性	Belongs to the ATP:guanido phosphotransferase family. Contains 1 phosphagen kinase C-terminal domain. Contains 1 phosphagen kinase N-terminal domain.
細胞内局在	Cytoplasm.

画像



Western blot - Anti-Creatine kinase B type antibody [EPR3926] - BSA and Azide free (ab239928)

All lanes : Anti-Creatine kinase B type antibody [EPR3926] ([ab108388](#)) at 1/50000 dilution

Lane 1 : 293T cell lysate

Lane 2 : SH SY5Y cell lysate

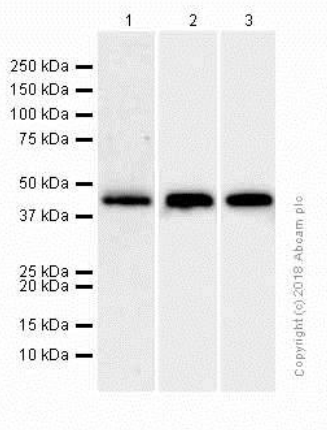
Lane 3 : Y79 cell lysate

Lane 4 : HeLa cell lysate

Lysates/proteins at 10 µg per lane.

Predicted band size: 43 kDa

This data was developed using [ab108388](#), the same antibody clone in a different buffer formulation.



Western blot - Anti-Creatine kinase B type antibody [EPR3926] - BSA and Azide free (ab239928)

All lanes : Anti-Creatine kinase B type antibody [EPR3926] ([ab108388](#)) at 1/50000 dilution

Lane 1 : HeLa (Human cervix adenocarcinoma epithelial cell) whole cell lysates

Lane 2 : Mouse brain lysates

Lane 3 : Rat brain lysates

Lysates/proteins at 20 µg per lane.

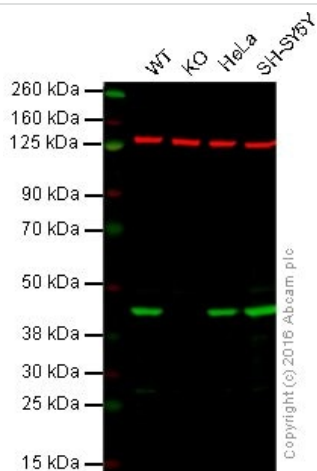
Secondary

All lanes : Goat Anti-Rabbit IgG H&L (HRP) ([ab97051](#)) at 1/20000 dilution

Predicted band size: 43 kDa

Observed band size: 43 kDa

This data was developed using [ab108388](#), the same antibody clone in a different buffer formulation.



Western blot - Anti-Creatine kinase B type antibody [EPR3926] - BSA and Azide free (ab239928)

This data was developed using [ab108388](#), the same antibody clone in a different buffer formulation.

Lane 1: Wild-type HAP1 cell lysate (20 µg)

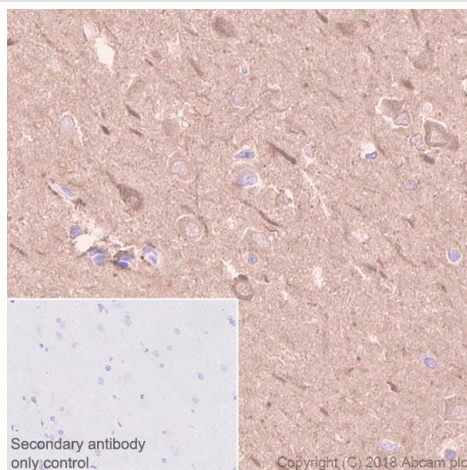
Lane 2: Creatine kinase B knockout HAP1 cell lysate (20 µg)

Lane 3: HeLa cell lysate (20 µg)

Lane 4: SH-SY5Y cell lysate (20 µg)

Lanes 1 - 4: Merged signal (red and green). Green - [ab108388](#) observed at 45 kDa. Red - loading control, [ab18058](#), observed at 124 kDa.

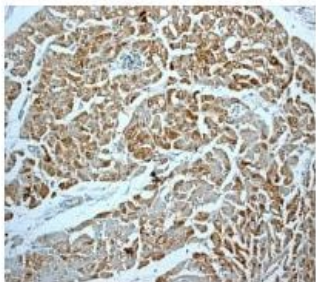
[ab108388](#) was shown to specifically react with Creatine kinase B when Creatine kinase B knockout samples were used. Wild-type and Creatine kinase B knockout samples were subjected to SDS-PAGE. [ab108388](#) and [ab18058](#) (loading control to vinculin) were diluted 1/50000 and 1/10000 respectively and incubated overnight at 4°C. Blots were developed with Goat anti-Rabbit IgG H&L (IRDye® 800CW) preadsorbed ([ab216773](#)) and Goat anti-Mouse IgG H&L (IRDye® 680RD) preadsorbed ([ab216776](#)) secondary antibodies at 1/10000 dilution for 1 hour at room temperature before imaging.



Immunohistochemistry (Formalin/PFA-fixed paraffin-embedded sections) - Anti-Creatine kinase B type antibody [EPR3926] - BSA and Azide free (ab239928)

Immunohistochemistry (Formalin/PFA-fixed paraffin-embedded sections) analysis of Human cerebrum tissue sections labeling Creatine kinase B type with purified [ab108388](#) at 1/500 dilution (1.14 µg/ml). Perform heat mediated antigen retrieval using Citrate buffer, pH 6.0. ImmunoHistoProbe one step HRP Polymer (ready to use) was used as the secondary antibody. Negative control: PBS instead of the primary antibody. Hematoxylin was used as a counterstain.

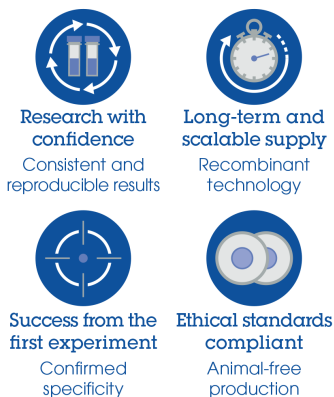
This data was developed using the same antibody clone in a different buffer formulation containing PBS, BSA, glycerol, and sodium azide ([ab108388](#)).



Immunohistochemistry (Formalin/PFA-fixed paraffin-embedded sections) - Anti-Creatine kinase B type antibody [EPR3926] - BSA and Azide free (ab239928)

ab108388, at 1/100 dilution, staining Creatine Kinase BB in Human heart by Immunohistochemistry, Paraffin-embedded tissue. This data was developed using the same antibody clone in a different buffer formulation containing PBS, BSA, glycerol, and sodium azide (**ab108388**).

Why choose a recombinant antibody?



Anti-Creatine kinase B type antibody [EPR3926] - BSA and Azide free (ab239928)

Please note: All products are "FOR RESEARCH USE ONLY. NOT FOR USE IN DIAGNOSTIC PROCEDURES"

Our Abpromise to you: Quality guaranteed and expert technical support

- Replacement or refund for products not performing as stated on the datasheet
- Valid for 12 months from date of delivery
- Response to your inquiry within 24 hours
- We provide support in Chinese, English, French, German, Japanese and Spanish
- Extensive multi-media technical resources to help you
- We investigate all quality concerns to ensure our products perform to the highest standards

If the product does not perform as described on this datasheet, we will offer a refund or replacement. For full details of the Abpromise, please visit <https://www.abcam.co.jp/abpromise> or contact our technical team.

Terms and conditions

- Guarantee only valid for products bought direct from Abcam or one of our authorized distributors