

# Anti-CPS1 antibody [EPR7494] - BSA and Azide free ab248236

リコンビナント **RabMAb**

画像数 4

### 製品の概要

製品名	Anti-CPS1 antibody [EPR7494] - BSA and Azide free
製品の詳細	Rabbit monoclonal [EPR7494] to CPS1 - BSA and Azide free
由来種	Rabbit
アプリケーション	<b>適用あり:</b> IHC-P, Flow Cyt (Intra), WB
種交差性	<b>交差種:</b> Human
免疫原	Synthetic peptide. This information is proprietary to Abcam and/or its suppliers.
特記事項	<p>ab248236 is the carrier-free version of <a href="#">ab128942</a>.</p> <p>Our <b>carrier-free</b> antibodies are typically supplied in a PBS-only formulation, purified and free of BSA, sodium azide and glycerol. The carrier-free buffer and high concentration allow for increased conjugation efficiency.</p> <p>This conjugation-ready format is designed for use with fluorochromes, metal isotopes, oligonucleotides, and enzymes, which makes them ideal for antibody labelling, functional and cell-based assays, flow-based assays (e.g. mass cytometry) and Multiplex Imaging applications.</p> <p>Use our <b>conjugation kits</b> for antibody conjugates that are ready-to-use in as little as 20 minutes with &lt;1 minute hands-on-time and 100% antibody recovery: available for fluorescent dyes, HRP, biotin and gold.</p> <p>This product is compatible with the Maxpar<sup>®</sup> Antibody Labeling Kit from Fluidigm, without the need for antibody preparation. Maxpar<sup>®</sup> is a trademark of Fluidigm Canada Inc.</p> <p>This product is a recombinant monoclonal antibody, which offers several advantages including:</p> <ul style="list-style-type: none"> <li>- High batch-to-batch consistency and reproducibility</li> <li>- Improved sensitivity and specificity</li> <li>- Long-term security of supply</li> <li>- Animal-free production</li> </ul> <p>For more information <a href="#">see here</a>.</p> <p>Our RabMAb<sup>®</sup> technology is a patented hybridoma-based technology for making rabbit monoclonal antibodies. For details on our patents, please refer to <a href="#">RabMAb<sup>®</sup> patents</a>.</p> <p>Mouse, Rat: We have preliminary internal testing data to indicate this antibody may not react with these species. Please contact us for more information.</p>

## 製品の特 性

製品の状態	Liquid
保存方法	Shipped at 4°C. Store at +4°C. Do Not Freeze.
バッファー	pH: 7.2 Constituent: PBS
キャリア・フリー	はい
精製度	Protein A purified
ポリ/モノ	モノクローナル
クローン名	EPR7494
アイソタイプ	IgG

## アプリケーション

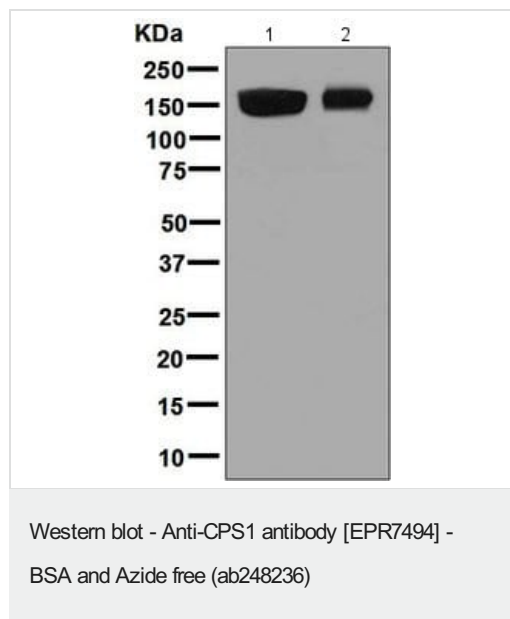
**The Abpromise guarantee**      **Abpromise保証は、次のテスト済みアプリケーションにおけるab248236の使用に適用されます**  
アプリケーションノートには、推奨の開始希釈率がありますが、適切な希釈率につきましてはご検討ください。

アプリケーション	Abreviews	特記事項
IHC-P		Use at an assay dependent concentration. Perform heat mediated antigen retrieval with citrate buffer pH 6 before commencing with IHC staining protocol.
Flow Cyt (Intra)		Use at an assay dependent concentration.
WB		Use at an assay dependent concentration. Detects a band of approximately 150 kDa (predicted molecular weight: 165 kDa).

## ターゲット情報

機能	Involved in the urea cycle of ureotelic animals where the enzyme plays an important role in removing excess ammonia from the cell.
組織特異性	Primarily in the liver and small intestine.
関連疾患	Defects in CPS1 are the cause of carbamoyl phosphate synthetase 1 deficiency (CPS1D) [MIM:237300]. CPS1D is an autosomal recessive disorder of the urea cycle causing hyperammonemia. Clinical features include protein intolerance, intermittent ataxia, seizures, lethargy, developmental delay and mental retardation. Note=Genetic variations in CPS1 influence the availability of precursors for nitric oxide (NO) synthesis and play a role in clinical situations where endogenous NO production is critically important, such as neonatal pulmonary hypertension, increased pulmonary artery pressure following surgical repair of congenital heart defects or hepatovenocclusive disease following bone marrow transplantation. Infants with neonatal pulmonary hypertension homozygous for Thr-1406 have lower L-arginine concentrations than neonates homozygous for Asn-1406.
配列類似性	Contains 2 ATP-grasp domains. Contains 1 glutamine amidotransferase type-1 domain.
ドメイン	The type-1 glutamine amidotransferase domain is defective.

## 画像



**All lanes :** Anti-CPS1 antibody [EPR7494] ([ab128942](#)) at 1/1000 dilution

**Lane 1 :** HeLa cell lysate

**Lane 2 :** Human fetal liver tissue lysate

Lysates/proteins at 10 µg per lane.

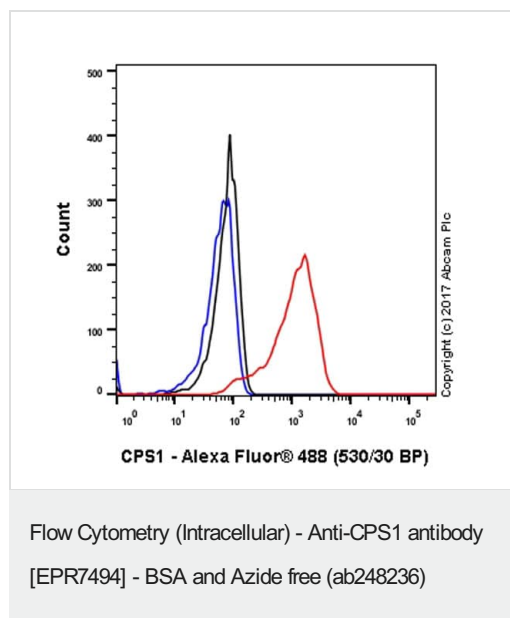
**Secondary**

**All lanes :** HRP labelled goat anti-rabbit at 1/2000 dilution

**Predicted band size:** 165 kDa

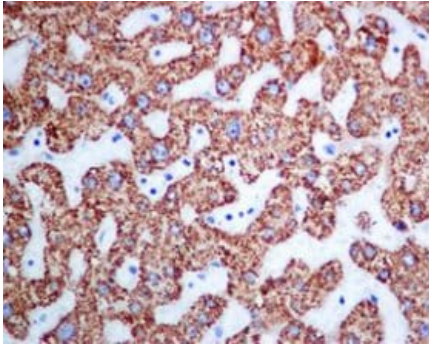
**Observed band size:** 150 kDa

This data was developed using [ab128942](#), the same antibody clone in a different buffer formulation.



This data was developed using [ab128942](#), the same antibody clone in a different buffer formulation.

Intracellular Flow Cytometry analysis of HeLa (human cervix adenocarcinoma) cells labeling CPS1 with unpurified [ab128942](#) at 1/200 dilution (10ug/ml) (red). Cells were fixed with 4% paraformaldehyde and permeabilised with 90% methanol. A Goat anti-rabbit IgG (Alexa Fluor® 488) (1/2000 dilution) was used as the secondary antibody. Rabbit monoclonal IgG (Black) was used as the isotype control, cells without incubation with primary antibody and secondary antibody (Blue) were used as the unlabeled control.



Immunohistochemistry (Formalin/PFA-fixed paraffin-embedded sections) - Anti-CPS1 antibody [EPR7494] - BSA and Azide free (ab248236)

This data was developed using [ab128942](#), the same antibody clone in a different buffer formulation. [ab128942](#), at 1/250 dilution, staining CPS1 in paraffin-embedded Human liver tissue by Immunohistochemistry. Perform heat mediated antigen retrieval with citrate buffer pH 6 before commencing with IHC staining protocol.

#### Why choose a recombinant antibody?



Anti-CPS1 antibody [EPR7494] - BSA and Azide free (ab248236)

**Please note:** All products are "FOR RESEARCH USE ONLY. NOT FOR USE IN DIAGNOSTIC PROCEDURES"

#### Our Abpromise to you: Quality guaranteed and expert technical support

- Replacement or refund for products not performing as stated on the datasheet
- Valid for 12 months from date of delivery
- Response to your inquiry within 24 hours
- We provide support in Chinese, English, French, German, Japanese and Spanish
- Extensive multi-media technical resources to help you

- We investigate all quality concerns to ensure our products perform to the highest standards

If the product does not perform as described on this datasheet, we will offer a refund or replacement. For full details of the Abpromise, please visit <https://www.abcam.co.jp/abpromise> or contact our technical team.

### **Terms and conditions**

---

- Guarantee only valid for products bought direct from Abcam or one of our authorized distributors