

Anti-CPI-17 (phospho T38) antibody ab52174

★★★★☆ [2 Abreviews](#) [5 References](#) [画像数 2](#)

製品の概要

製品名	Anti-CPI-17 (phospho T38) antibody
製品の詳細	Rabbit polyclonal to CPI-17 (phospho T38)
由来種	Rabbit
特異性	ab52174 detects endogenous levels of CPI17a only when phosphorylated at threonine 38.
アプリケーション	適用あり: IHC-P, WB
種交差性	交差種: Mouse, Human
免疫原	Synthetic peptide corresponding to Human CPI-17 aa 1-100 (phospho T38). Database link: Q96A00
特記事項	<p>The Life Science industry has been in the grips of a reproducibility crisis for a number of years. Abcam is leading the way in addressing this with our range of recombinant monoclonal antibodies and knockout edited cell lines for gold-standard validation. Please check that this product meets your needs before purchasing.</p> <p>If you have any questions, special requirements or concerns, please send us an inquiry and/or contact our Support team ahead of purchase. Recommended alternatives for this product can be found below, along with publications, customer reviews and Q&As</p>

製品の特性

製品の状態	Liquid
保存方法	Shipped at 4°C. Store at -20°C. Stable for 12 months at -20°C.
バッファー	pH: 7.40 Preservative: 0.02% Sodium azide Constituents: 50% Glycerol, 0.87% Sodium chloride, PBS
精製度	Without Mg+2 and Ca+2 Immunogen affinity purified
特記事項(精製)	ab52174 was affinity-purified from rabbit antiserum by affinity-chromatography using epitope-specific phosphopeptide. The antibody against non-phosphopeptide was removed by chromatography using non-phosphopeptide corresponding to the phosphorylation site.
ポリクローナル	ポリクローナル
アイソタイプ	IgG

アプリケーション

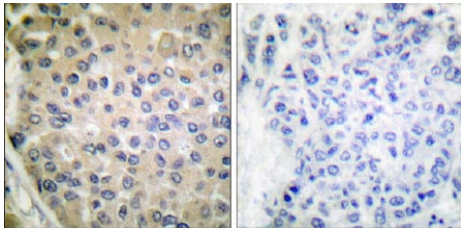
The Abpromise guarantee Abpromise保証は、次のテスト済みアプリケーションにおけるab52174の使用に適用されず
アプリケーションノートには、推奨の開始希釈率がありますが、適切な希釈率につきましてはご検討ください。

アプリケーション	Abreviews	特記事項
IHC-P		Use at an assay dependent concentration.
WB	★★★★☆ (2)	1/1000. Detects a band of approximately 17 kDa (predicted molecular weight: 17 kDa).

ターゲット情報

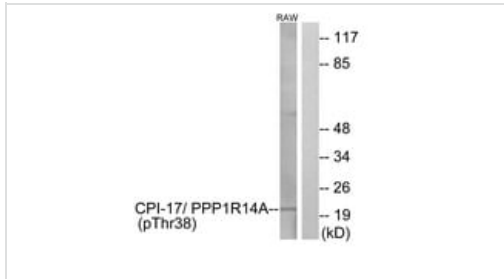
機能	Inhibitor of PPP1CA. Has over 1000-fold higher inhibitory activity when phosphorylated, creating a molecular switch for regulating the phosphorylation status of PPP1CA substrates and smooth muscle contraction.
組織特異性	Isoform 1 is detected in aorta and testis. Isoform 2 is detected in aorta.
配列類似性	Belongs to the PP1 inhibitor family.
細胞内局在	Cytoplasm.

画像



ab52174 at 1/50 dilution staining CPI-17 in human breast carcinoma by Immunohistochemistry, paraffin embedded tissue, in the presence (right image) and absence (left image) of the immunising peptide.

Immunohistochemistry (Formalin/PFA-fixed paraffin-embedded sections) - Anti-CPI-17 (phospho T38) antibody (ab52174)



Western blot - Anti-CPI-17 (phospho T38) antibody (ab52174)

Western blot analysis of extracts from RAW264.7 cells, using CPI-17 (Phospho-Thr38) (ab52174)Antibody. The lane on the right is treated with the synthesized peptide.

Please note: All products are "FOR RESEARCH USE ONLY. NOT FOR USE IN DIAGNOSTIC PROCEDURES"

Our Abpromise to you: Quality guaranteed and expert technical support

- Replacement or refund for products not performing as stated on the datasheet
- Valid for 12 months from date of delivery
- Response to your inquiry within 24 hours
- We provide support in Chinese, English, French, German, Japanese and Spanish
- Extensive multi-media technical resources to help you
- We investigate all quality concerns to ensure our products perform to the highest standards

If the product does not perform as described on this datasheet, we will offer a refund or replacement. For full details of the Abpromise, please visit <https://www.abcam.co.jp/abpromise> or contact our technical team.

Terms and conditions

- Guarantee only valid for products bought direct from Abcam or one of our authorized distributors