

### Anti-CPEB1 antibody ab127739

★★★★★ 1 Abreviews 1 References 両俵数?

**医薬用外劇物**

#### 製品の概要

製品名	Anti-CPEB1 antibody
製品の詳細	Rabbit polyclonal to CPEB1
由来種	Rabbit
アプリケーション	<b>適用あり:</b> WB, IHC-P
種交差性	<b>交差種:</b> Human
免疫原	Recombinant fragment, corresponding to a region within amino acids 239-417 of Human CPEB1 (UniProt Q9BZB8).
ポジティブ・コントロール	NT2D1, IMR32, U-87 MG and MCF7 whole cell lysates; Human colon carcinoma tissue.
特記事項	<p>The Life Science industry has been in the grips of a reproducibility crisis for a number of years. Abcam is leading the way in addressing this with our range of recombinant monoclonal antibodies and knockout edited cell lines for gold-standard validation. Please check that this product meets your needs before purchasing.</p> <p>If you have any questions, special requirements or concerns, please send us an inquiry and/or contact our Support team ahead of purchase. Recommended alternatives for this product can be found below, along with publications, customer reviews and Q&amp;As</p>

#### 製品の特性

製品の状態	Liquid
保存方法	Shipped at 4°C. Upon delivery aliquot. Store at -20°C or -80°C. Avoid freeze / thaw cycle.
バッファー	pH: 7.00 Preservative: 0.01% Thimerosal (merthiolate) Constituents: 78.99% PBS, 1% BSA, 20% Glycerol (glycerin, glycerine)
精製度	Immunogen affinity purified
ポリ/モノ	ポリクローナル
アイソタイプ	IgG

#### アプリケーション

## The Abpromise guarantee

**Abpromise保証は、**次のテスト済みアプリケーションにおけるab127739の使用に適用されます

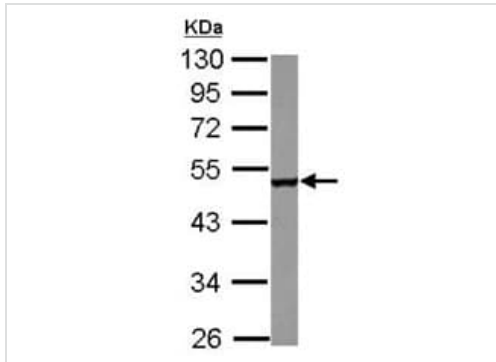
アプリケーションノートには、推奨の開始希釈率がありますが、適切な希釈率につきましてはご検討ください。

アプリケーション	Abreviews	特記事項
WB	★★★★★ (1)	1/500 - 1/3000. Predicted molecular weight: 54, 63 kDa.
IHC-P		1/100 - 1/500. Perform heat mediated antigen retrieval with citrate buffer pH 6 before commencing with IHC staining protocol.

## ターゲット情報

機能	Sequence-specific RNA-binding protein that regulates mRNA cytoplasmic polyadenylation and translation initiation during oocyte maturation, early development and at postsynapse sites of neurons. Binds to the cytoplasmic polyadenylation element (CPE), an uridine-rich sequence element (consensus sequence 5'-UUUUUAU-3') within the mRNA 3'-UTR. In absence of phosphorylation and in association with TACC3 is also involved as a repressor of translation of CPE-containing mRNA; a repression that is relieved by phosphorylation or degradation (By similarity). Involved in the transport of CPE-containing mRNA to dendrites; those mRNAs may be transported to dendrites in a translationally dormant form and translationally activated at synapses (By similarity). Its interaction with APLP1 promotes local CPE-containing mRNA polyadenylation and translation activation (By similarity). Induces the assembly of stress granules in the absence of stress.
組織特異性	Isoform 1 is expressed in immature oocytes, ovary, brain and heart. Isoform 2 is expressed in brain and heart. Isoform 3 and isoform 4 are expressed in brain. Expressed in breast tumors and several tumor cell lines.
配列類似性	Belongs to the RRM CPEB family. Contains 2 RRM (RNA recognition motif) domains.
ドメイン	The 2 RRM domains and the C-terminal region mediate interaction with CPE-containing RNA.
翻訳後修飾	Phosphorylated on serine/threonine residues by AURKA/STK6 within positions 166 and 197. Phosphorylation and dephosphorylation on Thr-172 regulates cytoplasmic polyadenylation and translation of CPE-containing mRNAs. Phosphorylation on Thr-172 by AURKA/STK6 and CAMK2A activates CPEB1. Phosphorylation on Thr-172 may be promoted by APLP1. Phosphorylation increases binding to RNA.
細胞内局在	Cytoplasm > P-body. Cytoplasmic granule. Cell junction > synapse. Membrane. Cell junction > synapse > postsynaptic cell membrane > postsynaptic density. Cell projection > dendrite. Also found in stress granules. Recruited to stress granules (SGs) upon arsenite treatment. In dendrites (By similarity). Localizes in synaptosomes at dendritic synapses of neurons (By similarity). Strongly enriched in postsynaptic density (PSD) fractions (By similarity). Transported into dendrites in a microtubule-dependent fashion and colocalizes in mRNA-containing particles with TACC3, dynein and kinesin (By similarity). Membrane-associated (By similarity). Colocalizes at excitatory synapses with members of the polyadenylation and translation complex factors (CPSF, APLP1, TACC3, AURKA/STK6, SYP, etc.) including CPE-containing RNAs.

## 画像

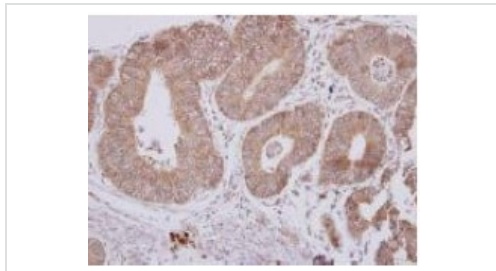


Western blot - Anti-CPEB1 antibody (ab127739)

Anti-CPEB1 antibody (ab127739) at 1/1000 dilution + U-87 MG whole cell lysate at 30 µg

**Predicted band size:** 54, 63 kDa

10% SDS PAGE



Immunohistochemistry (Formalin/PFA-fixed paraffin-embedded sections) - Anti-CPEB1 antibody (ab127739)

ab127739, at a dilution of 1/250, staining CPEB1 in paraffin-embedded Human colon carcinoma tissue by Immunohistochemistry.

**Please note:** All products are "FOR RESEARCH USE ONLY. NOT FOR USE IN DIAGNOSTIC PROCEDURES"

### Our Abpromise to you: Quality guaranteed and expert technical support

- Replacement or refund for products not performing as stated on the datasheet
- Valid for 12 months from date of delivery
- Response to your inquiry within 24 hours
- We provide support in Chinese, English, French, German, Japanese and Spanish
- Extensive multi-media technical resources to help you
- We investigate all quality concerns to ensure our products perform to the highest standards

If the product does not perform as described on this datasheet, we will offer a refund or replacement. For full details of the Abpromise, please visit <https://www.abcam.co.jp/abpromise> or contact our technical team.

### Terms and conditions

- Guarantee only valid for products bought direct from Abcam or one of our authorized distributors