


Anti-CP110 antibody ab99337

2 References [画像数 2](#)

製品の概要

製品名	Anti-CP110 antibody
製品の詳細	Rabbit polyclonal to CP110
由来種	Rabbit
アプリケーション	適用あり: WB, IP
種交差性	交差種: Human 交差が予測される動物種: Pig, Chimpanzee, Ferret, Rhesus monkey, Gorilla 
免疫原	Synthetic peptide, corresponding to a region within amino acids within residues 575-625 of Human CP110 (CAH18111.1).
ポジティブ・コントロール	HeLa and 293T whole cell lysates
特記事項	<p>The Life Science industry has been in the grips of a reproducibility crisis for a number of years. Abcam is leading the way in addressing this with our range of recombinant monoclonal antibodies and knockout edited cell lines for gold-standard validation. Please check that this product meets your needs before purchasing.</p> <p>If you have any questions, special requirements or concerns, please send us an inquiry and/or contact our Support team ahead of purchase. Recommended alternatives for this product can be found below, along with publications, customer reviews and Q&As</p>

製品の特性

製品の状態	Liquid
保存方法	Shipped at 4°C. Upon delivery aliquot and store at -20°C. Avoid freeze / thaw cycles.
バッファー	pH: 6.8 Preservative: 0.09% Sodium azide Constituents: Tris buffered saline, 0.1% BSA
精製度	Immunogen affinity purified
ポリ/モノ	ポリクローナル
アイソタイプ	IgG

アプリケーション

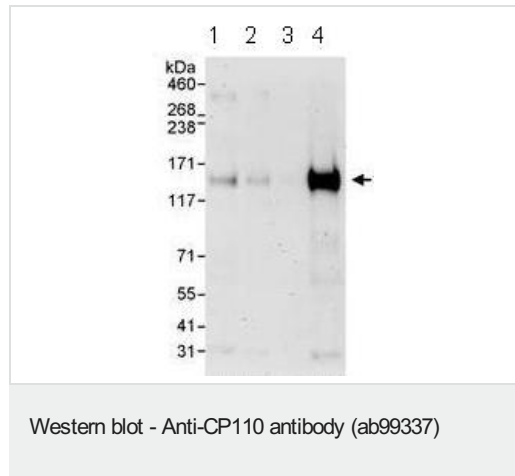
The Abpromise guarantee Abpromise保証は、 次のテスト済みアプリケーションにおけるab99337の使用に適用されます
 アプリケーションノートには、推奨の開始希釈率がありますが、適切な希釈率につきましてはご検討ください。

アプリケーション	Abreviews	特記事項
WB		1/2000 - 1/10000. Predicted molecular weight: 113 kDa.
IP		Use at 2-5 µg/mg of lysate.

ターゲット情報

機能	Necessary for centrosome duplication at different stages of procentriole formation. Collaborates with CEP97, being involved in the suppression of a cilia assembly program. Required for correct spindle formation and has a role in regulating cytokinesis and genome stability via cooperation with CALM1 and CETN2.
組織特異性	Highly expressed in testis. Detected at intermediate levels in spleen, thymus, prostate, small intestine, colon and peripheral blood leukocytes.
翻訳後修飾	Phosphorylated by CDKs. Ubiquitinated by the SCF(Cyclin F) during G2 phase, leading to its degradation by the proteasome and preventing centrosome reduplication.
細胞内局在	Cytoplasm > cytoskeleton > centrosome > centriole. Recruited early and then associates with the growing distal tips.

画像



All lanes : Anti-CP110 antibody (ab99337) at 0.04 µg/ml

Lane 1 : HeLa whole cell lysate at 50 µg

Lane 2 : HeLa whole cell lysate at 15 µg

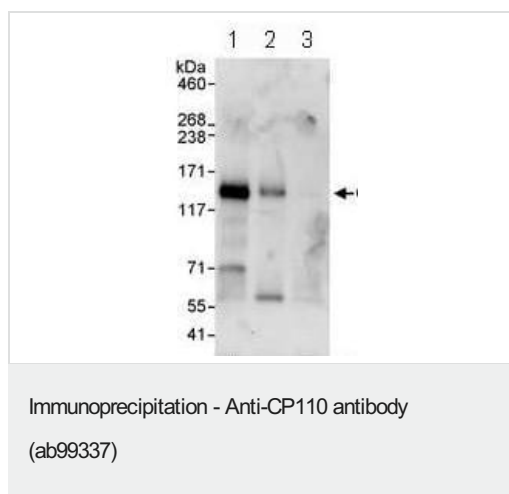
Lane 3 : HeLa whole cell lysate at 5 µg

Lane 4 : 293T whole cell lysate at 50 µg

Developed using the ECL technique.

Predicted band size: 113 kDa

Exposure time: 3 minutes



ab99337 at 1 µg/ml detecting CP110 in HeLa whole cell lysate by WB following IP.

Lane 1: ab99337 IP at 3 µg/mg of lysate

Lane 2: IP with an antibody which recognizes an downstream epitope of CP110

Lane 3: control IgG.

In each case, 1 mg of lysate was used for IP and 20% of the IP was loaded.

Detection: Chemiluminescence with an exposure time of 30 seconds.

Please note: All products are "FOR RESEARCH USE ONLY. NOT FOR USE IN DIAGNOSTIC PROCEDURES"

Our Abpromise to you: Quality guaranteed and expert technical support

- Replacement or refund for products not performing as stated on the datasheet
- Valid for 12 months from date of delivery
- Response to your inquiry within 24 hours
- We provide support in Chinese, English, French, German, Japanese and Spanish
- Extensive multi-media technical resources to help you
- We investigate all quality concerns to ensure our products perform to the highest standards

If the product does not perform as described on this datasheet, we will offer a refund or replacement. For full details of the Abpromise, please visit <https://www.abcam.co.jp/abpromise> or contact our technical team.

Terms and conditions

- Guarantee only valid for products bought direct from Abcam or one of our authorized distributors