




# Anti-COPB2 antibody ab2915

**2 References**   **画像数 1**

### 製品の概要

製品名	Anti-COPB2 antibody
製品の詳細	Rabbit polyclonal to COPB2
由来種	Rabbit
特異性	Detects coatamer-protein I beta (COP I beta).
アプリケーション	<b>適用あり:</b> WB
種交差性	<b>交差種:</b> Rat <b>交差が予測される動物種:</b> Mouse, Cow, Cynomolgus monkey 
免疫原	Synthetic peptide corresponding to Rat COPB2 aa 494-511. Sequence: KVLAAQETHEGVTEDEGIE  (Peptide available as <b>ab4933</b> )
	 <b>Run BLAST with</b>  <b>Run BLAST with</b>

### 特記事項

The Life Science industry has been in the grips of a reproducibility crisis for a number of years. Abcam is leading the way in addressing this with our range of recombinant monoclonal antibodies and knockout edited cell lines for gold-standard validation. Please check that this product meets your needs before purchasing.

If you have any questions, special requirements or concerns, please send us an inquiry and/or contact our Support team ahead of purchase. Recommended alternatives for this product can be found below, along with publications, customer reviews and Q&As

### 製品の特性

製品の状態	Liquid
保存方法	Shipped at 4°C. Store at +4°C short term (1-2 weeks). Upon delivery aliquot. Store at -20°C or -80°C. Avoid freeze / thaw cycle.
バッファー	Preservative: 0.05% Sodium azide Constituents: 0.1% BSA, 99% PBS
精製度	Immunogen affinity purified
一次抗体 備考	Coatamer proteins are involved in regulating transport between the endoplasmic reticulum (ER) and the Golgi complex and in intra-Golgi transport. There exist two coatamer-protein mechanisms

(COP I and COP II) and although they have mechanistic parallels, they are molecularly distinct. The COP I coat is comprised of seven subunits (alpha-, beta-, beta'-, gamma-, delta-, epsilon-, and zeta-COP) in a complex called coatomer. Assembly of the coatomer (COP I) onto non-clathrin coated vesicles is regulated by ADP-ribosylation factor (ARF). Vesicle formation, budding, fusion, and disassembly is dependent on GDP-GTP exchange, COP I, and ARF. COP I has been shown to facilitate retrograde intracellular transport from the ER to the Golgi complex. By contrast, COP II facilitates anterograde transport between these subcellular organelles. COP II has been shown to be independently and selectively recruited to the ER relative to COP I subunits.

ポリ/モノ

ポリクローナル

アイソタイプ

IgG

## アプリケーション

The Abpromise guarantee

**Abpromise保証は、次のテスト済みアプリケーションにおけるab2915の使用に適用されます**

アプリケーションノートには、推奨の開始希釈率がありますが、適切な希釈率につきましてはご検討ください。

アプリケーション	Abreviews	特記事項
WB		Use a concentration of 2 µg/ml. Predicted molecular weight: 115 kDa.

## ターゲット情報

### 機能

The coatomer is a cytosolic protein complex that binds to dilysine motifs and reversibly associates with Golgi non-clathrin-coated vesicles, which further mediate biosynthetic protein transport from the ER, via the Golgi up to the trans Golgi network. Coatomer complex is required for budding from Golgi membranes, and is essential for the retrograde Golgi-to-ER transport of dilysine-tagged proteins. In mammals, the coatomer can only be recruited by membranes associated to ADP-ribosylation factors (ARFs), which are small GTP-binding proteins; the complex also influences the Golgi structural integrity, as well as the processing, activity, and endocytic recycling of LDL receptors.

This coatomer complex protein, essential for Golgi budding and vesicular trafficking, is a selective binding protein (RACK) for protein kinase C, epsilon type. It binds to Golgi membranes in a GTP-dependent manner.

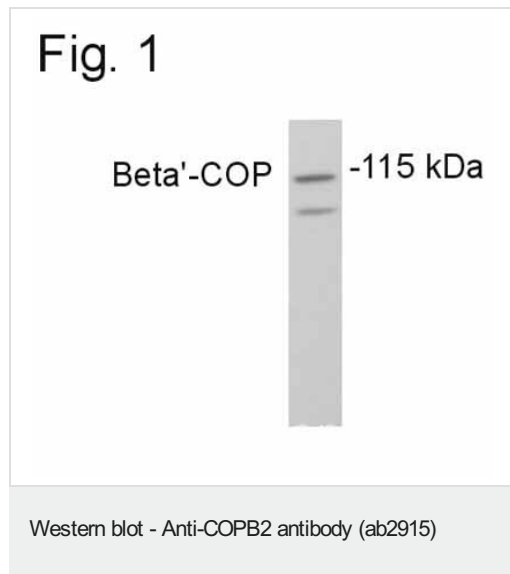
### 配列類似性

Belongs to the WD repeat COB2 family.  
Contains 9 WD repeats.

### 細胞内局在

Cytoplasm. Golgi apparatus membrane. Cytoplasmic vesicle > COPI-coated vesicle membrane. The coatomer is cytoplasmic or polymerized on the cytoplasmic side of the Golgi, as well as on the vesicles/buds originating from it.

## 画像



Western blot detection of beta COP I from PC-12 cell lysates using ab2915.

**Please note:** All products are "FOR RESEARCH USE ONLY. NOT FOR USE IN DIAGNOSTIC PROCEDURES"

#### Our Abpromise to you: Quality guaranteed and expert technical support

---

- Replacement or refund for products not performing as stated on the datasheet
- Valid for 12 months from date of delivery
- Response to your inquiry within 24 hours
- We provide support in Chinese, English, French, German, Japanese and Spanish
- Extensive multi-media technical resources to help you
- We investigate all quality concerns to ensure our products perform to the highest standards

If the product does not perform as described on this datasheet, we will offer a refund or replacement. For full details of the Abpromise, please visit <https://www.abcam.co.jp/abpromise> or contact our technical team.

#### Terms and conditions

---

- Guarantee only valid for products bought direct from Abcam or one of our authorized distributors