

# Anti-COMMD1/MURR1 antibody ab224727

**2 References** [画像数 4](#)

### 製品の概要

<b>製品名</b>	Anti-COMMD1/MURR1 antibody
<b>製品の詳細</b>	Rabbit polyclonal to COMMD1/MURR1
<b>由来種</b>	Rabbit
<b>アプリケーション</b>	<b>適用あり:</b> IHC-P, IP, WB
<b>種交差性</b>	<b>交差種:</b> Human
<b>免疫原</b>	Recombinant full length protein corresponding to Human COMMD1/MURR1 aa 1 to the C-terminus. Database link: <a href="#">Q8N668</a>
	<a href="#">Run BLAST with</a> <a href="#">Run BLAST with</a>
<b>ポジティブ・コントロール</b>	WB: A549, Jurkat, MCF7, HeLa and HepG2 whole cell lysate. IP: HepG2 whole cell lysate. IHC-P: Human adrenal gland tissue and liver cancer tissue.
<b>特記事項</b>	<p>The Life Science industry has been in the grips of a reproducibility crisis for a number of years. Abcam is leading the way in addressing this with our range of recombinant monoclonal antibodies and knockout edited cell lines for gold-standard validation. Please check that this product meets your needs before purchasing.</p> <p>If you have any questions, special requirements or concerns, please send us an inquiry and/or contact our Support team ahead of purchase. Recommended alternatives for this product can be found below, along with publications, customer reviews and Q&amp;As</p>

### 製品の特性

<b>製品の状態</b>	Liquid
<b>保存方法</b>	Shipped at 4°C. Store at +4°C short term (1-2 weeks). Upon delivery aliquot. Store at -20°C long term. Avoid freeze / thaw cycle.
<b>バッファー</b>	pH: 7.30 Preservative: 0.02% Sodium azide Constituents: 50% Glycerol (glycerin, glycerine), PBS
<b>精製度</b>	Immunogen affinity purified
<b>ポリ/モノ</b>	ポリクローナル
<b>アイソタイプ</b>	IgG

## アプリケーション

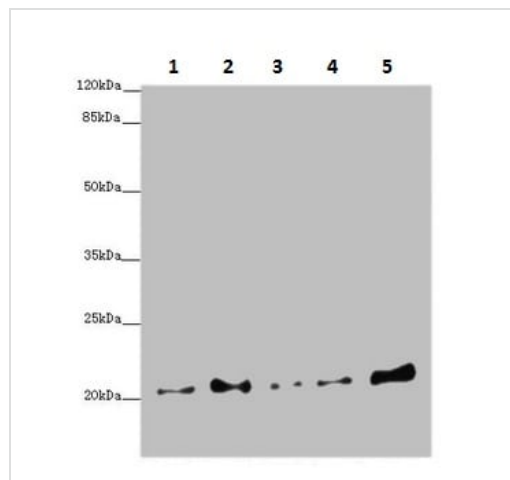
The Abpromise guarantee **Abpromise保証は、次のテスト済みアプリケーションにおけるab224727の使用に適用されず**  
アプリケーションノートには、推奨の開始希釈率がありますが、適切な希釈率につきましてはご検討ください。

アプリケーション	Abreviews	特記事項
IHC-P		1/20 - 1/200.
IP		1/200 - 1/2000.
WB		1/1000 - 1/5000. Detects a band of approximately 21 kDa (predicted molecular weight: 22, 18 kDa).

## ターゲット情報

機能	<p>Proposed scaffold protein that is implicated in diverse physiological processes and whose function may be in part linked to its ability to regulate ubiquitination of specific cellular proteins. Can modulate activity of cullin-RING E3 ubiquitin ligase (CRL) complexes by displacing CAND1; in vitro promotes CRL E3 activity and dissociates CAND1 from CUL1 and CUL2 (PubMed:21778237). Promotes ubiquitination of NF-kappa-B subunit RELA and its subsequent proteasomal degradation. Down-regulates NF-kappa-B activity (PubMed:15799966, PubMed:17183367, PubMed:20048074). Involved in the regulation of membrane expression and ubiquitination of SLC12A2 (PubMed:23515529). Modulates Na(+) transport in epithelial cells by regulation of apical cell surface expression of amiloride-sensitive sodium channel (ENaC) subunits and by promoting their ubiquitination presumably involving NEDD4L. Promotes the localization of SCNN1D to recycling endosomes (PubMed:14645214, PubMed:20237237, PubMed:21741370). Promotes CFTR cell surface expression through regulation of its ubiquitination (PubMed:21483833). Down-regulates SOD1 activity by interfering with its homodimerization (PubMed:20595380). Plays a role in copper ion homeostasis. Involved in copper-dependent ATP7A trafficking between the trans-Golgi network and vesicles in the cell periphery; the function is proposed to depend on its association within the CCC complex and cooperation with the WASH complex on early endosomes (PubMed:25355947). Can bind one copper ion per monomer (PubMed:17309234). May function to facilitate biliary copper excretion within hepatocytes. Binds to phosphatidylinositol 4,5-bisphosphate (PtdIns(4,5)P2) (PubMed:18940794). Involved in the regulation of HIF1A-mediated transcription; competes with ARNT/Hif-1-beta for binding to HIF1A resulting in decreased DNA binding and impaired transcriptional activation by HIF-1 (PubMed:20458141).</p>
組織特異性	<p>Ubiquitous. Highest expression in the liver, with lower expression in brain, lung, placenta, pancreas, small intestine, heart, skeletal muscle, kidney and placenta. Down-regulated in cancer tissues.</p>
配列類似性	<p>Contains 1 COMM domain.</p>
翻訳後修飾	<p>Acetylated by EP300 in a stimuli-specific manner; protecting it from XIAP-mediated proteasomal degradation and required for interaction with REIA in response to stress. Ubiquitinated; undergoes both 'Lys-63'- and 'Lys-48'-linked polyubiquitination. Ubiquitinated by XIAP, leading to its proteasomal degradation.</p>
細胞内局在	<p>Nucleus. Cytoplasm. Endosome membrane. Cytoplasmic vesicle. Early endosome. Recycling endosome. Shuttles between nucleus and cytosol. Detected in perinuclear foci that may be aggregates containing misfolded, ubiquitinated proteins.</p>

## 画像



Western blot - Anti-COMMD1/MURR1 antibody (ab224727)

**All lanes** : Anti-COMMD1/MURR1 antibody (ab224727) at 1/1000 dilution

**Lane 1** : A549 (human lung carcinoma cell line) whole cell lysate

**Lane 2** : Jurkat (human T cell leukemia cell line from peripheral blood) whole cell lysate

**Lane 3** : MCF7 (human breast adenocarcinoma cell line) whole cell lysate

**Lane 4** : HeLa (human epithelial cell line from cervix adenocarcinoma) whole cell lysate

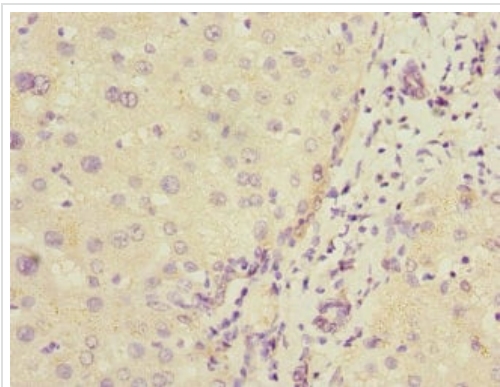
**Lane 5** : HepG2 (human liver hepatocellular carcinoma cell line) whole cell lysate

### Secondary

**All lanes** : Goat polyclonal to Rabbit IgG at 1/10000 dilution

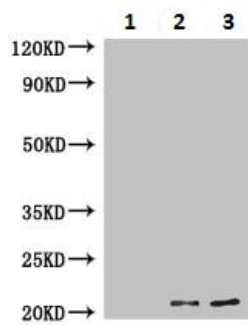
**Predicted band size**: 22, 18 kDa

**Observed band size**: 21 kDa



Immunohistochemistry (Formalin/PFA-fixed paraffin-embedded sections) - Anti-COMMD1/MURR1 antibody (ab224727)

Paraffin-embedded human liver cancer tissue stained for COMMD1/MURR1 with ab224727 at 1/20 dilution in immunohistochemical analysis.



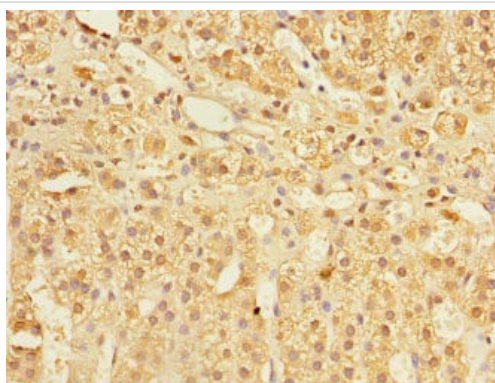
Immunoprecipitation - Anti-COMMD1/MURR1 antibody (ab224727)

COMMD1/MURR1 was immunoprecipitated from 0.5 mg of HepG2 (human liver hepatocellular carcinoma cell line) whole cell lysate with ab224727 at 1/200 dilution. Western blot was performed from the immunoprecipitate using ab224727 at 1/1000 dilution. HRP-conjugated anti-rabbit IgG, specific to the non-reduced form of IgG, was used as secondary antibody at 1/10000 dilution.

Lane 1: Rabbit monoclonal IgG instead of ab224727 in HepG2 whole cell lysate.

Lane 2: ab224727 IP in HepG2 whole cell lysate.

Lane 3: HepG2 whole cell lysate 20  $\mu$ g (Input).



Immunohistochemistry (Formalin/PFA-fixed paraffin-embedded sections) - Anti-COMMD1/MURR1 antibody (ab224727)

Paraffin-embedded human adrenal gland tissue stained for COMMD1/MURR1 with ab224727 at 1/20 dilution in immunohistochemical analysis.

**Please note:** All products are "FOR RESEARCH USE ONLY. NOT FOR USE IN DIAGNOSTIC PROCEDURES"

### Our Abpromise to you: Quality guaranteed and expert technical support

- Replacement or refund for products not performing as stated on the datasheet
- Valid for 12 months from date of delivery
- Response to your inquiry within 24 hours
- We provide support in Chinese, English, French, German, Japanese and Spanish
- Extensive multi-media technical resources to help you
- We investigate all quality concerns to ensure our products perform to the highest standards

If the product does not perform as described on this datasheet, we will offer a refund or replacement. For full details of the Abpromise, please visit <https://www.abcam.co.jp/abpromise> or contact our technical team.

## **Terms and conditions**

---

- Guarantee only valid for products bought direct from Abcam or one of our authorized distributors