

### Anti-COLQ antibody ab127048

面格粉?

医薬用外劇物

#### 製品の概要

製品名	Anti-COLQ antibody
製品の詳細	Rabbit polyclonal to COLQ
由来種	Rabbit
アプリケーション	<b>適用あり:</b> WB, IHC-P
種交差性	<b>交差種:</b> Human
免疫原	Recombinant fragment, corresponding to a region within amino acids 248-420 of Human COLQ (UniProt Q9Y215).
ポジティブ・コントロール	HepG2 whole cell lysate, Human colon carcinoma tissue
特記事項	<p>The Life Science industry has been in the grips of a reproducibility crisis for a number of years. Abcam is leading the way in addressing this with our range of recombinant monoclonal antibodies and knockout edited cell lines for gold-standard validation. Please check that this product meets your needs before purchasing.</p> <p>If you have any questions, special requirements or concerns, please send us an inquiry and/or contact our Support team ahead of purchase. Recommended alternatives for this product can be found below, along with publications, customer reviews and Q&amp;As</p>

#### 製品の特性

製品の状態	Liquid
保存方法	Shipped at 4°C. Upon delivery aliquot. Store at -20°C or -80°C. Avoid freeze / thaw cycle.
バッファー	<p>pH: 7.00</p> <p>Preservative: 0.01% Thimerosal (merthiolate)</p> <p>Constituents: 1.21% Tris, 0.75% Glycine, 20% Glycerol (glycerin, glycerine)</p>
精製度	Immunogen affinity purified
ポリ/モノ	ポリクローナル
アイソタイプ	IgG

#### アプリケーション

## The Abpromise guarantee

**Abpromise保証は、**次のテスト済みアプリケーションにおけるab127048の使用に適用されます

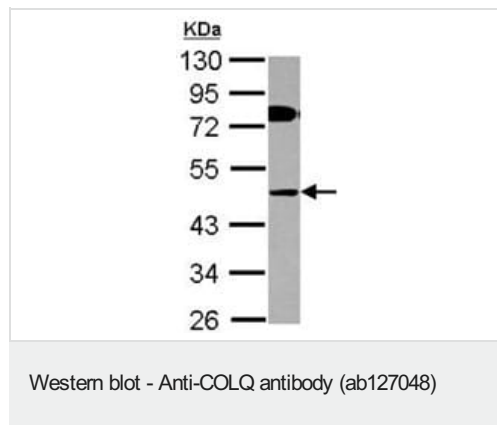
アプリケーションノートには、推奨の開始希釈率がありますが、適切な希釈率につきましてはご確認ください。

アプリケーション	Abreviews	特記事項
WB		1/500 - 1/3000. Predicted molecular weight: 48 kDa.
IHC-P		1/100 - 1/500. Perform heat mediated antigen retrieval with citrate buffer pH 6 before commencing with IHC staining protocol.

## ターゲット情報

機能	Anchors the catalytic subunits of asymmetric AChE to the synaptic basal lamina.
組織特異性	Found at the end plate of skeletal muscle.
関連疾患	Defects in COLQ are the cause of congenital myasthenic syndrome Engel type (CMSE) [MIM:603034]; also known as end-plate acetylcholinesterase deficiency or congenital myasthenic syndrome type IC (CMS-IC). CMSE is a rare autosomal recessive congenital myasthenic syndrome characterized by onset during childhood, generalized weakness, abnormal fatigability on exertion, refractoriness to acetylcholinesterase drugs, decremental electromyographic response and morphological abnormalities of the neuromuscular junctions.
配列類似性	Belongs to the COLQ family. Contains 2 collagen-like domains.
ドメイン	The proline-rich attachment domain (PRAD) binds the AChE catalytic subunits.
翻訳後修飾	The triple-helical tail is stabilized by disulfide bonds at each end.
細胞内局在	Cell junction > synapse.

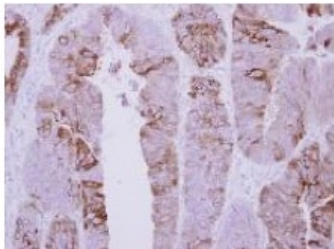
## 画像



Anti-COLQ antibody (ab127048) at 1/1000 dilution + HepG2 whole cell lysate at 30 µg

**Predicted band size:** 48 kDa

10% SDS PAGE



**ab1267048**, at a dilution of 1/500, staining COLQ in paraffin-embedded Human colon carcinoma tissue by Immunohistochemistry.

Immunohistochemistry (Formalin/PFA-fixed paraffin-embedded sections) - Anti-COLQ antibody (ab127048)

**Please note:** All products are "FOR RESEARCH USE ONLY. NOT FOR USE IN DIAGNOSTIC PROCEDURES"

### Our Abpromise to you: Quality guaranteed and expert technical support

---

- Replacement or refund for products not performing as stated on the datasheet
- Valid for 12 months from date of delivery
- Response to your inquiry within 24 hours
- We provide support in Chinese, English, French, German, Japanese and Spanish
- Extensive multi-media technical resources to help you
- We investigate all quality concerns to ensure our products perform to the highest standards

If the product does not perform as described on this datasheet, we will offer a refund or replacement. For full details of the Abpromise, please visit <https://www.abcam.co.jp/abpromise> or contact our technical team.

### Terms and conditions

---

- Guarantee only valid for products bought direct from Abcam or one of our authorized distributors