


Anti-Collagen VI antibody ab6588

★★★★★ [21 Abreviews](#) [134 References](#) [画像数 1](#)

製品の概要

製品名	Anti-Collagen VI antibody
製品の詳細	Rabbit polyclonal to Collagen VI
由来種	Rabbit
特異性	Negligible cross-reactivity with Type I, II, III, IV or V collagens. Non-specific cross reaction of anti-collagen antibodies with other human serum proteins or non-collagen extracellular matrix proteins is negligible.
アプリケーション	適用あり: WB
種交差性	交差種: Human 交差が予測される動物種: Mouse, Rat, Sheep, Rabbit, Dog, Pig, Mammals 
免疫原	Full length native protein (purified) corresponding to Human Collagen VI aa 1-1028. Collagen Type VI from human and bovine placenta. Database link: P12109
ポジティブ・コントロール	WB: HepG2 whole cell lysate.
特記事項	<p>At least 11 genetically distinct gene products are collectively referred to as 'collagen types' or other proteins and proteoglycans of the extracellular matrix. In humans, collagens are composed of about 20 unique protein chains which under go various types of post-translational modifications and are ultimately assembled into a triple helix. This results in great diversity between collagen types. Collagens are highly conserved throughout evolution and are characterized by an uninterrupted "Glycine-X-Y" triplet repeat that is a necessary part of the triple helical structure. For these reasons it is often extremely difficult to generate antibodies with specificities to collagens. The development of type specific antibodies is dependent on NON-DENATURED three-dimensional epitopes. This preparation results in a native conformation of the protein.</p> <p>The Life Science industry has been in the grips of a reproducibility crisis for a number of years. Abcam is leading the way in addressing this with our range of recombinant monoclonal antibodies and knockout edited cell lines for gold-standard validation. Please check that this product meets your needs before purchasing.</p> <p>If you have any questions, special requirements or concerns, please send us an inquiry and/or contact our Support team ahead of purchase. Recommended alternatives for this product can be found below, along with publications, customer reviews and Q&As</p>

製品の特性

製品の状態	Liquid
保存方法	Shipped at 4°C. Store at +4°C short term (1-2 weeks). Upon delivery aliquot. Store at -20°C long term. Avoid freeze / thaw cycle.
バッファー	Preservative: 0.01% Sodium azide Constituents: 0.44% Sodium chloride, 4.8% Sodium borate, 0.15% EDTA
精製度	Immunogen affinity purified
特記事項 (精製)	Immunoaffinity chromatography using immobilized antigens followed by extensive cross-adsorption against other collagens, human serum proteins and non-collagen extracellular matrix proteins to remove any unwanted specificities.
ポリ/モノ	ポリクローナル
アイソタイプ	IgG

アプリケーション

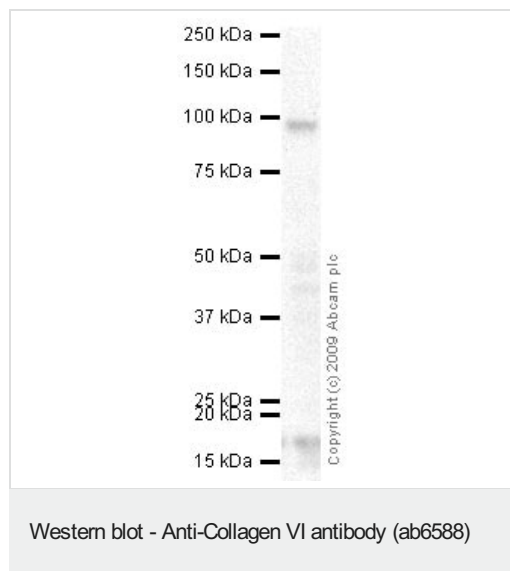
The Abpromise guarantee **Abpromise保証は、次のテスト済みアプリケーションにおけるab6588の使用に適用されます**
 アプリケーションノートには、推奨の開始希釈率がありますが、適切な希釈率につきましてはご検討ください。

アプリケーション	Abreviews	特記事項
WB	★★★★★ (1)	1/1000 - 1/10000. Detects a band of approximately 100 kDa (predicted molecular weight: 108 kDa). This product is not recommended for use under denaturing conditions in WB, IP, and ELISA. We would suggest testing it under native conditions.

ターゲット情報

機能	Collagen VI acts as a cell-binding protein.
関連疾患	Defects in COL6A1 are a cause of Bethlem myopathy (BM) [MIM:158810]. BM is a rare autosomal dominant proximal myopathy characterized by early childhood onset (complete penetrance by the age of 5) and joint contractures most frequently affecting the elbows and ankles. Defects in COL6A1 are a cause of Ullrich congenital muscular dystrophy (UCMD) [MIM:254090]; also known as Ullrich scleroatonic muscular dystrophy. UCMD is an autosomal recessive congenital myopathy characterized by muscle weakness and multiple joint contractures, generally noted at birth or early infancy. The clinical course is more severe than in Bethlem myopathy.
配列類似性	Belongs to the type VI collagen family. Contains 3 VWFA domains.
翻訳後修飾	Prolines at the third position of the tripeptide repeating unit (G-X-Y) are hydroxylated in some or all of the chains.
細胞内局在	Secreted > extracellular space > extracellular matrix.

画像



Anti-Collagen VI antibody (ab6588) at 1/5000 dilution + HepG2
(Human hepatocellular liver carcinoma cell line) Whole Cell Lysate
at 10 µg

Secondary

Goat polyclonal to Rabbit IgG - H&L - Pre-Adsorbed (HRP) at
1/3000 dilution

Predicted band size: 108 kDa

Observed band size: 100 kDa

Please note: All products are "FOR RESEARCH USE ONLY. NOT FOR USE IN DIAGNOSTIC PROCEDURES"

Our Abpromise to you: Quality guaranteed and expert technical support

- Replacement or refund for products not performing as stated on the datasheet
- Valid for 12 months from date of delivery
- Response to your inquiry within 24 hours
- We provide support in Chinese, English, French, German, Japanese and Spanish
- Extensive multi-media technical resources to help you
- We investigate all quality concerns to ensure our products perform to the highest standards

If the product does not perform as described on this datasheet, we will offer a refund or replacement. For full details of the Abpromise, please visit <https://www.abcam.co.jp/abpromise> or contact our technical team.

Terms and conditions

- Guarantee only valid for products bought direct from Abcam or one of our authorized distributors