

Anti-Cofilin (phospho S3) antibody [EPR24753-28] ab283500

リコンビナント **RabMAb**

1 References **画像数 12**

製品の概要

製品名	Anti-Cofilin (phospho S3) antibody [EPR24753-28]
製品の詳細	Rabbit monoclonal [EPR24753-28] to Cofilin (phospho S3)
由来種	Rabbit
アプリケーション	適用あり: WB, IHC-P, Dot blot, ICC/IF, Flow Cyt (Intra) 適用なし: IP
種交差性	交差種: Mouse, Rat, Human
免疫原	Synthetic peptide. This information is proprietary to Abcam and/or its suppliers.
ポジティブ・コントロール	WB: HeLa, 293T, NIH/3T3 and C6 lysates all without alkaline phosphatase treatment. IHC-P: Human breast carcinoma, Human stomach, Mouse colon, Rat colon tissues all without alkaline phosphatase treatment. ICC/IF: HeLa cells without alkaline phosphatase treatment. Flow Cyt: HeLa cell. Dot Blot: Cofilin-1 (phospho S3) peptide.
特記事項	This product is a recombinant monoclonal antibody, which offers several advantages including: <ul style="list-style-type: none"> - High batch-to-batch consistency and reproducibility - Improved sensitivity and specificity - Long-term security of supply - Animal-free production For more information see here . Our RabMAb [®] technology is a patented hybridoma-based technology for making rabbit monoclonal antibodies. For details on our patents, please refer to RabMAb[®] patents .

製品の特性

製品の状態	Liquid
保存方法	Shipped at 4°C. Store at +4°C short term (1-2 weeks). Upon delivery aliquot. Store at -20°C. Avoid freeze / thaw cycle.
バッファー	pH: 7.20 Preservative: 0.01% Sodium azide Constituents: 59% PBS, 40% Glycerol (glycerin, glycerine), 0.05% BSA
精製度	Protein A purified
ポリ/モノ	モノクローナル

クローン名	EPR24753-28
アイソタイプ	IgG

アプリケーション

The Abpromise guarantee Abpromise保証は、次のテスト済みアプリケーションにおけるab283500の使用に適用されます
アプリケーションノートには、推奨の開始希釈率がありますが、適切な希釈率につきましてはご確認ください。

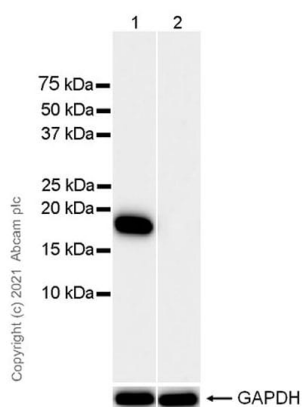
アプリケーション	Abreviews	特記事項
WB		1/1000. Predicted molecular weight: 18 kDa.
IHC-P		1/5000. Perform heat mediated antigen retrieval with Tris/EDTA buffer pH 9.0 before commencing with IHC staining protocol.
Dot blot		1/1000.
ICC/IF		1/1000.
Flow Cyt (Intra)		1/600.

追加情報 Is unsuitable for IP.

ターゲット情報

機能	Controls reversibly actin polymerization and depolymerization in a pH-sensitive manner. It has the ability to bind G- and F-actin in a 1:1 ratio of cofilin to actin. It is the major component of intranuclear and cytoplasmic actin rods.
組織特異性	Widely distributed in various tissues.
配列類似性	Belongs to the actin-binding proteins ADF family. Contains 1 ADF-H domain.
翻訳後修飾	Phosphorylated on Ser-3 in resting cells.
細胞内局在	Nucleus matrix. Cytoplasm > cytoskeleton. Almost completely in nucleus in cells exposed to heat shock or 10% dimethyl sulfoxide.

画像



Western blot - Anti-Cofilin (phospho S3) antibody
[EPR24753-28] (ab283500)

All lanes : Anti-Cofilin (phospho S3) antibody [EPR24753-28]
(ab283500) at 1/1000 dilution

Lane 1 : HeLa (human cervix adenocarcinoma epithelial cell),
whole cell lysate (Untreated membrane)

Lane 2 : HeLa(human cervix adenocarcinoma epithelial cell), whole
cell lysate (Phosphatase treated membrane)

Lysates/proteins at 10 µg per lane.

Secondary

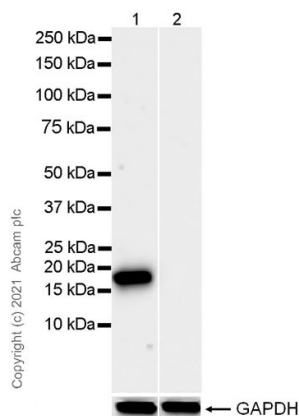
All lanes : Goat Anti-Rabbit IgG H&L (HRP) (**ab97051**) at 1/50000
dilution

Predicted band size: 18 kDa

Observed band size: 18 kDa

Blocking and diluting buffer and concentration: 5% NFDm/TBST

Exposure time: 37 seconds



Western blot - Anti-Cofilin (phospho S3) antibody [EPR24753-28] (ab283500)

All lanes : Anti-Cofilin (phospho S3) antibody [EPR24753-28] (ab283500) at 1/1000 dilution

Lane 1 : 293T (human embryonic kidney epithelial cell), whole cell lysate (Untreated membrane)

Lane 2 : 293T (Phosphatase treated membrane)

Lysates/proteins at 10 µg per lane.

Secondary

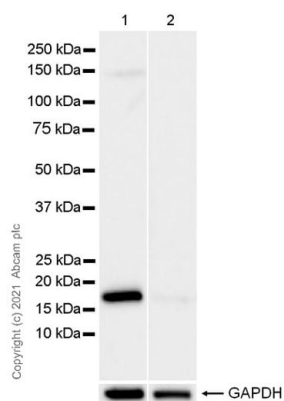
All lanes : Goat Anti-Rabbit IgG, (H+L), Peroxidase conjugated ([ab97051](#)) at 1/50000 dilution

Predicted band size: 18 kDa

Observed band size: 18 kDa

Blocking and diluting buffer and concentration: 5% NFDM/TBST

Exposure time: 15 seconds



Western blot - Anti-Cofilin (phospho S3) antibody [EPR24753-28] (ab283500)

All lanes : Anti-Cofilin (phospho S3) antibody [EPR24753-28] (ab283500) at 1/1000 dilution

Lane 1 : NIH/3T3 (mouse embryonic fibroblast), whole cell lysate (Untreated membrane)

Lane 2 : NIH/3T3 (Phosphatase treated membrane)

Lysates/proteins at 10 µg per lane.

Secondary

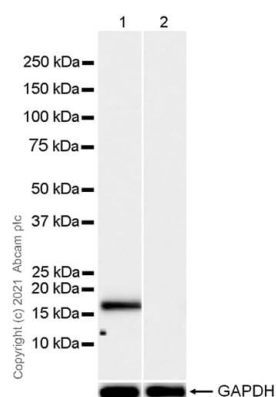
All lanes : Goat Anti-Rabbit IgG, (H+L), Peroxidase conjugated ([ab97051](#)) at 1/50000 dilution

Predicted band size: 18 kDa

Observed band size: 18 kDa

Exposure time: 3 seconds

Blocking and diluting buffer and concentration: 5% NFDM/TBST



Western blot - Anti-Cofilin (phospho S3) antibody
[EPR24753-28] (ab283500)

All lanes : Anti-Cofilin (phospho S3) antibody [EPR24753-28]
(ab283500) at 1/1000 dilution

Lane 1 : C6 (rat glial tumor glial cell), whole cell lysate (Untreated membrane)

Lane 2 : C6 (Phosphatase treated membrane)

Lysates/proteins at 10 µg per lane.

Secondary

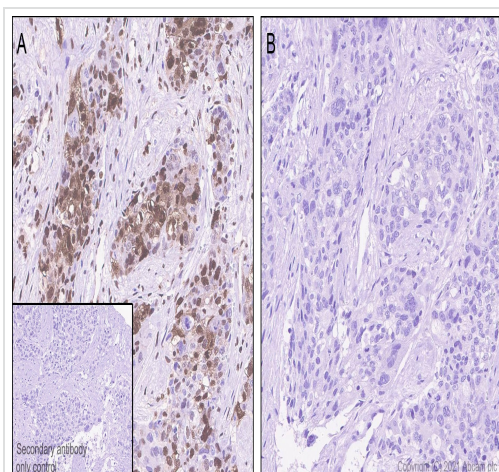
All lanes : Goat Anti-Rabbit IgG, (H+L), Peroxidase conjugated
([ab97051](#)) at 1/50000 dilution

Predicted band size: 18 kDa

Observed band size: 18 kDa

Blocking and diluting buffer and concentration: 5% NFDM/TBST

Exposure time: 10 seconds

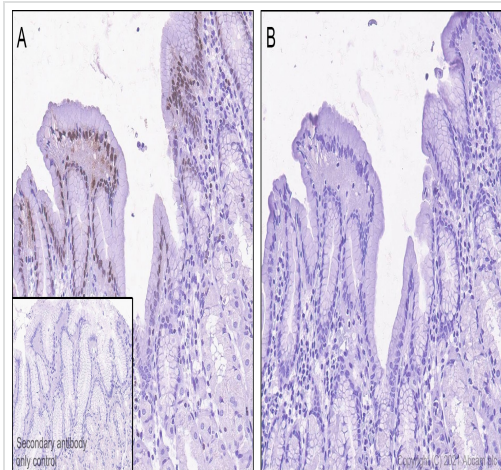


Immunohistochemistry (Formalin/PFA-fixed paraffin-
embedded sections) - Anti-Cofilin (phospho S3)
antibody [EPR24753-28] (ab283500)

Immunohistochemical analysis of paraffin-embedded Human breast carcinoma tissue labelling Cofilin (phospho S3) with ab283500 at 1/5000 (0.121 µg/ml) followed by a ready to use Rabbit specific IHC polymer detection kit HRP/DAB ([ab209101](#)). Positive staining on human breast carcinoma without alkaline phosphatase treatment (image A). (PMID: 27799793) No signal was detected when tissues were treated with alkaline phosphatase (image B). The section was incubated with ab283500 for 30 mins at room temperature. The immunostaining was performed on a Leica Biosystems BOND® RX instrument Counterstained with Hematoxylin.

Secondary antibody only control: Secondary antibody is a ready to use Rabbit specific IHC polymer detection kit HRP/DAB ([ab209101](#)).

Heat mediated antigen retrieval with Tris-EDTA buffer (pH 9.0, epitope retrieval solution2) for 20 mins

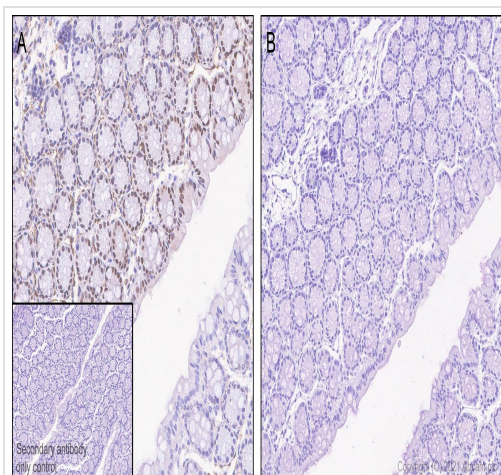


Immunohistochemistry (Formalin/PFA-fixed paraffin-embedded sections) - Anti-Cofilin (phospho S3) antibody [EPR24753-28] (ab283500)

Immunohistochemical analysis of paraffin-embedded Human stomach tissue labelling Cofilin (phospho S3) with ab283500 at 1/5000 (0.121 ug/ml) followed by a ready to use Rabbit specific IHC polymer detection kit HRP/DAB (**ab209101**). Positive staining on human stomach without alkaline phosphatase treatment (image A). No signal was detected when tissues were treated with alkaline phosphatase (image B). The section was incubated with ab283500 for 30 mins at room temperature. The immunostaining was performed on a Leica Biosystems BOND® RX instrument Counterstained with Hematoxylin.

Secondary antibody only control: Secondary antibody is a ready to use Rabbit specific IHC polymer detection kit HRP/DAB (**ab209101**).

Heat mediated antigen retrieval with Tris-EDTA buffer (pH 9.0, epitope retrieval solution2) for 20 mins

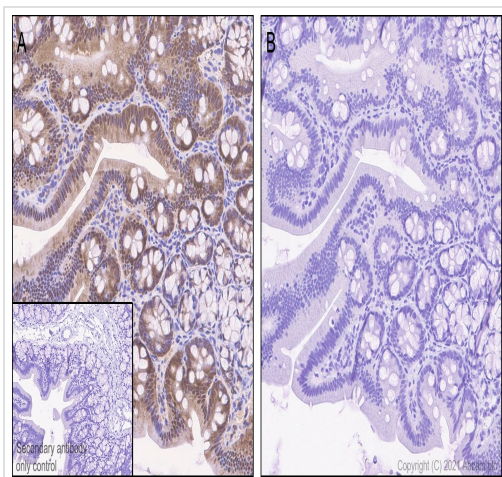


Immunohistochemistry (Formalin/PFA-fixed paraffin-embedded sections) - Anti-Cofilin (phospho S3) antibody [EPR24753-28] (ab283500)

Immunohistochemical analysis of paraffin-embedded Mouse colon tissue labelling Cofilin (phospho S3) with ab283500 at 1/5000 (0.121 ug/ml) followed by a ready to use Rabbit specific IHC polymer detection kit HRP/DAB (**ab209101**). Positive staining on mouse colon without alkaline phosphatase treatment (image A). (PMID: 15649475) No signal was detected when tissues were treated with alkaline phosphatase (image B). The section was incubated with ab283500 for 30 mins at room temperature. The immunostaining was performed on a Leica Biosystems BOND® RX instrument Counterstained with Hematoxylin.

Secondary antibody only control: Secondary antibody is a ready to use Rabbit specific IHC polymer detection kit HRP/DAB (**ab209101**).

Heat mediated antigen retrieval with Tris-EDTA buffer (pH 9.0, epitope retrieval solution2) for 20 mins

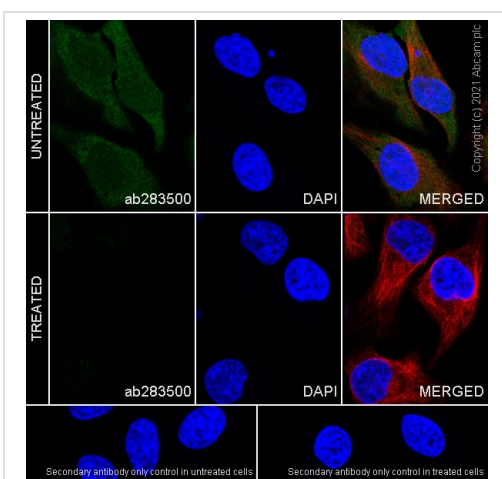


Immunohistochemistry (Formalin/PFA-fixed paraffin-embedded sections) - Anti-Cofilin (phospho S3) antibody [EPR24753-28] (ab283500)

Immunohistochemical analysis of paraffin-embedded Rat colon tissue labelling Cofilin (phospho S3) with ab283500 at 1/5000 (0.121 ug/ml) followed by a ready to use LeicaDS9800 (Bond™ Polymer Refine Detection). Positive staining on rat colon without alkaline phosphatase treatment (image A). No signal was detected when tissues were treated with alkaline phosphatase (image B). The section was incubated with ab283500 for 30 mins at room temperature. The immunostaining was performed on a Leica Biosystems BOND® RX instrument Counterstained with Hematoxylin.

Secondary antibody only control: Secondary antibody is a ready to use LeicaDS9800 (Bond™ Polymer Refine Detection).

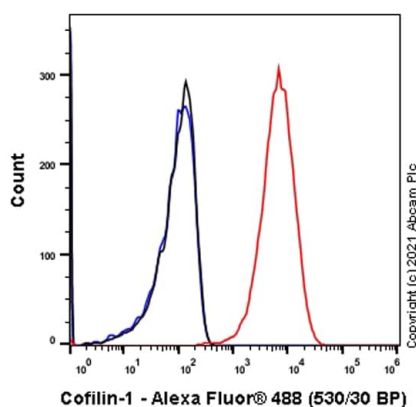
Heat mediated antigen retrieval with Tris-EDTA buffer (pH 9.0, epitope retrieval solution2) for 20 mins



Immunocytochemistry/ Immunofluorescence - Anti-Cofilin (phospho S3) antibody [EPR24753-28] (ab283500)

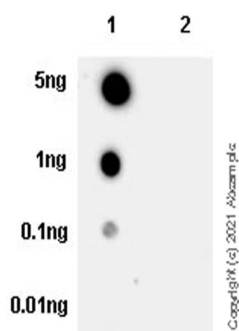
Immunofluorescent analysis of 4% Paraformaldehyde-fixed, 0.1% TritonX-100 permeabilized HeLa cells labelling Cofilin (phospho S3) with ab283500 at 1/1000 (0.604 ug/ml) dilution, followed by **ab150081** Goat Anti-Rabbit IgG H&L (Alexa Fluor® 488) preadsorbed antibody at 1/1000 (2 ug/ml) dilution (Green). Confocal image showing nuclear and cytoplasmic staining in HeLa cells, no staining in HeLa treated with Alkaline Phosphatase (37°C) for 1 hour is observed. **ab195889** Anti-alpha Tubulin mouse monoclonal antibody - Microtubule Marker (Alexa Fluor® 594) was used to counterstain tubulin at 1/200 (2.5 ug/ml) dilution (Red). The Nuclear counterstain was DAPI (Blue).

Secondary antibody only control: Secondary antibody is **ab150081** Goat Anti-Rabbit IgG H&L (Alexa Fluor® 488) preadsorbed at 1/1000 (2 ug/ml) dilution.



Flow Cytometry (Intracellular) - Anti-Cofilin (phospho S3) antibody [EPR24753-28] (ab283500)

Flow cytometric analysis of 4% paraformaldehyde fixed 90% methanol permeabilized HeLa (Human cervix adenocarcinoma epithelial cell) cells labelling Cofilin (phospho S3) with ab283500 at 1/500 dilution (0.1ug) (Red) compared with a Rabbit monoclonal IgG (**ab172730**) (Black) isotype control and an unlabelled control (cells without incubation with primary antibody and secondary antibody) (Blue). A Goat anti rabbit IgG (Alexa Fluor® 488, **ab150077**) at 1/2000 dilution was used as the secondary antibody.



Dot Blot - Anti-Cofilin (phospho S3) antibody [EPR24753-28] (ab283500)

Dot blot analysis of Cofilin (phospho S3) using ab283500 at 1/1000 (0.604 ug/ml) followed by a Goat Anti-Rabbit IgG, (H+L), Peroxidase conjugated (**ab97051**) at 1/100,000 dilution.

Lane 1: Cofilin-1 (phospho S3) peptide

Lane 2: Cofilin-1 non-phospho peptide

Exposure time: 3 minutes

Blocking and diluting buffer and concentration: 5% NFDM/TBST

Why choose a recombinant antibody?



Research with confidence
Consistent and reproducible results



Long-term and scalable supply
Recombinant technology



Success from the first experiment
Confirmed specificity



Ethical standards compliant
Animal-free production

Anti-Cofilin (phospho S3) antibody [EPR24753-28]
(ab283500)

Please note: All products are "FOR RESEARCH USE ONLY. NOT FOR USE IN DIAGNOSTIC PROCEDURES"

Our Abpromise to you: Quality guaranteed and expert technical support

- Replacement or refund for products not performing as stated on the datasheet
- Valid for 12 months from date of delivery
- Response to your inquiry within 24 hours
- We provide support in Chinese, English, French, German, Japanese and Spanish
- Extensive multi-media technical resources to help you
- We investigate all quality concerns to ensure our products perform to the highest standards

If the product does not perform as described on this datasheet, we will offer a refund or replacement. For full details of the Abpromise, please visit <https://www.abcam.co.jp/abpromise> or contact our technical team.

Terms and conditions

- Guarantee only valid for products bought direct from Abcam or one of our authorized distributors