

Anti-Clusterin antibody [EPR2911] ab92548

KO 評価済 リコンビナント RabMAb

★★★★☆ 3 Abreviews 8 References 画像数 6

製品の概要

製品名	Anti-Clusterin antibody [EPR2911]
製品の詳細	Rabbit monoclonal [EPR2911] to Clusterin
由来種	Rabbit
アプリケーション	適用あり: WB, IHC-P
種交差性	交差種: Human
免疫原	Synthetic peptide. This information is proprietary to Abcam and/or its suppliers.
ポジティブ・コントロール	IHC-P: human breast carcinoma and testis tissue; WB: human testis, brain, tonsil, fetal brain and plasma lysates.
特記事項	<p>This product is a recombinant monoclonal antibody, which offers several advantages including:</p> <ul style="list-style-type: none"> - High batch-to-batch consistency and reproducibility - Improved sensitivity and specificity - Long-term security of supply - Animal-free production <p>For more information see here.</p> <p>Our RabMAb® technology is a patented hybridoma-based technology for making rabbit monoclonal antibodies. For details on our patents, please refer to RabMAb® patents.</p> <p>Mouse, Rat: We have preliminary internal testing data to indicate this antibody may not react with these species. Please contact us for more information.</p>

製品の特性

製品の状態	Liquid
保存方法	Shipped at 4°C. Store at +4°C short term (1-2 weeks). Upon delivery aliquot. Store at -20°C long term. Avoid freeze / thaw cycle.
バッファー	<p>pH: 7.20</p> <p>Preservative: 0.01% Sodium azide</p> <p>Constituents: 59% PBS, 40% Glycerol (glycerin, glycerine), 0.05% BSA</p>
精製度	Protein A purified
ポリ/モノ	モノクローナル

クローン名	EPR2911
アイソタイプ	IgG

アプリケーション

The Abpromise guarantee Abpromise保証は、次のテスト済みアプリケーションにおけるab92548の使用に適用されます
アプリケーションノートには、推奨の開始希釈率がありますが、適切な希釈率につきましてはご確認ください。

アプリケーション	Abreviews	特記事項
WB	★★★★★ (1)	1/1000 - 1/2000. Predicted molecular weight: 52 kDa.
IHC-P		1/100 - 1/450. Perform heat mediated antigen retrieval before commencing with IHC staining protocol. See <u>IHC antigen retrieval protocols.</u>

ターゲット情報

機能

Isoform 1 functions as extracellular chaperone that prevents aggregation of nonnative proteins. Prevents stress-induced aggregation of blood plasma proteins. Inhibits formation of amyloid fibrils by APP, APOC2, B2M, CALCA, CSN3, SNCA and aggregation-prone LYZ variants (in vitro). Does not require ATP. Maintains partially unfolded proteins in a state appropriate for subsequent refolding by other chaperones, such as HSPA8/HSC70. Does not refold proteins by itself. Binding to cell surface receptors triggers internalization of the chaperone-client complex and subsequent lysosomal or proteasomal degradation. Secreted isoform 1 protects cells against apoptosis and against cytolysis by complement. Intracellular isoforms interact with ubiquitin and SCF (SKP1-CUL1-F-box protein) E3 ubiquitin-protein ligase complexes and promote the ubiquitination and subsequent proteasomal degradation of target proteins. Promotes proteasomal degradation of COMMD1 and IKBKB. Modulates NF-kappa-B transcriptional activity. Nuclear isoforms promote apoptosis. Mitochondrial isoforms suppress BAX-dependent release of cytochrome c into the cytoplasm and inhibit apoptosis. Plays a role in the regulation of cell proliferation.

組織特異性	Detected in blood plasma, cerebrospinal fluid, milk, seminal plasma and colon mucosa. Detected in the germinal center of colon lymphoid nodules and in colon parasympathetic ganglia of the Auerbach plexus (at protein level). Ubiquitous. Detected in brain, testis, ovary, liver and pancreas, and at lower levels in kidney, heart, spleen and lung.
--------------	--

配列類似性 Belongs to the clusterin family.

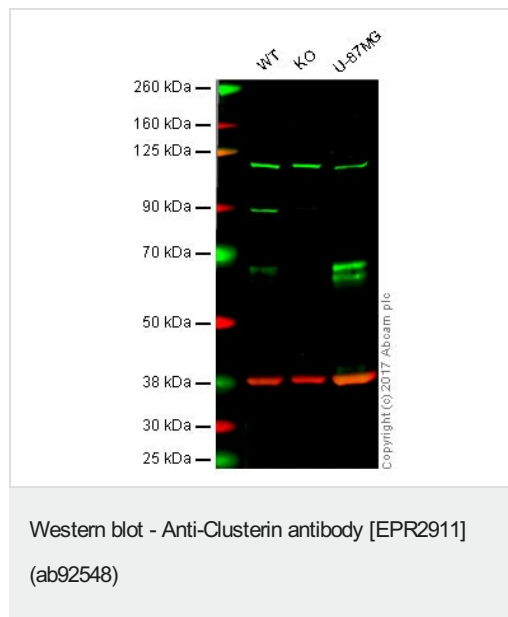
翻訳後修飾

Isoform 1 is proteolytically cleaved on its way through the secretory system, probably within the Golgi lumen.

Polyubiquitinated, leading to proteasomal degradation.

Heavily N-glycosylated. About 30% of the protein mass is comprised of complex N-linked carbohydrate.

細胞内局在 Secreted. Can retrotranslocate from the secretory compartments to the cytosol upon cellular stress and Nucleus. Cytoplasm. Mitochondrion membrane. Cytoplasm, cytosol. Microsome. Endoplasmic reticulum. Cytoplasmic vesicle, secretory vesicle, chromaffin granule. Isoforms lacking the N-terminal signal sequence have been shown to be cytoplasmic and/or nuclear. Secreted isoforms can retrotranslocate from the secretory compartments to the cytosol upon cellular stress. Detected in perinuclear foci that may be aggresomes containing misfolded, ubiquitinated proteins. Detected at the mitochondrion membrane upon induction of apoptosis.



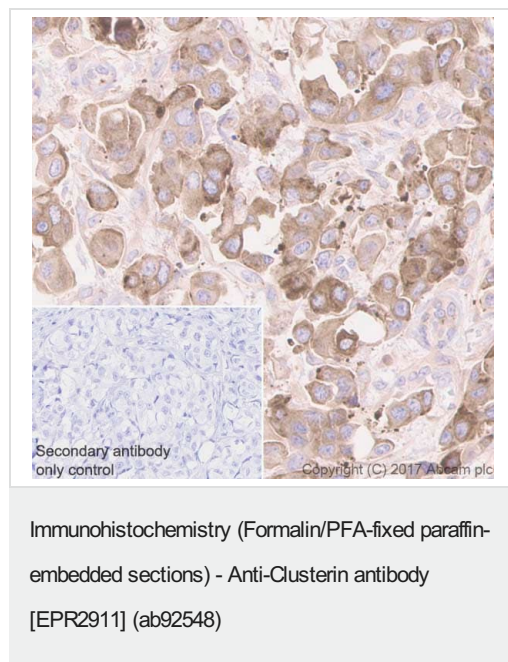
Lane 1: Wild-type HAP1 whole cell lysate (20 µg)

Lane 2: Clusterin knockout HAP1 whole cell lysate (20 µg)

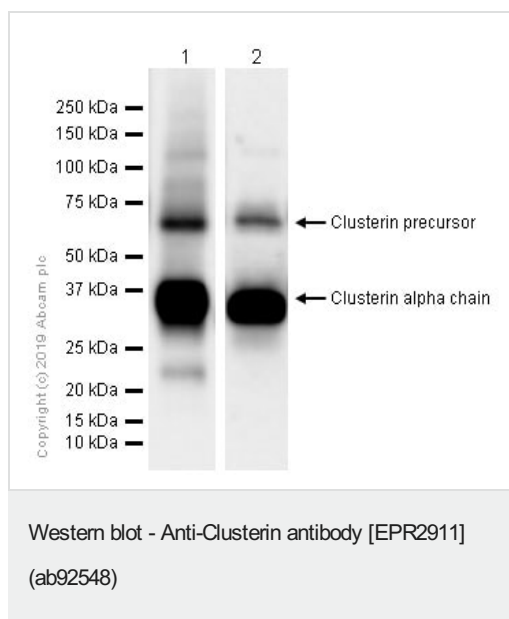
Lane 3: U87-MG whole cell lysate (20 µg)

Lanes 1 - 3: Merged signal (red and green). Green - ab92548 observed at 68 kDa. Red - loading control, **ab9484**, observed at 37 kDa.

ab92548 was shown to recognize Clusterin in wild-type HAP1 cells as signal was lost at the expected MW in Clusterin knockout cells. Additional cross-reactive bands were observed in the wild-type and knockout cells. Wild-type and Clusterin knockout samples were subjected to SDS-PAGE. Ab92548 and **ab9484** (Mouse anti-GAPDH loading control) were incubated overnight at 4°C at 1/1000 dilution and 1/20000 dilution respectively. Blots were developed with Goat anti-Rabbit IgG H&L (IRDye® 800CW) preabsorbed **ab216773** and Goat anti-Mouse IgG H&L (IRDye® 680RD) preabsorbed **ab216776** secondary antibodies at 1/20000 dilution for 1 hour at room temperature before imaging.



Immunohistochemistry (Formalin/PFA-fixed paraffin-embedded sections) analysis of human breast carcinoma tissue sections labeling Clusterin with purified ab92548 at 1/450 dilution (0.23 µg/ml). Heat mediated antigen retrieval was performed using **ab93684** (Tris/EDTA buffer, pH 9.0). ImmunoHistoProbe one step HRP Polymer (ready to use) was used as the secondary antibody. Negative control: PBS instead of the primary antibody. Hematoxylin was used as a counterstain.



All lanes : Anti-Clusterin antibody [EPR2911] (ab92548) at 1/1000 dilution (Purified)

Lane 1 : Human testis lysates

Lane 2 : Human brain lysates

Lysates/proteins at 20 µg per lane.

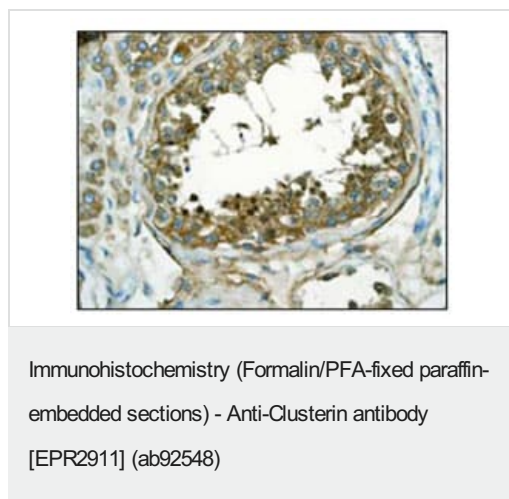
Secondary

All lanes : Goat Anti-Rabbit IgG (HRP) with minimal cross-reactivity with human IgG at 1/2000 dilution

Predicted band size: 52 kDa

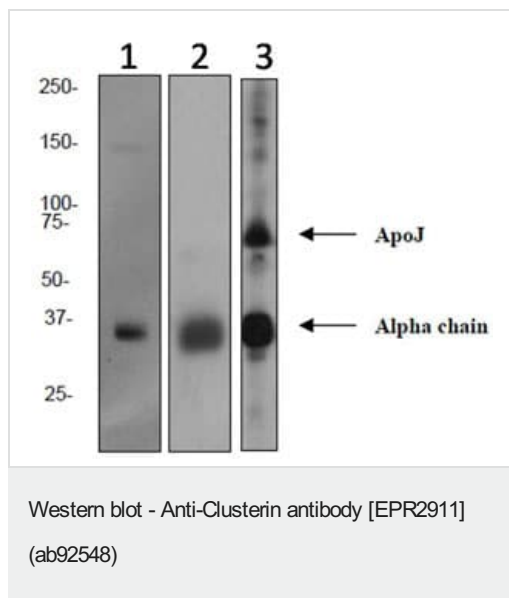
Observed band size: 37,68 kDa

Clusterin precursor could be cleaved to produce an N-terminal $\hat{\text{I}}$ -chain and a C-terminal $\hat{\text{P}}$ -chain as was described by PMID: 25402950. ab92548 recognizes α -chain.



ab92548 (unpurified) at 1/100 dilution staining Apolipoprotein J in Human testis tissue by Immunohistochemistry Formalin-fixed, Paraffin-embedded tissue.

Heat mediated antigen retrieval was performed before commencing with IHC staining protocol.



All lanes : Anti-Clusterin antibody [EPR2911] (ab92548) at 1/1000 dilution (unpurified)

Lane 1 : Human tonsil tissue lysate

Lane 2 : Fetal brain tissue lysate

Lane 3 : Human Plasma lysate

Lysates/proteins at 10 µg per lane.

Secondary

All lanes : HRP labelled goat anti-rabbit at 1/2000 dilution

Predicted band size: 52 kDa

Why choose a recombinant antibody?

Research with confidence
Consistent and reproducible results

Long-term and scalable supply
Recombinant technology

Success from the first experiment
Confirmed specificity

Ethical standards compliant
Animal-free production

Anti-Clusterin antibody [EPR2911] (ab92548)

Please note: All products are "FOR RESEARCH USE ONLY. NOT FOR USE IN DIAGNOSTIC PROCEDURES"

Our Abpromise to you: Quality guaranteed and expert technical support

- Replacement or refund for products not performing as stated on the datasheet
- Valid for 12 months from date of delivery
- Response to your inquiry within 24 hours
- We provide support in Chinese, English, French, German, Japanese and Spanish
- Extensive multi-media technical resources to help you

- We investigate all quality concerns to ensure our products perform to the highest standards

If the product does not perform as described on this datasheet, we will offer a refund or replacement. For full details of the Abpromise, please visit <https://www.abcam.co.jp/abpromise> or contact our technical team.

Terms and conditions

- Guarantee only valid for products bought direct from Abcam or one of our authorized distributors