

Anti-CLPTM1 antibody [EPR8800] ab133756

KO 評価済 リコンビナント RabMAb

画像数 7

製品の概要

製品名	Anti-CLPTM1 antibody [EPR8800]
製品の詳細	Rabbit monoclonal [EPR8800] to CLPTM1
由来種	Rabbit
アプリケーション	適用あり: WB, IHC-P, ICC/IF, Flow Cyt (Intra) 適用なし: IP
種交差性	交差種: Human
免疫原	Synthetic peptide within Human CLPTM1 aa 1-100 (N terminal). The exact sequence is proprietary. Database link: O96005
ポジティブ・コントロール	WB: A549, HAP1, HeLa, 293T, U87 MG, HepG2 and Jurkat cell lysate, IHC: Papillary adenocarcinoma of Human thyroid gland tissue. ICC/IF: HeLa cells Flow Cyt: A549 cells
特記事項	This product is a recombinant monoclonal antibody, which offers several advantages including: <ul style="list-style-type: none"> - High batch-to-batch consistency and reproducibility - Improved sensitivity and specificity - Long-term security of supply - Animal-free production For more information see here . Our RabMAb [®] technology is a patented hybridoma-based technology for making rabbit monoclonal antibodies. For details on our patents, please refer to RabMAb[®] patents . Mouse, Rat: We have preliminary internal testing data to indicate this antibody may not react with these species. Please contact us for more information.

製品の特性

製品の状態	Liquid
保存方法	Shipped at 4°C. Store at -20°C. Stable for 12 months at -20°C.
解離定数 (K _D 値)	K _D = 3.45 x 10 ⁻¹¹ M





[Learn more about K_D](#)

バッファー	pH: 7.20 Preservative: 0.01% Sodium azide Constituents: 9% PBS, 40% Glycerol (glycerin, glycerine), 0.05% BSA, 50% Tissue culture supernatant
精製度	Protein A purified
ポリ/モノ	モノクローナル
クローン名	EPR8800
アイソタイプ	IgG

アプリケーション

The Abpromise guarantee **Abpromise保証は、次のテスト済みアプリケーションにおけるab133756の使用に適用されず**
アプリケーションノートには、推奨の開始希釈率がありますが、適切な希釈率につきましてはご検討ください。

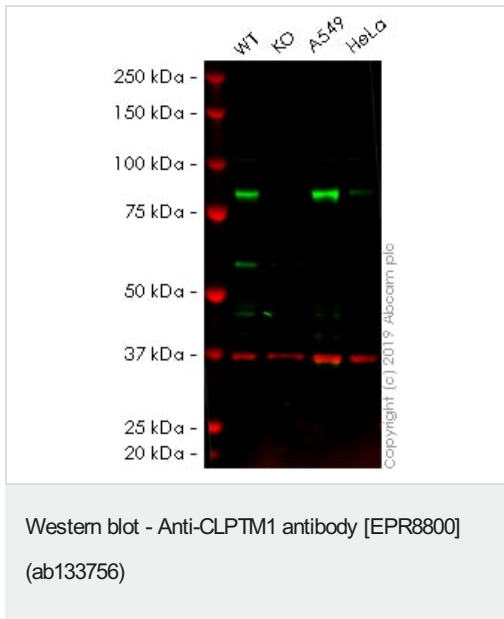
アプリケーション	Abreviews	特記事項
WB		1/1000 - 1/10000. Detects a band of approximately 90 kDa (predicted molecular weight: 76 kDa).
IHC-P		1/50 - 1/100. Perform heat mediated antigen retrieval with citrate buffer pH 6 before commencing with IHC staining protocol.
ICC/IF		1/250 - 1/500.
Flow Cyt (Intra)		1/200. ab172730 - Rabbit monoclonal IgG, is suitable for use as an isotype control with this antibody.

追加情報 Is unsuitable for IP.

ターゲット情報

機能	May play a role in T-cell development.
組織特異性	Widely expressed.
配列類似性	Belongs to the CLPTM1 family.
細胞内局在	Membrane.

画像



All lanes : Anti-CLPTM1 antibody [EPR8800] (ab133756) at 1/1000 dilution

Lane 1 : Wild-type HAP1 whole cell lysate

Lane 2 : CLPTM1 knockout HAP1 whole cell lysate

Lane 3 : A549 whole cell lysate

Lane 4 : HeLa whole cell lysate

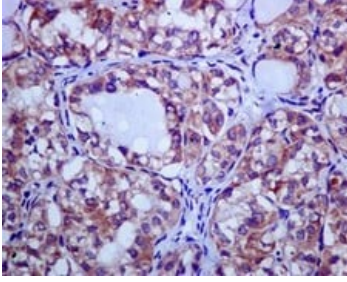
Lysates/proteins at 20 µg per lane.

Predicted band size: 76 kDa

Observed band size: 76 kDa

Lanes 1 - 4: Merged signal (red and green). Green - ab133756 observed at 76 kDa. Red - loading control, **ab8245**, observed at 37 kDa.

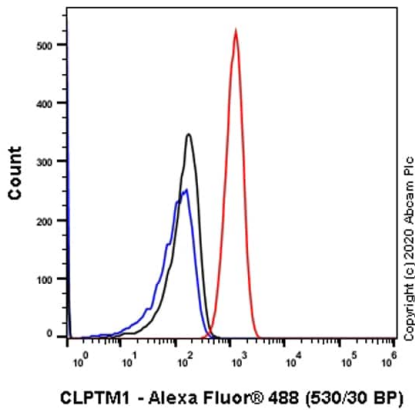
ab133756 was shown to recognize in wild-type HAP1 cells as signal was lost at the expected MW in CLPTM1 knockout cells. Additional cross-reactive bands were observed in the wild-type and knockout cells. Wild-type and CLPTM1 knockout samples were subjected to SDS-PAGE. The membrane was blocked with 3pc Milk. Ab133756 and **ab8245** (Mouse anti GAPDH loading control) were incubated overnight at 4°C at 1/1000 dilution and 1/20000 dilution respectively. Blots were developed with Goat anti-Rabbit IgG H&L (IRDye® 800CW) preabsorbed **ab216773** and Goat anti-Mouse IgG H&L (IRDye® 680RD) preabsorbed **ab216776** secondary antibodies at 1/20000 dilution for 1 hour at room temperature before imaging.



Immunohistochemistry (Formalin/PFA-fixed paraffin-embedded sections) - Anti-CLPTM1 antibody [EPR8800] (ab133756)

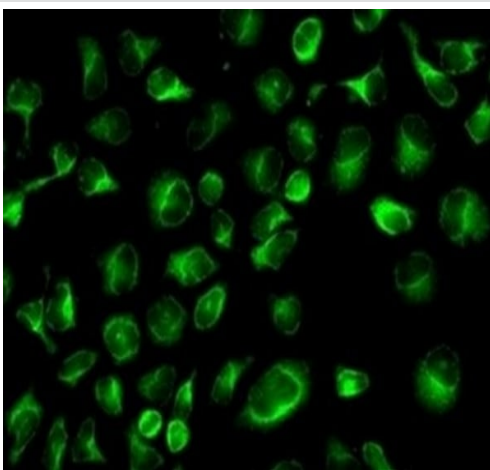
Immunohistochemical analysis of paraffin embedded papillary adenocarcinoma of Human thyroid gland tissue labelling CLPTM1 with ab133756 at 1/50.

Perform heat mediated antigen retrieval with citrate buffer pH 6 before commencing with IHC staining protocol.



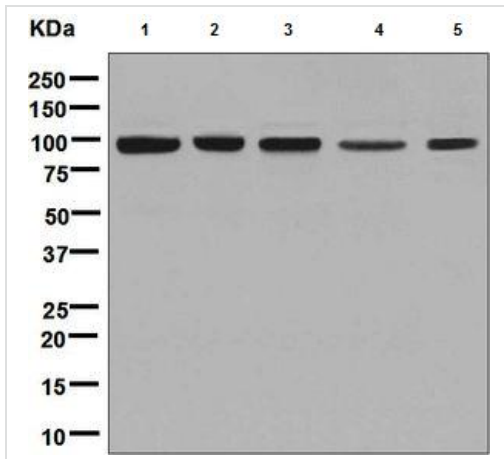
Flow Cytometry (Intracellular) - Anti-CLPTM1 antibody [EPR8800] (ab133756)

Flow Cytometry analysis of A549 (Human lung carcinoma epithelial cell) cells labeling CLPTM1 with purified ab133756 at 1/200 dilution (1 µg/mL) (Red). Cells were fixed with 4% Paraformaldehyde and permeabilised with 90% Methanol. A Goat anti rabbit IgG (Alexa Fluor® 488, **ab150077**) secondary antibody was used at 1/2000. Isotype control - Rabbit monoclonal IgG (Black). Unlabeled control - Cell without incubation with primary antibody and secondary antibody (Blue).



Immunocytochemistry/ Immunofluorescence - Anti-CLPTM1 antibody [EPR8800] (ab133756)

Immunofluorescent staining of HeLa cells labelling CLPTM1 with ab133756 at 1/250.



Western blot - Anti-CLPTM1 antibody [EPR8800] (ab133756)

All lanes : Anti-CLPTM1 antibody [EPR8800] (ab133756) at 1/1000 dilution

Lane 1 : HeLa cell lysate

Lane 2 : 293T cell lysate

Lane 3 : U87 MG cell lysate

Lane 4 : HepG2 cell lysate

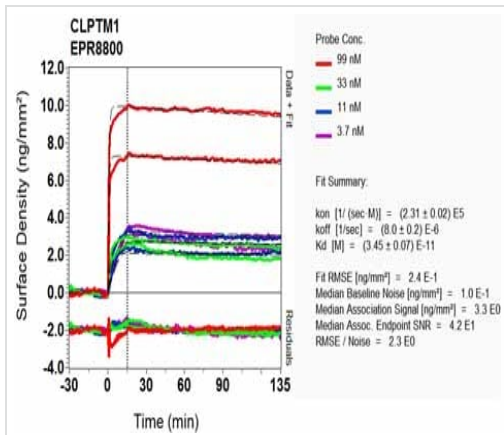
Lane 5 : Jurkat cell lysate

Lysates/proteins at 10 µg per lane.

Secondary

All lanes : Goat anti-rabbit HRP conjugated antibody at 1/2000 dilution

Predicted band size: 76 kDa







SPR Scanning - Anti-CLPTM1 antibody [EPR8800] (ab133756)

Equilibrium dissociation constant (K_D)

Learn more about K_D

[Click here to learn more about \$K_D\$](#)

Why choose a recombinant antibody?

 <p>Research with confidence Consistent and reproducible results</p>	 <p>Long-term and scalable supply Recombinant technology</p>
 <p>Success from the first experiment Confirmed specificity</p>	 <p>Ethical standards compliant Animal-free production</p>

Anti-CLPTM1 antibody [EPR8800] (ab133756)

Please note: All products are "FOR RESEARCH USE ONLY. NOT FOR USE IN DIAGNOSTIC PROCEDURES"

Our Abpromise to you: Quality guaranteed and expert technical support

- Replacement or refund for products not performing as stated on the datasheet
- Valid for 12 months from date of delivery
- Response to your inquiry within 24 hours
- We provide support in Chinese, English, French, German, Japanese and Spanish
- Extensive multi-media technical resources to help you
- We investigate all quality concerns to ensure our products perform to the highest standards

If the product does not perform as described on this datasheet, we will offer a refund or replacement. For full details of the Abpromise, please visit <https://www.abcam.co.jp/abpromise> or contact our technical team.

Terms and conditions

- Guarantee only valid for products bought direct from Abcam or one of our authorized distributors