



Anti-CLLD8/SETDB2 antibody ab13712

2 References **画像数 1**

製品の概要

製品名	Anti-CLLD8/SETDB2 antibody
製品の詳細	Goat polyclonal to CLLD8/SETDB2
由来種	Goat
特異性	This antibody has been shown to detect SETDB2 in overexpression cell extracts.
アプリケーション	適用あり: WB
種交差性	交差種: Human 交差が予測される動物種: Mouse, Rat, Cow, Dog, Pig 
免疫原	Synthetic peptide corresponding to Human CLLD8/SETDB2 aa 1-100 (N terminal). (NP_114121.2; NP_001153780.1) Database link: Q96T68 <div>  Run BLAST with  Run BLAST with </div>
ポジティブ・コントロール	WB: HeLa nuclear lysate.
特記事項	<p>The Life Science industry has been in the grips of a reproducibility crisis for a number of years. Abcam is leading the way in addressing this with our range of recombinant monoclonal antibodies and knockout edited cell lines for gold-standard validation. Please check that this product meets your needs before purchasing.</p> <p>If you have any questions, special requirements or concerns, please send us an inquiry and/or contact our Support team ahead of purchase. Recommended alternatives for this product can be found below, along with publications, customer reviews and Q&As</p>

製品の特性

製品の状態	Liquid
保存方法	Shipped at 4°C. Upon delivery aliquot and store at -20°C. Avoid freeze / thaw cycles.
バッファー	pH: 7.3 Preservative: 0.02% Sodium azide Constituents: 99% Tris buffered saline, 0.5% BSA
精製度	Immunogen affinity purified
特記事項 (精製)	Purified from goat serum by ammonium sulphate precipitation followed by antigen affinity chromatography using the immunizing peptide.

ポリ/モノ
アイソタイプ

ポリクローナル
IgG

アプリケーション

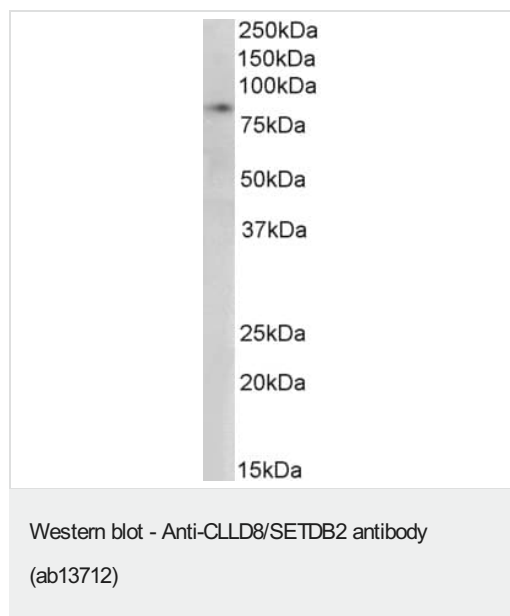
The Abpromise guarantee **Abpromise保証は、** 次のテスト済みアプリケーションにおけるab13712の使用に適用されます
アプリケーションノートには、推奨の開始希釈率がありますが、適切な希釈率につきましてはご検討ください。

アプリケーション	Abreviews	特記事項
WB		Use a concentration of 0.3 - 1 µg/ml. Detects a band of approximately 80 kDa (predicted molecular weight: 83 kDa). 1 hour primary incubation is recommended for this product.

ターゲット情報

機能	Histone methyltransferase involved in left-right axis specification in early development and mitosis. Specifically trimethylates 'Lys-9' of histone H3 (H3K9me3). H3K9me3 is a specific tag for epigenetic transcriptional repression that recruits HP1 (CBX1, CBX3 and/or CBX5) proteins to methylated histones. Contributes to H3K9me3 in both the interspersed repetitive elements and centromere-associated repeats. Plays a role in chromosome condensation and segregation during mitosis.
組織特異性	Ubiquitous. Highest expression in heart, testis and ovary.
配列類似性	Belongs to the histone-lysine methyltransferase family. Contains 1 MBD (methyl-CpG-binding) domain. Contains 1 pre-SET domain. Contains 1 SET domain.
細胞内局在	Nucleus. Chromosome.

画像



Anti-CLLD8/SETDB2 antibody (ab13712) at 0.3 µg/ml + HeLa (Human epithelial cell line from cervix adenocarcinoma) nuclear lysate at 35 µg

Predicted band size: 83 kDa

Detected by chemiluminescence.

RIPA buffer.

Please note: All products are "FOR RESEARCH USE ONLY. NOT FOR USE IN DIAGNOSTIC PROCEDURES"

Our Abpromise to you: Quality guaranteed and expert technical support

- Replacement or refund for products not performing as stated on the datasheet
- Valid for 12 months from date of delivery
- Response to your inquiry within 24 hours
- We provide support in Chinese, English, French, German, Japanese and Spanish
- Extensive multi-media technical resources to help you
- We investigate all quality concerns to ensure our products perform to the highest standards

If the product does not perform as described on this datasheet, we will offer a refund or replacement. For full details of the Abpromise, please visit <https://www.abcam.co.jp/abpromise> or contact our technical team.

Terms and conditions

- Guarantee only valid for products bought direct from Abcam or one of our authorized distributors