


### Anti-CLIPR-59 antibody ab74239

★★★★☆ **5 Abreviews**   **2 References**   画像数 **2**

#### 製品の概要

製品名	Anti-CLIPR-59 antibody
製品の詳細	Rabbit polyclonal to CLIPR-59
由来種	Rabbit
アプリケーション	<b>適用あり:</b> WB, ICC/IF
種交差性	<b>交差種:</b> Human <b>交差が予測される動物種:</b> Mouse 
免疫原	Synthetic peptide corresponding to Human CLIPR-59 (internal sequence).
ポジティブ・コントロール	A549 cells and extracts from A549 cells.
特記事項	<p>The Life Science industry has been in the grips of a reproducibility crisis for a number of years. Abcam is leading the way in addressing this with our range of recombinant monoclonal antibodies and knockout edited cell lines for gold-standard validation. Please check that this product meets your needs before purchasing.</p> <p>If you have any questions, special requirements or concerns, please send us an inquiry and/or contact our Support team ahead of purchase. Recommended alternatives for this product can be found below, along with publications, customer reviews and Q&amp;As</p>

#### 製品の特性

製品の状態	Liquid
保存方法	Shipped at 4°C. Upon delivery aliquot and store at -20°C. Avoid freeze / thaw cycles.
バッファー	<p>pH: 7.40</p> <p>Preservative: 0.02% Sodium azide</p> <p>Constituents: 50% Glycerol (glycerin, glycerine), 0.87% Sodium chloride, PBS</p>
精製度	Without Mg <sup>2+</sup> and Ca <sup>2+</sup>
ポリ/モノ	ポリクローナル
アイソタイプ	IgG

#### アプリケーション

## The Abpromise guarantee

**Abpromise保証は、次のテスト済みアプリケーションにおけるab74239の使用に適用されます**

アプリケーションノートには、推奨の開始希釈率がありますが、適切な希釈率につきましてはご検討ください。

アプリケーション	Abreviews	特記事項
WB	★★★★★ (2)	1/500 - 1/1000. Detects a band of approximately 60 kDa (predicted molecular weight: 60 kDa).
ICC/IF	★★★★★ (2)	1/500 - 1/1000.

## ターゲット情報

**機能** Functions as a cytoplasmic linker protein. Involved in TGN-endosome dynamics.

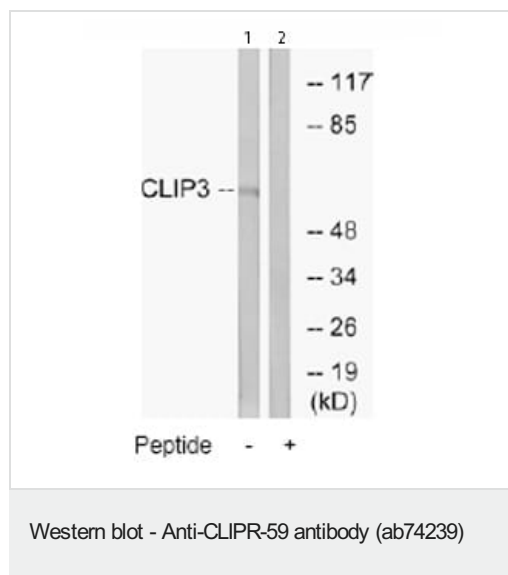
**配列類似性** Contains 3 ANK repeats.

Contains 2 CAP-Gly domains.

**ドメイン** Microtubule association is inhibited by the ANK repeats and the Golgi localization region (GoLD).

**細胞内局在** Cytoplasm. Golgi apparatus > Golgi stack. Localized to Golgi stacks as well as on tubulovesicular elements juxtaposed to Golgi cisternae.

## 画像



**All lanes :** Anti-CLIPR-59 antibody (ab74239) at 1/500 dilution

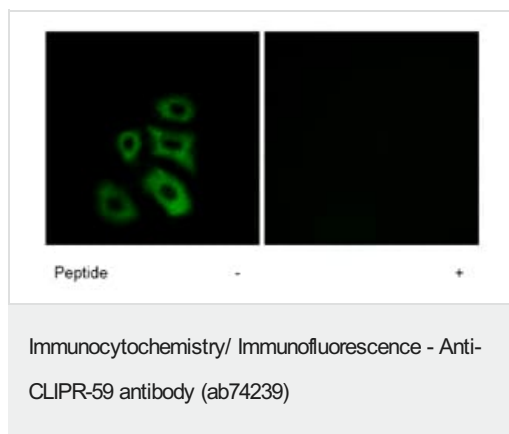
**Lane 1 :** Extracts from A549 cells

**Lane 2 :** Extracts from A549 cells plus 5µg immunizing peptide

Lysates/proteins at 5 µg per lane.

**Predicted band size:** 60 kDa

**Observed band size:** 60 kDa



Immunofluorescence analysis of A549 cells using ab74239 at a 1/500 dilution.

Left image un-treated.

Right image treated with immunizing peptide.

**Please note:** All products are "FOR RESEARCH USE ONLY. NOT FOR USE IN DIAGNOSTIC PROCEDURES"

### Our Abpromise to you: Quality guaranteed and expert technical support

---

- Replacement or refund for products not performing as stated on the datasheet
- Valid for 12 months from date of delivery
- Response to your inquiry within 24 hours
- We provide support in Chinese, English, French, German, Japanese and Spanish
- Extensive multi-media technical resources to help you
- We investigate all quality concerns to ensure our products perform to the highest standards

If the product does not perform as described on this datasheet, we will offer a refund or replacement. For full details of the Abpromise, please visit <https://www.abcam.co.jp/abpromise> or contact our technical team.

### Terms and conditions

---

- Guarantee only valid for products bought direct from Abcam or one of our authorized distributors