

Anti-CLEC-2 antibody [17D9] ab90542

1 References [画像数 1](#)

製品の概要

製品名	Anti-CLEC-2 antibody [17D9]
製品の詳細	Rat monoclonal [17D9] to CLEC-2
由来種	Rat
アプリケーション	適用あり: WB
種交差性	交差種: Mouse
免疫原	Tissue, cells or virus. This information is proprietary to Abcam and/or its suppliers.
特記事項	<p>The Life Science industry has been in the grips of a reproducibility crisis for a number of years. Abcam is leading the way in addressing this with our range of recombinant monoclonal antibodies and knockout edited cell lines for gold-standard validation. Please check that this product meets your needs before purchasing.</p> <p>If you have any questions, special requirements or concerns, please send us an inquiry and/or contact our Support team ahead of purchase. Recommended alternatives for this product can be found below, along with publications, customer reviews and Q&As</p>

製品の特性

製品の状態	Liquid
保存方法	Shipped at 4°C. Upon delivery aliquot and store at -20°C. Avoid repeated freeze / thaw cycles.
バッファー	Preservative: 0.02% Sodium azide Constituent: 99.98% PBS
精製度	Protein A/G purified
ポリ/モノ	モノクローナル
クローン名	17D9
ミエローマ	Y3/Ag1.2.3
アイソタイプ	IgG2b

アプリケーション

The Abpromise guarantee

Abpromise保証は、次のテスト済みアプリケーションにおけるab90542の使用に適用されます

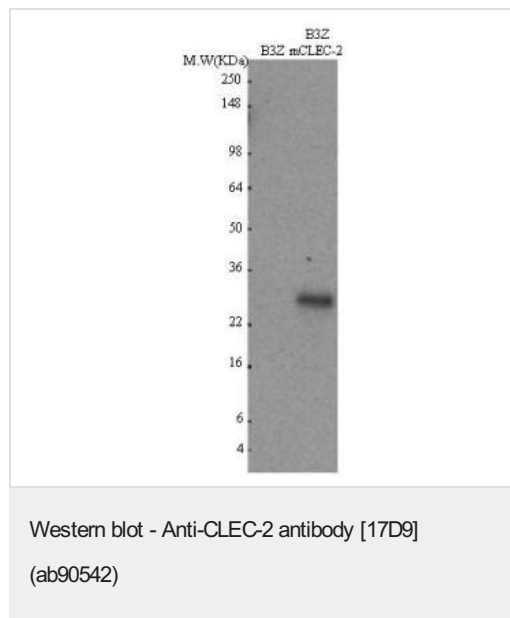
アプリケーションノートには、推奨の開始希釈率がありますが、適切な希釈率につきましてはご確認ください。

アプリケーション	Abreviews	特記事項
WB		Use at an assay dependent concentration. Predicted molecular weight: 20 kDa.

ターゲット情報

機能	Acts as a receptor for the platelet-aggregating snake venom protein rhodocytin. Rhodocytin binding leads to tyrosine phosphorylation and this promotes the binding of spleen tyrosine kinase (Syk) and initiation of downstream tyrosine phosphorylation events and activation of PLC-gamma-2. Acts as an attachment factor for human immunodeficiency virus type 1 (HIV-1) and facilitates its capture by platelets.
組織特異性	Expressed preferentially in the liver. Also expressed in immune cells of myeloid origin and on the surface of platelets.
配列類似性	Contains 1 C-type lectin domain.
翻訳後修飾	Glycosylated. Phosphorylated on tyrosine residue in response to rhodocytin binding.
細胞内局在	Membrane.

画像



All lanes : Anti-CLEC-2 antibody [17D9] (ab90542)

Lane 1 : B3Z

Lane 2 : B3Z mCLEC-2

Predicted band size: 20 kDa

Observed band size: 25 kDa

Please note: All products are "FOR RESEARCH USE ONLY. NOT FOR USE IN DIAGNOSTIC PROCEDURES"

Our Abpromise to you: Quality guaranteed and expert technical support

- Replacement or refund for products not performing as stated on the datasheet

- Valid for 12 months from date of delivery
- Response to your inquiry within 24 hours
- We provide support in Chinese, English, French, German, Japanese and Spanish
- Extensive multi-media technical resources to help you
- We investigate all quality concerns to ensure our products perform to the highest standards

If the product does not perform as described on this datasheet, we will offer a refund or replacement. For full details of the Abpromise, please visit <https://www.abcam.co.jp/abpromise> or contact our technical team.

Terms and conditions

- Guarantee only valid for products bought direct from Abcam or one of our authorized distributors