


Anti-Claudin 4 antibody ab15104

★★★★☆ **5 Abreviews** **31 References** 画像数 4

製品の概要

| | |
|----------|---|
| 製品名 | Anti-Claudin 4 antibody |
| 製品の詳細 | Rabbit polyclonal to Claudin 4 |
| 由来種 | Rabbit |
| アプリケーション | 適用あり: WB, IHC-P |
| 種交差性 | 交差種: Human 交差が予測される動物種: Mouse, Pig  |
| 免疫原 | Synthetic peptide within Human Claudin 4 aa 150 to the C-terminus. The exact sequence is proprietary. Database link: O14493 |
| 特記事項 | <p>This product is FOR RESEARCH USE ONLY. For commercial use, please contact partnerships@abcam.com.</p> <p>The Life Science industry has been in the grips of a reproducibility crisis for a number of years. Abcam is leading the way in addressing this with our range of recombinant monoclonal antibodies and knockout edited cell lines for gold-standard validation. Please check that this product meets your needs before purchasing.</p> <p>If you have any questions, special requirements or concerns, please send us an inquiry and/or contact our Support team ahead of purchase. Recommended alternatives for this product can be found below, along with publications, customer reviews and Q&As</p> |

製品の特性

| | |
|--------|--|
| 製品の状態 | Liquid |
| 保存方法 | Shipped at 4°C. Store at +4°C short term (1-2 weeks). Upon delivery aliquot. Store at -20°C or -80°C. Avoid freeze / thaw cycle. |
| バッファー | pH: 7.60 Preservative: 0.1% Sodium azide Constituents: PBS, 1% BSA |
| 精製度 | Immunogen affinity purified |
| ポリ/モノ | ポリクローナル |
| アイソタイプ | IgG |

アプリケーション

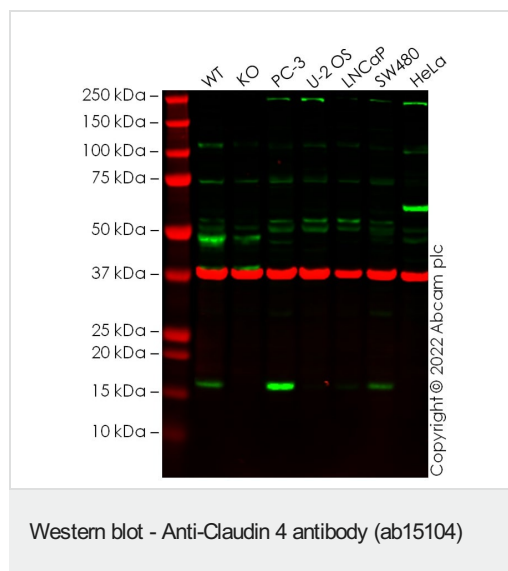
The Abpromise guarantee **Abpromise保証は、** 次のテスト済みアプリケーションにおけるab15104の使用に適用されます
アプリケーションノートには、推奨の開始希釈率がありますが、適切な希釈率につきましてはご検討ください。

| アプリケーション | Abreviews | 特記事項 |
|----------|-----------|--|
| WB | ★★★★★ (2) | Use a concentration of 1 µg/ml. Detects a band of approximately 20 kDa (predicted molecular weight: 22 kDa). |
| IHC-P | ★★★★★ (2) | 1/200. Perform heat mediated antigen retrieval before commencing with IHC staining protocol. |

ターゲット情報

| | |
|-------|---|
| 機能 | Plays a major role in tight junction-specific obliteration of the intercellular space. |
| 関連疾患 | Note=CLDN4 is located in the Williams-Beuren syndrome (WBS) critical region. WBS results from a hemizygous deletion of several genes on chromosome 7q11.23, thought to arise as a consequence of unequal crossing over between highly homologous low-copy repeat sequences flanking the deleted region. |
| 配列類似性 | Belongs to the claudin family. |
| 細胞内局在 | Cell junction > tight junction. Cell membrane. |

画像



All lanes : Anti-Claudin 4 antibody (ab15104) at 1 µg/ml

Lane 1 : Wild-type MCF7 cell lysate

Lane 2 : CLDN4 knockout MCF7 cell lysate

Lane 3 : PC-3 cell lysate

Lane 4 : U-2 OS cell lysate

Lane 5 : LNCaP cell lysate

Lane 6 : SW480 cell lysate

Lane 7 : HeLa cell lysate

Lysates/proteins at 20 µg per lane.

Secondary

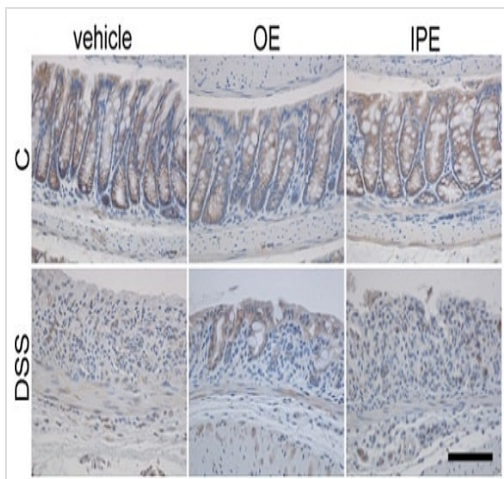
All lanes : Goat anti-Rabbit IgG H&L 800CW and Goat anti-Mouse IgG H&L 680RD at 1/20000 dilution

Performed under reducing conditions.

Predicted band size: 22 kDa

Observed band size: 17 kDa

False colour image of Western blot: Anti-Claudin 4 antibody staining at 1 ug/ml, shown in green; Mouse anti-GAPDH antibody [6C5] ([ab8245](#)) loading control staining at 1/20000 dilution, shown in red. In Western blot, ab15104 was shown to bind specifically to Claudin 4. A band was observed at 17 kDa in wild-type MCF7 cell lysates with no signal observed at this size in CLDN4 knockout cell line [ab274946](#) (knockout cell lysate [ab275004](#)). To generate this image, wild-type and CLDN4 knockout MCF7 cell lysates were analysed. First, samples were run on an SDS-PAGE gel then transferred onto a nitrocellulose membrane. Membranes were blocked in fluorescent western blot (TBS-based) blocking solution before incubation with primary antibodies overnight at 4 °C. Blots were washed four times in TBS-T, incubated with secondary antibodies for 1 h at room temperature, washed again four times then imaged. Secondary antibodies used were Goat anti-Rabbit IgG H&L 800CW and Goat anti-Mouse IgG H&L 680RD at 1/20000 dilution.



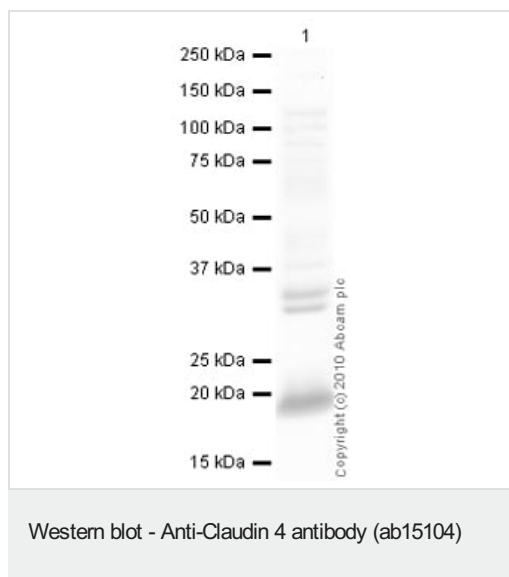
Immunohistochemistry (Formalin/PFA-fixed paraffin-embedded sections) - Anti-Claudin 4 antibody (ab15104)

Lean QY et al. PLoS One (2015) Reproduced under the Creative Commons license
<http://creativecommons.org/licenses/by/4.0/>

Immunohistochemical analysis of healthy and colitis mouse colon sections (untreated and treated with enoxaparin) labeling claudin-4 with ab15104 at 1/200. [ab7090](#), anti-rabbit immunoglobulin G conjugated to horseradish peroxidase (HRP) at 1/300 was used as the secondary antibody. [ab64238](#) at 1/50 was used to develop the histological signal.

Antigen retrieval was performed by incubating the sections for 10 minutes at 97°C in 1 mM EDTA buffer, pH 8.0 or 10 mM citrate buffer, pH 6.0.

Control, C; untreated colitis, DSS; oral enoxaparin, OE; intraperitoneal injection of enoxaparin, IPE.



Anti-Claudin 4 antibody (ab15104) at 1 µg/ml + SHSY-5Y (Human neuroblastoma cell line) Whole Cell Lysate at 10 µg

Secondary

Goat Anti-Rabbit IgG H&L (HRP) preadsorbed ([ab97080](#)) at 1/5000 dilution

Developed using the ECL technique.

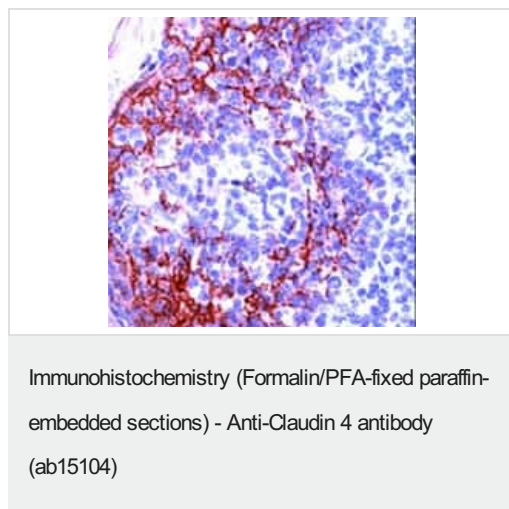
Performed under reducing conditions.

Predicted band size: 22 kDa

Observed band size: 20 kDa

Additional bands at: 125 kDa, 34 kDa, 35 kDa. We are unsure as to the identity of these extra bands.

Exposure time: 30 seconds



Formalin fixed paraffin embedded human tonsil stained with ab15104 (1/200, 10 min at room temperature).

Please note: All products are "FOR RESEARCH USE ONLY. NOT FOR USE IN DIAGNOSTIC PROCEDURES"

Our Abpromise to you: Quality guaranteed and expert technical support

- Replacement or refund for products not performing as stated on the datasheet
- Valid for 12 months from date of delivery
- Response to your inquiry within 24 hours

- We provide support in Chinese, English, French, German, Japanese and Spanish
- Extensive multi-media technical resources to help you
- We investigate all quality concerns to ensure our products perform to the highest standards

If the product does not perform as described on this datasheet, we will offer a refund or replacement. For full details of the Abpromise, please visit <https://www.abcam.co.jp/abpromise> or contact our technical team.

Terms and conditions

- Guarantee only valid for products bought direct from Abcam or one of our authorized distributors