


Anti-Claudin 2 antibody ab53032

★★★★★ [2 Abreviews](#) [54 References](#) [画像数 2](#)

製品の概要

製品名	Anti-Claudin 2 antibody
製品の詳細	Rabbit polyclonal to Claudin 2
由来種	Rabbit
アプリケーション	適用あり: ICC/IF, ELISA, IHC-P, WB
種交差性	交差種: Mouse, Human 交差が予測される動物種: Rat 
免疫原	A synthetic peptide derived from human Claudin 2.
特記事項	<p>The Life Science industry has been in the grips of a reproducibility crisis for a number of years. Abcam is leading the way in addressing this with our range of recombinant monoclonal antibodies and knockout edited cell lines for gold-standard validation. Please check that this product meets your needs before purchasing.</p> <p>If you have any questions, special requirements or concerns, please send us an inquiry and/or contact our Support team ahead of purchase. Recommended alternatives for this product can be found below, along with publications, customer reviews and Q&As</p>

製品の特性

製品の状態	Liquid
保存方法	Shipped at 4°C. Store at -20°C. Stable for 12 months at -20°C.
バッファー	pH: 7 Preservative: 0.02% Sodium azide Constituents: 50% Glycerol, 0.87% Sodium chloride, PBS Without Mg+2 and Ca+2
精製度	Immunogen affinity purified
特記事項(精製)	ab53032 was affinity-purified from rabbit antiserum by affinity-chromatography using epitope-specific immunogen.
ポリ/モノ	ポリクローナル
アイソタイプ	IgG

アプリケーション

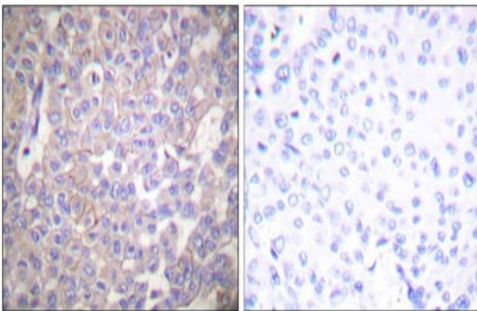
The Abpromise guarantee Abpromise保証は、次のテスト済みアプリケーションにおけるab53032の使用に適用されます
アプリケーションノートには、推奨の開始希釈率がありますが、適切な希釈率につきましてはご検討ください。

アプリケーション	Abreviews	特記事項
ICC/IF	★★★★★ (1)	Use at an assay dependent concentration.
ELISA		Use at an assay dependent concentration.
IHC-P	★★★★★ (1)	Use at an assay dependent concentration.
WB		1/500 - 1/1000. Detects a band of approximately 25 kDa (predicted molecular weight: 25 kDa).

ターゲット情報

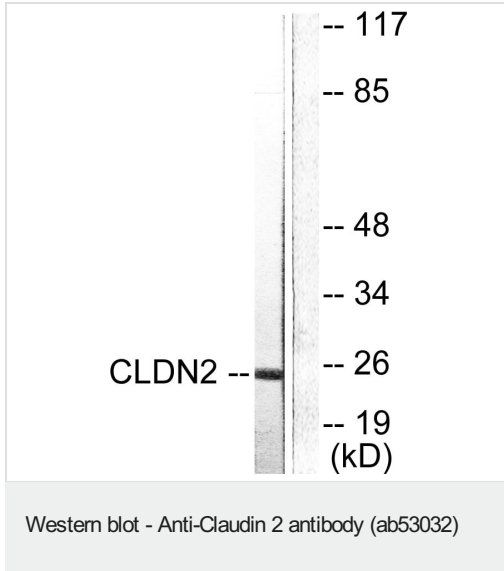
機能	Plays a major role in tight junction-specific obliteration of the intercellular space, through calcium-independent cell-adhesion activity.
配列類似性	Belongs to the claudin family.
細胞内局在	Cell junction > tight junction. Cell membrane.

画像



Immunohistochemistry analysis of paraffin-embedded human breast carcinoma tissue, using ab53032. The picture on the right is blocked with the synthesized peptide.

Immunohistochemistry (Formalin/PFA-fixed paraffin-embedded sections) - Anti-Claudin 2 antibody (ab53032)



All lanes : Anti-Claudin 2 antibody (ab53032)

Lane 1 : NIH/3T3 cells

Lane 2 : NIH/3T3 cells with blocking peptide

Predicted band size: 25 kDa

Please note: All products are "FOR RESEARCH USE ONLY. NOT FOR USE IN DIAGNOSTIC PROCEDURES"

Our Abpromise to you: Quality guaranteed and expert technical support

- Replacement or refund for products not performing as stated on the datasheet
- Valid for 12 months from date of delivery
- Response to your inquiry within 24 hours
- We provide support in Chinese, English, French, German, Japanese and Spanish
- Extensive multi-media technical resources to help you
- We investigate all quality concerns to ensure our products perform to the highest standards

If the product does not perform as described on this datasheet, we will offer a refund or replacement. For full details of the Abpromise, please visit <https://www.abcam.co.jp/abpromise> or contact our technical team.

Terms and conditions

- Guarantee only valid for products bought direct from Abcam or one of our authorized distributors