

### Anti-Clathrin heavy chain antibody [X22] ab2731

★★★★★ [19 Abreviews](#) [80 References](#) [画像数 8](#)

#### 製品の概要

製品名	Anti-Clathrin heavy chain antibody [X22]
製品の詳細	Mouse monoclonal [X22] to Clathrin heavy chain
由来種	Mouse
アプリケーション	<b>適用あり:</b> WB, IHC-P, ICC/IF
種交差性	<b>交差種:</b> Human, Xenopus laevis
免疫原	Full length native protein (purified) corresponding to Human Clathrin heavy chain. Purified human brain clathrin heavy chain.
エピトープ	Electron microscopy and proteolysis mapping demonstrate that binding occurs towards the central hub of the triskelion, N-terminal to the light chain binding regions.
特記事項	<p>The Life Science industry has been in the grips of a reproducibility crisis for a number of years. Abcam is leading the way in addressing this with our range of recombinant monoclonal antibodies and knockout edited cell lines for gold-standard validation. Please check that this product meets your needs before purchasing.</p> <p>If you have any questions, special requirements or concerns, please send us an inquiry and/or contact our Support team ahead of purchase. Recommended alternatives for this product can be found below, along with publications, customer reviews and Q&amp;As</p>

#### 製品の特性

製品の状態	Liquid
保存方法	Shipped at 4°C. Store at +4°C short term (1-2 weeks). Upon delivery aliquot. Store at -20°C or -80°C. Avoid freeze / thaw cycle.
バッファー	Preservative: 0.05% Sodium azide Constituent: PBS
精製度	Protein A purified
ポリ/モノ	モノクローナル
クローン名	X22
アイソタイプ	IgG1

#### アプリケーション

## The Abpromise guarantee

**Abpromise保証は、次のテスト済みアプリケーションにおけるab2731の使用に適用されます**

アプリケーションノートには、推奨の開始希釈率がありますが、適切な希釈率につきましてはご検討ください。

アプリケーション	Abreviews	特記事項
WB	★★★★☆ (5)	1/100 - 1/500. Detects a band of approximately 180 kDa.
IHC-P		1/100.
ICC/IF	★★★★★ (11)	1/1000.

## ターゲット情報

### 機能

Clathrin is the major protein of the polyhedral coat of coated pits and vesicles. Two different adapter protein complexes link the clathrin lattice either to the plasma membrane or to the trans-Golgi network.

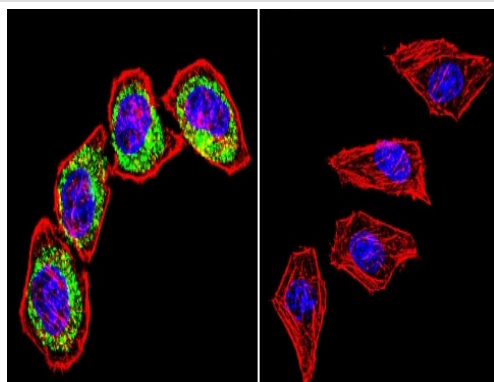
### 配列類似性

Belongs to the clathrin heavy chain family.

### 細胞内局在

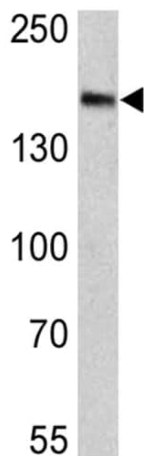
Cytoplasmic vesicle membrane. Membrane > coated pit. Melanosome. Cytoplasmic face of coated pits and vesicles. Identified by mass spectrometry in melanosome fractions from stage I to stage IV.

## 画像



Immunocytochemistry/ Immunofluorescence - Anti-Clathrin heavy chain antibody [X22] (ab2731)

Immunocytochemistry/Immunofluorescence analysis of Clathrin heavy chain shows staining in HeLa cells. Clathrin, Heavy chain staining (green), F-Actin staining with Phalloidin (red) and nuclei with DAPI (blue) is shown. Cells were grown on chamber slides and fixed with formaldehyde prior to staining. Cells were probed without (control) or with ab2731 (1:200) over night at 4°C, washed with PBS and incubated with a DyLight-488 conjugated goat anti-mouse secondary antibody. Images were taken at 60X magnification.



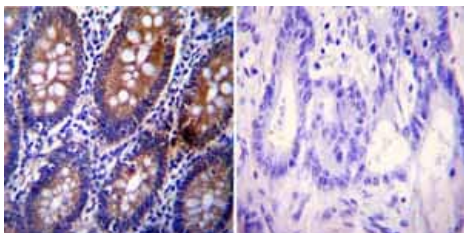
Western blot - Anti-Clathrin heavy chain antibody [X22] (ab2731)

Anti-Clathrin heavy chain antibody [X22] (ab2731) at 1/300 dilution  
+ Human brain lysates at 25 µg

### Secondary

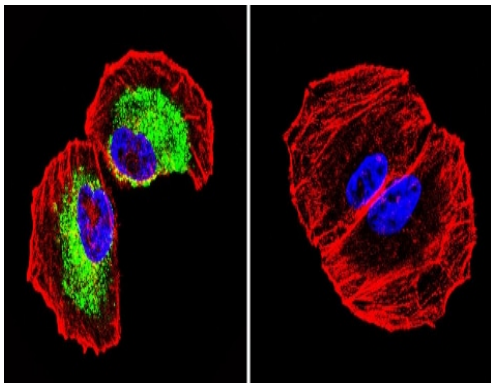
HRP-conjugated goat anti-mouse IgG + IgM (H+L)

Developed using the ECL technique.



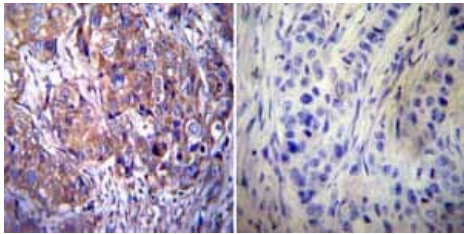
Immunohistochemistry (Formalin/PFA-fixed paraffin-embedded sections) - Anti-Clathrin heavy chain antibody [X22] (ab2731)

Immunohistochemistry was performed on normal biopsies of deparaffinized Human colon tissue. To expose target proteins heat induced antigen retrieval was performed using 10mM sodium citrate (pH6.0) buffer microwaved for 8-15 minutes. Following antigen retrieval tissues were blocked in 3% BSA-PBS for 30 minutes at room temperature. Tissues were then probed at a dilution of 1:100 with a mouse monoclonal antibody recognizing Clathrin Heavy chain ab2731 or without primary antibody (negative control) overnight at 4°C in a humidified chamber. Tissues were washed extensively with PBST and endogenous peroxidase activity was quenched with a peroxidase suppressor. Detection was performed using a biotin-conjugated secondary antibody and SA-HRP followed by colorimetric detection using DAB. Tissues were counterstained with hematoxylin and prepped for mounting.



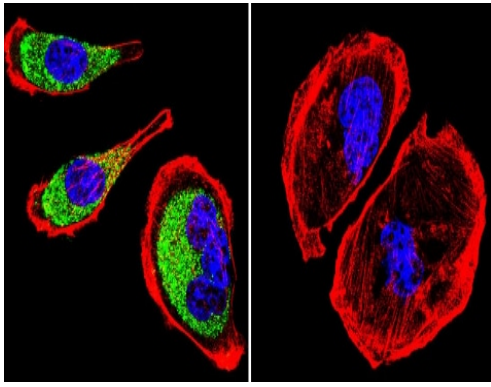
Immunocytochemistry/ Immunofluorescence - Anti-Clathrin heavy chain antibody [X22] (ab2731)

Immunocytochemistry/Immunofluorescence analysis of Clathrin heavy chain shows staining in NCI-H460 cells. Clathrin, Heavy chain staining (green), F-Actin staining with Phalloidin (red) and nuclei with DAPI (blue) is shown. Cells were grown on chamber slides and fixed with formaldehyde prior to staining. Cells were probed without (control) or with ab2731 (1:200) over night at 4°C, washed with PBS and incubated with a DyLight-488 conjugated goat anti-mouse secondary antibody. Images were taken at 60X magnification.

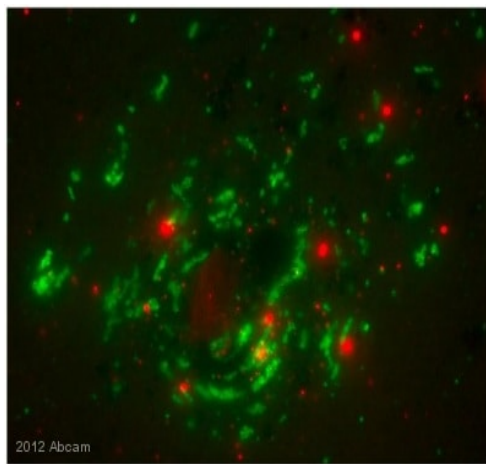


Immunohistochemistry (Formalin/PFA-fixed paraffin-embedded sections) - Anti-Clathrin heavy chain antibody [X22] (ab2731)

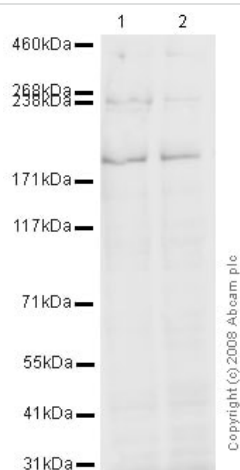
Immunohistochemistry was performed on cancer biopsies of deparaffinized Human breast carcinoma tissue. To expose target proteins heat induced antigen retrieval was performed using 10mM sodium citrate (pH6.0) buffer microwaved for 8-15 minutes. Following antigen retrieval tissues were blocked in 3% BSA-PBS for 30 minutes at room temperature. Tissues were then probed at a dilution of 1:100 with a mouse monoclonal antibody recognizing Clathrin Heavy chain ab2731 or without primary antibody (negative control) overnight at 4°C in a humidified chamber. Tissues were washed extensively with PBST and endogenous peroxidase activity was quenched with a peroxidase suppressor. Detection was performed using a biotin-conjugated secondary antibody and SA-HRP followed by colorimetric detection using DAB. Tissues were counterstained with hematoxylin and prepped for mounting.



Immunocytochemistry/ Immunofluorescence - Anti-Clathrin heavy chain antibody [X22] (ab2731)



Immunocytochemistry/ Immunofluorescence - Anti-Clathrin heavy chain antibody [X22] (ab2731)



Western blot - Anti-Clathrin heavy chain antibody [X22] (ab2731)

Immunocytochemistry/Immunofluorescence analysis of Clathrin heavy chain shows staining in U251 cells. Clathrin, Heavy chain staining (green), F-Actin staining with Phalloidin (red) and nuclei with DAPI (blue) is shown. Cells were grown on chamber slides and fixed with formaldehyde prior to staining. Cells were probed without (control) or with ab2731 (1:200) over night at 4°C, washed with PBS and incubated with a DyLight-488 conjugated goat anti-mouse secondary antibody. Images were taken at 60X magnification.

Xenopus laevis cytoplasmic egg extract visualized live with primary and secondary antibody addition [red is anti-Clathrin heavy chain X22 (ab2731) with goat anti-mouse Alexa Fluor 568 secondary, green is anti-HIP1R ([ab77297](#)) with goat anti-rabbit Alexa Fluor 488 secondary]. Large red structures are probably aggregates, but the small structures appear to be specific for vesicle staining.

**All lanes :** Anti-Clathrin heavy chain antibody [X22] (ab2731) at 1/500 dilution

**Lane 1 :** HepG2 (Human hepatocellular liver carcinoma cell line) Whole Cell Lysate

**Lane 2 :** Raji (Human Burkitt's lymphoma cell line) Whole Cell Lysate

Lysates/proteins at 10 µg per lane.

### Secondary

**All lanes :** Goat polyclonal to Mouse IgG - H&L - Pre-Adsorbed (HRP) at 1/3000 dilution

**Observed band size:** 180 kDa

**Additional bands at:** 240 kDa, 450 kDa. We are unsure as to the

identity of these extra bands.

**Please note:** All products are "FOR RESEARCH USE ONLY. NOT FOR USE IN DIAGNOSTIC PROCEDURES"

### **Our Abpromise to you: Quality guaranteed and expert technical support**

---

- Replacement or refund for products not performing as stated on the datasheet
- Valid for 12 months from date of delivery
- Response to your inquiry within 24 hours
- We provide support in Chinese, English, French, German, Japanese and Spanish
- Extensive multi-media technical resources to help you
- We investigate all quality concerns to ensure our products perform to the highest standards

If the product does not perform as described on this datasheet, we will offer a refund or replacement. For full details of the Abpromise, please visit <https://www.abcam.co.jp/abpromise> or contact our technical team.

### **Terms and conditions**

---

- Guarantee only valid for products bought direct from Abcam or one of our authorized distributors