


# Anti-CK1 epsilon antibody ab70110

**2 References**   [画像数 3](#)

### 製品の概要

製品名	Anti-CK1 epsilon antibody
製品の詳細	Rabbit polyclonal to CK1 epsilon
由来種	Rabbit
アプリケーション	<b>適用あり:</b> WB, IHC-P, ICC/IF
種交差性	<b>交差種:</b> Human <b>交差が予測される動物種:</b> Mouse 
免疫原	Synthetic peptide derived from an internal sequence of human CK1 epsilon
ポジティブ・コントロール	LOVO cell extracts, HeLa cells and human placenta tissue.
特記事項	<p>The Life Science industry has been in the grips of a reproducibility crisis for a number of years. Abcam is leading the way in addressing this with our range of recombinant monoclonal antibodies and knockout edited cell lines for gold-standard validation. Please check that this product meets your needs before purchasing.</p> <p>If you have any questions, special requirements or concerns, please send us an inquiry and/or contact our Support team ahead of purchase. Recommended alternatives for this product can be found below, along with publications, customer reviews and Q&amp;As</p>

### 製品の特性

製品の状態	Liquid
保存方法	Shipped at 4°C. Store at -20°C. Stable for 12 months at -20°C.
バッファー	<p>pH: 7.40</p> <p>Preservative: 0.02% Sodium azide</p> <p>Constituents: 50% Glycerol, 0.87% Sodium chloride, PBS</p>
精製度	Without Mg <sup>2+</sup> and Ca <sup>2+</sup>
特記事項 (精製)	Immunogen affinity purified
ポリ/モノ	ab70110 was affinity-purified from rabbit antiserum by affinity-chromatography using epitope-specific immunogen.
アイソタイプ	ポリクローナル
	IgG

## アプリケーション

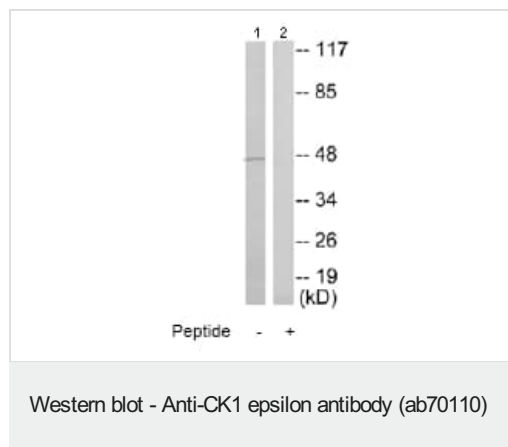
The Abpromise guarantee Abpromise保証は、次のテスト済みアプリケーションにおけるab70110の使用に適用されます  
アプリケーションノートには、推奨の開始希釈率がありますが、適切な希釈率につきましてはご検討ください。

アプリケーション	Abreviews	特記事項
WB		1/500 - 1/1000. Detects a band of approximately 48 kDa (predicted molecular weight: 48 kDa).
IHC-P		1/50 - 1/100.
ICC/IF		1/500 - 1/1000.

## ターゲット情報

機能	Casein kinases are operationally defined by their preferential utilization of acidic proteins such as caseins as substrates. Can phosphorylate a large number of proteins. Participates in Wnt signaling. Phosphorylates DVL1. Central component of the circadian clock. May act as a negative regulator of circadian rhythmicity by phosphorylating PER1 and PER2. Retains PER1 in the cytoplasm. Inhibits cytokine-induced granulocytic differentiation.
組織特異性	Expressed in all tissues examined, including brain, heart, lung, liver, pancreas, kidney, placenta and skeletal muscle. Expressed in monocytes and lymphocytes but not in granulocytes.
配列類似性	Belongs to the protein kinase superfamily. CK1 Ser/Thr protein kinase family. Casein kinase I subfamily. Contains 1 protein kinase domain.
翻訳後修飾	Autophosphorylated.
細胞内局在	Cytoplasm. Nucleus.

## 画像



**All lanes :** Anti-CK1 epsilon antibody (ab70110) at 1/500 dilution

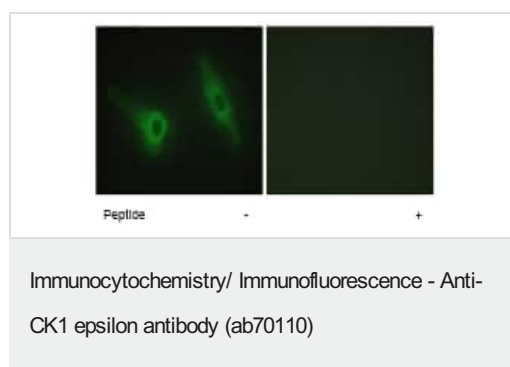
**Lane 1 :** LOVO cell extracts

**Lane 2 :** LOVO cell extracts with immunising peptide at 10 µg

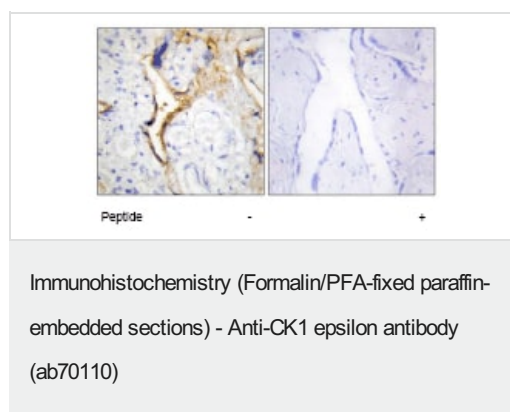
Lysates/proteins at 30 µg per lane.

**Predicted band size:** 48 kDa

**Observed band size:** 48 kDa



ab70110 at 1/500 dilution staining CK1 epsilon in HeLa cells by Immunofluorescence, in the absence or presence of the immunising peptide.



ab70110 at 1/50 dilution staining CK1 epsilon in human placenta by Immunohistochemistry, Paraffin-embedded tissue, in the absence or presence of the immunising peptide

**Please note:** All products are "FOR RESEARCH USE ONLY. NOT FOR USE IN DIAGNOSTIC PROCEDURES"

### Our Abpromise to you: Quality guaranteed and expert technical support

- Replacement or refund for products not performing as stated on the datasheet
- Valid for 12 months from date of delivery
- Response to your inquiry within 24 hours
- We provide support in Chinese, English, French, German, Japanese and Spanish
- Extensive multi-media technical resources to help you
- We investigate all quality concerns to ensure our products perform to the highest standards

If the product does not perform as described on this datasheet, we will offer a refund or replacement. For full details of the Abpromise, please visit <https://www.abcam.co.jp/abpromise> or contact our technical team.

### Terms and conditions

- Guarantee only valid for products bought direct from Abcam or one of our authorized distributors