


# Anti-Cip4 antibody ab72220

**1** [References](#) **2** [画像数](#)

### 製品の概要

製品名	Anti-Cip4 antibody
製品の詳細	Rabbit polyclonal to Cip4
由来種	Rabbit
アプリケーション	<b>適用あり:</b> WB, IP
種交差性	<b>交差種:</b> Mouse, Human <b>交差が予測される動物種:</b> Rat, Horse, Guinea pig, Dog, Pig, Chimpanzee, Rhesus monkey, Gorilla, Chinese hamster, Orangutan, Elephant 
免疫原	A region between residues 551 and 601 of human Cip4
ポジティブ・コントロール	HeLa cytoplasmic or membrane lysate 293T cytoplasmic or membrane lysate Mouse NIH3T3 cytoplasmic or membrane lysate
特記事項	<p>The Life Science industry has been in the grips of a reproducibility crisis for a number of years. Abcam is leading the way in addressing this with our range of recombinant monoclonal antibodies and knockout edited cell lines for gold-standard validation. Please check that this product meets your needs before purchasing.</p> <p>If you have any questions, special requirements or concerns, please send us an inquiry and/or contact our Support team ahead of purchase. Recommended alternatives for this product can be found below, along with publications, customer reviews and Q&amp;As</p>

### 製品の特性

製品の状態	Liquid
保存方法	Shipped at 4°C. Upon delivery aliquot and store at -20°C. Avoid freeze / thaw cycles.
バッファー	pH: 6.8 Preservative: 0.09% Sodium azide Constituents: 0.1% BSA, Tris buffered saline
精製度	Immunogen affinity purified
特記事項 (精製)	ab72220 was affinity purified using an epitope specific to Cip4 immobilized on solid support.
ポリ/モノ	ポリクローナル
アイソタイプ	IgG

## アプリケーション

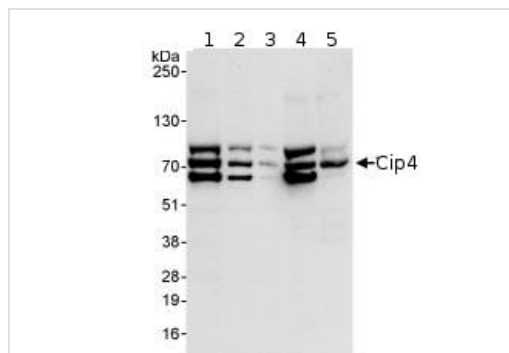
**The Abpromise guarantee**      **Abpromise保証は、** 次のテスト済みアプリケーションにおけるab72220の使用に適用されます  
アプリケーションノートには、推奨の開始希釈率がありますが、適切な希釈率につきましてはご検討ください。

アプリケーション	Abreviews	特記事項
WB		1/2000 - 1/10000. Detects a band of approximately 70 kDa (predicted molecular weight: 63 kDa).
IP		Use at 2-5 µg/mg of lysate.

## ターゲット情報

機能	Required for translocation of GLUT4 to the plasma membrane in response to insulin signaling (By similarity). Required to coordinate membrane tubulation with reorganization of the actin cytoskeleton during endocytosis. Binds to lipids such as phosphatidylinositol 4,5-bisphosphate and phosphatidylserine and promotes membrane invagination and the formation of tubules. Also promotes CDC42-induced actin polymerization by recruiting WASL/N-WASP which in turn activates the Arp2/3 complex. Actin polymerization may promote the fission of membrane tubules to form endocytic vesicles. Required for the formation of podosomes, actin-rich adhesion structures specific to monocyte-derived cells. May be required for the lysosomal retention of FASLG/FASL.
組織特異性	Expressed in brain, colon, heart, kidney, liver, lung, megakaryocyte, ovary, pancreas, peripheral blood lymphocytes, placenta, prostate, skeletal muscle, small intestine, spleen, testis, thymus and trachea.
配列類似性	Belongs to the FBNP1 family. Contains 1 FCH domain. Contains 1 REM (Hr1) repeat. Contains 1 SH3 domain.
翻訳後修飾	Tyrosine phosphorylated. Also phosphorylated by PKA.
細胞内局在	Cytoplasm > perinuclear region and Cytoplasm > cytoskeleton. Cytoplasm > cell cortex. Lysosome. Golgi apparatus. Cell membrane. Cell projection > phagocytic cup. Translocates to the plasma membrane in response to insulin stimulation, and this may require active RHOQ (By similarity). Localizes to cortical regions coincident with F-actin, to lysosomes and to sites of phagocytosis in macrophages. Also localizes to the Golgi, and this requires AKAP9.

## 画像



Western blot - Anti-Cip4 antibody (ab72220)

**All lanes :** Anti-Cip4 antibody (ab72220) at 0.04 µg/ml

**Lane 1 :** HeLa whole cell lysate at 50 µg

**Lane 2 :** HeLa whole cell lysate at 15 µg

**Lane 3 :** HeLa whole cell lysate at 5 µg

**Lane 4 :** 293T whole cell lysate at 50 µg

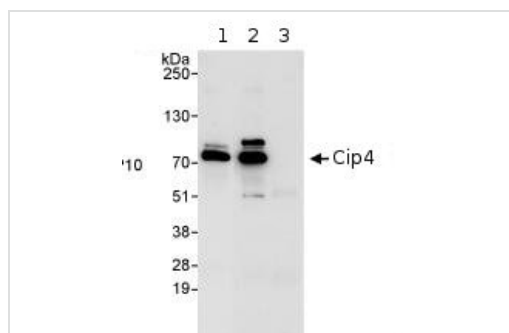
**Lane 5 :** Mouse NIH3T3 whole cell lysate at 50 µg

Developed using the ECL technique.

**Predicted band size:** 63 kDa

**Observed band size:** 70 kDa

**Exposure time:** 10 seconds



Immunoprecipitation - Cip4 antibody (ab72220)

Detection of Human Cip4 by Immunoprecipitation. 1mg HeLa whole cell lysate loaded in lanes 1-3 with an antibody recognising an upstream epitope in lane 1, ab72220 at 3 µg in lane 2 and control IgG in lane 3. Image shows immunoprecipitated Cip4 detected using post IP WB, loading 20% of IP and using ab72220 at 0.1 µg/ml. Detection: Chemiluminescence with an exposure time of 10 seconds.

**Please note:** All products are "FOR RESEARCH USE ONLY. NOT FOR USE IN DIAGNOSTIC PROCEDURES"

### Our Abpromise to you: Quality guaranteed and expert technical support

- Replacement or refund for products not performing as stated on the datasheet
- Valid for 12 months from date of delivery
- Response to your inquiry within 24 hours
- We provide support in Chinese, English, French, German, Japanese and Spanish
- Extensive multi-media technical resources to help you

- We investigate all quality concerns to ensure our products perform to the highest standards

If the product does not perform as described on this datasheet, we will offer a refund or replacement. For full details of the Abpromise, please visit <https://www.abcam.co.jp/abpromise> or contact our technical team.

#### **Terms and conditions**

---

- Guarantee only valid for products bought direct from Abcam or one of our authorized distributors