

### Anti-clAP2 antibody [E40] ab32059

リコンビナント RabMAb

★★★★☆ **2 Abreviews** **46 References** 画像数 8

#### 製品の概要

製品名	Anti-clAP2 antibody [E40]
製品の詳細	Rabbit monoclonal [E40] to clAP2
由来種	Rabbit
特異性	This antibody is specific for human clAP2. It does not cross-react with any other IAP family members.
アプリケーション	<b>適用あり:</b> Flow Cyt (Intra), WB, IHC-P, IP <b>適用なし:</b> ICC/IF
種交差性	<b>交差種:</b> Human
免疫原	Synthetic peptide within Human clAP2 aa 400-500. The exact sequence is proprietary.
ポジティブ・コントロール	WB: Daudi cell lysate IHC-P: Human spleen tissue, Human breast carcinomaIP: Daudi cell lysate Flow Cyt (intra): Raji cells
特記事項	<p>This product is a recombinant monoclonal antibody, which offers several advantages including:</p> <ul style="list-style-type: none"><li>- High batch-to-batch consistency and reproducibility</li><li>- Improved sensitivity and specificity</li><li>- Long-term security of supply</li><li>- Animal-free production</li></ul> <p>For more information <a href="#">see here</a>.</p> <p>Our RabMAb<sup>®</sup> technology is a patented hybridoma-based technology for making rabbit monoclonal antibodies. For details on our patents, please refer to <a href="#">RabMAb<sup>®</sup> patents</a>.</p> <p>Mouse, Rat: We have preliminary internal testing data to indicate this antibody may not react with these species. Please contact us for more information.</p>

#### 製品の特性

製品の状態	Liquid
保存方法	Shipped at 4°C. Store at +4°C short term (1-2 weeks). Upon delivery aliquot. Store at -20°C long term. Avoid freeze / thaw cycle.
バッファー	pH: 7.20 Preservative: 0.01% Sodium azide Constituents: 59% PBS, 40% Glycerol (glycerin, glycerine), 0.05% BSA

精製度	Protein A purified
ポリ/モノ	モノクローナル
クローン名	E40
アイソタイプ	IgG

## アプリケーション

**The Abpromise guarantee** **Abpromise保証は、次のテスト済みアプリケーションにおけるab32059の使用に適用されます**  
 アプリケーションノートには、推奨の開始希釈率がありますが、適切な希釈率につきましてはご検討ください。

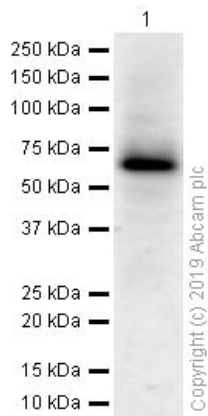
アプリケーション	Abreviews	特記事項
Flow Cyt (Intra)		1/70.
WB	★★★★☆ (2)	1/50000. Predicted molecular weight: 72 kDa. <b>For unpurified use at 1/1000.</b>
IHC-P		1/600. Perform heat mediated antigen retrieval with Tris/EDTA buffer pH 9.0 before commencing with IHC staining protocol. See <a href="#">IHC antigen retrieval protocols</a> .
IP		1/30. <b>For unpurified use at 5 µg/mL.</b>

**追加情報** Is unsuitable for ICC/IF.

## ターゲット情報

<b>機能</b>	Apoptotic suppressor. The BIR motifs region interacts with TNF receptor associated factors 1 and 2 (TRAF1 and TRAF2) to form an heteromeric complex, which is then recruited to the tumor necrosis factor receptor 2 (TNFR2).
<b>組織特異性</b>	Highly expressed in fetal lung, and kidney. In the adult, expression is mainly seen in lymphoid tissues, including spleen, thymus and peripheral blood lymphocytes.
<b>関連疾患</b>	Note=A chromosomal aberration involving BIRC3 is recurrent in low-grade mucosa-associated lymphoid tissue (MALT lymphoma). Translocation t(11;18)(q21;q21) with MALT1. This translocation is found in approximately 50% of cytogenetically abnormal low-grade MALT lymphoma.
<b>配列類似性</b>	Belongs to the IAP family. Contains 3 BIR repeats. Contains 1 CARD domain. Contains 1 RING-type zinc finger.
<b>細胞内局在</b>	Cytoplasm.

## 画像



Western blot - Anti-clAP2 antibody [E40] (ab32059)

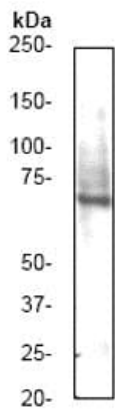
Anti-clAP2 antibody [E40] (ab32059) at 1/50000 dilution (Purified)  
+ Raji (Human Burkitt's lymphoma B lymphocyte) whole cell lysates  
at 15 µg

**Secondary**

Goat Anti-Rabbit IgG H&L (HRP) ([ab97051](#)) at 1/20000 dilution

**Predicted band size:** 72 kDa

**Observed band size:** 72 kDa

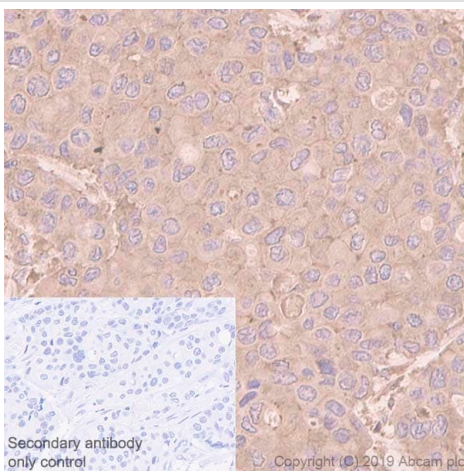


Western blot - Anti-clAP2 antibody [E40] (ab32059)

Anti-clAP2 antibody [E40] (ab32059) at 1/1000 dilution (unpurified)  
+ Daudi cell lysate.

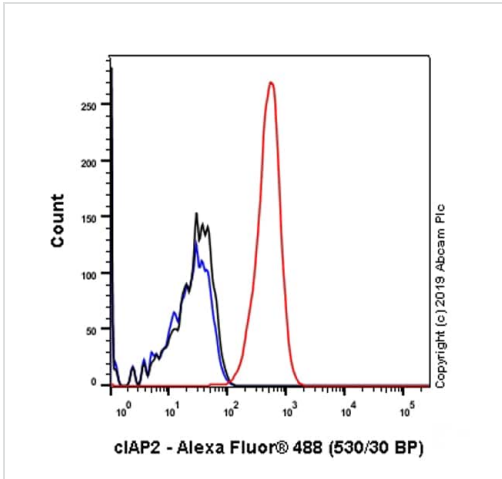
**Predicted band size:** 72 kDa

**Observed band size:** 72 kDa



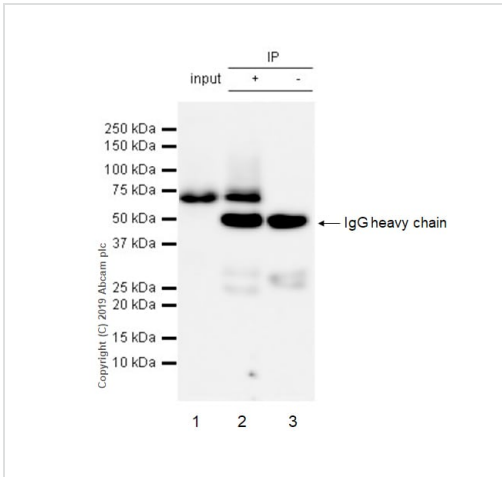
Immunohistochemistry (Formalin/PFA-fixed paraffin-embedded sections) - Anti-clAP2 antibody [E40] (ab32059)

Immunohistochemistry (Formalin/PFA-fixed paraffin-embedded sections) analysis of Human breast carcinoma tissue sections labeling clAP2 with purified ab32059 at 1/600 dilution (1.12 µg/ml). Perform heat mediated antigen retrieval using [ab93684](#) (Tris/EDTA buffer, pH 9.0). ImmunoHistoProbe one step HRP Polymer (ready to use) was used as the secondary antibody. Negative control: PBS instead of the primary antibody. Hematoxylin was used as a counterstain.



Flow Cytometry (Intracellular) - Anti-cIAP2 antibody [E40] (ab32059)

Intracellular Flow Cytometry analysis of Raji (Human Burkitt's lymphoma B lymphocyte) cells labeling cIAP2 with purified ab32059 at 1/70 dilution (10µg/ml) (red). Cells were fixed with 4% Paraformaldehyde and permeabilised with 90% Methanol. A Goat anti rabbit IgG (Alexa Fluor® 488, **ab150077**) secondary antibody was used at 1/2000. Isotype control - Rabbit monoclonal IgG (Black). Unlabeled control - Cell without incubation with primary antibody and secondary antibody (Blue).



Immunoprecipitation - Anti-cIAP2 antibody [E40] (ab32059)

ab32059 (purified) at 1/30 dilution (2ug) immunoprecipitating cIAP2 in Daudi whole cell lysates.

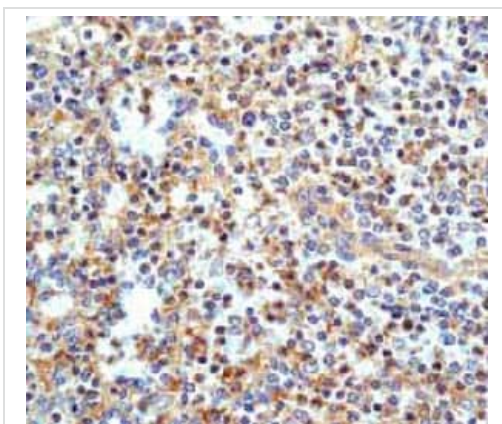
Lane 1: Daudi (Human Burkitt's lymphoma lymphoblast) whole cell lysates 10ug

Lane 2 (+): ab32059 & Daudi whole cell lysates

Lane 3 (-): Rabbit monoclonal IgG (**ab172730**) instead of ab32059 in Daudi whole cell lysates

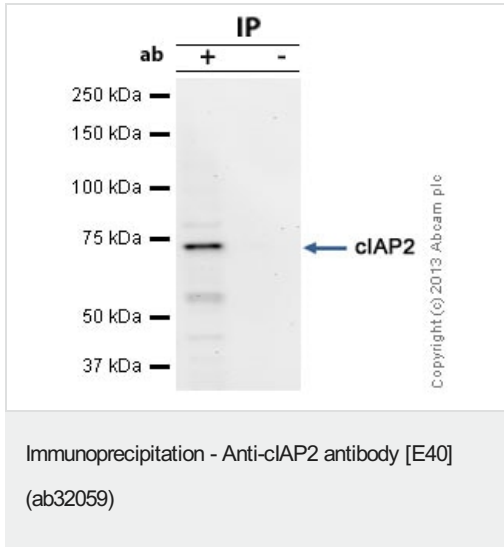
For western blotting, VeriBlot for IP Detection Reagent (HRP) (**ab131366**) was used at 1/1000 dilution.

Blocking and diluting buffer: 5% NFD/MTBST.



Immunohistochemistry (Formalin/PFA-fixed paraffin-embedded sections) - Anti-cIAP2 antibody [E40] (ab32059)

ab32059 (unpurified) at a 1/50 dilution staining cIAP2 in human normal spleen, using Immunohistochemistry, Paraffin Embedded Tissue.







cIAP2 was immunoprecipitated using 0.5mg Daudi whole cell extract, 5µg of Rabbit polyclonal to cIAP2 and 50µl of protein G magnetic beads (+). No antibody was added to the control (-). The antibody was incubated under agitation with Protein G beads for 10min, Daudi whole cell extract lysate diluted in RIPA buffer was added to each sample and incubated for a further 10min under agitation.

Proteins were eluted by addition of 40µl SDS loading buffer and incubated for 10min at 70°C; 10µl of each sample was separated on a SDS PAGE gel, transferred to a nitrocellulose membrane, blocked with 5% BSA and probed with ab32059 (unpurified). Secondary: Mouse monoclonal [SB62a] Secondary Antibody to Rabbit IgG light chain (HRP) ([ab99697](#)).

Band: 72kDa; cIAP2

Why choose a recombinant antibody?

 <p><b>Research with confidence</b> Consistent and reproducible results</p>	 <p><b>Long-term and scalable supply</b> Recombinant technology</p>
 <p><b>Success from the first experiment</b> Confirmed specificity</p>	 <p><b>Ethical standards compliant</b> Animal-free production</p>

Anti-cIAP2 antibody [E40] (ab32059)

**Please note:** All products are "FOR RESEARCH USE ONLY. NOT FOR USE IN DIAGNOSTIC PROCEDURES"

### Our Abpromise to you: Quality guaranteed and expert technical support

- Replacement or refund for products not performing as stated on the datasheet
- Valid for 12 months from date of delivery
- Response to your inquiry within 24 hours
- We provide support in Chinese, English, French, German, Japanese and Spanish
- Extensive multi-media technical resources to help you
- We investigate all quality concerns to ensure our products perform to the highest standards

If the product does not perform as described on this datasheet, we will offer a refund or replacement. For full details of the Abpromise, please visit <https://www.abcam.co.jp/abpromise> or contact our technical team.

## Terms and conditions

---

- Guarantee only valid for products bought direct from Abcam or one of our authorized distributors