


Anti-clAP2 antibody ab23423

★★★★★ [7 Abreviews](#) [10 References](#) [画像数 4](#)

製品の概要

製品名	Anti-clAP2 antibody
製品の詳細	Rabbit polyclonal to clAP2
由来種	Rabbit
特異性	The immunogen used for this product shares 85% homology with clAP1. Cross-reactivity with this protein has not been confirmed experimentally.
アプリケーション	適用あり: WB, ICC/IF
種交差性	交差種: Human 交差が予測される動物種: Mouse, Rat, Chicken, Dog 
免疫原	Synthetic peptide corresponding to Human clAP2 aa 550 to the C-terminus (C terminal) conjugated to keyhole limpet haemocyanin. (Peptide available as ab25892)
ポジティブ・コントロール	This antibody gave a positive signal in HeLa cells.
特記事項	<p>The Life Science industry has been in the grips of a reproducibility crisis for a number of years. Abcam is leading the way in addressing this with our range of recombinant monoclonal antibodies and knockout edited cell lines for gold-standard validation. Please check that this product meets your needs before purchasing.</p> <p>If you have any questions, special requirements or concerns, please send us an inquiry and/or contact our Support team ahead of purchase. Recommended alternatives for this product can be found below, along with publications, customer reviews and Q&As</p>

製品の特性

製品の状態	Liquid
保存方法	Shipped at 4°C. Store at +4°C short term (1-2 weeks). Upon delivery aliquot. Store at -20°C or -80°C. Avoid freeze / thaw cycle.
バッファー	pH: 7.40 Preservative: 0.02% Sodium azide Constituent: PBS Batches of this product that have a concentration < 1mg/ml may have BSA added as a stabilising agent. If you would like information about the formulation of a specific lot, please contact our

	scientific support team who will be happy to help.
精製度	Immunogen affinity purified
ポリ/モノ	ポリクローナル
アイソタイプ	IgG

アプリケーション

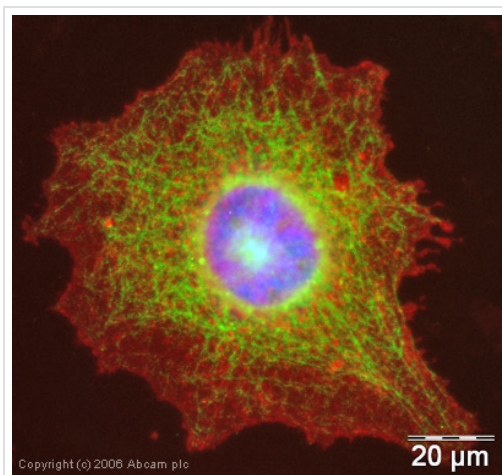
The Abpromise guarantee **Abpromise保証は、次のテスト済みアプリケーションにおけるab23423の使用に適用されます**
 アプリケーションノートには、推奨の開始希釈率がありますが、適切な希釈率につきましてはご検討ください。

アプリケーション	Abreviews	特記事項
WB	★★★★★ (4)	Use a concentration of 1 µg/ml. Detects a band of approximately 71 kDa (predicted molecular weight: 68 kDa).
ICC/IF	★★★★★ (1)	Use a concentration of 1 µg/ml.

ターゲット情報

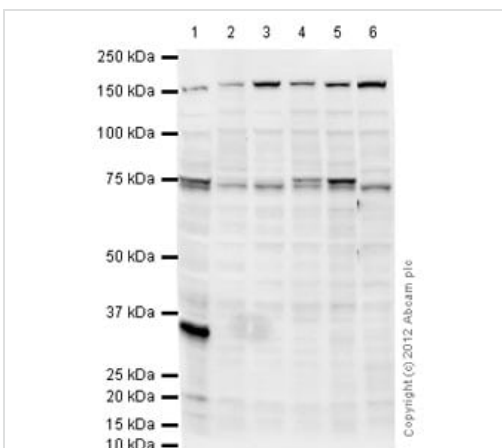
機能	Apoptotic suppressor. The BIR motifs region interacts with TNF receptor associated factors 1 and 2 (TRAF1 and TRAF2) to form an heteromeric complex, which is then recruited to the tumor necrosis factor receptor 2 (TNFR2).
組織特異性	Highly expressed in fetal lung, and kidney. In the adult, expression is mainly seen in lymphoid tissues, including spleen, thymus and peripheral blood lymphocytes.
関連疾患	Note=A chromosomal aberration involving BIRC3 is recurrent in low-grade mucosa-associated lymphoid tissue (MALT lymphoma). Translocation t(11;18)(q21;q21) with MALT1. This translocation is found in approximately 50% of cytogenetically abnormal low-grade MALT lymphoma.
配列類似性	Belongs to the IAP family. Contains 3 BIR repeats. Contains 1 CARD domain. Contains 1 RING-type zinc finger.
細胞内局在	Cytoplasm.

画像



Immunocytochemistry/ Immunofluorescence - Anti-clAP2 antibody (ab23423)

ICC/IF image of ab23423 stained human HeLa cells. The cells were methanol fixed (5 min) and incubated with the antibody (ab23423, 1 µg/ml) for 1h at room temperature. The secondary antibody (green) was Alexa Fluor® 488 goat anti-rabbit IgG (H+L) used at a 1/1000 dilution for 1h. Image-iT™ FX Signal Enhancer was used as the primary blocking agent, 5% BSA (in TBS-T) was used for all other blocking steps. DAPI was used to stain the cell nuclei (blue). Alexa Fluor® 594 WGA was used to label plasma membranes (red).



Western blot - Anti-clAP2 antibody (ab23423)

All lanes : Anti-clAP2 antibody (ab23423) at 1 µg/ml

Lane 1 : Daudi (Human Burkitt's lymphoma cell line) Whole Cell Lysate

Lane 2 : MOLT4 (Human acute lymphoblastic leukemia cell line) Whole Cell Lysate

Lane 3 : Jurkat (Human T cell lymphoblast-like cell line) Whole Cell Lysate

Lane 4 : Ramos (Human Burkitt's lymphoma cell line) Whole Cell Lysate

Lane 5 : Raji (Human Burkitt's lymphoma cell line) Whole Cell Lysate

Lane 6 : HepG2 (Human hepatocellular liver carcinoma cell line) Whole Cell Lysate

Lysates/proteins at 10 µg/ml per lane.

Secondary

All lanes : Goat Anti-Rabbit IgG H&L (HRP) preadsorbed (**ab97080**) at 1/5000 dilution

Developed using the ECL technique.

Performed under reducing conditions.

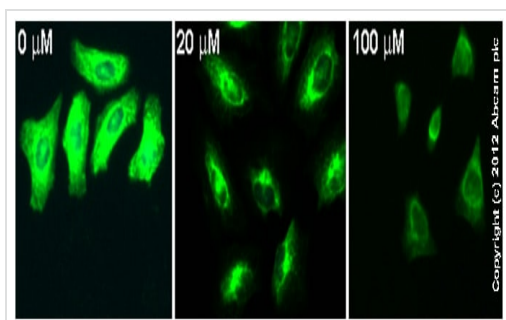
Predicted band size: 68 kDa

Observed band size: 73 kDa

Additional bands at: 150 kDa, 35 kDa, 75 kDa. We are unsure as to the identity of these extra bands.

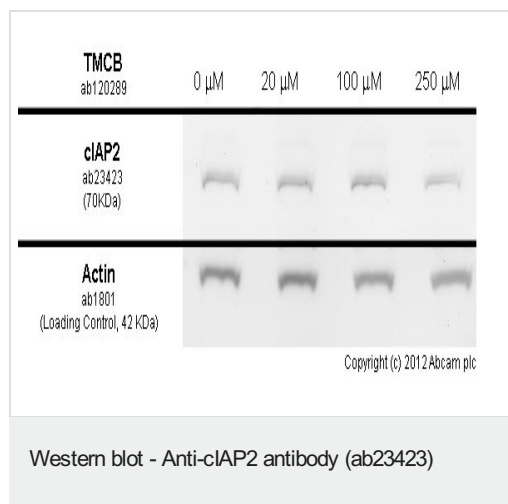
Exposure time: 8 minutes

A doublet was observed in Daudi, Ramos and Raji whole cell lysates (lanes 1, 4 and 5). This data suggests that ab23423 might react with both cIAP1 and cIAP2 proteins. The predicted molecular weights of cIAP1 and cIAP2 are 69-kDa and 68-kDa respectively. Abcam welcomes customer feedback and would appreciate any comments regarding this product and the data presented above.



Immunocytochemistry/ Immunofluorescence - Anti-cIAP2 antibody (ab23423)

ab23423 staining cIAP2 in HeLa cells treated with TMCB (**ab120289**), by ICC/IF. Decrease in cIAP2 expression correlates with increased concentration of TMCB, as described in literature. The cells were incubated at 37°C for 10 minutes in media containing different concentrations of **ab120289** (TMCB) in DMSO, fixed with 4% formaldehyde for 10 minutes at room temperature and blocked with PBS containing 10% goat serum, 0.3 M glycine, 1% BSA and 0.1% tween for 2h at room temperature. Staining of the treated cells with ab23423 (5 µg/ml) was performed overnight at 4°C in PBS containing 1% BSA and 0.1% tween. A DyLight 488 goat anti-rabbit polyclonal antibody (**ab96899**) at 1/250 dilution was used as the secondary antibody. Nuclei were counterstained with DAPI and are shown in blue.



HeLa cells were incubated at 37°C for 24h with vehicle control (0 μM) and different concentrations of TMCB (**ab120289**). Decreased expression of cIAP2 in HeLa cells correlates with an increase in TMCB concentration, as described in literature.

Whole cell lysates were prepared with RIPA buffer (containing protease inhibitors and sodium orthovanadate), 40μg of each were loaded on the gel and the WB was run under reducing conditions. After transfer the membrane was blocked for an hour using 5% BSA before being incubated with ab23423 at 2 μg/ml and **ab1801** at 2 μg/ml overnight at 4°C. Antibody binding was detected using an anti-rabbit antibody conjugated to HRP (**ab97051**) at 1/10000 dilution and visualised using ECL development solution.

Please note: All products are "FOR RESEARCH USE ONLY. NOT FOR USE IN DIAGNOSTIC PROCEDURES"

Our Abpromise to you: Quality guaranteed and expert technical support

- Replacement or refund for products not performing as stated on the datasheet
- Valid for 12 months from date of delivery
- Response to your inquiry within 24 hours
- We provide support in Chinese, English, French, German, Japanese and Spanish
- Extensive multi-media technical resources to help you
- We investigate all quality concerns to ensure our products perform to the highest standards

If the product does not perform as described on this datasheet, we will offer a refund or replacement. For full details of the Abpromise, please visit <https://www.abcam.co.jp/abpromise> or contact our technical team.

Terms and conditions

- Guarantee only valid for products bought direct from Abcam or one of our authorized distributors