

Anti-Chromogranin C/SGII antibody ab126935

1 References [画像数 7](#)

医薬用外劇物

製品の概要

製品名	Anti-Chromogranin C/SGII antibody
製品の詳細	Rabbit polyclonal to Chromogranin C/SGII
由来種	Rabbit
アプリケーション	適用あり: WB, IHC-P
種交差性	交差種: Mouse, Rat, Human
免疫原	Recombinant fragment corresponding to Human Chromogranin C/SGII aa 1-187.
ポジティブ・コントロール	WB: IMR32, U-87 MG and rat and mouse brain lysates; IHC-P: RT2 xenograft, U87 xenograft, Human Colon carcinoma and mouse fore brain tissue.
特記事項	Keep as concentrated solution. The Life Science industry has been in the grips of a reproducibility crisis for a number of years. Abcam is leading the way in addressing this with our range of recombinant monoclonal antibodies and knockout edited cell lines for gold-standard validation. Please check that this product meets your needs before purchasing. If you have any questions, special requirements or concerns, please send us an inquiry and/or contact our Support team ahead of purchase. Recommended alternatives for this product can be found below, along with publications, customer reviews and Q&As

製品の特性

製品の状態	Liquid
保存方法	Shipped at 4°C. Upon delivery aliquot. Store at -20°C or -80°C. Avoid freeze / thaw cycle.
バッファー	pH: 7.00 Preservative: 0.01% Thimerosal (merthiolate) Constituents: 78.99% PBS, 1% BSA, 20% Glycerol (glycerin, glycerine)
精製度	Immunogen affinity purified
ポリ/モノ	ポリクローナル
アイソタイプ	IgG

アプリケーション

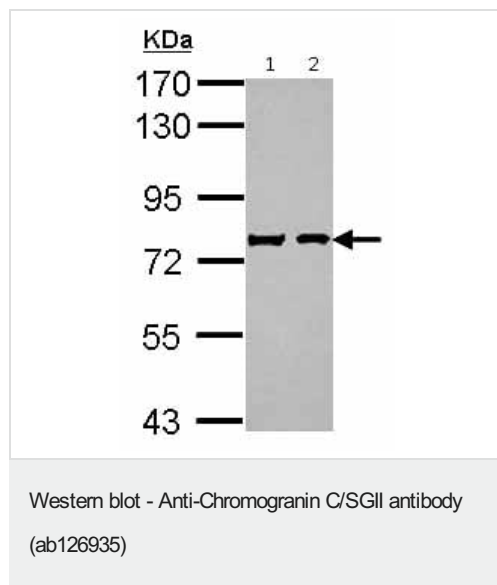
The Abpromise guarantee Abpromise保証は、次のテスト済みアプリケーションにおけるab126935の使用に適用されます
アプリケーションノートには、推奨の開始希釈率がありますが、適切な希釈率につきましてはご確認ください。

アプリケーション	Abreviews	特記事項
WB		1/500 - 1/3000. Predicted molecular weight: 71 kDa.
IHC-P		1/100 - 1/1000. Perform heat mediated antigen retrieval with citrate buffer pH 6 before commencing with IHC staining protocol.

ターゲット情報

機能	Secretogranin-2 is a neuroendocrine secretory granule protein, which is the precursor for biologically active peptides.
配列類似性	Belongs to the chromogranin/secretogranin protein family.
細胞内局在	Secreted. Neuroendocrine and endocrine secretory granules.

画像



All lanes : Anti-Chromogranin C/SGII antibody (ab126935) at 1/1000 dilution

Lane 1 : IMR32 whole cell lysate

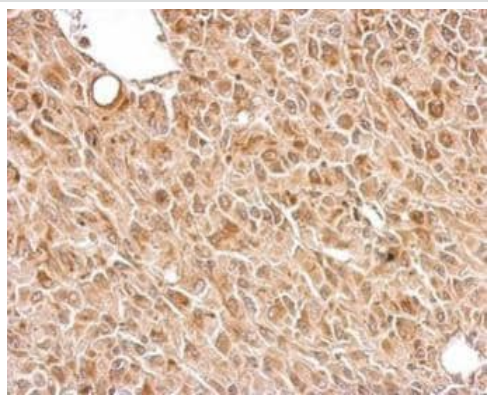
Lane 2 : U-87 MG whole cell lysate

Lysates/proteins at 30 µg per lane.

Developed using the ECL technique.

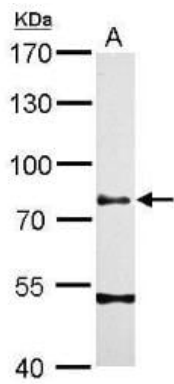
Predicted band size: 71 kDa

7.5% SDS PAGE



ab126935, at 1/250 dilution, staining Chromogranin C/SGII in Paraffin-embedded U87 xenograft by Immunohistochemistry.

Immunohistochemistry (Formalin/PFA-fixed paraffin-embedded sections) - Anti-Chromogranin C/SGII antibody (ab126935)



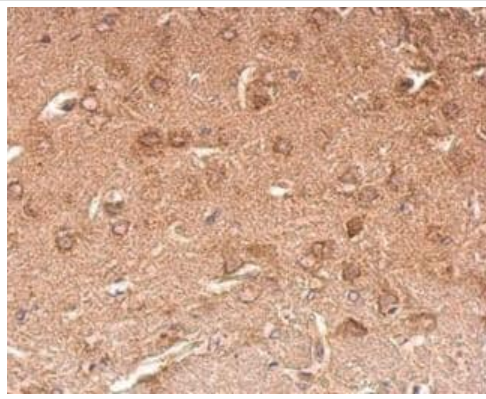
Anti-Chromogranin C/SGII antibody (ab126935) at 1/500 dilution + rat brain lysate at 50 μ g

Secondary

HRP-conjugated anti-rabbit IgG antibody

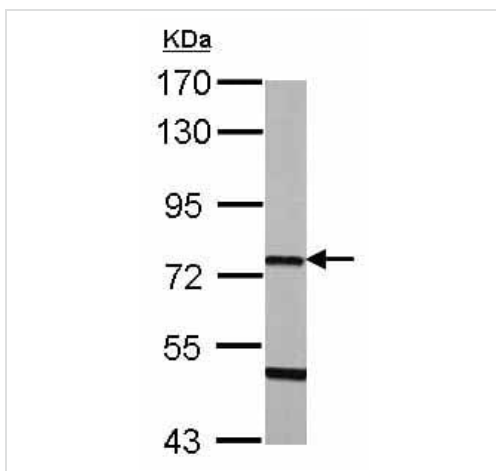
Predicted band size: 71 kDa

Western blot - Anti-Chromogranin C/SGII antibody (ab126935)



Immunohistochemistry (Formalin/PFA-fixed paraffin-embedded sections) - Anti-Chromogranin C/SGII antibody (ab126935)

ab126935, at 1/250 dilution, staining Chromogranin C/SGII in Paraffin-embedded mouse fore brain by Immunohistochemistry.



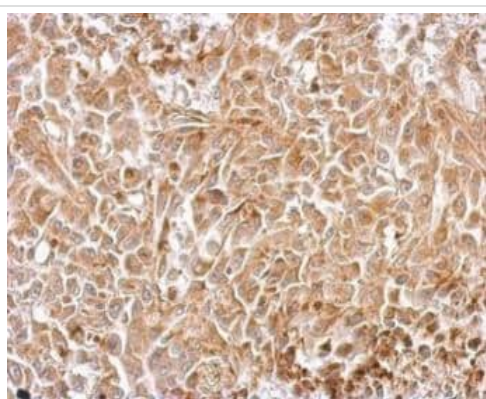
Western blot - Anti-Chromogranin C/SGII antibody (ab126935)

Anti-Chromogranin C/SGII antibody (ab126935) at 1/1000 dilution + Mouse brain whole cell lysate at 50 μ g

Developed using the ECL technique.

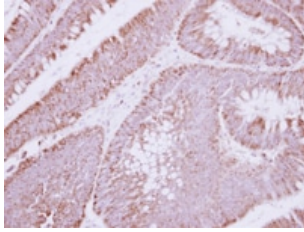
Predicted band size: 71 kDa

7.5% SDS PAGE



Immunohistochemistry (Formalin/PFA-fixed paraffin-embedded sections) - Anti-Chromogranin C/SGII antibody (ab126935)

ab126935, at 1/250 dilution, staining Chromogranin C/SGII in Paraffin-embedded RT2 xenograft by Immunohistochemistry.



ab126935, at 1/250 dilution, staining Chromogranin C/SGII in Paraffin-embedded Human Colon carcinoma by Immunohistochemistry.

Immunohistochemistry (Formalin/PFA-fixed paraffin-embedded sections) - Anti-Chromogranin C/SGII antibody (ab126935)

Please note: All products are "FOR RESEARCH USE ONLY. NOT FOR USE IN DIAGNOSTIC PROCEDURES"

Our Abpromise to you: Quality guaranteed and expert technical support

- Replacement or refund for products not performing as stated on the datasheet
- Valid for 12 months from date of delivery
- Response to your inquiry within 24 hours
- We provide support in Chinese, English, French, German, Japanese and Spanish
- Extensive multi-media technical resources to help you
- We investigate all quality concerns to ensure our products perform to the highest standards

If the product does not perform as described on this datasheet, we will offer a refund or replacement. For full details of the Abpromise, please visit <https://www.abcam.co.jp/abpromise> or contact our technical team.

Terms and conditions

- Guarantee only valid for products bought direct from Abcam or one of our authorized distributors