

# Anti-Chromogranin B antibody ab12242

★★★★★ [2 Abreviews](#) [10 References](#) [画像数 1](#)

### 製品の概要

製品名	Anti-Chromogranin B antibody
製品の詳細	Rabbit polyclonal to Chromogranin B
由来種	Rabbit
アプリケーション	<b>適用あり:</b> WB, IHC-P
種交差性	<b>交差種:</b> Mouse, Rat, Human
免疫原	Synthetic peptide corresponding to Human Chromogranin B aa 600-700 (C terminal) conjugated to ovalbumin. Human, mouse and rat sequences are identical Database link: <a href="#">P05060</a>

### 特記事項

The Life Science industry has been in the grips of a reproducibility crisis for a number of years. Abcam is leading the way in addressing this with our range of recombinant monoclonal antibodies and knockout edited cell lines for gold-standard validation. Please check that this product meets your needs before purchasing.

If you have any questions, special requirements or concerns, please send us an inquiry and/or contact our Support team ahead of purchase. Recommended alternatives for this product can be found below, along with publications, customer reviews and Q&As

### 製品の特性

製品の状態	Liquid
保存方法	Shipped at 4°C. Upon delivery aliquot and store at -20°C or -80°C. Avoid repeated freeze / thaw cycles.
バッファー	Constituent: Whole serum
精製度	Whole antiserum
ポリ/モノ	ポリクローナル
アイソタイプ	IgG

### アプリケーション

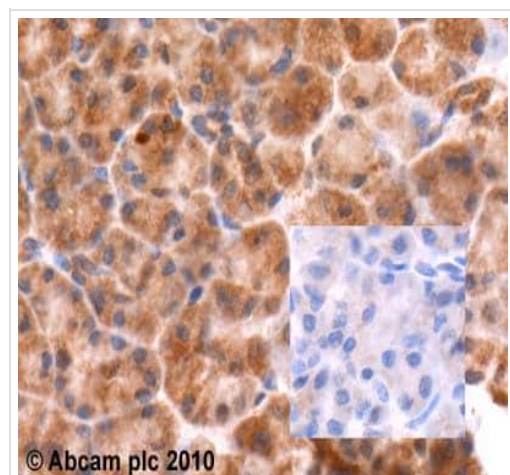
**The Abpromise guarantee**      **Abpromise保証は、** 次のテスト済みアプリケーションにおけるab12242の使用に適用されます  
アプリケーションノートには、推奨の開始希釈率がありますが、適切な希釈率につきましてはご検討ください。

アプリケーション	Abreviews	特記事項
WB	★★★★★ (2)	1/2500 - 1/10000.
IHC-P		1/500 - 1/5000.

## ターゲット情報

機能	Secretogranin-1 is a neuroendocrine secretory granule protein, which may be the precursor for other biologically active peptides.
組織特異性	Expressed in the adrenal medulla, and in pheochromocytoma. Not expressed in liver.
配列類似性	Belongs to the chromogranin/secretogranin protein family.
翻訳後修飾	Extensively processed by limited proteolysis at conserved basic residues. Alternative processing are seen in different tissues.
細胞内局在	Secreted. Neuroendocrine and endocrine secretory granules.

## 画像



Immunohistochemistry (Formalin/PFA-fixed paraffin-embedded sections) - Anti-Chromogranin B antibody (ab12242)

ab12242(1:1000) staining Chromogranin B in human pancreas (IgG inset) using an automated system (DAKO Autostainer Plus). Using this protocol there is strong staining of Chromogranin B in secretory compartments of the pancreas.

Insert panel depicts negative control (no primary antibody).

Sections were rehydrated and antigen retrieved with the Dako 3 in 1 AR buffer EDTA pH9.0 in a DAKO PT link. Slides were peroxidase blocked in 3% H<sub>2</sub>O<sub>2</sub> in methanol for 10 mins. They were then blocked with Dako Protein block for 10 minutes (containing casein 0.25% in PBS) then incubated with primary antibody for 20 min and detected with Dako envision flex amplification kit for 30 minutes. Colorimetric detection was completed with Diaminobenzidine for 5 minutes. Slides were counterstained with Haematoxylin and coverslipped under DePeX. Please note that, for manual staining, optimization of primary antibody concentration and incubation time is recommended. Signal amplification may be required.

**Please note:** All products are "FOR RESEARCH USE ONLY. NOT FOR USE IN DIAGNOSTIC PROCEDURES"

## Our Abpromise to you: Quality guaranteed and expert technical support

- Replacement or refund for products not performing as stated on the datasheet
- Valid for 12 months from date of delivery

- Response to your inquiry within 24 hours
- We provide support in Chinese, English, French, German, Japanese and Spanish
- Extensive multi-media technical resources to help you
- We investigate all quality concerns to ensure our products perform to the highest standards

If the product does not perform as described on this datasheet, we will offer a refund or replacement. For full details of the Abpromise, please visit <https://www.abcam.co.jp/abpromise> or contact our technical team.

#### **Terms and conditions**

---

- Guarantee only valid for products bought direct from Abcam or one of our authorized distributors