

# Anti-CHRAC-17 antibody ab88521

画像数 3

### 製品の概要

---

|              |   |
|--------------|---|
| 製品名          | Anti-CHRAC-17 antibody  |
| 製品の詳細        | Mouse polyclonal to CHRAC-17  |
| 由来種          | Mouse   |
| アプリケーション     | <b>適用あり:</b> WB, ICC/IF   |
| 種交差性         | <b>交差種:</b> Human   |
| 免疫原          | Recombinant full length protein within Human CHRAC-17. The exact immunogen sequence used to generate this antibody is proprietary information. If additional detail on the immunogen is needed to determine the suitability of the antibody for your needs, please <b>contact</b> our Scientific Support team to discuss your requirements. AAH03166.1  |
| ポジティブ・コントロール | Human liver tissue lysate. CHRAC-17 transfected 293T cell lysate. HeLa cells.   |
| 特記事項         | <p>The Life Science industry has been in the grips of a reproducibility crisis for a number of years. Abcam is leading the way in addressing this with our range of recombinant monoclonal antibodies and knockout edited cell lines for gold-standard validation. Please check that this product meets your needs before purchasing.</p> <p>If you have any questions, special requirements or concerns, please send us an inquiry and/or contact our Support team ahead of purchase. Recommended alternatives for this product can be found below, along with publications, customer reviews and Q&amp;As</p> |

### 製品の特性

---

|        |   |
|--------|---|
| 製品の状態  | Liquid  |
| 保存方法   | Shipped at 4°C. Upon delivery aliquot and store at -20°C or -80°C. Avoid repeated freeze / thaw cycles. |
| バッファー  | pH: 7.40<br>Constituent: 100% PBS   |
| 精製度    | Protein A purified  |
| ポリ/モノ  | ポリクローナル   |
| アイソタイプ | IgG   |

### アプリケーション

---

## The Abpromise guarantee

**Abpromise保証は、次のテスト済みアプリケーションにおけるab88521の使用に適用されます**

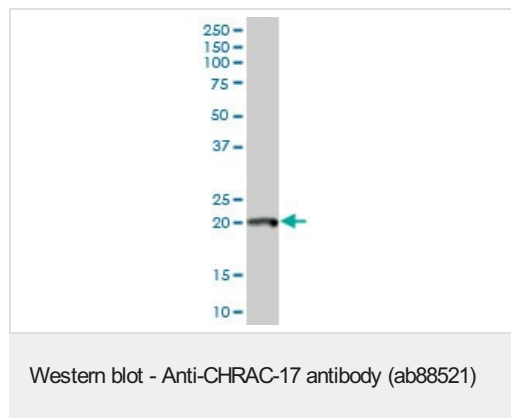
アプリケーションノートには、推奨の開始希釈率がありますが、適切な希釈率につきましてはご検討ください。

| アプリケーション | Abreviews | 特記事項  |
|----------|-----------|---|
| WB       |           | Use a concentration of 1 µg/ml. Predicted molecular weight: 17 kDa. |
| ICC/IF   |           | Use a concentration of 10 µg/ml.                                    |

## ターゲット情報

|       |  |
|-------|--|
| 機能    | Forms a complex with DNA polymerase epsilon subunit CHRAC1 and binds naked DNA, which is then incorporated into chromatin, aided by the nucleosome-remodeling activity of ISWI/SNF2H and ACF1. |
| 組織特異性 | Expressed in all tissues tested, including, heart, brain, placenta, lung, liver, skeletal muscle, kidney and pancreas.   |
| 細胞内局在 | Nucleus.   |

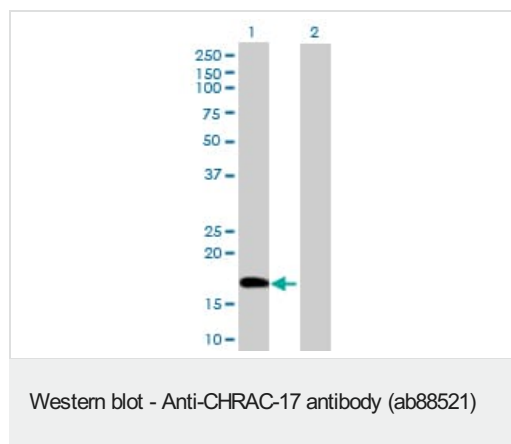
## 画像



Anti-CHRAC-17 antibody (ab88521) at 1 µg/ml + Human liver tissue lysate at 50 µg

**Predicted band size:** 17 kDa

**Observed band size:** 20 kDa



**All lanes :** Anti-CHRAC-17 antibody (ab88521) at 1 µg/ml

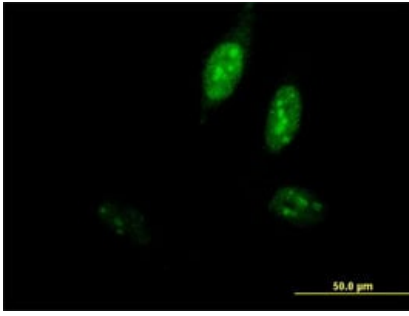
**Lane 1 :** CHRAC-17 transfected HEK-293T cell lysate

**Lane 2 :** Non-transfected HEK-293T cell lysate

Lysates/proteins at 25 µg per lane.

**Predicted band size:** 17 kDa

**Observed band size:** 17 kDa



ab88521, at 10 µg/ml, staining CHRAC-17 in HeLa cells by Immunofluorescence.

Immunocytochemistry/ Immunofluorescence - Anti-CHRAC-17 antibody (ab88521)

**Please note:** All products are "FOR RESEARCH USE ONLY. NOT FOR USE IN DIAGNOSTIC PROCEDURES"

### Our Abpromise to you: Quality guaranteed and expert technical support

---

- Replacement or refund for products not performing as stated on the datasheet
- Valid for 12 months from date of delivery
- Response to your inquiry within 24 hours
- We provide support in Chinese, English, French, German, Japanese and Spanish
- Extensive multi-media technical resources to help you
- We investigate all quality concerns to ensure our products perform to the highest standards

If the product does not perform as described on this datasheet, we will offer a refund or replacement. For full details of the Abpromise, please visit <https://www.abcam.co.jp/abpromise> or contact our technical team.

### Terms and conditions

---

- Guarantee only valid for products bought direct from Abcam or one of our authorized distributors