

Anti-Chondroitin Sulfate antibody [CS-56] ab11570

★★★★★ **6 Abreviews** **63 References** 画像数 3

製品の概要

製品名	Anti-Chondroitin Sulfate antibody [CS-56]
製品の詳細	Mouse monoclonal [CS-56] to Chondroitin Sulfate
由来種	Mouse
特異性	The antibody has been reported to be specific for the glycosaminoglycan (GAG) portion of native chondroitin sulfate proteoglycan (CSPG). The antibody reacts specifically with chondroitin sulfate types A and C but not with type B (dermatan sulfate), and may be used for localization of chondroitin sulfate in tissues and cultured fibroblasts.
アプリケーション	適用あり: Electron Microscopy, IHC-P, ICC/IF
種交差性	交差種: Mouse, Chicken, Cow, Human, Apterionotus leptorhynchus
免疫原	Tissue, cells or virus corresponding to Chicken Chondroitin Sulfate.
ポジティブ・コントロール	Bovine mammary gland epithelial (BMGE) cells. IHC-P: human colon cancer sections
特記事項	<p>This product was changed from ascites to tissue culture supernatant on 25th October 2016. The following lot(s) is/are from ascites and is still in stock as of 25th October 2016 - GR288674, GR272407. Lot numbers higher than GR288674, GR272407 will be from tissue culture supernatant. Please note that the dilutions may need to be adjusted accordingly</p> <p>Storage in frost-free freezers is not recommended. If slight turbidity occurs upon prolonged storage, clarify the solution by centrifugation before use.</p> <p>Many cellular activities depend on the interaction of cells with the surrounding extracellular matrix (ECM). Most cells, in intact tissue and in culture, are attached to an ECM. Epithelial cells are associated with the basement membrane; fibroblastic cells are usually embedded in a pericellular mesh of fibrils, and tissue culture cells usually grow on a substrate which is covered by various ECM components. Studies have indicated that the matrix or its various isolated components provide not only adhesive surfaces for cells to grow on but also have effects on the rate of cell growth, mobility, morphogenesis and differentiation. Within the ECM several glycoproteins and proteoglycans have been identified. It has been proposed that the different constituents interact with each other in a rather complex fashion. The poor antigenicity of proteoglycans especially their glycoaminoglycan (GAG) moieties make it difficult to localize these molecules in tissue and cell culture. Monoclonal Anti-Chondroitin Sulfate can be used to study chondroitin sulfate proteoglycan (CSPG) distribution and its relationships to specific cell-substrate contacts.</p> <p>The Life Science industry has been in the grips of a reproducibility crisis for a number of years. Abcam is leading the way in addressing this with our range of recombinant monoclonal antibodies and knockout edited cell lines for gold-standard validation. Please check that this product meets your needs before purchasing.</p>

If you have any questions, special requirements or concerns, please send us an inquiry and/or contact our Support team ahead of purchase. Recommended alternatives for this product can be found below, along with publications, customer reviews and Q&As

製品の特性

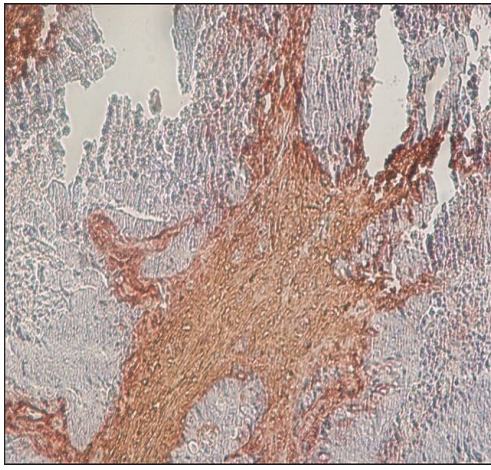
製品の状態	Liquid
保存方法	Shipped at 4°C. Upon delivery aliquot and store at -20°C or -80°C. Avoid repeated freeze / thaw cycles.
バッファー	pH: 7.40 Preservative: 0.097% Sodium azide Constituent: PBS
精製度	Proprietary Purification
特記事項 (精製)	Purified from Tissue culture supernatant.
ポリ/モノ	モノクローナル
クローン名	CS-56
アイソタイプ	IgM

アプリケーション

The Abpromise guarantee **Abpromise保証は、次のテスト済みアプリケーションにおけるab11570の使用に適用されます**
アプリケーションノートには、推奨の開始希釈率がありますが、適切な希釈率につきましてはご検討ください。

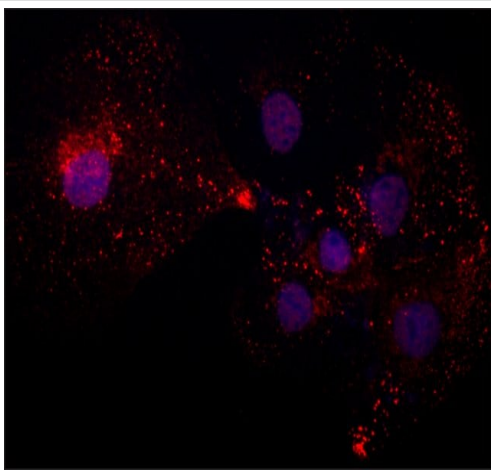
アプリケーション	Abreviews	特記事項
Electron Microscopy		Use at an assay dependent concentration.
IHC-P	★★★★★ (3)	1/2500.
ICC/IF		Use at an assay dependent concentration.

画像



Immunohistochemistry (Formalin/PFA-fixed paraffin-embedded sections) - Anti-Chondroitin Sulfate antibody [CS-56] (ab11570)

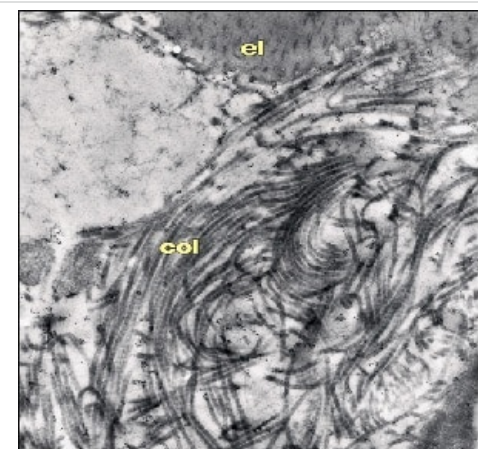
Immunohistochemical analysis of formalin-fixed, paraffin-embedded human colon cancer sections labelling chondroitin sulfate with ab11570 at 1/2500 dilution.



Immunocytochemistry/ Immunofluorescence - Anti-Chondroitin Sulfate antibody [CS-56] (ab11570)

This antibody was developed using Goat Anti-Mouse IgM, Cy3™ conjugate.

Immunocytochemistry analysis of cow mammary gland epithelial cells labeling Chondroitin Sulfate with ab11570 at 2.5 µg/mL. Cells were fixed and permeabilized with 4% Paraformaldehyde and 0.5% Triton X-100. The antibody was developed using Goat Anti-Mouse IgG, Cy3™ conjugate. Cells were counterstained with DAPI (blue) to stain nuclei.



Electron Microscopy - Anti-Chondroitin Sulfate antibody [CS-56] (ab11570)

Normal rabbit aorta, Lowicryl K4M thin section, stained with Monoclonal Anti-Chondroitin Sulfate, ab11570 and Goat Anti-Mouse IgM (µ-chain specific) 10 nm gold. Counterstain was uranyl acetate and Reynold's lead citrate. Magnification 44,600x. (el=Elastin, col=Collagen).

Please note: All products are "FOR RESEARCH USE ONLY. NOT FOR USE IN DIAGNOSTIC PROCEDURES"

Our Abpromise to you: Quality guaranteed and expert technical support

- Replacement or refund for products not performing as stated on the datasheet
- Valid for 12 months from date of delivery
- Response to your inquiry within 24 hours
- We provide support in Chinese, English, French, German, Japanese and Spanish
- Extensive multi-media technical resources to help you
- We investigate all quality concerns to ensure our products perform to the highest standards

If the product does not perform as described on this datasheet, we will offer a refund or replacement. For full details of the Abpromise, please visit <https://www.abcam.co.jp/abpromise> or contact our technical team.

Terms and conditions

- Guarantee only valid for products bought direct from Abcam or one of our authorized distributors