

# Anti-Chk1 (phospho S317) antibody ab59239

[1 Abreviews](#) [2 References](#) [画像数 3](#)

### 製品の概要

製品名	Anti-Chk1 (phospho S317) antibody
製品の詳細	Rabbit polyclonal to Chk1 (phospho S317)
由来種	Rabbit
特異性	From Jan 2024, QC testing of replenishment batches of this polyclonal changed. All tested and expected application and reactive species combinations are still covered by our Abcam product promise. However, we no longer test all applications. For more information on a specific batch, please contact our Scientific Support who will be happy to help.
アプリケーション	適用あり: IHC-P, WB, ICC/IF
種交差性	交差種: Human
免疫原	Synthetic peptide. This information is proprietary to Abcam and/or its suppliers.
ポジティブ・コントロール	This antibody gave a positive signal in the following whole cell lysates: HeLa; Jurkat; Ramos. IHC-P: Human testis FFPE tissue sections.
特記事項	<p>The Life Science industry has been in the grips of a reproducibility crisis for a number of years. Abcam is leading the way in addressing this with our range of recombinant monoclonal antibodies and knockout edited cell lines for gold-standard validation. Please check that this product meets your needs before purchasing.</p> <p>If you have any questions, special requirements or concerns, please send us an inquiry and/or contact our Support team ahead of purchase. Recommended alternatives for this product can be found below, along with publications, customer reviews and Q&amp;As</p>

### 製品の特性

製品の状態	Liquid
保存方法	Shipped at 4°C. Store at +4°C short term (1-2 weeks). Upon delivery aliquot. Store at -20°C or -80°C. Avoid freeze / thaw cycle.
バッファー	<p>pH: 7.40</p> <p>Preservative: 0.02% Sodium azide</p> <p>Constituent: PBS</p> <p>Batches of this product that have a concentration &lt; 1mg/ml may have BSA added as a stabilising agent. If you would like information about the formulation of a specific lot, please contact our scientific support team who will be happy to help.</p>

精製度	Immunogen affinity purified
ポリ/モノ	ポリクローナル
アイソタイプ	IgG

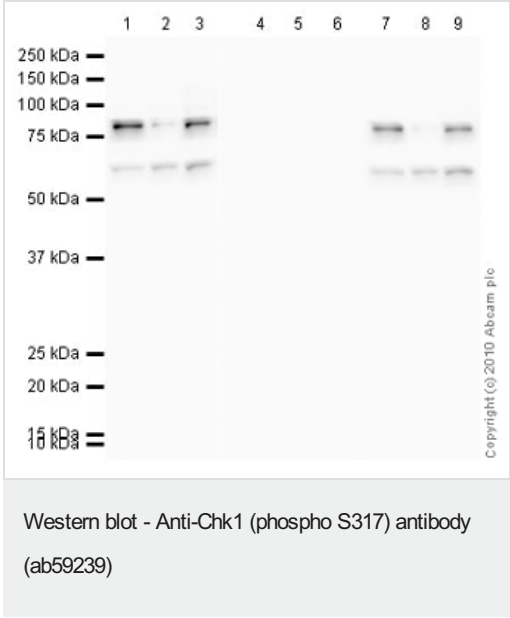
### アプリケーション

**The Abpromise guarantee**      **Abpromise保証は、次のテスト済みアプリケーションにおけるab59239の使用に適用されます**  
 アプリケーションノートには、推奨の開始希釈率がありますが、適切な希釈率につきましてはご確認ください。

アプリケーション	Abreviews	特記事項
IHC-P		Use a concentration of 1 µg/ml.
WB		Use a concentration of 1 µg/ml. Detects a band of approximately 58 kDa (predicted molecular weight: 54 kDa).
ICC/IF		Use a concentration of 5 µg/ml.

### ターゲット情報

### 画像



**All lanes :** Anti-Chk1 (phospho S317) antibody (ab59239) at 1 µg/ml

- Lane 1 :** HeLa (Human epithelial carcinoma cell line) Whole Cell Lysate
- Lane 2 :** Jurkat (Human T cell lymphoblast-like cell line) Whole Cell Lysate
- Lane 3 :** Ramos (Human Burkitt's lymphoma cell line) Whole Cell Lysate
- Lane 4 :** HeLa (Human epithelial carcinoma cell line) Whole Cell Lysate with Chk1 (phospho S317) peptide ([ab94392](#)) at 1 µg/ml
- Lane 5 :** Jurkat (Human T cell lymphoblast-like cell line) Whole Cell Lysate with Chk1 (phospho S317) peptide ([ab94392](#)) at 1 µg/ml
- Lane 6 :** Ramos (Human Burkitt's lymphoma cell line) Whole Cell Lysate with Chk1 (phospho S317) peptide ([ab94392](#)) at 1 µg/ml
- Lane 7 :** HeLa (Human epithelial carcinoma cell line) Whole Cell Lysate with Chk1 peptide ([ab116584](#)) at 1 µg/ml
- Lane 8 :** Jurkat (Human T cell lymphoblast-like cell line) Whole Cell Lysate with Chk1 peptide ([ab116584](#)) at 1 µg/ml
- Lane 9 :** Ramos (Human Burkitt's lymphoma cell line) Whole Cell Lysate with Chk1 peptide ([ab116584](#)) at 1 µg/ml

Lysates/proteins at 10 µg per lane.

### Secondary

**All lanes :** Goat polyclonal to Rabbit IgG - H&L - Pre-Adsorbed (HRP) at 1/3000 dilution

Developed using the ECL technique.

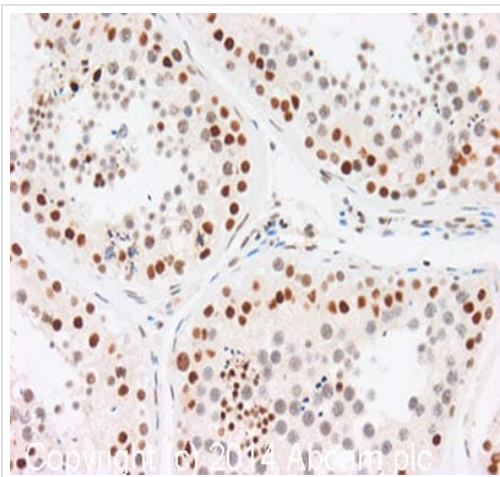
Performed under reducing conditions.

**Predicted band size:** 54 kDa

**Observed band size:** 58 kDa

**Additional bands at:** 75 kDa (possible post-translational modification)

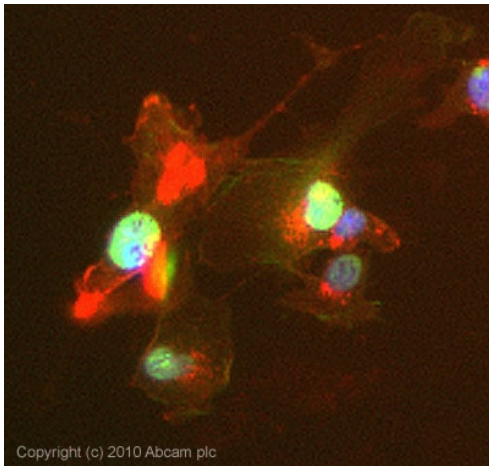
**Exposure time:** 20 minutes



Immunohistochemistry (Formalin/PFA-fixed paraffin-embedded sections) - Anti-Chk1 (phospho S317) antibody (ab59239)

IHC image of Chk1 (phospho S317) staining in human testis formalin fixed paraffin embedded tissue section, performed on a Leica Bond system using the standard protocol F. The section was pre-treated using heat mediated antigen retrieval with sodium citrate buffer (pH6, epitope retrieval solution 1) for 20 mins. The section was then incubated with ab59239, 1µg/ml, for 15 mins at room temperature and detected using an HRP conjugated compact polymer system. DAB was used as the chromogen. The section was then counterstained with haematoxylin and mounted with DPX.

For other IHC staining systems (automated and non-automated) customers should optimize variable parameters such as antigen retrieval conditions, primary antibody concentration and antibody incubation times.



Copyright (c) 2010 Abcam plc

Immunocytochemistry/ Immunofluorescence - Anti-Chk1 (phospho S317) antibody (ab59239)

ICC/IF image of ab59239 stained HepG2 cells. The cells were 4% PFA fixed (10 min) and then incubated in 1%BSA / 10% normal Goat serum / 0.3M glycine in 0.1% PBS-Tween for 1h to permeabilise the cells and block non-specific protein-protein interactions. The cells were then incubated with the antibody (ab59239, 5µg/ml) overnight at +4°C. The secondary antibody (green) was Alexa Fluor® 488 Goat anti-Rabbit IgG (H+L) used at a 1/1000 dilution for 1h. Alexa Fluor® 594 WGA was used to label plasma membranes (red) at a 1/200 dilution for 1h. DAPI was used to stain the cell nuclei (blue) at a concentration of 1.43µM. This antibody also gave a positive result in 4% PFA fixed (10 min) HeLa, Hek293, MCF-7 cells at 5µg/ml.

**Please note:** All products are "FOR RESEARCH USE ONLY. NOT FOR USE IN DIAGNOSTIC PROCEDURES"

### Our Abpromise to you: Quality guaranteed and expert technical support

- Replacement or refund for products not performing as stated on the datasheet
- Valid for 12 months from date of delivery
- Response to your inquiry within 24 hours
- We provide support in Chinese, English, French, German, Japanese and Spanish
- Extensive multi-media technical resources to help you
- We investigate all quality concerns to ensure our products perform to the highest standards

If the product does not perform as described on this datasheet, we will offer a refund or replacement. For full details of the Abpromise, please visit <https://www.abcam.co.jp/abpromise> or contact our technical team.

### Terms and conditions

- Guarantee only valid for products bought direct from Abcam or one of our authorized distributors