

Anti-Chk1 antibody [EP691Y] ab40866

リコンビナント **RabMAb**

★★★★★ **6 Abreviews** **28 References** 画像数 6

製品の概要

製品名	Anti-Chk1 antibody [EP691Y]
製品の詳細	Rabbit monoclonal [EP691Y] to Chk1
由来種	Rabbit
アプリケーション	適用あり: Flow Cyt (Intra), ICC/IF, WB, IHC-P
種交差性	交差種: Human
免疫原	Synthetic peptide within Human Chk1 aa 450-550 (C terminal). The exact sequence is proprietary.
ポジティブ・コントロール	HeLa cells lysate and human breast carcinoma.
特記事項	<p>This product is a recombinant monoclonal antibody, which offers several advantages including:</p> <ul style="list-style-type: none"> - High batch-to-batch consistency and reproducibility - Improved sensitivity and specificity - Long-term security of supply - Animal-free production <p>For more information see here.</p> <p>Our RabMAb[®] technology is a patented hybridoma-based technology for making rabbit monoclonal antibodies. For details on our patents, please refer to RabMAb[®] patents.</p> <p>Mouse, Rat: We have preliminary internal testing data to indicate this antibody may not react with these species. Please contact us for more information.</p>

製品の特性

製品の状態	Liquid
保存方法	Shipped at 4°C. Store at +4°C short term (1-2 weeks). Upon delivery aliquot. Store at -20°C. Avoid freeze / thaw cycle.
バッファー	<p>pH: 7.20</p> <p>Preservative: 0.01% Sodium azide</p> <p>Constituents: 59% PBS, 40% Glycerol (glycerin, glycerine), 0.5% BSA</p>
精製度	Protein A purified
ポリ/モノ	モノクローナル

クローン名 EP691Y
アイソタイプ IgG

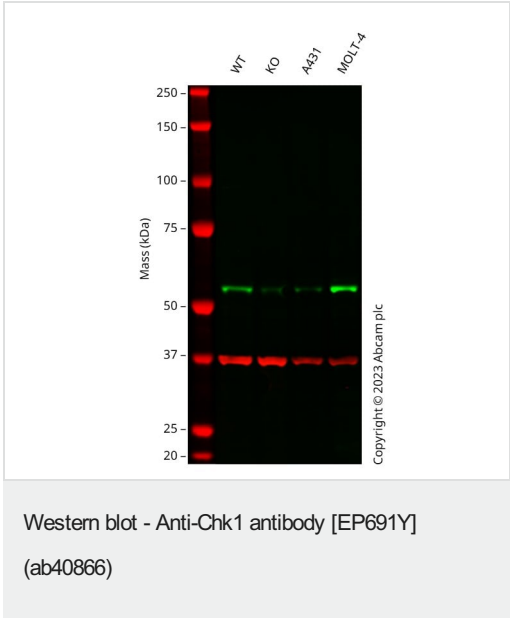
アプリケーション

The Abpromise guarantee **Abpromise保証は、** 次のテスト済みアプリケーションにおけるab40866の使用に適用されます
アプリケーションノートには、推奨の開始希釈率がありますが、適切な希釈率につきましてはご検討ください。

アプリケーション	Abreviews	特記事項
Flow Cyt (Intra)		1/1000. ab172730 - Rabbit monoclonal IgG, is suitable for use as an isotype control with this antibody.
ICC/IF		1/100 - 1/250.
WB	★★★★★ (5)	1/10000. Detects a band of approximately 54 kDa (predicted molecular weight: 54 kDa).
IHC-P	★★★★★ (1)	Use at an assay dependent concentration. Perform heat mediated antigen retrieval with citrate buffer pH 6 before commencing with IHC staining protocol.

ターゲット情報

画像



All lanes : Anti-Chk1 antibody [EP691Y] (ab40866) at 1/10000 dilution

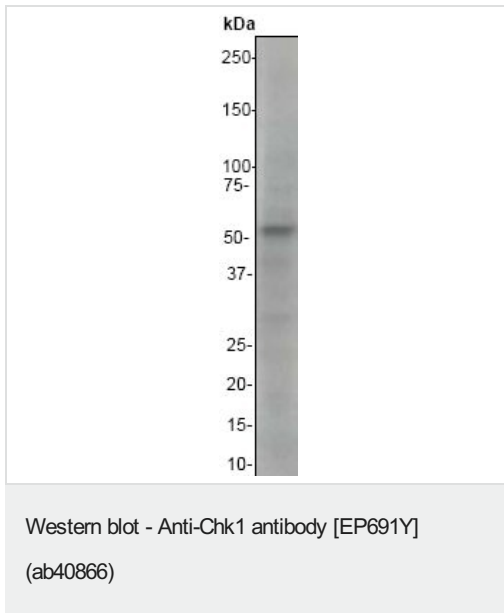
- Lane 1 :** Wild-type A549 cell lysate
- Lane 2 :** CHEK1 knockout A549 cell lysate
- Lane 3 :** A431 cell lysate
- Lane 4 :** MOLT-4 cell lysate

Lysates/proteins at 20 µg per lane.

Performed under reducing conditions.

Predicted band size: 54 kDa
Observed band size: 57 kDa

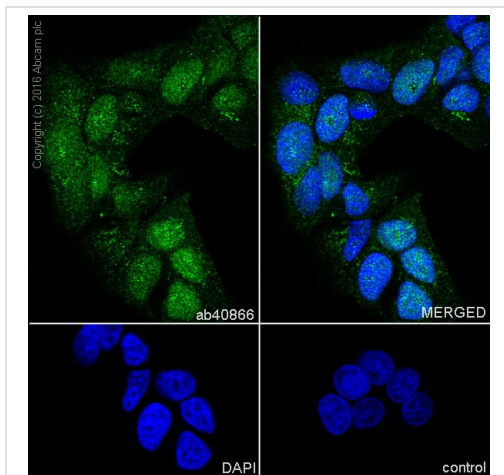
Anti-CHEK1 antibody [EP691Y] (ab40866) staining at 1/10000 dilution, shown in green; Mouse anti-GAPDH antibody [6C5] ([ab8245](#)) loading control staining at 1/20000 dilution, shown in red. In Western blot, ab40866 was shown to bind specifically to CHEK1. A band was observed at 57 kDa in wild-type A549 cell lysates with a reduction in signal observed at this size in CHEK1 heterozygous knockout cell line. To generate this image, wild-type and CHEK1 heterozygous knockout A549 cell lysates were analysed. First, samples were run on an SDS-PAGE gel then transferred onto a nitrocellulose membrane. Membranes were blocked in 3 % milk in TBS-0.1 % Tween[®] 20 (TBS-T) before incubation with primary antibodies overnight at 4 °C. Blots were washed four times in TBS-T, incubated with secondary antibodies for 1 h at room temperature, washed again four times then imaged. Secondary antibodies used were Goat anti-Rabbit IgG H&L 800CW and Goat anti-Mouse IgG H&L 680RD at 1/20000 dilution.



Anti-Chk1 antibody [EP691Y] (ab40866) at 1/10000 dilution + HeLa cell lysate at 10 µg

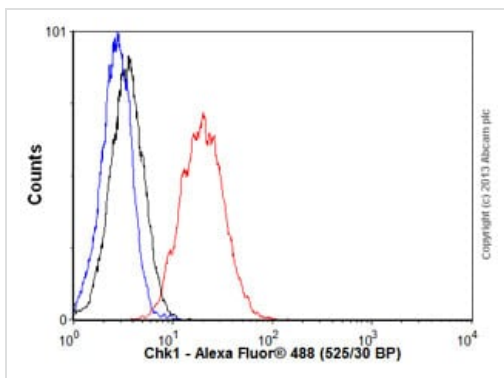
Predicted band size: 54 kDa

Observed band size: 54 kDa



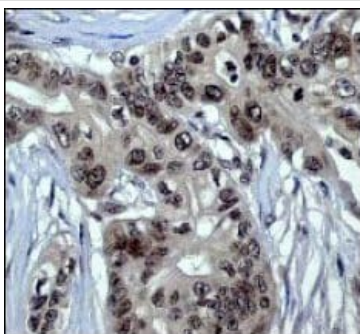
Immunocytochemistry/ Immunofluorescence - Anti-Chk1 antibody [EP691Y] (ab40866)

Immunofluorescence staining of MCF7 cells with purified ab40866 at a working dilution of 1/500, counter-stained with DAPI. The secondary antibody was an Alexa Fluor[®] 488 conjugated goat anti-rabbit (**ab150077**), used at a dilution of 1/1000. The cells were fixed in 4% PFA and permeabilized using 0.1% Triton X 100. The negative control is shown in bottom right hand panel - for the negative control, PBS was used instead of the primary antibody.



Flow Cytometry (Intracellular) - Anti-Chk1 antibody [EP691Y] (ab40866)

Overlay histogram showing HeLa cells stained with ab40866 (red line). The cells were fixed with 80% methanol (5 min) and then permeabilized with 0.1% PBS-Tween for 20 min. The cells were then incubated in 1x PBS / 10% normal goat serum / 0.3M glycine to block non-specific protein-protein interactions followed by the antibody (ab40866, 1/1000 dilution) for 30 min at 22°C. The secondary antibody used was Alexa Fluor[®] 488 goat anti-rabbit IgG (H&L) (**ab150077**) at 1/2000 dilution for 30 min at 22°C. Isotype control antibody (black line) was rabbit IgG (monoclonal) (0.1µg/1x10⁶ cells) used under the same conditions. Unlabelled sample (blue line) was also used as a control. Acquisition of >5,000 events were collected using a 20mW Argon ion laser (488nm) and 525/30 bandpass filter.




Immunohistochemistry (Formalin/PFA-fixed paraffin-embedded sections) - Anti-Chk1 antibody [EP691Y] (ab40866)


Immunohistochemical analysis of Chk1 expression in paraffin-embedded human breast carcinoma using ab40866 at a 1:250 dilution.

Perform heat mediated antigen retrieval with citrate buffer pH 6 before commencing with IHC staining protocol.


Why choose a recombinant antibody?




Research with confidence
Consistent and reproducible results



Long-term and scalable supply
Recombinant technology



Success from the first experiment
Confirmed specificity



Ethical standards compliant
Animal-free production

Anti-Chk1 antibody [EP691Y] (ab40866)

Please note: All products are "FOR RESEARCH USE ONLY. NOT FOR USE IN DIAGNOSTIC PROCEDURES"

Our Abpromise to you: Quality guaranteed and expert technical support

- Replacement or refund for products not performing as stated on the datasheet
- Valid for 12 months from date of delivery
- Response to your inquiry within 24 hours
- We provide support in Chinese, English, French, German, Japanese and Spanish
- Extensive multi-media technical resources to help you
- We investigate all quality concerns to ensure our products perform to the highest standards

If the product does not perform as described on this datasheet, we will offer a refund or replacement. For full details of the Abpromise, please visit <https://www.abcam.co.jp/abpromise> or contact our technical team.

Terms and conditions

- Guarantee only valid for products bought direct from Abcam or one of our authorized distributors