

Anti-CHD4 antibody [EPR22953-38] - ChIP Grade ab240640

リコンビナント **RabMAb**

画像数 7

製品の概要

製品名	Anti-CHD4 antibody [EPR22953-38] - ChIP Grade
製品の詳細	Rabbit monoclonal [EPR22953-38] to CHD4 - ChIP Grade
由来種	Rabbit
アプリケーション	適用あり: IP, Flow Cyt (Intra), WB, ICC/IF, ChIP 適用なし: IHC-P
種交差性	交差種: Mouse, Human
免疫原	Synthetic peptide. This information is proprietary to Abcam and/or its suppliers.
ポジティブ・コントロール	WB: NCCIT, K562, HeLa, HEK-293 and RAW264.7 lysates. ICC/IF: HeLa and NIH/3T3 cells. Flow Cyt (intra): HeLa cells. IP: NCCIT cells. ChIP: Chromatin prepared from K562 cells.
特記事項	This product is a recombinant monoclonal antibody, which offers several advantages including: <ul style="list-style-type: none"> - High batch-to-batch consistency and reproducibility - Improved sensitivity and specificity - Long-term security of supply - Animal-free production For more information see here . Our RabMAb [®] technology is a patented hybridoma-based technology for making rabbit monoclonal antibodies. For details on our patents, please refer to RabMAb[®] patents .

製品の特性

製品の状態	Liquid
保存方法	Shipped at 4°C. Store at +4°C short term (1-2 weeks). Upon delivery aliquot. Store at -20°C long term. Avoid freeze / thaw cycle.
バッファー	pH: 7.2 Preservative: 0.01% Sodium azide Constituents: PBS, 40% Glycerol (glycerin, glycerine), 0.05% BSA
精製度	Protein A purified
ポリ/モノ	モノクローナル
クローン名	EPR22953-38

アイソタイプIgG

アプリケーション

The Abpromise guarantee **Abpromise保証は、** 次のテスト済みアプリケーションにおけるab240640の使用に適用されます
アプリケーションノートには、推奨の開始希釈率がありますが、適切な希釈率につきましてはご検討ください。

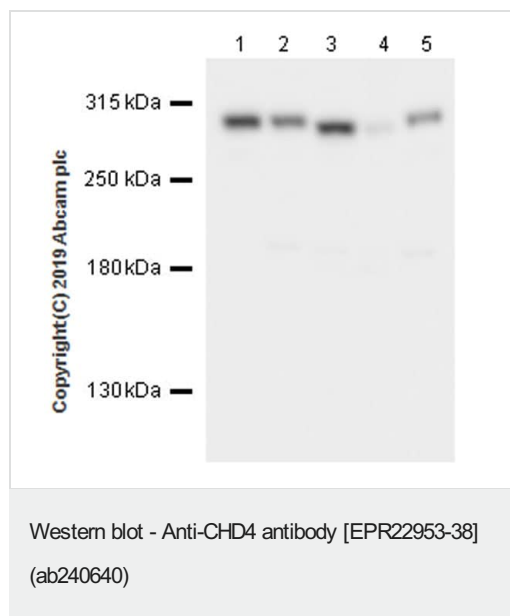
アプリケーション	Abreviews	特記事項
IP		1/30.
Flow Cyt (Intra)		1/600.
WB		1/1000. Predicted molecular weight: 218 kDa.
ICC/IF		1/500.
ChIP		Use 5 µg for 25 µg of chromatin.

追加情報 Is unsuitable for IHC-P.

ターゲット情報

機能	Component of the histone deacetylase NuRD complex which participates in the remodeling of chromatin by deacetylating histones.
配列類似性	Belongs to the SNF2/RAD54 helicase family. Contains 2 chromo domains. Contains 1 helicase ATP-binding domain. Contains 1 helicase C-terminal domain. Contains 2 PHD-type zinc fingers.
翻訳後修飾	Phosphorylated upon DNA damage, probably by ATM or ATR.
細胞内局在	Nucleus. Cytoplasm > cytoskeleton > centrosome. Associates with centrosomes in interphase.

画像



All lanes : Anti-CHD4 antibody [EPR22953-38] - ChIP Grade (ab240640) at 1/1000 dilution

Lane 1 : NCCIT (human pluripotent embryonic carcinoma epithelial cell), whole cell lysate

Lane 2 : K562 (human chronic myelogenous leukemia lymphoblast), whole cell lysate

Lane 3 : HeLa (human cervix adenocarcinoma epithelial cell), whole cell lysate

Lane 4 : HEK-293 (human embryonic kidney epithelial cell), whole cell lysate

Lane 5 : RAW264.7 (mouse Abelson murine leukemia virus-induced tumor macrophage), whole cell lysate

Lysates/proteins at 20 µg per lane.

Secondary

All lanes : Goat Anti-Rabbit IgG H&L (HRP) ([ab97051](#)) at 1/100000 dilution

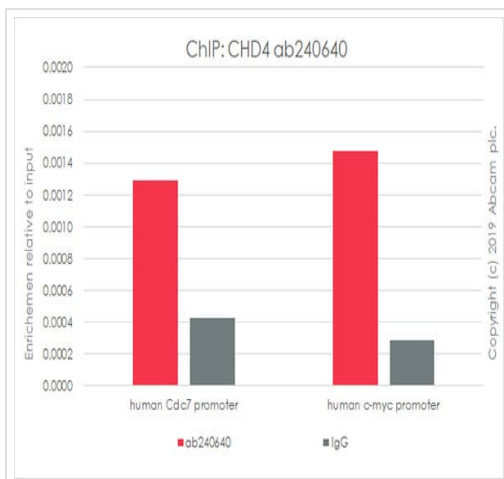
Predicted band size: 218 kDa

Observed band size: 280 kDa

Blocking and diluting buffer and concentration: 5% NFDM/TBST.

The expression profile/ molecular weight observed is consistent with what has been described in the literature (PMID: PMID: 28572115) .

Exposure time: 1 second.



ChIP - Anti-CHD4 antibody [EPR22953-38]
(ab240640)

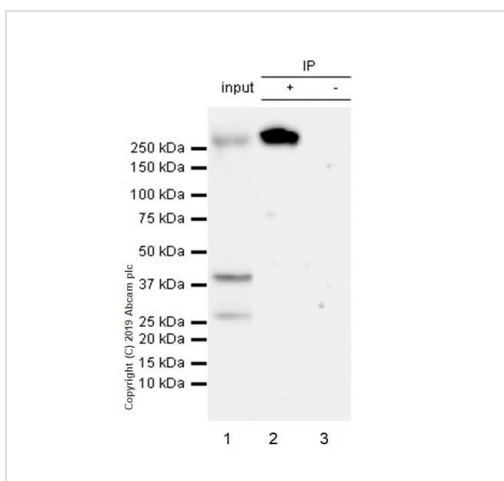
Chromatin was prepared from K-562 cells according to the Abcam Dual-X-ChIP protocol*. Cells were fixed with 1.5 mM EGS for 30mins and then formaldehyde for 10min.

The ChIP was performed with 25 µg of chromatin, 5 µg of ab240640 (red), or 5 µg of rabbit normal IgG **ab172730** (gray) and 20 µl of Protein A/G sepharose beads. The immunoprecipitated DNA was quantified by real time PCR (Taqman approach for active and inactive loci, Sybr green approach for heterochromatic loci).

Primers and probes are from paper PMID: 23505388.

*<http://www.abcam.com/resources?>

keywords=X%20ChIP%20protocol



Immunoprecipitation - Anti-CHD4 antibody
[EPR22953-38] (ab240640)

CHD4 was immunoprecipitated from 0.35 mg NCCIT (Human pluripotent embryonic carcinoma epithelial cell) whole cell lysate 10ug with ab240640 at 1/30 dilution (2ug in 0.35mg lysates). Western blot was performed on the immunoprecipitate using ab240640 at 1/1000 dilution. VeriBlot for IP Detection Reagent (HRP) (**ab131366**) was used at 1/5000 dilution.

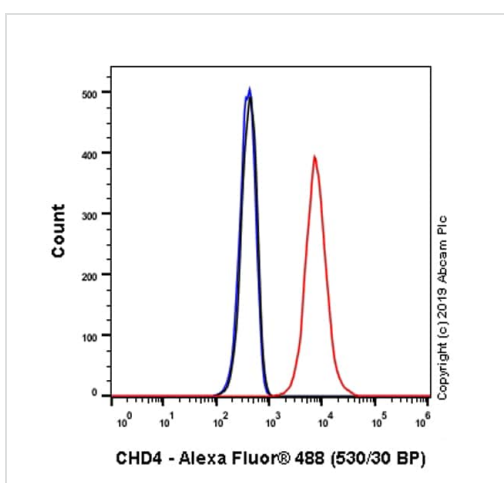
Lane 1: NCCIT whole cell lysate 10ug.

Lane 2: ab240640 IP in NCCIT whole cell lysate.

Lane 3: Rabbit monoclonal IgG (**ab172730**) instead of ab240640 in NCCIT whole cell lysate.

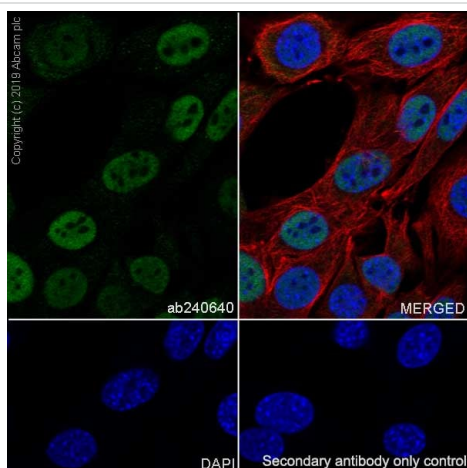
Blocking and dilution buffer and concentration: 5% NFDM/TBST.

Exposure time: 3 min.



Flow Cytometry (Intracellular) - Anti-CHD4 antibody
[EPR22953-38] - ChIP Grade (ab240640)

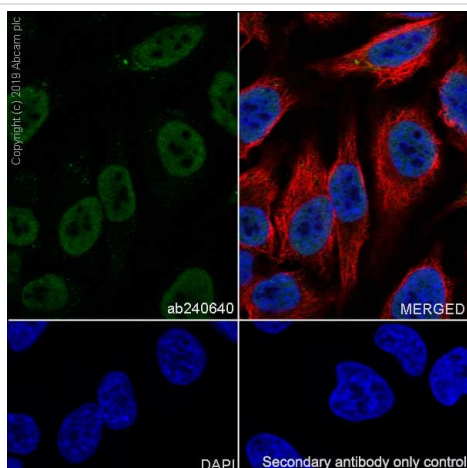
Intracellular flow cytometric analysis of 4% paraformaldehyde fixed 90% methanol permeabilized HeLa (Human cervix adenocarcinoma epithelial cell) cells labelling CHD4 with ab240640 at 1/600 dilution (Red) compared with a Rabbit monoclonal IgG (**ab172730**) / Black isotype control and an unlabeled control (cells without incubation with primary antibody and secondary antibody) (Blue). A Goat anti rabbit IgG (Alexa Fluor® 488, **ab150077**) at 1/2000 was used as the secondary antibody.



Immunocytochemistry/ Immunofluorescence - Anti-CHD4 antibody [EPR22953-38] (ab240640)

Immunofluorescent analysis of 4% Paraformaldehyde-fixed, 0.1% TritonX-100 permeabilized NIH/3T3 (mouse embryonic fibroblast) cells labeling CHD4 with ab240640 at 1/500 dilution, followed by **ab150077** AlexaFluor®488 Goat anti-Rabbit secondary antibody at 1/1000 dilution (Green). Confocal image showing strong nuclear staining and weak cytoplasmic staining in NIH/3T3 cell line is observed. **ab195889** Anti-alpha Tubulin antibody [DM1A] - Microtubule Marker (Alexa Fluor® 594) was used to counterstain tubulin at 1/200 dilution (Red). The nuclear counterstain was DAPI (Blue).

Secondary antibody only control: Secondary antibody is **ab150077** AlexaFluor®488 Goat anti-Rabbit secondary at 1/1000 dilution.



Immunocytochemistry/ Immunofluorescence - Anti-CHD4 antibody [EPR22953-38] (ab240640)

Immunofluorescent analysis of 4% Paraformaldehyde-fixed, 0.1% TritonX-100 permeabilized HeLa (human cervix adenocarcinoma epithelial cell) cells labeling CHD4 with ab240640 at 1/500 dilution, followed by **ab150077** AlexaFluor®488 Goat anti-Rabbit secondary antibody at 1/1000 dilution (Green). Confocal image showing strong nuclear staining and weak cytoplasmic staining in HeLa cell line is observed. **ab195889** Anti-alpha Tubulin antibody [DM1A] - Microtubule Marker (Alexa Fluor® 594) was used to counterstain tubulin at 1/200 dilution (Red). The nuclear counterstain was DAPI (Blue).

Secondary antibody only control: Secondary antibody is **ab150077** AlexaFluor®488 Goat anti-Rabbit secondary at 1/1000 dilution.

Why choose a recombinant antibody?



Research with confidence
Consistent and reproducible results



Long-term and scalable supply
Recombinant technology



Success from the first experiment
Confirmed specificity



Ethical standards compliant
Animal-free production

Anti-CHD4 antibody [EPR22953-38] - ChIP Grade (ab240640)

Please note: All products are "FOR RESEARCH USE ONLY. NOT FOR USE IN DIAGNOSTIC PROCEDURES"

Our Abpromise to you: Quality guaranteed and expert technical support

- Replacement or refund for products not performing as stated on the datasheet
- Valid for 12 months from date of delivery
- Response to your inquiry within 24 hours
- We provide support in Chinese, English, French, German, Japanese and Spanish
- Extensive multi-media technical resources to help you
- We investigate all quality concerns to ensure our products perform to the highest standards

If the product does not perform as described on this datasheet, we will offer a refund or replacement. For full details of the Abpromise, please visit <https://www.abcam.co.jp/abpromise> or contact our technical team.

Terms and conditions

- Guarantee only valid for products bought direct from Abcam or one of our authorized distributors