

# Anti-CEP295 antibody ab122490

**6 References** [画像数 3](#)

### 製品の概要

---

製品名	Anti-CEP295 antibody
製品の詳細	Rabbit polyclonal to CEP295
由来種	Rabbit
アプリケーション	<b>適用あり:</b> IHC-P, WB, ICC/IF
種交差性	<b>交差種:</b> Human
免疫原	Recombinant fragment corresponding to Human CEP295 aa 1877-1978.
ポジティブ・コントロール	ICC/IF: U-2 OS cells. WB: Human liver lysate. IHC-P: Human prostate tissue.
特記事項	<p>The Life Science industry has been in the grips of a reproducibility crisis for a number of years. Abcam is leading the way in addressing this with our range of recombinant monoclonal antibodies and knockout edited cell lines for gold-standard validation. Please check that this product meets your needs before purchasing.</p> <p>If you have any questions, special requirements or concerns, please send us an inquiry and/or contact our Support team ahead of purchase. Recommended alternatives for this product can be found below, along with publications, customer reviews and Q&amp;As</p>

### 製品の特性

---

製品の状態	Liquid
保存方法	Shipped at 4°C. Store at -20°C or -80°C. Avoid freeze / thaw cycle. Store undiluted.
バッファー	pH: 7.20 Preservative: 0.02% Sodium azide Constituents: 59% PBS, 40% Glycerol (glycerin, glycerine)
精製度	Immunogen affinity purified
ポリ/モノ	ポリクローナル
アイソタイプ	IgG

### アプリケーション

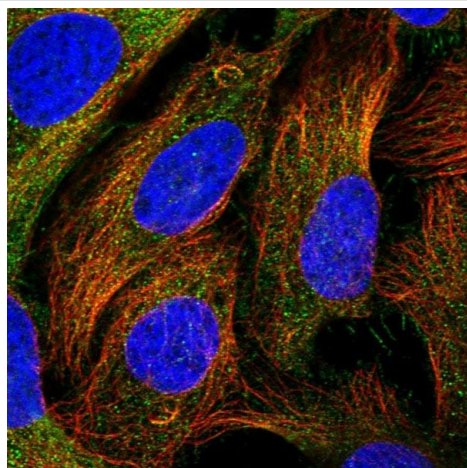
---

**The Abpromise guarantee**      **Abpromise保証は、次のテスト済みアプリケーションにおけるab122490の使用に適用されます**  
アプリケーションノートには、推奨の開始希釈率がありますが、適切な希釈率につきましてはご検討ください。

アプリケーション	Abreviews	特記事項
IHC-P		1/200 - 1/500. Perform heat mediated antigen retrieval with citrate buffer pH 6 before commencing with IHC staining protocol.
WB		1/250 - 1/500.
ICC/IF		Use a concentration of 0.25 - 2 µg/ml.

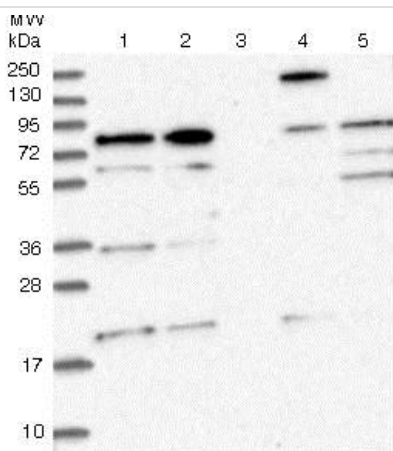
## ターゲット情報

## 画像



Immunocytochemistry/Immunofluorescence analysis of U-2 OS cells labeling CEP295 with **ab12249** shows positivity in the plasma membrane and cytoplasm.

Immunocytochemistry/ Immunofluorescence - Anti-CEP295 antibody (ab122490)



**All lanes** : Anti-CEP295 antibody (ab122490) at 1/250 dilution

**Lane 1** : RT 4 cell lysate

**Lane 2** : U 251 MG cell lysate

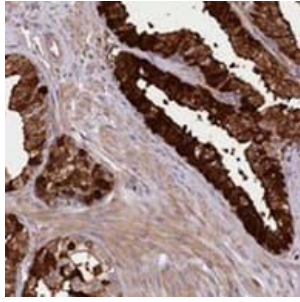
**Lane 3** : Human Plasma lysate

**Lane 4** : Human Liver lysate

**Lane 5** : Human Tonsil lysate

Developed using the ECL technique.

Western blot - Anti-CEP295 antibody (ab122490)



ab122490 at 1/200 dilution staining CEP295 in paraffin-embedded human prostate tissue by Immunohistochemistry.

Immunohistochemistry (Formalin/PFA-fixed paraffin-embedded sections) - Anti-CEP295 antibody (ab122490)

**Please note:** All products are "FOR RESEARCH USE ONLY. NOT FOR USE IN DIAGNOSTIC PROCEDURES"

### **Our Abpromise to you: Quality guaranteed and expert technical support**

---

- Replacement or refund for products not performing as stated on the datasheet
- Valid for 12 months from date of delivery
- Response to your inquiry within 24 hours
  
- We provide support in Chinese, English, French, German, Japanese and Spanish
- Extensive multi-media technical resources to help you
- We investigate all quality concerns to ensure our products perform to the highest standards

If the product does not perform as described on this datasheet, we will offer a refund or replacement. For full details of the Abpromise, please visit <https://www.abcam.co.jp/abpromise> or contact our technical team.

### **Terms and conditions**

---

- Guarantee only valid for products bought direct from Abcam or one of our authorized distributors