

Anti-Cellubrevin antibody ab2102

★★★★★ [3 Abreviews](#) [2 References](#) [画像数 1](#)

製品の概要

製品名	Anti-Cellubrevin antibody
製品の詳細	Rabbit polyclonal to Cellubrevin
由来種	Rabbit
特異性	Reacts specifically with 10kDa protein of rat CP12 cell extract.
アプリケーション	適用あり: ICC/IF
種交差性	交差種: Mouse 非交差種: Dog, Human
免疫原	Synthetic peptide corresponding to Rat Cellubrevin. 15 residue N-terminal synthetic peptide Database link: P63025
特記事項	<p>The Life Science industry has been in the grips of a reproducibility crisis for a number of years. Abcam is leading the way in addressing this with our range of recombinant monoclonal antibodies and knockout edited cell lines for gold-standard validation. Please check that this product meets your needs before purchasing.</p> <p>If you have any questions, special requirements or concerns, please send us an inquiry and/or contact our Support team ahead of purchase. Recommended alternatives for this product can be found below, along with publications, customer reviews and Q&As</p>

製品の特性

製品の状態	Liquid
保存方法	Shipped at 4°C. Store at +4°C short term (1-2 weeks). Upon delivery aliquot. Store at -20°C or -80°C. Avoid freeze / thaw cycle.
バッファー	Constituent: Whole serum
精製度	Whole antiserum
ポリ/モノ	ポリクローナル
アイソタイプ	IgG

アプリケーション

The Abpromise guarantee

Abpromise保証は、 次のテスト済みアプリケーションにおけるab2102の使用に適用されます

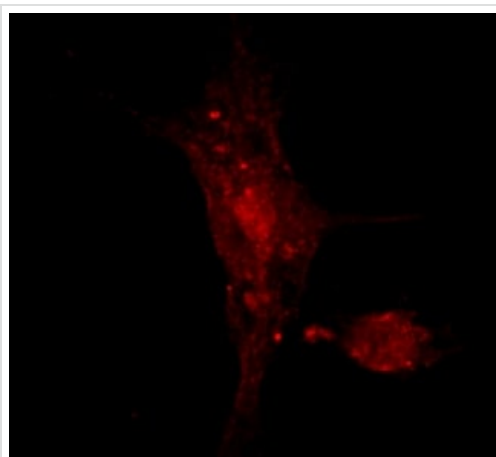
アプリケーションノートには、推奨の開始希釈率がありますが、適切な希釈率につきましてはご確認ください。

アプリケーション	Abreviews	特記事項
ICC/IF	★★★★★ (1)	Use at an assay dependent concentration.

ターゲット情報

機能	SNARE involved in vesicular transport from the late endosomes to the trans-Golgi network.
配列類似性	Belongs to the synaptobrevin family. Contains 1 v-SNARE coiled-coil homology domain.
翻訳後修飾	Phosphorylated upon DNA damage, probably by ATM or ATR.
細胞内局在	Membrane. Cell junction > synapse > synaptosome.

画像



This picture was kindly supplied as part of the review submitted by Jennifer Chua . The image shows staining in the perinuclear region and in the peripheral endosomal structures of RAW 264.7 cells stained with ab2102 (at a dilution of 1/50 with a secondary antibody conjugated with Alexa 568).

Immunocytochemistry/ Immunofluorescence - Anti-Cellubrevin antibody (ab2102)

Please note: All products are "FOR RESEARCH USE ONLY. NOT FOR USE IN DIAGNOSTIC PROCEDURES"

Our Abpromise to you: Quality guaranteed and expert technical support

- Replacement or refund for products not performing as stated on the datasheet
- Valid for 12 months from date of delivery
- Response to your inquiry within 24 hours
- We provide support in Chinese, English, French, German, Japanese and Spanish
- Extensive multi-media technical resources to help you
- We investigate all quality concerns to ensure our products perform to the highest standards

If the product does not perform as described on this datasheet, we will offer a refund or replacement. For full details of the Abpromise,

please visit <https://www.abcam.co.jp/abpromise> or contact our technical team.

Terms and conditions

- Guarantee only valid for products bought direct from Abcam or one of our authorized distributors