

Anti-CEACAM5 antibody [26/3/13] - BSA and Azide free ab4451

★ ★ ★ ★ ★ [2 Abreviews](#) [12 References](#) [画像数 2](#)

製品の概要

製品名	Anti-CEACAM5 antibody [26/3/13] - BSA and Azide free
製品の詳細	Mouse monoclonal [26/3/13] to CEACAM5 - BSA and Azide free
由来種	Mouse
特異性	This antibody recognises exclusively CEACAM 5 transiently expressed on the cell surface of transfected BOSC cells. It can be used to distinguish CEACAM 5 from all other CEACAM and probably all pregnancy-specific glycoproteins molecules, namely CEACAM 1 (BGP/CD66a), CEACAM 3 (CGM1/CD66d), CEACAM 4 (CGM7), CEACAM 6 (NCA/CD66c), CEACAM 7 (CGM2), CEACAM 8 (CGM6/CD66b) and PSG1 (CD66f) based on its reactivity pattern with stable HeLa transfectants expressing individual CEA family members. This antibody was included and characterized in the studies from the Vth Leucocyte Typing Workshop (Grunert F <i>et al.</i> 1994)
アプリケーション	適用あり: IHC-P, Sandwich ELISA
種交差性	交差種: Human
免疫原	Full length native protein (partially purified) (Human) from a perchloric acid extract from liver metastases of colonic tumors (Grunert F, <i>et al.</i> 1985)
ポジティブ・コントロール	IHC-P: human normal colon tissue sections
特記事項	Antibodies produced from cDNA: Conventional technologies usually either generate antibodies against purified proteins, or against synthetic peptides based on amino acid sequences derived from DNA sequence data. Genetic immunization involves introducing the gene in the form of a cDNA directly into an animal which translates this cDNA into protein thus stimulating an immune response against the foreign protein. Although the synthetic peptide approach is comparable in speed, the quality of antibodies generated by genetic immunization is far superior. This is because the protein is made by the immunized animal, utilizing complex cellular mechanisms that allow it to gain a native conformation. Antibodies are then generated against a native protein, such as is found in the blood or tissues of its host species. Membrane-bound or secreted proteins often create problems for conventional antibody technology because in their native form, they are often modified by glycosylation, or in some cases exist as multiple membrane-spanning proteins that are not soluble following isolation or synthesis in recombinant systems. All of these problems are avoided if the immunized animal makes the protein itself. Antibodies generated by genetic immunization have been shown to have binding affinities to the protein in the sub-nanomolar range, which are approximately 100x higher than conventionally developed antibodies and much higher than single chain antibodies. Results confirm published data for much higher avidity of sera generated by genetic immunization as compared with that gained by

immunization with a corresponding recombinant protein.

The Life Science industry has been in the grips of a reproducibility crisis for a number of years. Abcam is leading the way in addressing this with our range of recombinant monoclonal antibodies and knockout edited cell lines for gold-standard validation. Please check that this product meets your needs before purchasing.

If you have any questions, special requirements or concerns, please send us an inquiry and/or contact our Support team ahead of purchase. Recommended alternatives for this product can be found below, along with publications, customer reviews and Q&As

製品の特性

製品の状態	Liquid
保存方法	Shipped at 4°C. Store at +4°C short term (1-2 weeks). Store at -20°C or -80°C. Avoid freeze / thaw cycle.
バッファー	pH: 7.20 Constituent: PBS
キャリア・フリー	はい
精製度	Protein G purified
ポリ/モノ	モノクローナル
クローン名	26/3/13
アイソタイプ	IgG1

アプリケーション

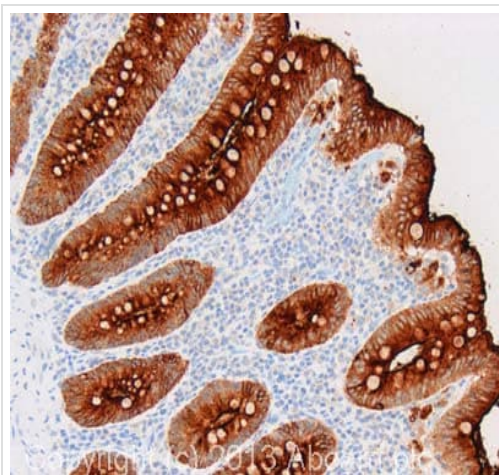
The Abpromise guarantee **Abpromise保証は、次のテスト済みアプリケーションにおけるab4451の使用に適用されます**
アプリケーションノートには、推奨の開始希釈率がありますが、適切な希釈率につきましてはご確認ください。

アプリケーション	Abreviews	特記事項
IHC-P	★☆☆☆☆ (1)	Use a concentration of 5 µg/ml. Perform heat mediated antigen retrieval with citrate buffer pH 6 before commencing with IHC staining protocol.
Sandwich ELISA		Use a concentration of 0.2 µg/ml. For sandwich ELISA, use this antibody as Capture at 0.2µg/ml

ターゲット情報

機能	Cell surface glycoprotein that plays a role in cell adhesion and in intracellular signaling. Receptor for E.coli Dr adhesins.
組織特異性	Found in adenocarcinomas of endodermally derived digestive system epithelium and fetal colon.
配列類似性	Belongs to the immunoglobulin superfamily. CEA family. Contains 7 Ig-like (immunoglobulin-like) domains.
翻訳後修飾	Complex immunoreactive glycoprotein with a MW of 180 kDa comprising 60% carbohydrate.

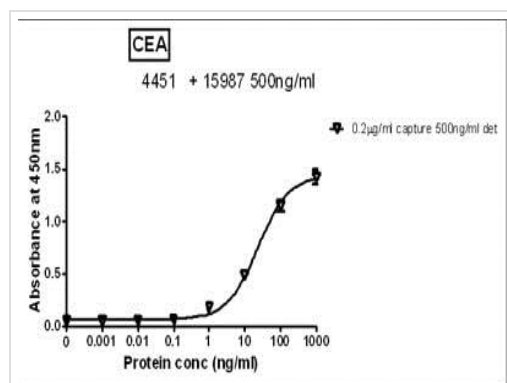
画像



Immunohistochemistry (Formalin/PFA-fixed paraffin-embedded sections) - Anti-CEACAM5 antibody
[26/3/13] - BSA and Azide free (ab4451)

IHC image of Carcino Embryonic Antigen CEA staining in human normal colon formalin fixed paraffin embedded tissue section, performed on a Leica Bond™ system using the standard protocol F. The section was pre-treated using heat mediated antigen retrieval with sodium citrate buffer (pH6, epitope retrieval solution 1) for 20 mins. The section was then incubated with ab4451, 5µg/ml, for 15 mins at room temperature and detected using an HRP conjugated compact polymer system. DAB was used as the chromogen. The section was then counterstained with haematoxylin and mounted with DPX.

For other IHC staining systems (automated and non-automated) customers should optimize variable parameters such as antigen retrieval conditions, primary antibody concentration and antibody incubation times.



Sandwich ELISA - Anti-CEACAM5 antibody
[26/3/13] - BSA and Azide free (ab4451)

Standard Curve for Carcino Embryonic Antigen CEA dilution range 1pg/ml to 1ug/ml using Capture Antibody Mouse monoclonal [26/3/13] to Carcino Embryonic Antigen CEA (ab4451) at 0.2ug/ml and Detector Antibody Rabbit polyclonal to Carcino Embryonic Antigen CEA (**ab15987**) at 0.5ug/ml.

Please note: All products are "FOR RESEARCH USE ONLY. NOT FOR USE IN DIAGNOSTIC PROCEDURES"

Our Abpromise to you: Quality guaranteed and expert technical support

- Replacement or refund for products not performing as stated on the datasheet
- Valid for 12 months from date of delivery
- Response to your inquiry within 24 hours
- We provide support in Chinese, English, French, German, Japanese and Spanish
- Extensive multi-media technical resources to help you
- We investigate all quality concerns to ensure our products perform to the highest standards

If the product does not perform as described on this datasheet, we will offer a refund or replacement. For full details of the Abpromise, please visit <https://www.abcam.co.jp/abpromise> or contact our technical team.

Terms and conditions

- Guarantee only valid for products bought direct from Abcam or one of our authorized distributors