

Anti-CDw75 antibody [LN-1] ab233965

画像数 2

製品の概要

製品名	Anti-CDw75 antibody [LN-1]
製品の詳細	Mouse monoclonal [LN-1] to CDw75
由来種	Mouse
アプリケーション	適用あり: Flow Cyt, IHC-P
種交差性	交差種: Human
免疫原	Tissue, cells or virus corresponding to CDw75. (Nuclei from pokeweed mitogen-stimulated peripheral blood lymphocytes).
ポジティブ・コントロール	IHC-P: Human spleen tissue. Flow Cytometry: Human lymphocytes.
特記事項	<p>The Life Science industry has been in the grips of a reproducibility crisis for a number of years. Abcam is leading the way in addressing this with our range of recombinant monoclonal antibodies and knockout edited cell lines for gold-standard validation. Please check that this product meets your needs before purchasing.</p> <p>If you have any questions, special requirements or concerns, please send us an inquiry and/or contact our Support team ahead of purchase. Recommended alternatives for this product can be found below, along with publications, customer reviews and Q&As</p>

製品の特性

製品の状態	Liquid
保存方法	Shipped at 4°C. Store at +4°C short term (1-2 weeks). Upon delivery aliquot. Store at -20°C long term. Avoid freeze / thaw cycle.
バッファー	<p>pH: 7.2</p> <p>Preservative: 0.05% Sodium azide</p> <p>Constituents: PBS, 0.05% BSA</p>
特記事項(精製)	Purified from bioreactor concentrate by PEG precipitation.
ポリ/モノ	モノクローナル
クローン名	LN-1
アイソタイプ	IgM
軽鎖の種類	kappa

アプリケーション

The Abpromise guarantee Abpromise保証は、 次のテスト済みアプリケーションにおけるab233965の使用に適用されます
アプリケーションノートには、推奨の開始希釈率がありますが、適切な希釈率につきましてはご検討ください。

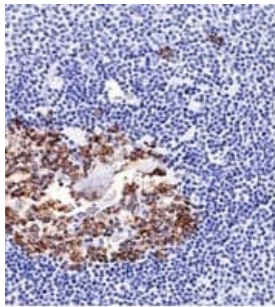
アプリケーション	Abreviews	特記事項
Flow Cyt		Use 1-2µg for 10 ⁶ cells.
IHC-P		Use a concentration of 1 - 2 µg/ml. Staining of formalin-fixed tissues requires boiling tissue sections in 10 mM citrate buffer, pH 6.0, for 10-20 minutes followed by cooling at RT for 20 minutes. Incubate with primary antibody for 30 minutes at RT.

ターゲット情報

関連性 CDw75 is a type II membrane protein that catalyzes the transfer of sialic acid from CMP-sialic acid to galactose-containing substrates. The encoded protein, which is normally found in the Golgi but which can be proteolytically processed to a soluble form, is involved in the generation of the cell-surface carbohydrate determinants and differentiation antigens HB-6, CDw75, and CD76. This protein is a member of glycosyltransferase family 29. Three transcript variants encoding two different isoforms have been found for this gene.

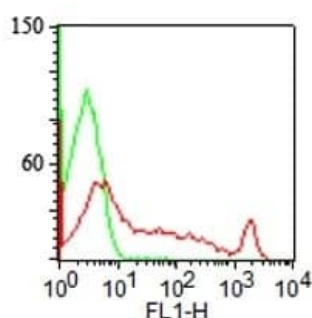
細胞内局在 Golgi Apparatus; Golgi stack; Golgi stack membrane; single-pass type II membrane protein. Membrane-bound form in trans cisternae of Golgi. Secreted protein; body fluid.

画像



Formalin-fixed, paraffin-embedded human spleen tissue stained for CDw75 using ab233965 at 1 µg/ml in immunohistochemical analysis.

Immunohistochemistry (Formalin/PFA-fixed paraffin-embedded sections) - Anti-CDw75 antibody [LN-1] (ab233965)



Flow Cytometry - Anti-CDw75 antibody [LN-1]
(ab233965)

Flow cytometric analysis of human lymphocytes labeling CDw75 with ab233965 at $1 \mu\text{g}/10^6$ cells (red), compared to an isotype control (green). PPI negative population analyzed. Surface staining.

Please note: All products are "FOR RESEARCH USE ONLY. NOT FOR USE IN DIAGNOSTIC PROCEDURES"

Our Abpromise to you: Quality guaranteed and expert technical support

- Replacement or refund for products not performing as stated on the datasheet
- Valid for 12 months from date of delivery
- Response to your inquiry within 24 hours
- We provide support in Chinese, English, French, German, Japanese and Spanish
- Extensive multi-media technical resources to help you
- We investigate all quality concerns to ensure our products perform to the highest standards

If the product does not perform as described on this datasheet, we will offer a refund or replacement. For full details of the Abpromise, please visit <https://www.abcam.co.jp/abpromise> or contact our technical team.

Terms and conditions

- Guarantee only valid for products bought direct from Abcam or one of our authorized distributors