


Anti-Cdk6 antibody ab151247

★★★★★ **2 Abreviews** **57 References** 画像数 3

製品の概要

製品名	Anti-Cdk6 antibody
製品の詳細	Rabbit polyclonal to Cdk6
由来種	Rabbit
アプリケーション	適用あり: WB, IHC-P, ICC/IF
種交差性	交差種: Human 交差が予測される動物種: Mouse, Rat, Chicken, Cow 
免疫原	Recombinant fragment, corresponding to a region within amino acids 35-309 of Human Cdk6 (UniProt Q00534).
ポジティブ・コントロール	293T, A431, H1299, HeLa, HepG2, MOLT4 and Raji whole cell lysates; HeLa cells; Human SW480 xenograft tissue.
特記事項	<p>The Life Science industry has been in the grips of a reproducibility crisis for a number of years. Abcam is leading the way in addressing this with our range of recombinant monoclonal antibodies and knockout edited cell lines for gold-standard validation. Please check that this product meets your needs before purchasing.</p> <p>If you have any questions, special requirements or concerns, please send us an inquiry and/or contact our Support team ahead of purchase. Recommended alternatives for this product can be found below, along with publications, customer reviews and Q&As</p>

製品の特性

製品の状態	Liquid
保存方法	Shipped at 4°C. Upon delivery aliquot. Store at -20°C or -80°C. Avoid freeze / thaw cycle.
バッファー	pH: 7.00 Preservative: 0.025% Proclin 300 Constituents: 79% PBS, 20% Glycerol (glycerin, glycerine)
精製度	Immunogen affinity purified
ポリ/モノ	ポリクローナル
アイソタイプ	IgG

アプリケーション

The Abpromise guarantee

Abpromise保証は、次のテスト済みアプリケーションにおけるab151247の使用に適用されます
アプリケーションノートには、推奨の開始希釈率がありますが、適切な希釈率につきましてはご確認ください。

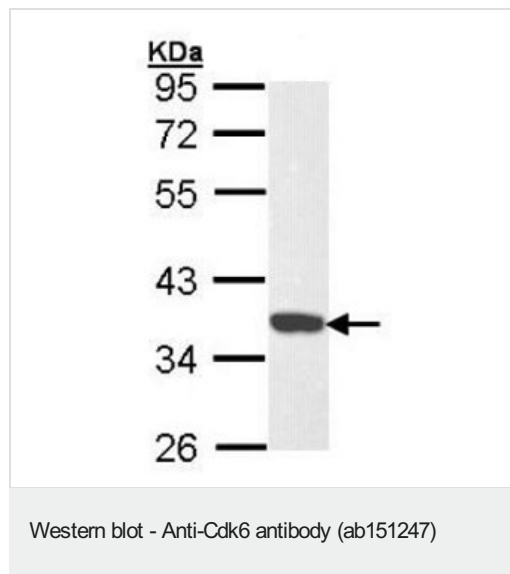
アプリケーション	Abreviews	特記事項
WB	★★★★★ (2)	1/500 - 1/3000. Predicted molecular weight: 37 kDa.
IHC-P		1/100 - 1/1000. Perform heat mediated antigen retrieval with citrate buffer pH 6 before commencing with IHC staining protocol.
ICC/IF		1/100 - 1/1000.

ターゲット情報

機能 Probably involved in the control of the cell cycle. Interacts with D-type G1 cyclins.

配列類似性 Belongs to the protein kinase superfamily. CMGC Ser/Thr protein kinase family. CDC2/CDKX subfamily.
Contains 1 protein kinase domain.

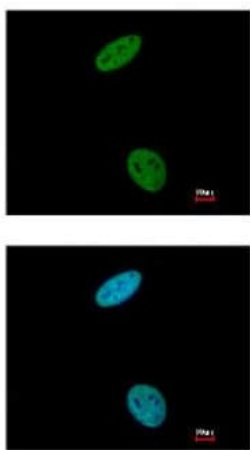
画像



Anti-Cdk6 antibody (ab151247) at 1/1000 dilution + HeLa whole cell lysate at 30 µg

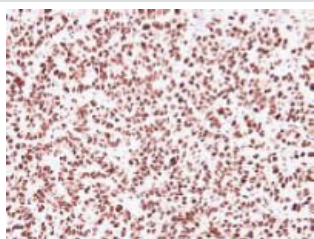
Predicted band size: 37 kDa

10% SDS PAGE



Immunofluorescent analysis of paraformaldehyde-fixed HeLa cells labeling PPIH with ab151247 at 1/200 dilution. Lower image shows cells co-stained with Hoechst 33342.

Immunocytochemistry/ Immunofluorescence - Anti-Cdk6 antibody (ab151247)



Immunohistochemical analysis of paraffin-embedded Human SW480 xenograft tissue labeling Cdk6 with ab151247 at 1/500 dilution.

Immunohistochemistry (Formalin/PFA-fixed paraffin-embedded sections) - Anti-Cdk6 antibody (ab151247)

Please note: All products are "FOR RESEARCH USE ONLY. NOT FOR USE IN DIAGNOSTIC PROCEDURES"

Our Abpromise to you: Quality guaranteed and expert technical support

- Replacement or refund for products not performing as stated on the datasheet
- Valid for 12 months from date of delivery
- Response to your inquiry within 24 hours
- We provide support in Chinese, English, French, German, Japanese and Spanish
- Extensive multi-media technical resources to help you

- We investigate all quality concerns to ensure our products perform to the highest standards

If the product does not perform as described on this datasheet, we will offer a refund or replacement. For full details of the Abpromise, please visit <https://www.abcam.co.jp/abpromise> or contact our technical team.

Terms and conditions

- Guarantee only valid for products bought direct from Abcam or one of our authorized distributors