

Anti-Cdk6 antibody [98D] ab241554

KO 評価済 リコンビナント

4 References 画像数 4

製品の概要

製品名	Anti-Cdk6 antibody [98D]
製品の詳細	Mouse monoclonal [98D] to Cdk6
由来種	Mouse
アプリケーション	適用あり: WB 適用なし: ICC/IF
種交差性	交差種: Mouse, Rat, Human
免疫原	Recombinant fragment within Mouse Cdk6 aa 1-350. The exact immunogen sequence used to generate this antibody is proprietary information. If additional detail on the immunogen is needed to determine the suitability of the antibody for your needs, please contact our Scientific Support team to discuss your requirements. Database link: Q00534
ポジティブ・コントロール	WB: HeLa, Jurkat, K562, RAW 264.7 and PC-12 whole cell lysates.
特記事項	This antibody clone is manufactured by Abcam. If you require a custom buffer formulation or conjugation for your experiments, please contact orders@abcam.com . This product is a recombinant monoclonal antibody, which offers several advantages including: - High batch-to-batch consistency and reproducibility - Improved sensitivity and specificity - Long-term security of supply - Animal-free production For more information see here .

 [Run BLAST with](#)

 [Run BLAST with](#)

製品の特性

製品の状態	Liquid
保存方法	Shipped at 4°C. Store at +4°C short term (1-2 weeks). Upon delivery aliquot. Store at -20°C long term. Avoid freeze / thaw cycle.
バッファー	pH: 7.2 Preservative: 0.01% Sodium azide Constituents: PBS, 0.05% BSA, 40% Glycerol (glycerin, glycerine)

精製度	Protein A purified
ポリ/モノ	モノクローナル
クローン名	98D
アイソタイプ	IgG1

アプリケーション

The Abpromise guarantee Abpromise保証は、次のテスト済みアプリケーションにおけるab241554の使用に適用されます
アプリケーションノートには、推奨の開始希釈率がありますが、適切な希釈率につきましてはご確認ください。

アプリケーション	Abreviews	特記事項
WB		Use a concentration of 0.518 µg/ml. Detects a band of approximately 37 kDa (predicted molecular weight: 37 kDa).

追加情報 Is unsuitable for ICC/IF.

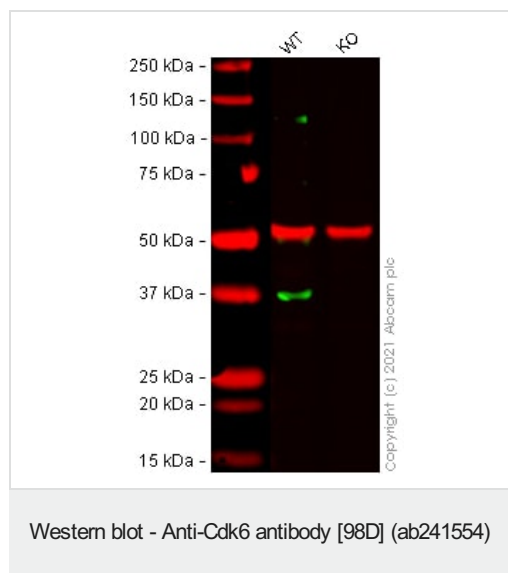
ターゲット情報

機能 Probably involved in the control of the cell cycle. Interacts with D-type G1 cyclins.

配列類似性 Belongs to the protein kinase superfamily. CMGC Ser/Thr protein kinase family. CDC2/CDKX subfamily.

Contains 1 protein kinase domain.

画像



All lanes : Anti-Cdk6 antibody [98D] (ab241554) at 1/2000 dilution

Lane 1 : Wild-type HeLa cell lysate

Lane 2 : CDK6 knockout HeLa cell lysate

Lysates/proteins at 20 µg per lane.

Performed under reducing conditions.

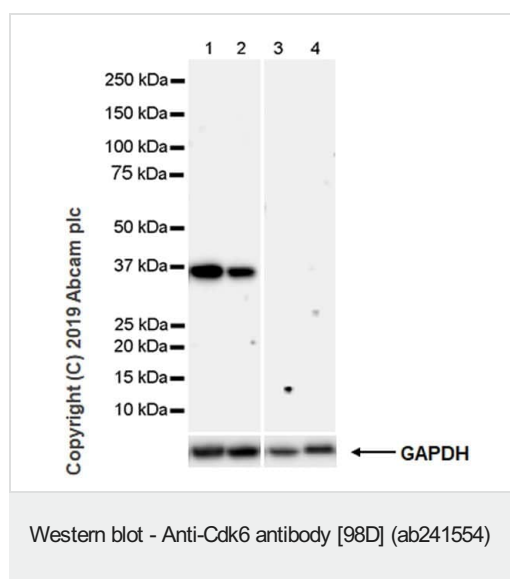
Predicted band size: 37 kDa

Observed band size: 38 kDa

Lanes 1 - 2: Merged signal (red and green). Green - ab241554 observed at 38 kDa. Red - loading control **ab52866** (Rabbit anti-alpha Tubulin antibody [EP1332Y]) observed at 55 kDa.

ab241554 was shown to react with Cdk6 in HeLa wild-type cells in

Western blot with loss of signal observed in CDK6 knockout cell line **ab266059** (CDK6 knockout cell lysate **ab257088**). Wild-type HeLa and CDK6 knockout cell lysates were subjected to SDS-PAGE. Membranes were blocked in 3 % milk in TBS-T (0.1 % Tween®) before incubation with ab241554 and **ab52866** (Rabbit anti-alpha Tubulin antibody [EP1332Y]) overnight at 4°C at a 1 in 2000 dilution and a 1 in 20000 dilution respectively. Blots were incubated with Goat anti-Mouse IgG H&L (IRDye® 800CW) preabsorbed (**ab216772**) and Goat anti-Rabbit IgG H&L (IRDye® 680RD) preabsorbed (**ab216777**) secondary antibodies at 1 in 20000 dilution for 1 h at room temperature before imaging.



All lanes : Anti-Cdk6 antibody [98D] (ab241554) at 0.518 µg/ml

Lane 1 : Jurkat (human T cell leukemia T lymphocyte), whole cell lysate

Lane 2 : K-562 (human chronic myelogenous leukemia lymphoblast), whole cell lysate

Lane 3 : PANC-1 (human pancreatic epithelioid carcinoma epithelial cell), whole cell lysate

Lane 4 : Saos-2 (human osteosarcoma epithelial), whole cell lysate

Lysates/proteins at 20 µg per lane.

Secondary

All lanes : Peroxidase-Conjugated Goat anti-Mouse IgG (H+L) at 1/10000 dilution

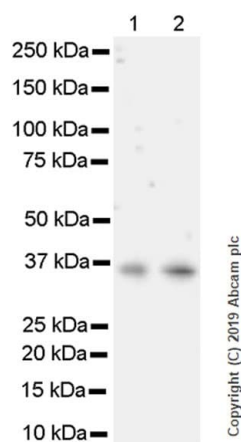
Predicted band size: 37 kDa

Observed band size: 37 kDa

Blocking and dilution buffer: 5% NFDM/TBST.

Exposure time: 3 minutes.

Negative control: PANC-1, Saos-2. (PMID: 8114739).



Western blot - Anti-Cdk6 antibody [98D] (ab241554)

All lanes : Anti-Cdk6 antibody [98D] (ab241554) at 0.518 µg/ml

Lane 1 : RAW264.7 (mouse Abelson murine leukemia virus-induced tumor macrophage), whole cell lysate

Lane 2 : PC-12 (rat adrenal gland pheochromocytoma), whole cell lysate

Lysates/proteins at 20 µg per lane.

Secondary

All lanes : Peroxidase-Conjugated Goat anti-Mouse IgG (H+L) at 1/10000 dilution

Predicted band size: 37 kDa

Observed band size: 37 kDa

Blocking and dilution buffer: 5% NFDM/TBST.

Exposure time: 3 minutes.

Why choose a recombinant antibody?



Research with confidence
Consistent and reproducible results



Long-term and scalable supply
Recombinant technology



Success from the first experiment
Confirmed specificity



Ethical standards compliant
Animal-free production

Anti-Cdk6 antibody [98D] (ab241554)

Please note: All products are "FOR RESEARCH USE ONLY. NOT FOR USE IN DIAGNOSTIC PROCEDURES"

Our Abpromise to you: Quality guaranteed and expert technical support

- Replacement or refund for products not performing as stated on the datasheet
- Valid for 12 months from date of delivery
- Response to your inquiry within 24 hours

- We provide support in Chinese, English, French, German, Japanese and Spanish
- Extensive multi-media technical resources to help you
- We investigate all quality concerns to ensure our products perform to the highest standards

If the product does not perform as described on this datasheet, we will offer a refund or replacement. For full details of the Abpromise, please visit <https://www.abcam.co.jp/abpromise> or contact our technical team.

Terms and conditions

- Guarantee only valid for products bought direct from Abcam or one of our authorized distributors