



### Anti-Cdk6 antibody [8H4] ab54576

KO 評価済

14 References 画像数 3

#### 製品の概要

製品名	Anti-Cdk6 antibody [8H4]
製品の詳細	Mouse monoclonal [8H4] to Cdk6
由来種	Mouse
アプリケーション	適用あり: WB
種交差性	交差種: Human
免疫原	Recombinant fragment: KDGLCRADQQ YECVAEIGEG AYGKVFKARD LKNGGRFVAL KRVRVQTGEE GMPLSTIREV AVLRHLETFE HPNVVRLFDV CTVSRTDRET KLTLVFE, corresponding to amino acids 3-100 of Human Cdk6  <a href="#">Run BLAST with ExPASy</a>  <a href="#">Run BLAST with NCBI</a>
ポジティブ・コントロール	WB: HAP1, HeLa and Jurkat cell lysates.
特記事項	<p>This product was changed from ascites to tissue culture supernatant on 5th December 2019. Lot numbers higher than GR3279055 are from tissue culture supernatant. Please note that the dilutions may need to be adjusted accordingly. If you have any questions, please do not hesitate to contact our scientific support team.</p> <p>The Life Science industry has been in the grips of a reproducibility crisis for a number of years. Abcam is leading the way in addressing this with our range of recombinant monoclonal antibodies and knockout edited cell lines for gold-standard validation. Please check that this product meets your needs before purchasing.</p> <p>If you have any questions, special requirements or concerns, please send us an inquiry and/or contact our Support team ahead of purchase. Recommended alternatives for this product can be found below, along with publications, customer reviews and Q&amp;As</p>

#### 製品の特性

製品の状態	Liquid
保存方法	Shipped at 4°C. Upon delivery aliquot and store at -20°C or -80°C. Avoid repeated freeze / thaw cycles.
バッファー	pH: 7.4
精製度	Tissue culture supernatant

ポリ/モノ	モノクローナル
クローン名	8H4
アイソタイプ	IgG1
軽鎖の種類	kappa

### アプリケーション

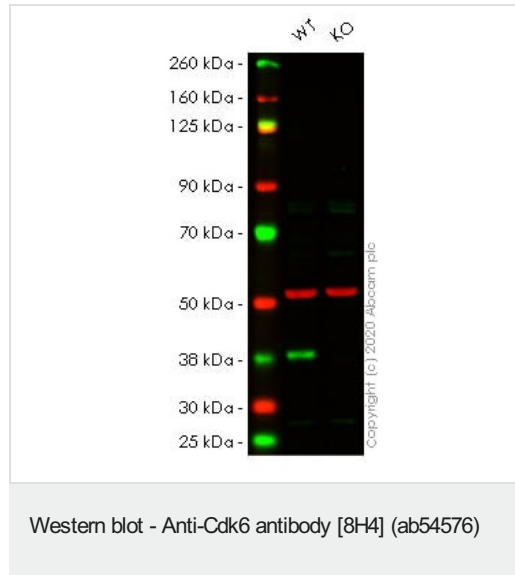
**The Abpromise guarantee**      Abpromise保証は、次のテスト済みアプリケーションにおけるab54576の使用に適用されます  
 アプリケーションノートには、推奨の開始希釈率がありますが、適切な希釈率につきましてはご確認ください。

アプリケーション	Abreviews	特記事項
WB		Use at an assay dependent concentration. Predicted molecular weight: 37 kDa.

### ターゲット情報

機能	Probably involved in the control of the cell cycle. Interacts with D-type G1 cyclins.
配列類似性	Belongs to the protein kinase superfamily. CMGC Ser/Thr protein kinase family. CDC2/CDKX subfamily. Contains 1 protein kinase domain.

### 画像



**All lanes :** Anti-Cdk6 antibody [8H4] (ab54576)

**Lane 1 :** Wild-type HeLa cell lysate  
**Lane 2 :** CDK6 knockout HeLa cell lysate

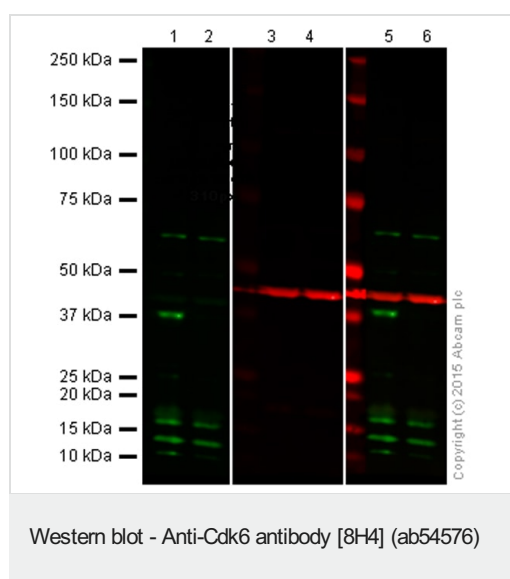
Lysates/proteins at 20 µg per lane.  
  
 Performed under reducing conditions.

**Predicted band size:** 37 kDa  
**Observed band size:** 37 kDa

**Lanes 1-2:** Merged signal (red and green). Green - ab54576 observed at 37 kDa. Red - Anti-alpha Tubulin antibody [EP1332Y] - Microtubule Marker ([ab52866](#)) observed at 50 kDa.

ab54576 was shown to react with Cdk6 in wild-type HeLa cells in western blot. Loss of signal was observed when knockout cell line

**ab266059** (knockout cell lysate **ab257088**) was used. Wild-type HeLa and CDK6 knockout HeLa cell lysates were subjected to SDS-PAGE. Membrane was blocked for 1 hour at room temperature in 0.1% TBST with 3% non-fat dried milk. **ab54576** and Anti-alpha Tubulin antibody [EP1332Y] - Microtubule Marker (**ab52866**) overnight at 4°C at a 1 µg/ml and a 1 in 20000 dilution respectively. Blots were developed with Goat anti-Mouse IgG H&L (IRDye®800CW) preadsorbed (**ab216772**) and Goat Anti-Rabbit IgG H&L (IRDye®680RD) preadsorbed (**ab216777**) secondary antibodies at 1 in 20000 dilution for 1 hour at room temperature before imaging.



**Lanes 1-2 :** Anti-Cdk6 antibody [8H4] (**ab54576**) at 1 µg

**Lanes 3-4 :** Anti-beta Actin antibody (**ab8227**) at 1/2000 dilution

**Lanes 1 & 3 :** Wild-type HAP1 cell lysate

**Lanes 2 & 4 :** CDK6 knockout HAP1 cell lysate

Lysates/proteins at 20 µg per lane.

**Predicted band size:** 37 kDa

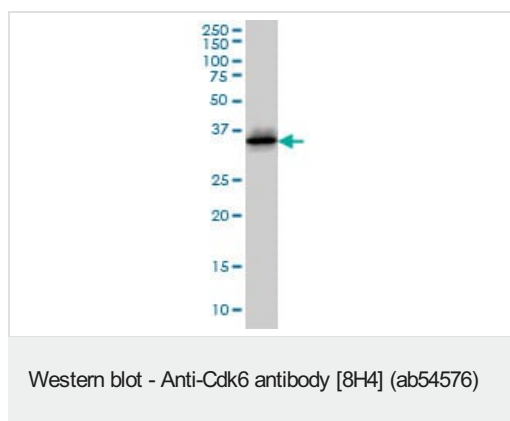
**Lanes 1 and 2:** Green signal from target – **ab54576** observed at 37 kDa

**Lanes 3 and 4:** Red signal from loading control – **ab8227** observed at 42 kDa

**Lanes 5 and 6:** Merged (red and green) signal

**ab54576** was shown to react with CDK6 when CDK6 knockout samples were used, along with additional cross-reactive bands. Wild-type and CDK6 knockout samples were subjected to SDS-PAGE. **ab54576** and **ab8227** (loading control to beta actin) were diluted 1 µg/mL and 1/2000 respectively and incubated overnight at 4°C. Blots were developed with Goat anti-Mouse IgG H&L (IRDye® 800CW) preadsorbed (**ab216772**) and Goat Anti-Rabbit IgG H&L (IRDye® 680RD) preadsorbed (**ab216777**) secondary antibodies at 1/10 000 dilution for 1 h at room temperature before imaging.

This image was generated using the ascites version of the product.



Cdk6 antibody (ab54576) at 1ug/lane + Jurkat cell lysate at 25ug/lane.

This image was generated using the ascites version of the product.

**Please note:** All products are "FOR RESEARCH USE ONLY. NOT FOR USE IN DIAGNOSTIC PROCEDURES"

### Our Abpromise to you: Quality guaranteed and expert technical support

---

- Replacement or refund for products not performing as stated on the datasheet
- Valid for 12 months from date of delivery
- Response to your inquiry within 24 hours
- We provide support in Chinese, English, French, German, Japanese and Spanish
- Extensive multi-media technical resources to help you
- We investigate all quality concerns to ensure our products perform to the highest standards

If the product does not perform as described on this datasheet, we will offer a refund or replacement. For full details of the Abpromise, please visit <https://www.abcam.co.jp/abpromise> or contact our technical team.

### Terms and conditions

---

- Guarantee only valid for products bought direct from Abcam or one of our authorized distributors