

Anti-CDK1 antibody [EPR165] ab133327

リコンビナント RabMAb

★★★★★ **3 Abreviews** **74 References** **画像数 6**

製品の概要

製品名	Anti-CDK1 antibody [EPR165]
製品の詳細	Rabbit monoclonal [EPR165] to CDK1
由来種	Rabbit
特異性	We have preliminary internal testing data to indicate this antibody doesn't react with CDK2, CDK3 and CDK5. Please contact us for more information.
アプリケーション	適用あり: Flow Cyt (Intra), ICC/IF, WB, IP, IHC-P
種交差性	交差種: Human
免疫原	Synthetic peptide within Human CDK1 aa 250 to the C-terminus (C terminal). The exact sequence is proprietary. Database link: P06493
ポジティブ・コントロール	WB: HeLa, Saos-2, Namalwa, and Jurkat whole cell lysate (ab7899). IHC-P: Human tonsil tissue. IP: HeLa. Flow Cyt: Jurkat cells.
特記事項	This product is a recombinant monoclonal antibody, which offers several advantages including: <ul style="list-style-type: none">- High batch-to-batch consistency and reproducibility- Improved sensitivity and specificity- Long-term security of supply- Animal-free production For more information see here . Our RabMAb [®] technology is a patented hybridoma-based technology for making rabbit monoclonal antibodies. For details on our patents, please refer to RabMAb[®] patents . Mouse, Rat: We have preliminary internal testing data to indicate this antibody may not react with these species. Please contact us for more information.

製品の特性

製品の状態	Liquid
保存方法	Shipped at 4°C. Store at -20°C. Stable for 12 months at -20°C.
バッファー	pH: 7.2 Preservative: 0.01% Sodium azide Constituents: 59% PBS, 40% Glycerol (glycerin, glycerine), 0.5% BSA

精製度	Protein A purified
ポリ/モノ	モノクローナル
クローン名	EPR165
アイソタイプ	IgG

アプリケーション

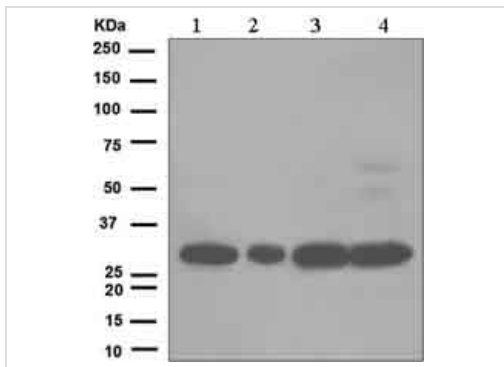
The Abpromise guarantee Abpromise保証は、次のテスト済みアプリケーションにおけるab133327の使用に適用されます
 アプリケーションノートには、推奨の開始希釈率がありますが、適切な希釈率につきましてはご検討ください。

アプリケーション	Abreviews	特記事項
Flow Cyt (Intra)		1/130. ab172730 - Rabbit monoclonal IgG, is suitable for use as an isotype control with this antibody.
ICC/IF	★★★★★ (1)	1/100 - 1/250.
WB	★★★★★ (2)	1/10000 - 1/50000. Predicted molecular weight: 34 kDa.
IP		1/10 - 1/100.
IHC-P		1/250 - 1/500. Perform heat mediated antigen retrieval with citrate buffer pH 6 before commencing with IHC staining protocol.

ターゲット情報

機能	Plays a key role in the control of the eukaryotic cell cycle. It is required in higher cells for entry into S-phase and mitosis. p34 is a component of the kinase complex that phosphorylates the repetitive C-terminus of RNA polymerase II.
組織特異性	Isoform 2 is found in breast cancer tissues.
配列類似性	Belongs to the protein kinase superfamily. CMGC Ser/Thr protein kinase family. CDC2/CDKX subfamily. Contains 1 protein kinase domain.
細胞内局在	Nucleus.
製品の状態	CDK1 can be located to the Nucleus, cytoplasm and Mitochondria. It's cytoplasmic during interphase and reversibly translocated from cytoplasm to the nucleus when phosphorylated before G2-M transition when associated with cyclin-B1. Accumulates in mitochondria in G2-arrested cells upon DNA-damage.

画像



Western blot - Anti-CDK1 antibody [EPR165] (ab133327)

All lanes : Anti-CDK1 antibody [EPR165] (ab133327) at 1/10000 dilution

Lane 1 : HeLa cell lysate

Lane 2 : Saos-2 cell lysate

Lane 3 : Namalwa cell lysate

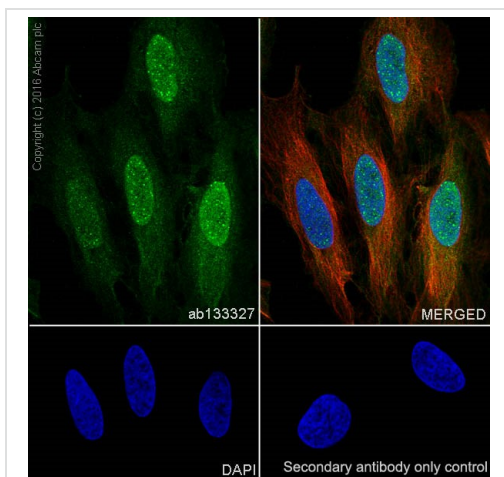
Lane 4 : Jurkat cell lysate

Lysates/proteins at 10 µg per lane.

Secondary

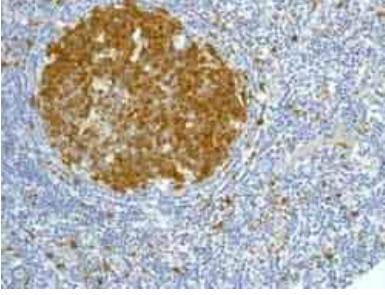
All lanes : HRP labelled goat anti-rabbit at 1/2000 dilution

Predicted band size: 34 kDa



Immunocytochemistry/ Immunofluorescence - Anti-CDK1 antibody [EPR165] (ab133327)

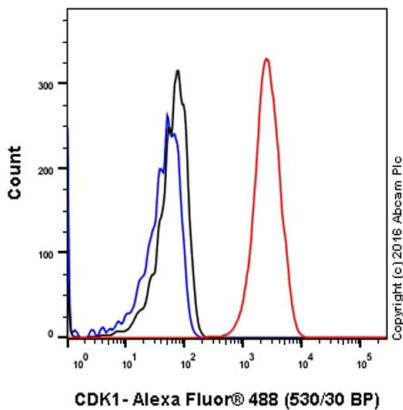
Immunocytochemistry/ Immunofluorescence analysis of HeLa (Human epithelial cell line from cervix adenocarcinoma) cells labeling CDK1 with ab133327 at 1/500 dilution (0.6 µg/ml). Cells were fixed in 4% paraformaldehyde and permeabilized with 0.1% tritonX-100. Cells were counterstained with **ab195889**, an anti-alpha Tubulin antibody [DM1A] - Microtubule Marker (Alexa Fluor® 594) at 1/200 (2.5 µg/ml). **ab150077**, a Goat anti-rabbit IgG (Alexa Fluor® 488) was used as the secondary antibody at 1/1000 dilution (2 µg/ml). DAPI nuclear counterstain. Confocal image showing strong nuclear and weakly cytoplasmic staining on HeLa cell line.



Immunohistochemistry (Formalin/PFA-fixed paraffin-embedded sections) - Anti-CDK1 antibody [EPR165] (ab133327)

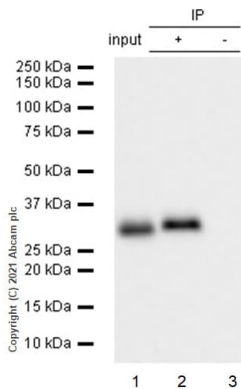
Immunohistochemical analysis of paraffin-embedded human tonsil tissue labelling CDK1 with ab133327 at 1/250 dilution.

Perform heat mediated antigen retrieval with citrate buffer pH 6 before commencing with IHC staining protocol.



Flow Cytometry (Intracellular) - Anti-CDK1 antibody [EPR165] (ab133327)

Intracellular Flow Cytometry analysis of Jurkat (human acute T cell leukemia) cells labeling CDK1 with purified ab133327 at 1/130 dilution (10ug/mL) (red). Cells were fixed with 4% paraformaldehyde and permeabilised with 90% methanol. A Goat anti rabbit IgG (Alexa Fluor®488) (1/2000 dilution) was used as the secondary antibody. Rabbit monoclonal IgG (Black) was used as the isotype control, cells without incubation with primary antibody and secondary antibody (Blue) was used as the unlabeled control.



Immunoprecipitation - Anti-CDK1 antibody [EPR165] (ab133327)

CDK1 was immunoprecipitated from 0.35 mg HeLa (Human cervix adenocarcinoma epithelial cell) whole cell lysate 10 µg with 133327 at 1/20 dilution (2µg) . VeriBlot for IP Detection Reagent (HRP) (**ab131366**) was used at 1/5000 dilution.





Lane 1: HeLa (Human cervix adenocarcinoma epithelial cell) whole cell lysate 10 µg

Lane 2: ab133327 IP in HeLa whole cell lysate

Lane 3: Rabbit monoclonal IgG (**ab172730**) instead of ab133327 in HeLa whole cell lysate

Blocking and dilution buffer and concentration: 5% NFDN/TBST.

Why choose a recombinant antibody?

 Research with confidence Consistent and reproducible results	 Long-term and scalable supply Recombinant technology
 Success from the first experiment Confirmed specificity	 Ethical standards compliant Animal-free production

Anti-CDK1 antibody [EPR165] (ab133327)

Please note: All products are "FOR RESEARCH USE ONLY. NOT FOR USE IN DIAGNOSTIC PROCEDURES"

Our Abpromise to you: Quality guaranteed and expert technical support

- Replacement or refund for products not performing as stated on the datasheet
- Valid for 12 months from date of delivery
- Response to your inquiry within 24 hours
- We provide support in Chinese, English, French, German, Japanese and Spanish
- Extensive multi-media technical resources to help you
- We investigate all quality concerns to ensure our products perform to the highest standards

If the product does not perform as described on this datasheet, we will offer a refund or replacement. For full details of the Abpromise, please visit <https://www.abcam.co.jp/abpromise> or contact our technical team.

Terms and conditions

- Guarantee only valid for products bought direct from Abcam or one of our authorized distributors