

Anti-Cdc27 antibody [AF3.1] ab10538

★★★★☆ [1 Abreviews](#) [12 References](#) [画像数 3](#)

製品の概要

製品名	Anti-Cdc27 antibody [AF3.1]
製品の詳細	Mouse monoclonal [AF3.1] to Cdc27
由来種	Mouse
アプリケーション	適用あり: WB, IHC-P, Flow Cyt
種交差性	交差種: Mouse, Human
免疫原	Synthetic peptide conjugated to KLH, corresponding to amino acids 814-823 of Human Cdc27.
ポジティブ・コントロール	HeLa cell nuclear extract.
特記事項	<p>The Life Science industry has been in the grips of a reproducibility crisis for a number of years. Abcam is leading the way in addressing this with our range of recombinant monoclonal antibodies and knockout edited cell lines for gold-standard validation. Please check that this product meets your needs before purchasing.</p> <p>If you have any questions, special requirements or concerns, please send us an inquiry and/or contact our Support team ahead of purchase. Recommended alternatives for this product can be found below, along with publications, customer reviews and Q&As</p>

製品の特性

製品の状態	Liquid
保存方法	Shipped at 4°C. Store at +4°C short term (1-2 weeks). Upon delivery aliquot. Store at -20°C or -80°C. Avoid freeze / thaw cycle.
バッファー	Preservative: 0.02% Sodium azide Constituent: 99.98% PBS
精製度	Protein A purified
ポリ/モノ	モノクローナル
クローン名	AF3.1
アイソタイプ	IgG2b

アプリケーション

The Abpromise guarantee

Abpromise保証は、次のテスト済みアプリケーションにおけるab10538の使用に適用されます

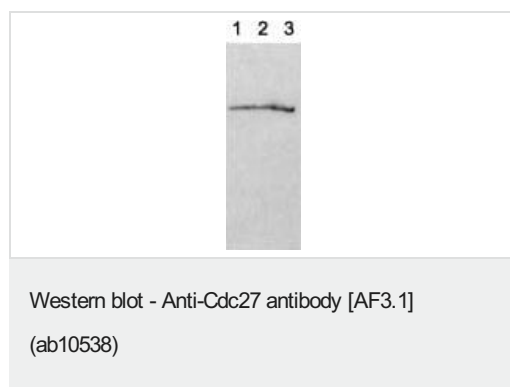
アプリケーションノートには、推奨の開始希釈率がありますが、適切な希釈率につきましてはご確認ください。

アプリケーション	Abreviews	特記事項
WB	★★★★★ (1)	Use a concentration of 1 - 2 µg/ml. Detects a band of approximately 80 kDa (predicted molecular weight: 92 kDa).
IHC-P		Use at an assay dependent concentration.
Flow Cyt		Use 1 µg for 10 ⁶ cells. ab170192 - Mouse monoclonal IgG2b, is suitable for use as an isotype control with this antibody.

ターゲット情報

機能	Component of the anaphase promoting complex/cyclosome (APC/C), a cell cycle-regulated E3 ubiquitin ligase that controls progression through mitosis and the G1 phase of the cell cycle. The APC/C complex acts by mediating ubiquitination and subsequent degradation of target proteins: it mainly mediates the formation of 'Lys-11'-linked polyubiquitin chains and, to a lower extent, the formation of 'Lys-48'- and 'Lys-63'-linked polyubiquitin chains.
パスウェイ	Protein modification; protein ubiquitination.
配列類似性	Belongs to the APC3/CDC27 family. Contains 9 TPR repeats.
翻訳後修飾	Phosphorylated. Phosphorylation on Ser-426 and Thr-446 occurs specifically during mitosis.
細胞内局在	Nucleus.

画像



All lanes : Anti-Cdc27 antibody [AF3.1] (ab10538)

Lane 1 : HeLa cell lysate

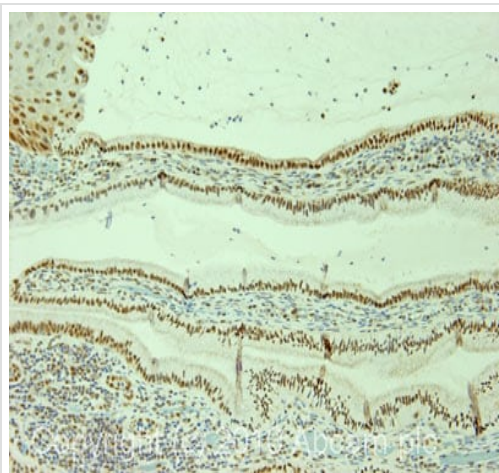
Lane 2 : 293 cell lysate

Lane 3 : Mouse myeloid cell lysate

Predicted band size: 92 kDa

Observed band size: 80 kDa

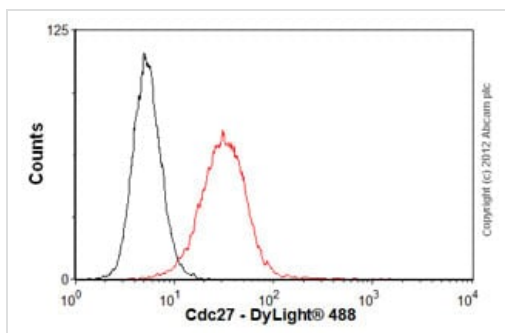
We have no more information on how this image was prepared by the academic who produced the antibody.



Immunohistochemistry (Formalin/PFA-fixed paraffin-embedded sections) - Anti-Cdc27 antibody [AF3.1] (ab10538)

IHC image of ab10538 staining in human cervical carcinoma formalin fixed paraffin embedded tissue section, performed on a Leica Bond™ system using the standard protocol F. The section was pre-treated using heat mediated antigen retrieval with sodium citrate buffer (pH6, epitope retrieval solution 1) for 20 mins. The section was then incubated with ab10538, 1µg/ml, for 15 mins at room temperature and detected using an HRP conjugated compact polymer system. DAB was used as the chromogen. The section was then counterstained with haematoxylin and mounted with DPX.

For other IHC staining systems (automated and non-automated) customers should optimize variable parameters such as antigen retrieval conditions, primary antibody concentration and antibody incubation times.



Flow Cytometry - Anti-Cdc27 antibody [AF3.1] (ab10538)

Overlay histogram showing K562 cells stained with ab10538 (red line). The cells were fixed with 4% paraformaldehyde (10 min) and then permeabilized with 0.1% PBS-Tween for 20 min. The cells were then incubated in 1x PBS / 10% normal goat serum / 0.3M glycine to block non-specific protein-protein interactions followed by the antibody (ab10538, 1µg/1x10⁶ cells) for 30 min at 22°C. The secondary antibody used was DyLight® 488 goat anti-mouse IgG (H+L) ([ab96879](#)) at 1/500 dilution for 30 min at 22°C. Isotype control antibody (black line) was mouse IgG2b [PLPV219] ([ab91366](#), 2µg/1x10⁶ cells) used under the same conditions. Acquisition of >5,000 events was performed. This antibody gave a positive signal in K562 cells fixed with 80% methanol (5 min)/permeabilized with 0.1% PBS-Tween for 20 min used under the same conditions.

Please note: All products are "FOR RESEARCH USE ONLY. NOT FOR USE IN DIAGNOSTIC PROCEDURES"

Our Abpromise to you: Quality guaranteed and expert technical support

- Replacement or refund for products not performing as stated on the datasheet
- Valid for 12 months from date of delivery
- Response to your inquiry within 24 hours
- We provide support in Chinese, English, French, German, Japanese and Spanish

- Extensive multi-media technical resources to help you
- We investigate all quality concerns to ensure our products perform to the highest standards

If the product does not perform as described on this datasheet, we will offer a refund or replacement. For full details of the Abpromise, please visit <https://www.abcam.co.jp/abpromise> or contact our technical team.

Terms and conditions

- Guarantee only valid for products bought direct from Abcam or one of our authorized distributors