

### Anti-Cdc25B antibody [EPR3459(2)] ab124819

リコンビナント **RabMAb**

**5 References**    **画像数 3**

#### 製品の概要

製品名	Anti-Cdc25B antibody [EPR3459(2)]
製品の詳細	Rabbit monoclonal [EPR3459(2)] to Cdc25B
由来種	Rabbit
アプリケーション	<b>適用あり:</b> WB, IP <b>適用なし:</b> Flow Cyt
種交差性	<b>交差種:</b> Mouse, Human
免疫原	Synthetic peptide within Human Cdc25B aa 150-250. The exact sequence is proprietary.
ポジティブ・コントロール	K562 cell lysate, U937 cell lysate and THP-1 cell lysate, mouse embryo E17 and NIH3T3 cell lysates
特記事項	<p>This product is a recombinant monoclonal antibody, which offers several advantages including:</p> <ul style="list-style-type: none"> <li>- High batch-to-batch consistency and reproducibility</li> <li>- Improved sensitivity and specificity</li> <li>- Long-term security of supply</li> <li>- Animal-free production</li> </ul> <p>For more information <a href="#">see here</a>.</p> <p>Our RabMAb<sup>®</sup> technology is a patented hybridoma-based technology for making rabbit monoclonal antibodies. For details on our patents, please refer to <a href="#">RabMAb<sup>®</sup> patents</a>.</p> <p>Mouse, Rat: We have preliminary internal testing data to indicate this antibody may not react with these species. Please contact us for more information.</p>

#### 製品の特性

製品の状態	Liquid
保存方法	Shipped at 4°C. Store at -20°C. Stable for 12 months at -20°C.
バッファー	pH: 7.2 Preservative: 0.05% Sodium azide Constituents: 0.1% BSA, 40% Glycerol (glycerin, glycerine), 9.85% Tris glycine, 50% Tissue culture supernatant
精製度	Protein A purified

ポリ/モノ	モノクローナル
クローン名	EPR3459(2)
アイソタイプ	IgG

## アプリケーション

**The Abpromise guarantee** **Abpromise保証は、**次のテスト済みアプリケーションにおけるab124819の使用に適用されます  
アプリケーションノートには、推奨の開始希釈率がありますが、適切な希釈率につきましてはご検討ください。

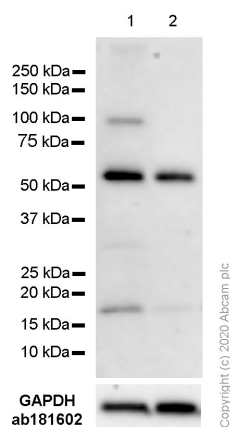
アプリケーション	Abreviews	特記事項
WB		1/1000 - 1/10000. Detects a band of approximately 64 kDa (predicted molecular weight: 64 kDa).
IP		1/10 - 1/100.

**追加情報** Is unsuitable for Flow Cyt.

## ターゲット情報

<b>機能</b>	Tyrosine protein phosphatase which functions as a dosage-dependent inducer of mitotic progression. Required for G2/M phases of the cell cycle progression and abscission during cytokinesis in a ECT2-dependent manner. Directly dephosphorylates CDK1 and stimulates its kinase activity. The three isoforms seem to have a different level of activity.
<b>配列類似性</b>	Belongs to the MPI phosphatase family. Contains 1 rhodanese domain.
<b>翻訳後修飾</b>	Phosphorylated by BRSK1 in vitro. Phosphorylated by CHEK1, which inhibits the activity of this protein. Phosphorylation at Ser-353 by AURKA might locally participate in the control of the onset of mitosis. Phosphorylation by MELK at Ser-169 promotes localization to the centrosome and the spindle poles during mitosis. Phosphorylation at Ser-323 and Ser-375 by MAPK14 is required for binding to 14-3-3 proteins.
<b>細胞内局在</b>	Cytoplasm, cytoskeleton, microtubule organizing center, centrosome. Cytoplasm, cytoskeleton, spindle pole.

## 画像



Western blot - Anti-Cdc25B antibody [EPR3459(2)]  
(ab124819)

**All lanes :** Anti-Cdc25B antibody [EPR3459(2)] (ab124819) at 0.486 µg/ml

**Lane 1 :** NIH/3T3 (Mouse embryonic fibroblast) cell lysates

**Lane 2 :** Mouse embryo E17 lysates

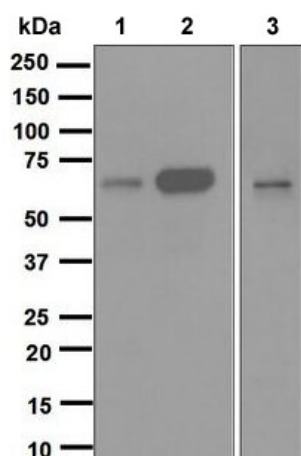
Lysates/proteins at 20 µg per lane.

#### Secondary

**All lanes :** Goat Anti-Rabbit IgG H&L (HRP) ([ab97051](#)) at 0.05 µg/ml

**Predicted band size:** 64 kDa

**Observed band size:** 64 kDa



Western blot - Anti-Cdc25B antibody [EPR3459(2)]  
(ab124819)

**All lanes :** Anti-Cdc25B antibody [EPR3459(2)] (ab124819) at 1/1000 dilution

**Lane 1 :** K562 cell lysate

**Lane 2 :** U937 cell lysate

**Lane 3 :** THP-1 cell lysate

Lysates/proteins at 10 µg per lane.

#### Secondary

**All lanes :** Goat-anti-rabbit HRP at 1/2000 dilution

**Predicted band size:** 64 kDa

**Observed band size:** 64 kDa

### Why choose a recombinant antibody?



**Research with confidence**  
Consistent and reproducible results



**Long-term and scalable supply**  
Recombinant technology



**Success from the first experiment**  
Confirmed specificity



**Ethical standards compliant**  
Animal-free production

Anti-Cdc25B antibody [EPR3459(2)] (ab124819)

**Please note:** All products are "FOR RESEARCH USE ONLY. NOT FOR USE IN DIAGNOSTIC PROCEDURES"

### Our Abpromise to you: Quality guaranteed and expert technical support

---

- Replacement or refund for products not performing as stated on the datasheet
- Valid for 12 months from date of delivery
- Response to your inquiry within 24 hours
- We provide support in Chinese, English, French, German, Japanese and Spanish
- Extensive multi-media technical resources to help you
- We investigate all quality concerns to ensure our products perform to the highest standards

If the product does not perform as described on this datasheet, we will offer a refund or replacement. For full details of the Abpromise, please visit <https://www.abcam.co.jp/abpromise> or contact our technical team.

### Terms and conditions

---

- Guarantee only valid for products bought direct from Abcam or one of our authorized distributors