



Anti-Cdc25A (phospho S76) antibody ab75743

6 References [画像数 2](#)

製品の概要

| | |
|--------------|-----------------------------------------------------------------------------------------------------------------------------------------------------------------------------------------------------------------------------------------------------------------------------------------------------------------------------------------------------------------------------------------------------------------------------------------------------------------------------------------------------------------------------------------------------------------------------------------------------------------|
| 製品名 | Anti-Cdc25A (phospho S76) antibody |
| 製品の詳細 | Rabbit polyclonal to Cdc25A (phospho S76) |
| 由来種 | Rabbit |
| アプリケーション | 適用あり: WB, IHC-P |
| 種交差性 | 交差種: Mouse, Rat, Human |
| 免疫原 | Synthetic peptide corresponding to Human Cdc25A (phospho S76).  Run BLAST with ExPASy  Run BLAST with NCBI |
| ポジティブ・コントロール | Human breast carcinoma tissue; extracts from A2780 cells untreated or treated with UV. |
| 特記事項 | <p>The Life Science industry has been in the grips of a reproducibility crisis for a number of years. Abcam is leading the way in addressing this with our range of recombinant monoclonal antibodies and knockout edited cell lines for gold-standard validation. Please check that this product meets your needs before purchasing.</p> <p>If you have any questions, special requirements or concerns, please send us an inquiry and/or contact our Support team ahead of purchase. Recommended alternatives for this product can be found below, along with publications, customer reviews and Q&As</p> |

製品の特性

| | |
|-----------|-----------------------------------------------------------------------------------------------------------------------------------------------------------------------------------------------------------------------------------------------------------------|
| 製品の状態 | Liquid |
| 保存方法 | Shipped at 4°C. Upon delivery aliquot and store at -20°C. Avoid freeze / thaw cycles. |
| バッファー | pH: 7.40 Preservative: 0.02% Sodium azide Constituents: 50% Glycerol, 0.87% Sodium chloride, PBS |
| | Without Mg ²⁺ and Ca ²⁺ |
| 精製度 | Immunogen affinity purified |
| 特記事項 (精製) | ab75743 was affinity purified from rabbit antiserum by affinity chromatography using epitope specific phosphopeptide. The antibody against non phosphopeptide was removed by chromatography using non phosphopeptide corresponding to the phosphorylation site. |
| ポリ/モノ | ポリクローナル |
| アイソタイプ | IgG |

アプリケーション

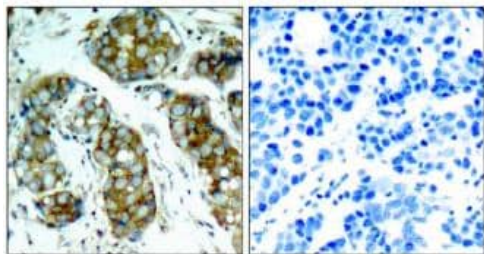
The Abpromise guarantee **Abpromise保証は、次のテスト済みアプリケーションにおけるab75743の使用に適用されます**
アプリケーションノートには、推奨の開始希釈率がありますが、適切な希釈率につきましてはご確認ください。

| アプリケーション | Abreviews | 特記事項 |
|----------|-----------|-----------------------------------------------------|
| WB | | 1/500 - 1/1000. Predicted molecular weight: 59 kDa. |
| IHC-P | | 1/50 - 1/100. |

ターゲット情報

| | |
|-------|---------------------------------------------------------------------------------------------------------------------------------------------------------------------------------------------------------------------------------------------------------------------------------------------------------------------------------------------------------------------------------------------------------------------------------------------------------------------------------------------------------------------------------------------------------------------------------------------------------------------------------------------------------------------------------------------------------------------------------------------------------------------------------------------------------------------------------------------------------------------------------------------------------------------------------------------------------------------------------------------------------------------------------------------------------------------------------------------------------------------------------------------------------------------------------------------------------------------------------------------------------------------------------------|
| 機能 | Tyrosine protein phosphatase which functions as a dosage-dependent inducer of mitotic progression. Directly dephosphorylates CDK1 and stimulates its kinase activity. Also dephosphorylates CDK2 in complex with cyclin E, in vitro. |
| 配列類似性 | Belongs to the MPI phosphatase family. Contains 1 rhodanese domain. |
| ドメイン | The phosphodegron motif mediates interaction with specific F-box proteins when phosphorylated. Putative phosphorylation sites at Ser-79 and Ser-82 appear to be essential for this interaction. |
| 翻訳後修飾 | Phosphorylated by CHEK1 on Ser-76, Ser-124, Ser-178, Ser-279, Ser-293 and Thr-507 during checkpoint mediated cell cycle arrest. Also phosphorylated by CHEK2 on Ser-124, Ser-279, and Ser-293 during checkpoint mediated cell cycle arrest. Phosphorylation on Ser-178 and Thr-507 creates binding sites for YWHAE/14-3-3 epsilon which inhibits CDC25A. Phosphorylation on Ser-76, Ser-124, Ser-178, Ser-279 and Ser-293 may also promote ubiquitin-dependent proteolysis of CDC25A by the SCF complex. Phosphorylation of CDC25A at Ser-76 by CHEK1 primes it for subsequent phosphorylation at Ser-79, Ser-82 and Ser-88 by NEK11. Phosphorylation by NEK11 is required for BTRC-mediated polyubiquitination and degradation. Phosphorylation by PIM1 leads to an increase in phosphatase activity. Phosphorylated by PLK3 following DNA damage, leading to promote its ubiquitination and degradation. Ubiquitinated by the anaphase promoting complex/cyclosome (APC/C) ubiquitin ligase complex that contains FZR1/CDH1 during G1 phase leading to its degradation by the proteasome. Ubiquitinated by a SCF complex containing BTRC and FBXW11 during S phase leading to its degradation by the proteasome. Deubiquitination by USP17L2/DUB3 leads to its stabilization. |

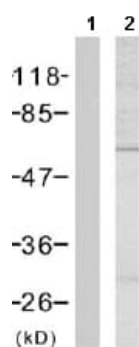
画像



P-Peptide - +

Immunohistochemistry (Formalin/PFA-fixed paraffin-embedded sections) - Anti-Cdc25A (phospho S76) antibody (ab75743)

ab75743, at a 1/50 dilution, staining Cdc25A in paraffin embedded human breast carcinoma tissue by Immunohistochemistry, in the absence (left image) or presence (right image) of the immunizing phospho peptide.



Western blot - Anti-Cdc25A (phospho S76) antibody (ab75743)

All lanes : Anti-Cdc25A (phospho S76) antibody (ab75743) at 1/500 dilution

Lane 1 : A2780 cell extracts, untreated

Lane 2 : A2780 cell extracts, treated with UV

Predicted band size: 59 kDa

Observed band size: 59 kDa

Additional bands at: 30 kDa. We are unsure as to the identity of these extra bands.

Please note: All products are "FOR RESEARCH USE ONLY. NOT FOR USE IN DIAGNOSTIC PROCEDURES"

Our Abpromise to you: Quality guaranteed and expert technical support

- Replacement or refund for products not performing as stated on the datasheet
- Valid for 12 months from date of delivery
- Response to your inquiry within 24 hours
- We provide support in Chinese, English, French, German, Japanese and Spanish
- Extensive multi-media technical resources to help you
- We investigate all quality concerns to ensure our products perform to the highest standards

If the product does not perform as described on this datasheet, we will offer a refund or replacement. For full details of the Abpromise, please visit <https://www.abcam.co.jp/abpromise> or contact our technical team.

Terms and conditions

- Guarantee only valid for products bought direct from Abcam or one of our authorized distributors