


Anti-Cdc20 antibody ab26483

★★★★★ **1 Abreviews** **16 References** 画像数 **2**

製品の概要

製品名	Anti-Cdc20 antibody
製品の詳細	Rabbit polyclonal to Cdc20
由来種	Rabbit
アプリケーション	適用あり: WB, ICC/IF
種交差性	交差種: Human 交差が予測される動物種: Mouse, Rat, Chicken, Pig 
免疫原	Synthetic peptide conjugated to KLH derived from within residues 450 to the C-terminus of Human Cdc20. Immunogen の所有権に関して (Peptide available as ab28138 .)
ポジティブ・コントロール	This antibody gave a positive result in the following whole cell lysates: Raji (Human Burkitt's lymphoma cell line) THP1 (Human acute monocytic leukemia cell line) HEK 293 (Human embryonic kidney cell line) HL60 (Human promyelocytic leukemia cell line)
特記事項	<p>The Life Science industry has been in the grips of a reproducibility crisis for a number of years. Abcam is leading the way in addressing this with our range of recombinant monoclonal antibodies and knockout edited cell lines for gold-standard validation. Please check that this product meets your needs before purchasing.</p> <p>If you have any questions, special requirements or concerns, please send us an inquiry and/or contact our Support team ahead of purchase. Recommended alternatives for this product can be found below, along with publications, customer reviews and Q&As</p>

製品の特性

製品の状態	Liquid
保存方法	Shipped at 4°C. Store at +4°C short term (1-2 weeks). Upon delivery aliquot. Store at -20°C or -80°C. Avoid freeze / thaw cycle.
バッファー	pH: 7.40 Preservative: 0.02% Sodium azide Constituent: PBS
	Batches of this product that have a concentration < 1mg/ml may have BSA added as a stabilising agent. If you would like information about the formulation of a specific lot, please contact our scientific support team who will be happy to help.

精製度	Immunogen affinity purified
ポリ/モノ	ポリクローナル
アイソタイプ	IgG

アプリケーション

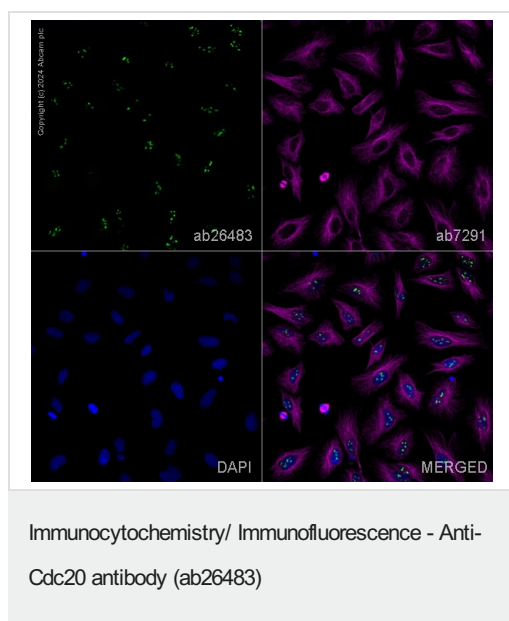
The Abpromise guarantee **Abpromise保証は、次のテスト済みアプリケーションにおけるab26483の使用に適用されます**
アプリケーションノートには、推奨の開始希釈率がありますが、適切な希釈率につきましてはご検討ください。

アプリケーション	Abreviews	特記事項
WB	★★★★★ (1)	Use a concentration of 1 µg/ml. Detects a band of approximately 60 kDa (predicted molecular weight: 55 kDa).
ICC/IF		Use a concentration of 1 µg/ml.

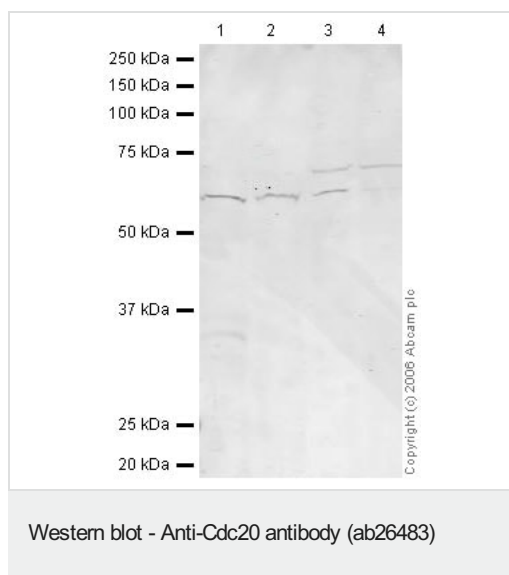
ターゲット情報

機能	Required for full ubiquitin ligase activity of the anaphase promoting complex/cyclosome (APC/C) and may confer substrate specificity upon the complex. Is regulated by MAD2L1. In metaphase the MAD2L1-CDC20-APC/C ternary complex is inactive and in anaphase the CDC20-APC/C binary complex is active in degrading substrates.
パスウェイ	Protein modification; protein ubiquitination.
配列類似性	Belongs to the WD repeat CDC20/Fizzy family. Contains 7 WD repeats.
発生段階	Synthesis is initiated at G1/S, protein level peaks in M phase and protein is abruptly degraded at M/G1 transition.
翻訳後修飾	Phosphorylated during mitosis, probably by maturation promoting factor (MPF). Phosphorylated by BUB1 at Ser-41; Ser-72; Ser-92; Ser-153; Thr-157 and Ser-161. Ubiquitinated and degraded by the proteasome during spindle assembly checkpoint. Deubiquitinated by USP44, leading to stabilize the MAD2L1-CDC20-APC/C ternary complex, thereby preventing premature activation of the APC/C.

画像



ab26483 staining Cdc20 in HeLa cells. The cells were fixed with 100% methanol (5 min), permeabilized with 0.1% PBS-Triton X-100 for 5 minutes and then blocked with 1% BSA/10% normal goat serum/0.3M glycine in 0.1% PBS-Tween for 1h. The cells were then incubated overnight at 4°C with ab26483 at 1µg/ml and **ab6046**, Rabbit polyclonal to beta Tubulin - Loading Control. Cells were then incubated with **ab150117**, Goat polyclonal Secondary Antibody to Mouse IgG H&L (Alexa Fluor® 488) preadsorbed at 1/1000 dilution (shown in green) and **ab150080**, Goat polyclonal Secondary Antibody to Rabbit IgG - H&L (Alexa Fluor® 594) at 1/1000 dilution (shown in pseudocolour magenta). Nuclear DNA was labelled with DAPI (shown in blue). Also suitable in cells fixed with 4% paraformaldehyde (10 min). Image was acquired with a high-content analyser (Operetta CLS, Perkin Elmer) and a maximum intensity projection of confocal sections is shown.



All lanes : Anti-Cdc20 antibody (ab26483) at 1 µg/ml

Lane 1 : Raji (Human Burkitt's lymphoma cell line) Whole Cell Lysate (**ab7908**)

Lane 2 : THP-1 whole cell lysate (**ab7913**)

Lane 3 : HEK-293 whole cell lysate (**ab7902**)

Lane 4 : HL-60 whole cell lysate (**ab7914**)

Lysates/proteins at 20 µg per lane.

Secondary

All lanes : IRDye 680 Conjugated Goat Anti-Rabbit IgG (H+L) at 1/15000 dilution

Performed under reducing conditions.

Predicted band size: 55 kDa

ab26483 consistently detects a band at 55-60 kDa but we also see bands of ~35 and 70 kDa that appear with varying intensity in some of our extracts. We cannot find an explanation for this and are unsure of the nature of these crossreacting bands.

Please note: All products are "FOR RESEARCH USE ONLY. NOT FOR USE IN DIAGNOSTIC PROCEDURES"

Our Abpromise to you: Quality guaranteed and expert technical support

- Replacement or refund for products not performing as stated on the datasheet
- Valid for 12 months from date of delivery
- Response to your inquiry within 24 hours
- We provide support in Chinese, English, French, German, Japanese and Spanish
- Extensive multi-media technical resources to help you
- We investigate all quality concerns to ensure our products perform to the highest standards

If the product does not perform as described on this datasheet, we will offer a refund or replacement. For full details of the Abpromise, please visit <https://www.abcam.co.jp/abpromise> or contact our technical team.

Terms and conditions

- Guarantee only valid for products bought direct from Abcam or one of our authorized distributors