

Anti-CDA antibody ab231981

画像数 7

製品の概要

製品名	Anti-CDA antibody
製品の詳細	Rabbit polyclonal to CDA
由来種	Rabbit
アプリケーション	適用あり: ICC/IF, IHC-P, WB
種交差性	交差種: Human, Pig
免疫原	Recombinant full length protein (His-T7-tag) corresponding to Human CDA aa 1 to the C-terminus. Expressed in E.coli. Database link: P32320 Run BLAST with Run BLAST with
ポジティブ・コントロール	WB: Recombinant human CDA protein; HeLa whole cell lysate; Pig kidney tissue lysate. IHC-P: Human kidney, lung cancer, skin cancer and bile duct cancer tissue. ICC/IF: HeLa cells.
特記事項	<p>The Life Science industry has been in the grips of a reproducibility crisis for a number of years. Abcam is leading the way in addressing this with our range of recombinant monoclonal antibodies and knockout edited cell lines for gold-standard validation. Please check that this product meets your needs before purchasing.</p> <p>If you have any questions, special requirements or concerns, please send us an inquiry and/or contact our Support team ahead of purchase. Recommended alternatives for this product can be found below, along with publications, customer reviews and Q&As</p>

製品の特性

製品の状態	Liquid
保存方法	Shipped at 4°C. Store at +4°C short term (1-2 weeks). Upon delivery aliquot. Store at -20°C long term. Avoid freeze / thaw cycle.
バッファー	pH: 7.40 Preservative: 0.011% Proclin 300 Constituents: 55.77% Glycerol (glycerin, glycerine), 44.219% PBS
精製度	Immunogen affinity purified
特記事項 (精製)	Antigen-specific affinity chromatography followed by Protein A affinity chromatography.
ポリ/モノ	ポリクローナル
アイソタイプ	IgG

アプリケーション

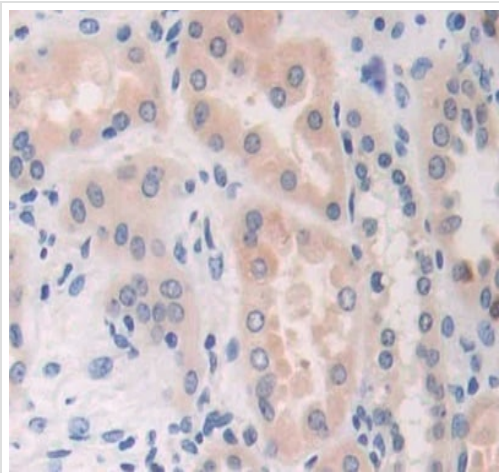
The Abpromise guarantee **Abpromise保証は、** 次のテスト済みアプリケーションにおけるab231981の使用に適用されます
アプリケーションノートには、推奨の開始希釈率がありますが、適切な希釈率につきましてはご検討ください。

アプリケーション	Abreviews	特記事項
ICC/IF		Use a concentration of 5 - 20 µg/ml.
IHC-P		Use a concentration of 5 - 20 µg/ml.
WB		Use a concentration of 0.5 - 2 µg/ml. Predicted molecular weight: 16 kDa.

ターゲット情報

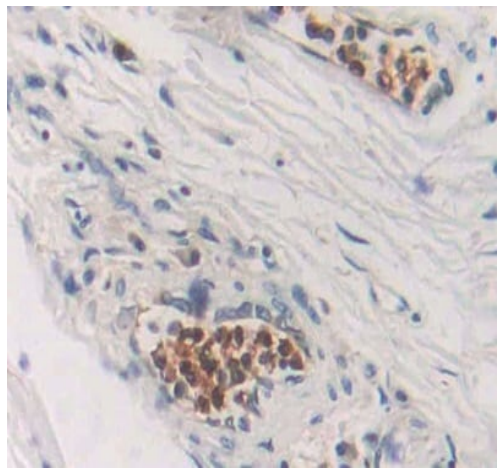
関連性 CDA (Cytidine deaminase) scavengers exogenous and endogenous cytidine and 2'-deoxycytidine for UMP synthesis. Growth inhibition of granulocyte-macrophage colony forming cells by human cytidine deaminase requires the catalytic function of the protein. It is highly expressed in granulocytes.

画像



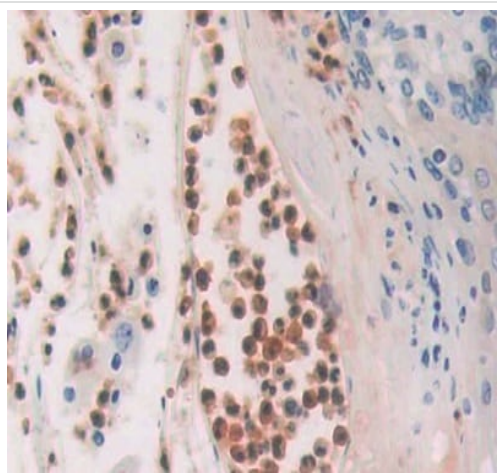
Formalin-fixed, paraffin-embedded human kidney tissue stained for CDA using ab231981 at 10 µg/ml in immunohistochemical analysis.

Immunohistochemistry (Formalin/PFA-fixed paraffin-embedded sections) - Anti-CDA antibody (ab231981)



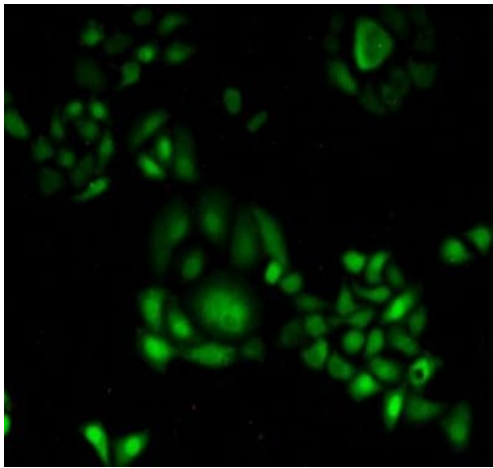
Immunohistochemistry (Formalin/PFA-fixed paraffin-embedded sections) - Anti-CDA antibody (ab231981)

Formalin-fixed, paraffin-embedded human lung cancer tissue stained for CDA using ab231981 at 20 µg/ml in immunohistochemical analysis.



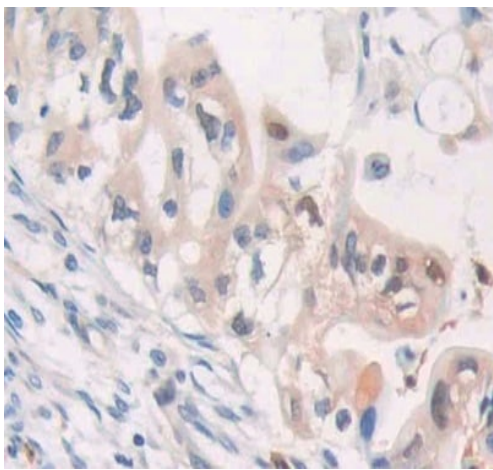
Immunohistochemistry (Formalin/PFA-fixed paraffin-embedded sections) - Anti-CDA antibody (ab231981)

Formalin-fixed, paraffin-embedded human skin cancer tissue stained for CDA using ab231981 at 20 µg/ml in immunohistochemical analysis.



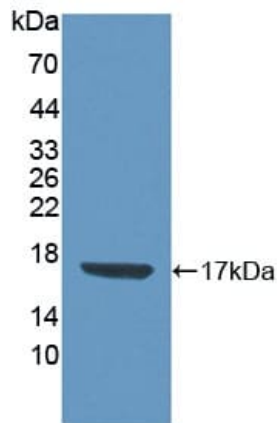
Immunocytochemistry/ Immunofluorescence - Anti-CDA antibody (ab231981)

HeLa (human epithelial cell line from cervix adenocarcinoma) cells stained for CDA using ab231981 at 20µg/ml in ICC/IF.



Immunohistochemistry (Formalin/PFA-fixed paraffin-embedded sections) - Anti-CDA antibody (ab231981)

Formalin-fixed, paraffin-embedded human bile duct cancer tissue stained for CDA using ab231981 at 20 µg/ml in immunohistochemical analysis.



Western blot - Anti-CDA antibody (ab231981)

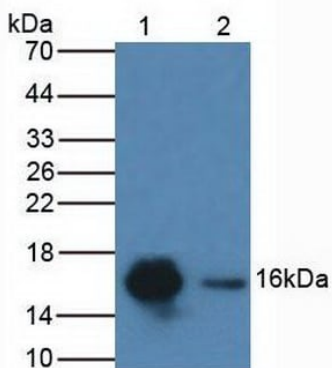
Anti-CDA antibody (ab231981) at 3 µg/ml + Recombinant human CDA

Secondary

HRP-Linked Guinea pig Anti-Rabbit at 1/2000 dilution

Developed using the ECL technique.

Predicted band size: 16 kDa



Western blot - Anti-CDA antibody (ab231981)

All lanes : Anti-CDA antibody (ab231981) at 3 µg/ml

Lane 1 : HeLa (human epithelial cell line from cervix adenocarcinoma) cell lysate

Lane 2 : Pig kidney lysate

Secondary

All lanes : HRP-Linked Guinea pig Anti-Rabbit at 1/2000 dilution

Developed using the ECL technique.

Predicted band size: 16 kDa

Please note: All products are "FOR RESEARCH USE ONLY. NOT FOR USE IN DIAGNOSTIC PROCEDURES"

Our Abpromise to you: Quality guaranteed and expert technical support

- Replacement or refund for products not performing as stated on the datasheet
- Valid for 12 months from date of delivery
- Response to your inquiry within 24 hours
- We provide support in Chinese, English, French, German, Japanese and Spanish
- Extensive multi-media technical resources to help you

- We investigate all quality concerns to ensure our products perform to the highest standards

If the product does not perform as described on this datasheet, we will offer a refund or replacement. For full details of the Abpromise, please visit <https://www.abcam.co.jp/abpromise> or contact our technical team.

Terms and conditions

- Guarantee only valid for products bought direct from Abcam or one of our authorized distributors