

Anti-CD80 antibody [EPR1157(2)] ab134120

KO 評価済 リコンビナント RabMAb

★★★★☆ 2 Abreviews 22 References 画像数 7

製品の概要

| | |
|--------------|--|
| 製品名 | Anti-CD80 antibody [EPR1157(2)] |
| 製品の詳細 | Rabbit monoclonal [EPR1157(2)] to CD80 |
| 由来種 | Rabbit |
| アプリケーション | 適用あり: Flow Cyt (Intra), WB, IHC-P 適用なし: ICC/IF |
| 種交差性 | 交差種: Human |
| 免疫原 | Synthetic peptide. This information is proprietary to Abcam and/or its suppliers. |
| ポジティブ・コントロール | WB: Raji and Ramos cell lysates. IHC-P: Human tonsil tissue. Flow Cyt (intra): Raji cells. |
| 特記事項 | <p>This product is a recombinant monoclonal antibody, which offers several advantages including:</p> <ul style="list-style-type: none"> - High batch-to-batch consistency and reproducibility - Improved sensitivity and specificity - Long-term security of supply - Animal-free production <p>For more information see here.</p> <p>Our RabMAb[®] technology is a patented hybridoma-based technology for making rabbit monoclonal antibodies. For details on our patents, please refer to RabMAb[®] patents.</p> <p>Mouse, Rat: We have preliminary internal testing data to indicate this antibody may not react with these species. Please contact us for more information.</p> |

製品の特性

| | |
|-------|---|
| 製品の状態 | Liquid |
| 保存方法 | Shipped at 4°C. Store at +4°C short term (1-2 weeks). Upon delivery aliquot. Store at -20°C. Stable for 12 months at -20°C. |
| バッファー | pH: 7.2 Preservative: 0.01% Sodium azide Constituents: 40% Glycerol (glycerin, glycerine), 0.05% BSA, 59% PBS |
| 精製度 | Protein A purified |
| ポリ/モノ | モノクローナル |

クローン名 EPR1157(2)
アイソタイプ IgG

アプリケーション

The Abpromise guarantee **Abpromise保証は、** 次のテスト済みアプリケーションにおけるab134120の使用に適用されます
アプリケーションノートには、推奨の開始希釈率がありますが、適切な希釈率につきましてはご検討ください。

| アプリケーション | Abreviews | 特記事項 |
|------------------|-----------|---|
| Flow Cyt (Intra) | | Use at an assay dependent concentration. |
| WB | | 1/1000 - 1/10000. Detects a band of approximately 60 kDa (predicted molecular weight: 33 kDa). For unpurified use at 1/500. |
| IHC-P | ★★★★★ (2) | 1/1000. Perform heat mediated antigen retrieval with Tris/EDTA buffer pH 9.0 before commencing with IHC staining protocol. |

追加情報 Is unsuitable for ICC/IF.

ターゲット情報

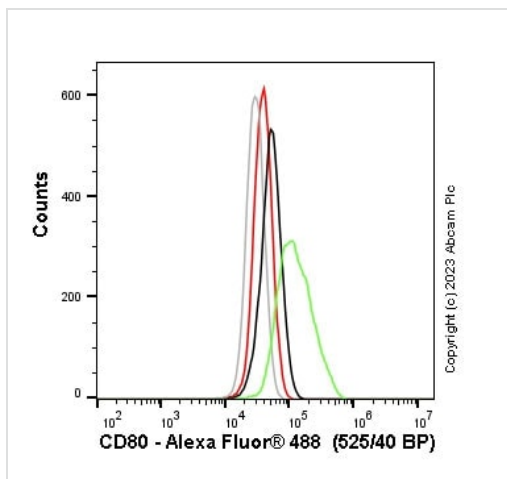
機能 Involved in the costimulatory signal essential for T-lymphocyte activation. T-cell proliferation and cytokine production is induced by the binding of CD28 or CTLA-4 to this receptor.

組織特異性 Expressed on activated B-cells, macrophages and dendritic cells.

配列類似性 Contains 1 Ig-like C2-type (immunoglobulin-like) domain.
Contains 1 Ig-like V-type (immunoglobulin-like) domain.

細胞内局在 Membrane.

画像



Flow Cytometry (Intracellular) - Anti-CD80 antibody
[EPR1157(2)] (ab134120)

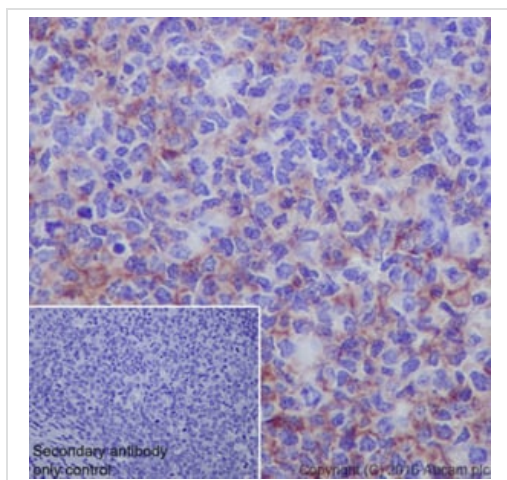
Flow cytometry overlay histogram showing wild-type Raji (green line) and CD80 knockout Raji stained with ab134120 (red line). The cells were fixed with 4% formaldehyde (10 min) and then permeabilised with 0.1% PBS-Triton X-100 for 15 min. The cells were then incubated in 1x PBS containing 10µg/ml human IgG and 10% normal goat serum to block FC receptors and non-specific protein-protein interaction followed by the antibody (ab134120) (1×10^6 in 100µl at 0.2 µg/ml (1/10150)) for 30min at 22°C.

The secondary antibody Goat Anti-Rabbit IgG H&L (Alexa Fluor® 488) preadsorbed was incubated at 1/4000 for 30min at 22°C

Isotype control antibody Recombinant Rabbit IgG, monoclonal [EPR25A] - Isotype Control was used at the same concentration and conditions as the primary antibody (wild-type Raji - black line, CD80 knockout Raji - grey line). Unlabelled sample was also used as a control (this line is not shown for the purpose of simplicity).

Acquisition of >5000 events were collected using a 50 mW Blue laser (488nm) and 525/40 bandpass filter.

This antibody gave a positive signal in Raji Fixed with 80% methanol (5 min) / permeabilised with 0.1% PBS-Triton X-100 for 15 min under the same conditions.

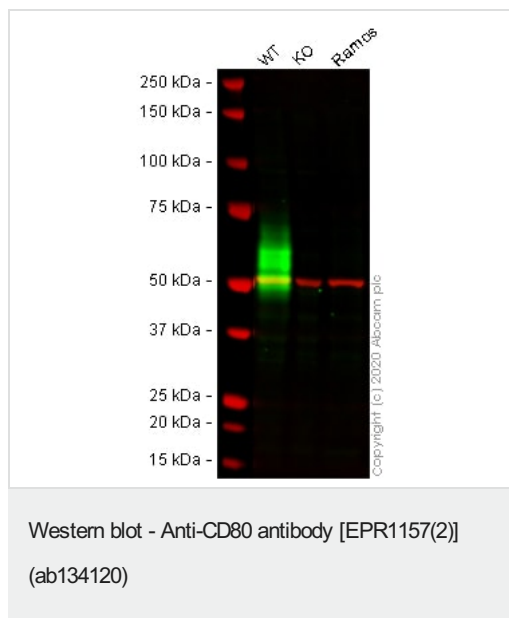


Immunohistochemistry (Formalin/PFA-fixed paraffin-embedded sections) - Anti-CD80 antibody
[EPR1157(2)] (ab134120)

Immunohistochemistry (Formalin/PFA-fixed paraffin-embedded sections) analysis of human tonsil tissue labelling CD80 with ab134120 at a dilution of 1/1000. Heat mediated antigen retrieval was performed using Tris/EDTA buffer, pH9 ([ab93684](#)).

ImmunoHistoProbe one step HRP Polymer was used. Counter stained with hematoxylin.

The image shows cytoplasmic and membrane staining.



All lanes : Anti-CD80 antibody [EPR1157(2)] (ab134120) at 1/1000 dilution

Lane 1 : Wild-type Raji (Human Burkitt's lymphoma cell line) whole cell lysate

Lane 2 : CD80 knockout Raji (Human Burkitt's lymphoma cell line) whole cell lysate

Lane 3 : Ramos (Human Burkitt's lymphoma cell line) whole cell lysate

Lysates/proteins at 20 µg per lane.

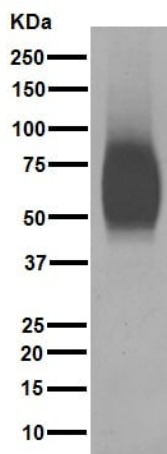
Performed under reducing conditions.

Predicted band size: 33 kDa

Observed band size: 55 kDa

Lanes 1 - 3: Merged signal (red and green). Green - ab134120 observed at 55 kDa. Red - loading control **ab7291** (Mouse anti-Alpha Tubulin [DM1A]) observed at 55kDa.

ab134120 was shown to react with CD80 in wild-type Raji cells in western blot with loss of signal observed in CD80 knockout sample. Wild-type and CD80 knockout Raji cell lysates were subjected to SDS-PAGE. Membranes were blocked in 3% milk in TBS-T (0.1% Tween®) before incubation with ab134120 and **ab7291** (Mouse anti-Alpha Tubulin [DM1A]) overnight at 4°C at a 1 in 1000 Dilution and a 1 in 20000 dilution respectively. Blots were incubated with Goat anti-Rabbit IgG H&L (IRDye® 800CW) preabsorbed (**ab216773**) and Goat anti-Mouse IgG H&L (IRDye® 680RD) preabsorbed (**ab216776**) secondary antibodies at 1 in 20000 dilution for 1 hour at room temperature before imaging.



Western blot - Anti-CD80 antibody [EPR1157(2)]
(ab134120)

Anti-CD80 antibody [EPR1157(2)] (ab134120) at 1/2500 dilution
(purified) + Raji cell lysate at 20 µg

Secondary

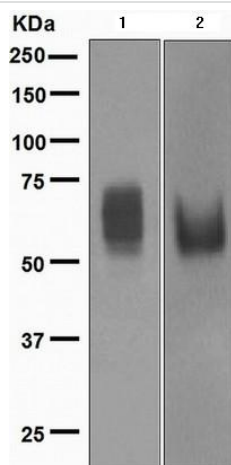
Peroxidase-conjugated goat anti-rabbit IgG (H+L) at 1/1000 dilution

Predicted band size: 33 kDa

Observed band size: 60 kDa

Blocking buffer and concentration: 5% NFDM/TBST.

Diluting buffer and concentration: 5% NFDM/TBST.



Western blot - Anti-CD80 antibody [EPR1157(2)]
(ab134120)

All lanes : Anti-CD80 antibody [EPR1157(2)] (ab134120) at
1/1000 dilution (unpurified)

Lane 1 : Raji cell lysate

Lane 2 : Ramos cell lysate

Lysates/proteins at 10 µg per lane.

Secondary

All lanes : Goat anti-rabbit HRP conjugated antibody at 1/2000
dilution

Predicted band size: 33 kDa

Observed band size: 60 kDa

| Tissue Microarray (TMA) data for ab134120 | | | | | |
|---|--------------------|-----------------------|--------------------------|--------------------------------------|---|
| Normal tissue samples | | | Malignant tissue samples | | |
| Human cardiac muscle | x | Human placenta | x | Clear cell carcinoma of human kidney | x |
| Human cerebrum | x | Human skeletal muscle | x | Human bladder cancer | x |
| Human colon | x (immune cells ✓) | Human skin | x (immune cells ✓) | Human breast carcinoma | x |
| Human endometrium | x | Human spleen | x | Human cervical carcinoma | x |
| Human kidney | x | Human stomach | x | Human colon carcinoma | x |
| Human liver | x | Human testis | x | Human endometrial carcinoma | x |
| Human lung | x | Human thyroid | x | Human gastric carcinoma | x |
| Human mammary gland | x | Human tonsil | ✓ | Human glioma | x |
| Human pancreas | x | | | Human hepatocellular carcinoma | x |
| | | | | Human lung carcinoma | x |
| | | | | Human non-Hodgkin's lymphoma | ✓ |
| | | | | Human ovarian carcinoma | x |
| | | | | Human pancreatic carcinoma | x |
| | | | | Human prostatic hyperplasia | x |
| | | | | Human thymoma | x |
| | | | | Human thymus hyperplasia | x |
| | | | | Human thyroid carcinoma | x |

Immunohistochemistry (Formalin/PFA-fixed paraffin-embedded sections) - Anti-CD80 antibody [EPR1157(2)] (ab134120)

Why choose a recombinant antibody?

Research with confidence

Consistent and reproducible results

Long-term and scalable supply

Recombinant technology

Success from the first experiment

Confirmed specificity

Ethical standards compliant

Animal-free production

Anti-CD80 antibody [EPR1157(2)] (ab134120)

Please note: All products are "FOR RESEARCH USE ONLY. NOT FOR USE IN DIAGNOSTIC PROCEDURES"

Our Abpromise to you: Quality guaranteed and expert technical support

6

- Replacement or refund for products not performing as stated on the datasheet
- Valid for 12 months from date of delivery
- Response to your inquiry within 24 hours
- We provide support in Chinese, English, French, German, Japanese and Spanish
- Extensive multi-media technical resources to help you
- We investigate all quality concerns to ensure our products perform to the highest standards

If the product does not perform as described on this datasheet, we will offer a refund or replacement. For full details of the Abpromise, please visit <https://www.abcam.co.jp/abpromise> or contact our technical team.

Terms and conditions

- Guarantee only valid for products bought direct from Abcam or one of our authorized distributors