

Anti-CD8 alpha antibody [BLR044F] ab243900

リコンビナント

画像数 5

製品の概要

製品名	Anti-CD8 alpha antibody [BLR044F]
製品の詳細	Rabbit monoclonal [BLR044F] to CD8 alpha
由来種	Rabbit
アプリケーション	適用あり: WB, IHC-P
種交差性	交差種: Human
免疫原	Synthetic peptide within Human CD8 alpha aa 185-235 (C terminal). The exact sequence is proprietary. NP_001759.3 and Gene ID 925. Database link: P01732
ポジティブ・コントロール	WB: CD8+ T cell whole cell lysate. IHC-P: Human tonsil and melanoma tissue.
特記事項	This product is sold under License from Bethyl Laboratories, Inc.

製品の特性

製品の状態	Liquid
保存方法	Shipped at 4°C. Store at +4°C short term (1-2 weeks). Upon delivery aliquot. Store at -20°C long term. Avoid freeze / thaw cycle.
バッファー	pH: 7.8 Preservative: 0.09% Sodium azide Constituents: 98% Borate buffered saline, 0.1% BSA
特記事項 (精製)	Recombinant antibody was purified from cell culture supernatant.
ポリ/モノ	モノクローナル
クローン名	BLR044F
アイソタイプ	IgG

アプリケーション

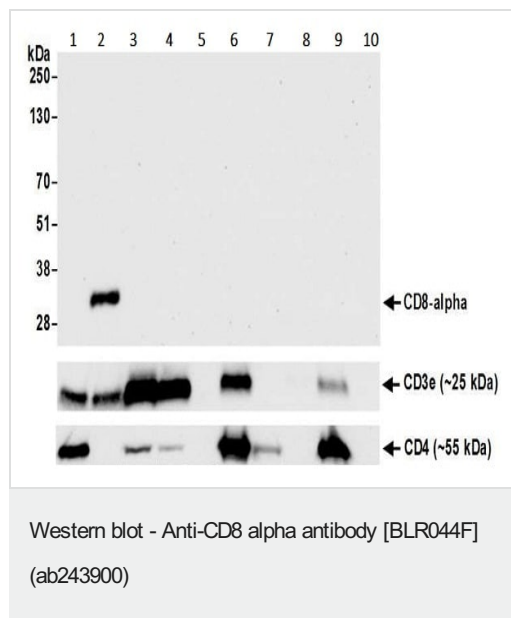
The Abpromise guarantee **Abpromise保証は、次のテスト済みアプリケーションにおけるab243900の使用に適用されます**
アプリケーションノートには、推奨の開始希釈率がありますが、適切な希釈率につきましてはご検討ください。

アプリケーション	Abreviews	特記事項
WB		1/1000.
IHC-P		1/100 - 1/500. Perform heat mediated antigen retrieval with citrate buffer pH 6 before commencing with IHC staining protocol.

ターゲット情報

機能	Identifies cytotoxic/suppressor T-cells that interact with MHC class I bearing targets. CD8 is thought to play a role in the process of T-cell mediated killing. CD8 alpha chains binds to class I MHC molecules alpha-3 domains.
関連疾患	Defects in CD8A are a cause of familial CD8 deficiency (CD8 deficiency) [MIM:608957]. Familial CD8 deficiency is a novel autosomal recessive immunologic defect characterized by absence of CD8+ cells, leading to recurrent bacterial infections.
配列類似性	Contains 1 Ig-like V-type (immunoglobulin-like) domain.
翻訳後修飾	All of the five most carboxyl-terminal cysteines form inter-chain disulfide bonds in dimers and higher multimers, while the four N-terminal cysteines do not.
細胞内局在	Secreted and Cell membrane.

画像



Western blot analysis using ab243900 at 1/1000 dilution.

Lane 1: CD4+ T cell whole cell lysate (50 µg).

Lane 2: CD8+ T cell whole cell lysate (50 µg).

Lane 3: Jurkat whole cell lysate (50 µg).

Lane 4: MOLT-4 whole cell lysate (50 µg).

Lane 5: RPMI 8226 whole cell lysate (50 µg).

Lane 6: MJ whole cell lysate (50 µg).

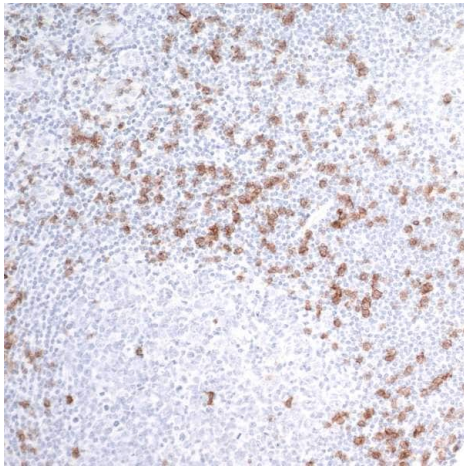
Lane 7: C5/MJ whole cell lysate (50 µg).

Lane 8: KG-1 whole cell lysate (50 µg).

Lane 9: SR whole cell lysate (50 µg).

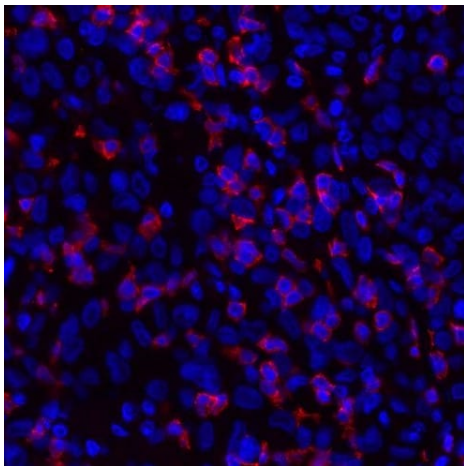
Lane 10: K562 whole cell lysate (50 µg).

A HRP-conjugated goat anti-rabbit IgG antibody was used as the secondary. Detection: chemiluminescence with an exposure time of 30 seconds.



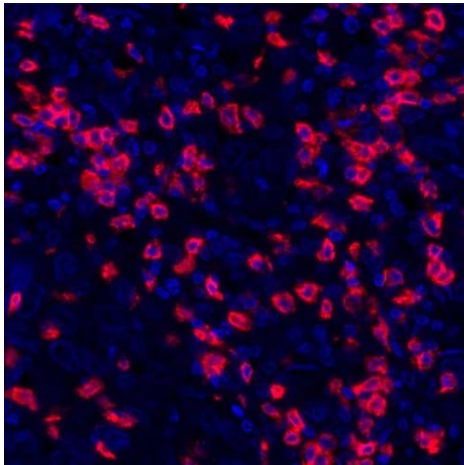
Immunohistochemistry (Formalin/PFA-fixed paraffin-embedded sections) - Anti-CD8 alpha antibody [BLR044F] (ab243900)

Formalin-fixed, paraffin-embedded human tonsil tissue stained for CD8 alpha using ab243900 at 1/250 dilution in immunohistochemical analysis. A HRP-conjugated goat anti-rabbit antibody was used as the secondary. DAB staining.



Immunohistochemistry (Formalin/PFA-fixed paraffin-embedded sections) - Anti-CD8 alpha antibody [BLR044F] (ab243900)

Formalin-fixed, paraffin-embedded human melanoma tissue stained for CD8 alpha (red) using ab243900 at 1/100 dilution in immunohistochemical analysis. A conjugated goat anti-rabbit antibody was used as the secondary. Counterstain: DAPI (blue).



Formalin-fixed, paraffin-embedded human breast carcinoma tissue stained for CD8 alpha (red) using ab243900 at 1/250 dilution in immunohistochemical analysis. A conjugated goat anti-rabbit antibody was used as the secondary. Counterstain: DAPI (blue).

Immunohistochemistry (Formalin/PFA-fixed paraffin-embedded sections) - Anti-CD8 alpha antibody [BLR044F] (ab243900)

Why choose a recombinant antibody?



Research with confidence
Consistent and reproducible results



Long-term and scalable supply
Recombinant technology



Success from the first experiment
Confirmed specificity



Ethical standards compliant
Animal-free production

Anti-CD8 alpha antibody [BLR044F] (ab243900)

Please note: All products are "FOR RESEARCH USE ONLY. NOT FOR USE IN DIAGNOSTIC PROCEDURES"

Our Abpromise to you: Quality guaranteed and expert technical support

- Replacement or refund for products not performing as stated on the datasheet
- Valid for 12 months from date of delivery
- Response to your inquiry within 24 hours
- We provide support in Chinese, English, French, German, Japanese and Spanish
- Extensive multi-media technical resources to help you
- We investigate all quality concerns to ensure our products perform to the highest standards

If the product does not perform as described on this datasheet, we will offer a refund or replacement. For full details of the Abpromise, please visit <https://www.abcam.co.jp/abpromise> or contact our technical team.

Terms and conditions

- Guarantee only valid for products bought direct from Abcam or one of our authorized distributors