


### Anti-CD68 antibody [C68/684] ab201340

★★★★★ **3 Abreviews** **81 References** 画像数 4

#### 製品の概要

製品名	Anti-CD68 antibody [C68/684]
製品の詳細	Mouse monoclonal [C68/684] to CD68
由来種	Mouse
特異性	ab201340 recognizes a glycoprotein of 110kDa, which is identified as CD68.
アプリケーション	<b>適用あり:</b> WB, Flow Cyt, IHC-P, ICC/IF
種交差性	<b>交差種:</b> Human <b>交差が予測される動物種:</b> Monkey 
免疫原	Recombinant full length protein corresponding to Human CD68. (Subcellular fraction of Human alveolar macrophages). Database link: <b>P34810</b>
ポジティブ・コントロール	IHC-P: Human tonsil and histiocytoma tissues; ICC/IF: U-87 MG cells; Flow Cyt: U-87 MG cells; WB: Human spleen tissue lysate.
特記事項	<p>ab201340 stains macrophages in a wide variety of Human tissues, including Kupffer cells and macrophages in the red pulp of the spleen, in lamina propria of the gut, in lung alveoli, and in bone marrow. It reacts with myeloid precursors and peripheral blood granulocytes. It also reacts with plasmacytoid T cells, which are supposed to be of monocyte/macrophage origin. It shows strong granular cytoplasmic staining of chronic and acute myeloid leukemia and also reacts with rare cases of true histiocytic neoplasia. Lymphomas are negative or show few granules.</p> <p>The Life Science industry has been in the grips of a reproducibility crisis for a number of years. Abcam is leading the way in addressing this with our range of recombinant monoclonal antibodies and knockout edited cell lines for gold-standard validation. Please check that this product meets your needs before purchasing.</p> <p>If you have any questions, special requirements or concerns, please send us an inquiry and/or contact our Support team ahead of purchase. Recommended alternatives for this product can be found below, along with publications, customer reviews and Q&amp;As</p>

#### 製品の特性

製品の状態	Liquid
保存方法	Shipped at 4°C. Store at +4°C short term (1-2 weeks). Upon delivery aliquot. Store at -20°C long term. Avoid freeze / thaw cycle.

バッファー	pH: 7.2 Preservative: 0.05% Sodium azide Constituents: 99% PBS, 0.05% BSA
精製度	Protein A/G purified
特記事項 (精製)	ab201340 is purified from Bioreactor Concentrate by Protein A/G column chromatography.
ポリ/モノ	モノクローナル
クローン名	C68/684
アイソタイプ	IgG1
軽鎖の種類	kappa

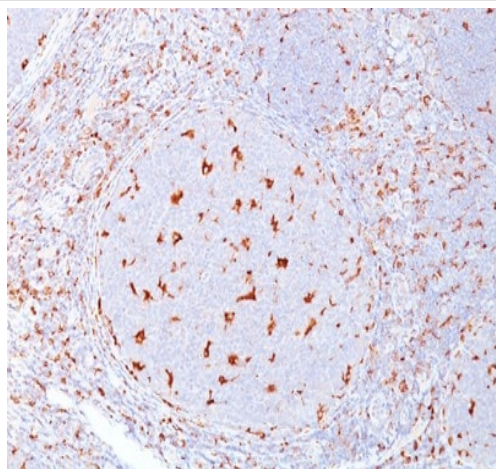
アプリケーション

The Abpromise guarantee      Abpromise保証は、次のテスト済みアプリケーションにおけるab201340の使用に適用されます  
アプリケーションノートには、推奨の開始希釈率がありますが、適切な希釈率につきましてはご確認ください。

アプリケーション	Abreviews	特記事項
WB		Use a concentration of 1 - 2 µg/ml. Detects a band of approximately 110 kDa (predicted molecular weight: 37 kDa).
Flow Cyt	★★★★★ (1)	Use 1-2µg for 10 <sup>6</sup> cells. <b>ab170190</b> - Mouse monoclonal IgG1, is suitable for use as an isotype control with this antibody.
IHC-P	★★★★★ (2)	Use a concentration of 1 - 2 µg/ml. Perform heat mediated antigen retrieval with 10 mM Tris with 1 mM EDTA buffer pH 9.0 for 45 minutes at 95°C followed by cooling at RT for 20 minutes. Incubate with primary for 30 minutes at RT.
ICC/IF		Use a concentration of 1 - 2 µg/ml.

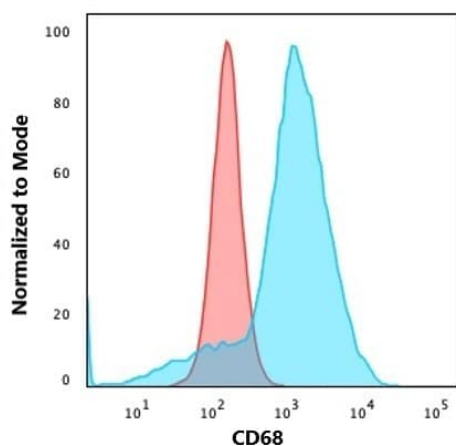
ターゲット情報

機能	Could play a role in phagocytic activities of tissue macrophages, both in intracellular lysosomal metabolism and extracellular cell-cell and cell-pathogen interactions. Binds to tissue- and organ-specific lectins or selectins, allowing homing of macrophage subsets to particular sites. Rapid recirculation of CD68 from endosomes and lysosomes to the plasma membrane may allow macrophages to crawl over selectin-bearing substrates or other cells.
組織特異性	Highly expressed by blood monocytes and tissue macrophages. Also expressed in lymphocytes, fibroblasts and endothelial cells. Expressed in many tumor cell lines which could allow them to attach to selectins on vascular endothelium, facilitating their dissemination to secondary sites.
配列類似性	Belongs to the LAMP family.
翻訳後修飾	N- and O-glycosylated.
細胞内局在	Cell membrane and Endosome membrane. Lysosome membrane.



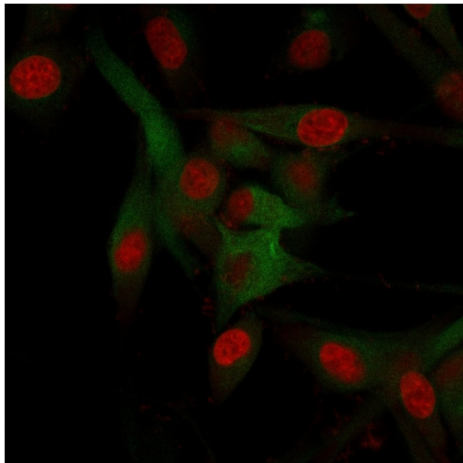
Immunohistochemical analysis of formalin-fixed, paraffin-embedded Human tonsil tissue labeling CD68 with ab201340 at 1 µg/ml.

Immunohistochemistry (Formalin/PFA-fixed paraffin-embedded sections) - Anti-CD68 antibody [C68/684] (ab201340)



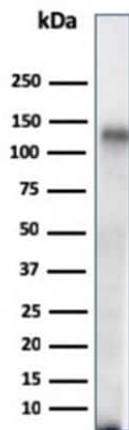
Flow Cytometry analysis of U-87 MG (human glioblastoma-astrocytoma epithelial cell line) cells labeling CD68 with ab201340. Goat Anti-Mouse IgG was used as the secondary antibody (blue); Isotype Control (red).

Flow Cytometry - Anti-CD68 antibody [C68/684] (ab201340)



Immunocytochemistry/immunofluorescence analysis of U-87 MG (human glioblastoma-astrocytoma epithelial cell line) cells labelling CD68 with ab201340. Goat Anti-Mouse IgG was used as the secondary antibody (green). Nuclear DNA stained red.

Immunocytochemistry/ Immunofluorescence - Anti-CD68 antibody [C68/684] (ab201340)



Anti-CD68 antibody [C68/684] (ab201340) + Human spleen tissue lysate

**Predicted band size:** 37 kDa

**Additional bands at:** 110 kDa (possible glycosylated form)

Western blot - Anti-CD68 antibody [C68/684] (ab201340)

**Please note:** All products are "FOR RESEARCH USE ONLY. NOT FOR USE IN DIAGNOSTIC PROCEDURES"

**Our Abpromise to you: Quality guaranteed and expert technical support**

- Replacement or refund for products not performing as stated on the datasheet
- Valid for 12 months from date of delivery
- Response to your inquiry within 24 hours
- We provide support in Chinese, English, French, German, Japanese and Spanish
- Extensive multi-media technical resources to help you
- We investigate all quality concerns to ensure our products perform to the highest standards

If the product does not perform as described on this datasheet, we will offer a refund or replacement. For full details of the Abpromise, please visit <https://www.abcam.co.jp/abpromise> or contact our technical team.

#### **Terms and conditions**

---

- Guarantee only valid for products bought direct from Abcam or one of our authorized distributors