

Anti-CD63 antibody [EPR22458-280] ab252919

リコンビナント RabMAb[®]

2 References [画像数 8](#)

製品の概要

製品名	Anti-CD63 antibody [EPR22458-280]
製品の詳細	Rabbit monoclonal [EPR22458-280] to CD63
由来種	Rabbit
アプリケーション	適用あり: IHC-P, ICC/IF, Flow Cyt (Intra) 適用なし: IP or WB
種交差性	交差種: Human
免疫原	Recombinant fragment. This information is proprietary to Abcam and/or its suppliers.
ポジティブ・コントロール	IHC-P: Human melanoma tissue and clear cell renal cell carcinoma. ICC/IF: SK-MEL-28 cells. Flow cyt: Human PBMCs and SK-MEL-28 cells.
特記事項	This product is a recombinant monoclonal antibody, which offers several advantages including: <ul style="list-style-type: none">- High batch-to-batch consistency and reproducibility- Improved sensitivity and specificity- Long-term security of supply- Animal-free production For more information see here . Our RabMAb [®] technology is a patented hybridoma-based technology for making rabbit monoclonal antibodies. For details on our patents, please refer to RabMAb[®] patents .

製品の特性

製品の状態	Liquid
保存方法	Shipped at 4°C. Store at +4°C short term (1-2 weeks). Upon delivery aliquot. Store at -20°C long term. Avoid freeze / thaw cycle.
バッファー	pH: 7.2 Preservative: 0.01% Sodium azide Constituents: PBS, 0.05% BSA, 40% Glycerol (glycerin, glycerine)
精製度	Protein A purified
ポリ/モノ	モノクローナル
クローン名	EPR22458-280

アプリケーション

The Abpromise guarantee **Abpromise保証は、次のテスト済みアプリケーションにおけるab252919の使用に適用されず**
 アプリケーションノートには、推奨の開始希釈率がありますが、適切な希釈率につきましてはご検討ください。

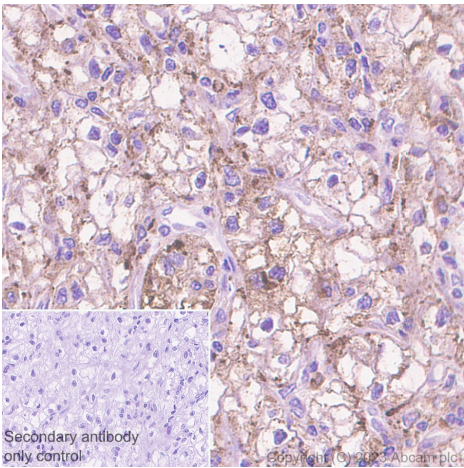
アプリケーション	Abreviews	特記事項
IHC-P		1/2000. Perform heat mediated antigen retrieval with Tris/EDTA buffer pH 9.0 before commencing with IHC staining protocol.
ICC/IF		1/1000.
Flow Cyt (Intra)		1/60.

追加情報 Is unsuitable for IP or WB.

ターゲット情報

機能	This antigen is associated with early stages of melanoma tumor progression. May play a role in growth regulation.
組織特異性	Dysplastic nevi, radial growth phase primary melanomas, hematopoietic cells, tissue macrophages.
配列類似性	Belongs to the tetraspanin (TM4SF) family.
細胞内局在	Cell membrane. Lysosome membrane. Late endosome membrane. Also found in Weibel-Palade bodies of endothelial cells. Located in platelet dense granules.

画像



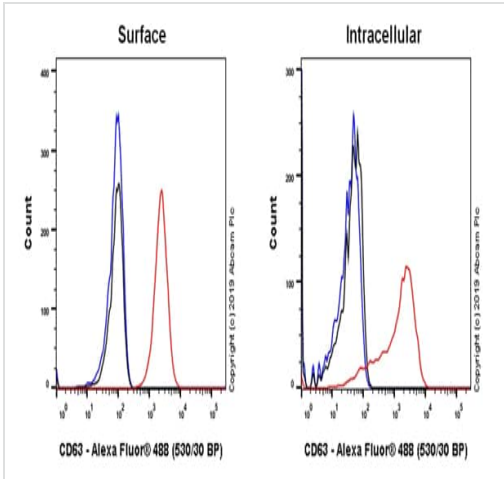
Immunohistochemistry (Formalin/PFA-fixed paraffin-embedded sections) - Anti-CD63 antibody [EPR22458-280] (ab252919)

Immunohistochemical analysis of paraffin-embedded human clear cell renal cell carcinoma tissue labeling CD63 with ab252919 at 1/4000 dilution, followed by Rabbit specific IHC polymer detection kit HRP/DAB ([ab209101](#)), Ready to use. Counter stained with hematoxylin.

Secondary antibody only control: Used PBS instead of primary antibody, secondary antibody is Rabbit specific IHC polymer detection kit HRP/DAB ([ab209101](#)).

Heat mediated antigen retrieval was performed with Tris-EDTA buffer (pH 9.0, Epitope Retrieval Solution2) for 20 mins.

Positive staining on human clear cell renal cell carcinoma. The section was incubated with ab252919 for 30 mins at room temperature. The immunostaining was performed on a Leica Biosystems BOND® RX instrument.

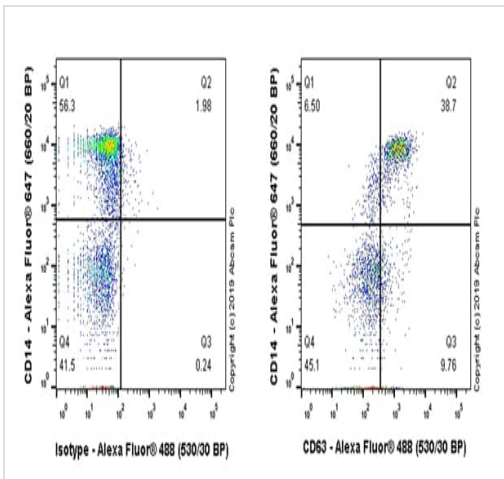


Flow Cytometry (Intracellular) - Anti-CD63 antibody [EPR22458-280] (ab252919)

Flow cytometric analysis of SK-MEL-28 (human malignant melanoma cell line) cells labeling CD63 with ab252919 at 1/60 (red) compared with a Rabbit monoclonal IgG Isotype control (**ab172730**) (black) and an unlabelled control (cells without incubation with primary antibody and secondary antibody) (blue). Goat Anti-Rabbit IgG H&L (Alexa Fluor® 488) (**ab150077**), at 1/2000 dilution was used as the secondary antibody.

Left panel: No fixation/permeabilization; Gated on viable cells for surface CD63 staining.

Right panel: 4% paraformaldehyde fixation / 90% methanol permeabilization.

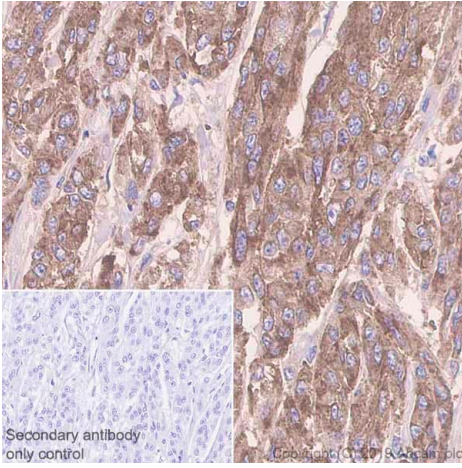


Flow Cytometry (Intracellular) - Anti-CD63 antibody [EPR22458-280] (ab252919)

Flow cytometric analysis of human peripheral blood mononuclear cells labeling CD63 with ab252919 at 1/60 (right) compared with a Rabbit IgG, monoclonal [EPR25A] - Isotype Control (**ab172730**) (left). Goat Anti-Rabbit IgG Fc (Alexa Fluor® 488) preadsorbed (**ab150097**), at 1/5000 dilution was used as the secondary antibody.

Cells were stained with rabbit IgG (Left) or ab252919 (Right). Then stained with anti-CD14 conjugated to Alexa Fluor® 647.

Gated on viable cells.



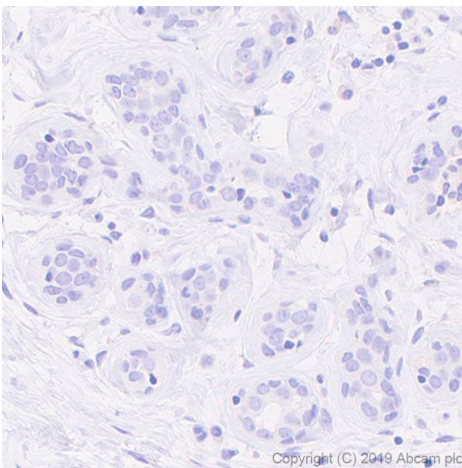
Immunohistochemistry (Formalin/PFA-fixed paraffin-embedded sections) - Anti-CD63 antibody [EPR22458-280] (ab252919)

Immunohistochemical analysis of paraffin-embedded human melanoma tissue labeling CD63 with ab252919 at 1/2000 dilution, followed by Rabbit specific IHC polymer detection kit HRP/DAB (**ab209101**). Cytoplasmic staining on human melanoma (PMID: 22425483) is observed. Counter stained with hematoxylin. Secondary antibody only control: Used PBS instead of primary antibody, secondary antibody is Rabbit specific IHC polymer detection kit HRP/DAB (**ab209101**).

Heat mediated antigen retrieval with Tris-EDTA buffer (pH 9.0, epitope retrieval solution 2) for 20 minutes.

The section was incubated with ab252919 for 30 minutes at RT.

The immunostaining was performed on a Leica Biosystems BOND[®] RX instrument.



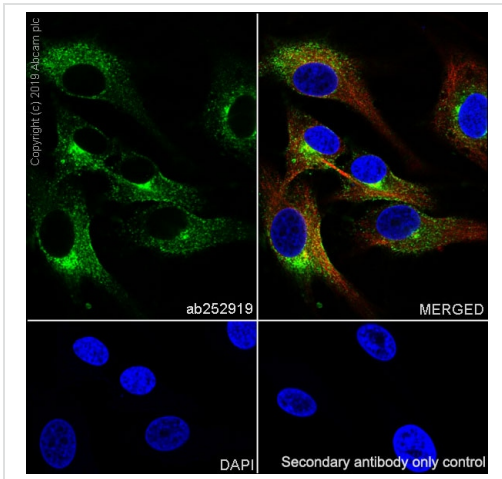
Immunohistochemistry (Formalin/PFA-fixed paraffin-embedded sections) - Anti-CD63 antibody [EPR22458-280] (ab252919)

Immunohistochemical analysis of paraffin-embedded human breast tissue labeling CD63 with ab252919 at 1/500 dilution, followed by Goat Anti-Rabbit IgG H&L (HRP) ready to use. Counter stained with hematoxylin.

Secondary antibody only control: Used PBS instead of primary antibody, secondary antibody is Goat Anti-Rabbit IgG H&L (HRP) ready to use.

Negative control: No staining on normal epithelial cells and stromal cells in human breast (PMID: 22957045).

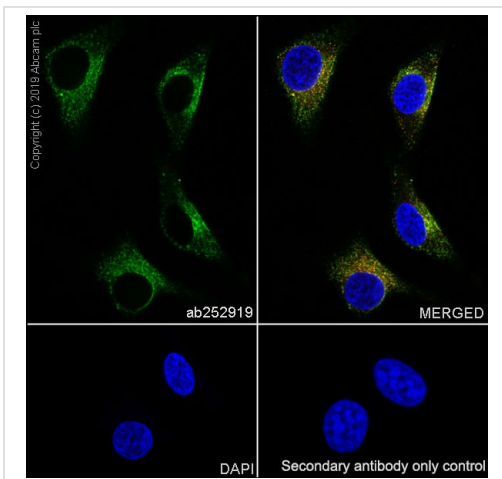
Heat mediated antigen retrieval using **ab93684** (Tris/EDTA buffer, pH 9.0).



Immunocytochemistry/ Immunofluorescence - Anti-CD63 antibody [EPR22458-280] (ab252919)

Immunofluorescent analysis of 4% paraformaldehyde-fixed, 0.1% Triton X-100 permeabilized SK-MEL-28 (human malignant melanoma cell line) cells labeling CD63 with ab252919 at 1/1000 dilution, followed by Goat Anti-Rabbit IgG H&L (Alexa Fluor® 488) (**ab150077**) secondary antibody at 1/1000 dilution (green). Confocal image showing cytoplasmic and membranous staining in SK-MEL-28 cell line. The nuclear counterstain is DAPI (blue). Tubulin is detected with Anti-alpha Tubulin antibody [DM1A] - Microtubule Marker (Alexa Fluor® 594) (**ab195889**) at 1/200 dilution (red).

Secondary antibody only control: Used PBS instead of primary antibody, followed by Goat Anti-Rabbit IgG H&L (Alexa Fluor® 488) (**ab150077**) secondary antibody at 1/1000 dilution.



Immunocytochemistry/ Immunofluorescence - Anti-CD63 antibody [EPR22458-280] (ab252919)

Immunofluorescent analysis of 4% paraformaldehyde-fixed, 0.1% Triton X-100 permeabilized SK-MEL-28 (human malignant melanoma cell line) cells labeling CD63 with ab252919 at 1/1000 dilution, followed by Goat Anti-Rabbit IgG H&L (Alexa Fluor® 488) (**ab150077**) secondary antibody at 1/1000 dilution (green). Confocal image showing lysosome/endosomes co-staining in SK-MEL-28 cell line. The nuclear counterstain is DAPI (blue). Lysosomes/endosomes are detected with Anti-LAMP1 antibody [H4A3] (**ab25630**) at 1/200 dilution, followed by Goat Anti-Mouse IgG H&L (Alexa Fluor® 594) preadsorbed (**ab150120**) (red).

Secondary antibody only control: Used PBS instead of primary antibody, followed by Goat Anti-Rabbit IgG H&L (Alexa Fluor® 488) (**ab150077**) secondary antibody at 1/1000 dilution.

Why choose a recombinant antibody?

 <p>Research with confidence Consistent and reproducible results</p>	 <p>Long-term and scalable supply Recombinant technology</p>
 <p>Success from the first experiment Confirmed specificity</p>	 <p>Ethical standards compliant Animal-free production</p>

Anti-CD63 antibody [EPR22458-280] (ab252919)

Please note: All products are "FOR RESEARCH USE ONLY. NOT FOR USE IN DIAGNOSTIC PROCEDURES"

Our Abpromise to you: Quality guaranteed and expert technical support

- Replacement or refund for products not performing as stated on the datasheet
- Valid for 12 months from date of delivery
- Response to your inquiry within 24 hours

- We provide support in Chinese, English, French, German, Japanese and Spanish
- Extensive multi-media technical resources to help you
- We investigate all quality concerns to ensure our products perform to the highest standards

If the product does not perform as described on this datasheet, we will offer a refund or replacement. For full details of the Abpromise, please visit <https://www.abcam.co.jp/abpromise> or contact our technical team.

Terms and conditions

- Guarantee only valid for products bought direct from Abcam or one of our authorized distributors