

Anti-CD62E antibody [1.2B6] ab6630

★★★★☆ [3 Abreviews](#) [11 References](#) [画像数 1](#)

製品の概要

製品名	Anti-CD62E antibody [1.2B6]
製品の詳細	Mouse monoclonal [1.2B6] to CD62E
由来種	Mouse
特異性	This antibody recognises the human CD62E and CD62P cell surface antigens binding to a common epitope on these members of the selectin family.
アプリケーション	適用あり: Flow Cyt 適用なし: IHC-P
種交差性	交差種: Human
免疫原	Full length protein corresponding to Human CD62E. Database link: P16581
特記事項	<p>This antibody inhibits neutrophil adhesion to E-selectin and to P-selectin. E-selectin (ELAM-1) is expressed on the surface of activated endothelial cells.</p> <p>The Life Science industry has been in the grips of a reproducibility crisis for a number of years. Abcam is leading the way in addressing this with our range of recombinant monoclonal antibodies and knockout edited cell lines for gold-standard validation. Please check that this product meets your needs before purchasing.</p> <p>If you have any questions, special requirements or concerns, please send us an inquiry and/or contact our Support team ahead of purchase. Recommended alternatives for this product can be found below, along with publications, customer reviews and Q&As</p>

製品の特性

製品の状態	Liquid
保存方法	Shipped at 4°C. Store at +4°C short term (1-2 weeks). Upon delivery aliquot. Store at -20°C or -80°C. Avoid freeze / thaw cycle.
バッファー	Preservative: 0.09% Sodium azide Constituent: PBS
精製度	Protein A purified
特記事項(精製)	Purified IgG prepared by affinity chromatography on Protein A from tissue culture supernatant.

一次抗体 備考	This antibody inhibits neutrophil adhesion to E-selectin and to P-selectin. E-selectin (ELAM-1) is expressed on the surface of activated endothelial cells.
ポリ/モノ	モノクローナル
クローン名	1.2B6
ミエローマ	NS1
アイソタイプ	IgG1

アプリケーション

The Abpromise guarantee **Abpromise保証は、** 次のテスト済みアプリケーションにおけるab6630の使用に適用されず
 アプリケーションノートには、推奨の開始希釈率がありますが、適切な希釈率につきましてはご検討ください。

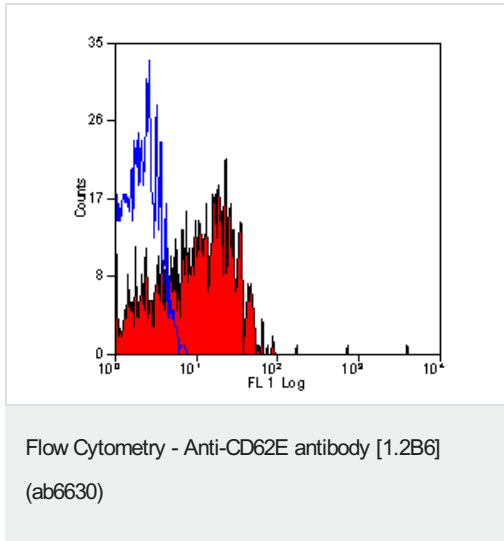
アプリケーション	Abreviews	特記事項
Flow Cyt		Use a concentration of 10 µg/ml. ab170190 - Mouse monoclonal IgG1, is suitable for use as an isotype control with this antibody.

追加情報 Is unsuitable for IHC-P.

ターゲット情報

機能	Cell-surface glycoprotein having a role in immunoadhesion. Mediates in the adhesion of blood neutrophils in cytokine-activated endothelium through interaction with PSGL1/SELPLG. May have a role in capillary morphogenesis.
配列類似性	Belongs to the selectin/LECAM family. Contains 1 C-type lectin domain. Contains 1 EGF-like domain. Contains 6 Sushi (CCP/SCR) domains.
細胞内局在	Membrane.

画像



ab6630 staining CD62E in thrombin activated human peripheral blood platelets by Flow Cytometry analysis.

Please note: All products are "FOR RESEARCH USE ONLY. NOT FOR USE IN DIAGNOSTIC PROCEDURES"

Our Abpromise to you: Quality guaranteed and expert technical support

- Replacement or refund for products not performing as stated on the datasheet
- Valid for 12 months from date of delivery
- Response to your inquiry within 24 hours
- We provide support in Chinese, English, French, German, Japanese and Spanish
- Extensive multi-media technical resources to help you
- We investigate all quality concerns to ensure our products perform to the highest standards

If the product does not perform as described on this datasheet, we will offer a refund or replacement. For full details of the Abpromise, please visit <https://www.abcam.co.jp/abpromise> or contact our technical team.

Terms and conditions

- Guarantee only valid for products bought direct from Abcam or one of our authorized distributors