

### Anti-CD5L/CT-2 antibody ab45408

[11 References](#) [画像数 3](#)

#### 製品の概要

---

製品名	Anti-CD5L/CT-2 antibody
製品の詳細	Rabbit polyclonal to CD5L/CT-2
由来種	Rabbit
アプリケーション	<b>適用あり:</b> IHC-P, ICC/IF, WB
種交差性	<b>交差種:</b> Mouse, Human
免疫原	Synthetic peptide. This information is proprietary to Abcam and/or its suppliers.
ポジティブ・コントロール	Human Lymph Node Tissue Lysate
特記事項	<p>The Life Science industry has been in the grips of a reproducibility crisis for a number of years. Abcam is leading the way in addressing this with our range of recombinant monoclonal antibodies and knockout edited cell lines for gold-standard validation. Please check that this product meets your needs before purchasing.</p> <p>If you have any questions, special requirements or concerns, please send us an inquiry and/or contact our Support team ahead of purchase. Recommended alternatives for this product can be found below, along with publications, customer reviews and Q&amp;As</p>

#### 製品の特性

---

製品の状態	Liquid
保存方法	Shipped at 4°C. Store at +4°C.
バッファー	pH: 7.2 Preservative: 0.02% Sodium azide Constituent: PBS
精製度	Immunogen affinity purified
ポリ/モノ	ポリクローナル
アイソタイプ	IgG

#### アプリケーション

---

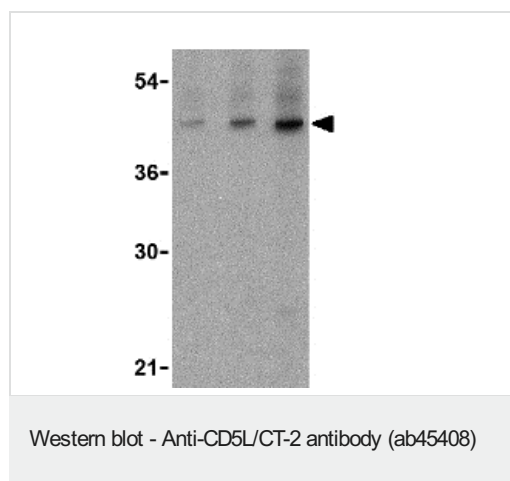
**The Abpromise guarantee**      **Abpromise保証は、次のテスト済みアプリケーションにおけるab45408の使用に適用されます**  
アプリケーションノートには、推奨の開始希釈率がありますが、適切な希釈率につきましてはご検討ください。

アプリケーション	Abreviews	特記事項
IHC-P		Use a concentration of 2 µg/ml.
ICC/IF		Use a concentration of 20 µg/ml.
WB		Use a concentration of 1 - 2 µg/ml. Detects a band of approximately 46 kDa (predicted molecular weight: 38 kDa).

## ターゲット情報

機能	May play a role in the regulation of the immune system. Seems to play a role as an inhibitor of apoptosis.
組織特異性	Expressed in spleen, lymph node, thymus, bone marrow, and fetal liver, but not in non-lymphoid tissues.
配列類似性	Contains 3 SRCR domains.
細胞内局在	Secreted.

## 画像



**Lane 1** : Anti-CD5L/CT-2 antibody (ab45408) at 1 µg/ml

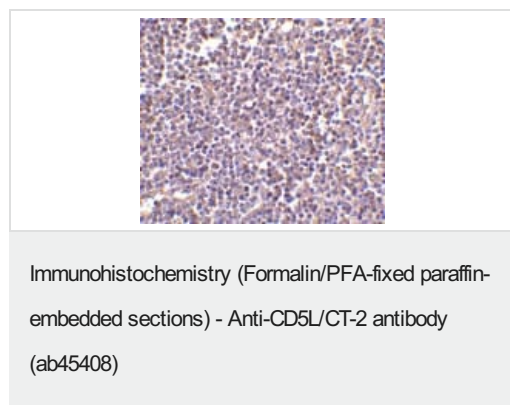
**Lane 2** : Anti-CD5L/CT-2 antibody (ab45408) at 2 µg/ml

**Lane 3** : Anti-CD5L/CT-2 antibody (ab45408) at 4 µg/ml

**All lanes** : human lymph node tissue lysate

**Predicted band size:** 38 kDa

**Observed band size:** 46 kDa



ab45408 at 2µg/ml staining CD5L/CT-2 in human lymph node tissue by IHC

Immunocytochemistry/ Immunofluorescence - Anti-  
CD5L/CT-2 antibody (ab45408)

Immunofluorescence of AIM in Human Lymph Node cells using  
ab45408 at 20 ug/ml.

**Please note:** All products are "FOR RESEARCH USE ONLY. NOT FOR USE IN DIAGNOSTIC PROCEDURES"

### **Our Abpromise to you: Quality guaranteed and expert technical support**

---

- Replacement or refund for products not performing as stated on the datasheet
- Valid for 12 months from date of delivery
- Response to your inquiry within 24 hours
- We provide support in Chinese, English, French, German, Japanese and Spanish
- Extensive multi-media technical resources to help you
- We investigate all quality concerns to ensure our products perform to the highest standards

If the product does not perform as described on this datasheet, we will offer a refund or replacement. For full details of the Abpromise, please visit <https://www.abcam.co.jp/abpromise> or contact our technical team.

### **Terms and conditions**

---

- Guarantee only valid for products bought direct from Abcam or one of our authorized distributors