


# Anti-CD45 antibody - Hematopoietic Stem Cell Marker ab10559

★★★★★ [7 Abreviews](#) [35 References](#) [画像数 2](#)

### 製品の概要

製品名	Anti-CD45 antibody - Hematopoietic Stem Cell Marker
製品の詳細	Rabbit polyclonal to CD45 - Hematopoietic Stem Cell Marker
由来種	Rabbit
アプリケーション	<b>適用あり:</b> WB, IHC-P
種交差性	<b>交差種:</b> Human <b>交差が予測される動物種:</b> Pig, Monkey 
免疫原	Synthetic peptide. This information is proprietary to Abcam and/or its suppliers.
特記事項	<p>The Life Science industry has been in the grips of a reproducibility crisis for a number of years. Abcam is leading the way in addressing this with our range of recombinant monoclonal antibodies and knockout edited cell lines for gold-standard validation. Please check that this product meets your needs before purchasing.</p> <p>If you have any questions, special requirements or concerns, please send us an inquiry and/or contact our Support team ahead of purchase. Recommended alternatives for this product can be found below, along with publications, customer reviews and Q&amp;As</p>

### 製品の特性

製品の状態	Liquid
保存方法	Shipped at 4°C. Upon delivery aliquot and store at -20°C or -80°C. Avoid repeated freeze / thaw cycles.
バッファー	<p>pH: 7.40</p> <p>Preservative: 0.02% Sodium azide</p> <p>Constituent: PBS</p> <p>Batches of this product that have a concentration &lt; 1mg/ml may have BSA added as a stabilising agent. If you would like information about the formulation of a specific lot, please contact our scientific support team who will be happy to help.</p>
精製度	Immunogen affinity purified
ポリ/モノ	ポリクローナル
アイソタイプ	IgG

## アプリケーション

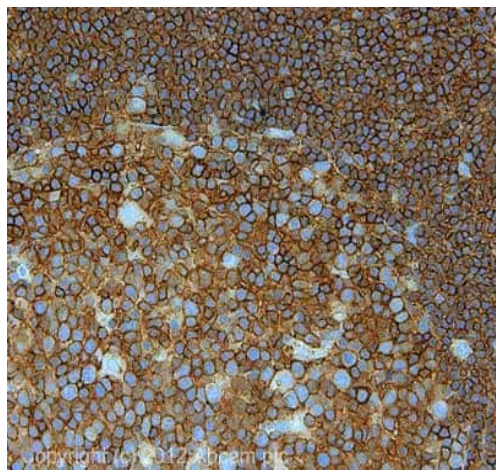
**The Abpromise guarantee**      **Abpromise保証は、次のテスト済みアプリケーションにおけるab10559の使用に適用されます**  
アプリケーションノートには、推奨の開始希釈率がありますが、適切な希釈率につきましてはご確認ください。

アプリケーション	Abreviews	特記事項
WB		1/500. Detects a band of approximately 155 kDa (predicted molecular weight: 147 kDa).
IHC-P	★★★★★ (4)	Use a concentration of 1 µg/ml. Perform heat mediated antigen retrieval before commencing with IHC staining protocol.

## ターゲット情報

機能	Protein tyrosine-protein phosphatase required for T-cell activation through the antigen receptor. Acts as a positive regulator of T-cell coactivation upon binding to DPP4. The first PTPase domain has enzymatic activity, while the second one seems to affect the substrate specificity of the first one. Upon T-cell activation, recruits and dephosphorylates SKAP1 and FYN.
関連疾患	Defects in PTPRC are a cause of severe combined immunodeficiency autosomal recessive T-cell-negative/B-cell-positive/NK-cell-positive (T(-)B(+)NK(+)) SCID [MIM:608971]. A form of severe combined immunodeficiency (SCID), a genetically and clinically heterogeneous group of rare congenital disorders characterized by impairment of both humoral and cell-mediated immunity, leukopenia, and low or absent antibody levels. Patients present in infancy recurrent, persistent infections by opportunistic organisms. The common characteristic of all types of SCID is absence of T-cell-mediated cellular immunity due to a defect in T-cell development. Genetic variations in PTPRC are involved in multiple sclerosis susceptibility (MS) [MIM:126200]. MS is a neurodegenerative disorder characterized by the gradual accumulation of focal plaques of demyelination particularly in the periventricular areas of the brain. Peripheral nerves are not affected. Onset usually in third or fourth decade with intermittent progression over an extended period. The cause is still uncertain.
配列類似性	Belongs to the protein-tyrosine phosphatase family. Receptor class 1/6 subfamily. Contains 2 fibronectin type-III domains. Contains 2 tyrosine-protein phosphatase domains.
ドメイン	The first PTPase domain interacts with SKAP1.
翻訳後修飾	Heavily N- and O-glycosylated.
細胞内局在	Membrane. Membrane raft. Colocalized with DPP4 in membrane rafts.

## 画像



Immunohistochemistry (Formalin/PFA-fixed paraffin-embedded sections) - Anti-CD45 antibody - Hematopoietic Stem Cell Marker (ab10559)

IHC image of ab10559 staining in human Hodgkins lymphoma formalin fixed paraffin embedded tissue section, performed on a Leica Bond™ system using the standard protocol F. The section was pre-treated using heat mediated antigen retrieval with sodium citrate buffer (pH6, epitope retrieval solution 1) for 20 mins. The section was then incubated with ab10559, 5µg/ml, for 15 mins at room temperature and detected using an HRP conjugated compact polymer system. DAB was used as the chromogen. The section was then counterstained with haematoxylin and mounted with DPX. For other IHC staining systems (automated and non-automated) customers should optimize variable parameters such as antigen retrieval conditions, primary antibody concentration and antibody incubation times.



Western blot - Anti-CD45 antibody - Hematopoietic Stem Cell Marker (ab10559)

ab10559 rabbit polyclonal to CD45 (1/500) with secondary goat anti-rabbit IgG **ab6721** (1/5000).

Expected molecular weight: 147 kDa. WB exposure time: 1min 30sec

Lanes 1 to 10: 20µg of cell lysate per lane

Lanes 6 to 10: **ab17550** CD45 blocking peptide used at 1µg/ml

Lane 1: HeLa Nuclear Extract (ab10559)

Lane 2: HeLa Whole Cell Lysate (ab10559)

Lane 3: A431 Whole Cell Lysate (ab10559)

Lane 4: Jurkat Whole Cell Lysate (ab10559)

Lane 5: HEK293 Whole Cell Lysate (ab10559)

Lane 6: HeLa Nuclear Extract (ab10559+ **ab17550**)

Lane 7: HeLa Whole Cell Lysate (ab10559+ **ab17550**)

Lane 8: A431 Whole Cell Lysate (ab10559+ **ab17550**)

Lane 9: Jurkat Whole Cell Lysate (ab10559+ **ab17550**)

Lane 10: HEK293 Whole Cell Lysate (ab10559+ **ab17550**)

A strong band, slightly higher was seen in Jurkat cell lysate. The band was blocked using the immunising peptide (**ab17550**). It is likely that the band is CD45.

### **Our Abpromise to you: Quality guaranteed and expert technical support**

---

- Replacement or refund for products not performing as stated on the datasheet
- Valid for 12 months from date of delivery
- Response to your inquiry within 24 hours
  
- We provide support in Chinese, English, French, German, Japanese and Spanish
- Extensive multi-media technical resources to help you
- We investigate all quality concerns to ensure our products perform to the highest standards

If the product does not perform as described on this datasheet, we will offer a refund or replacement. For full details of the Abpromise, please visit <https://www.abcam.co.jp/abpromise> or contact our technical team.

### **Terms and conditions**

---

- Guarantee only valid for products bought direct from Abcam or one of our authorized distributors